

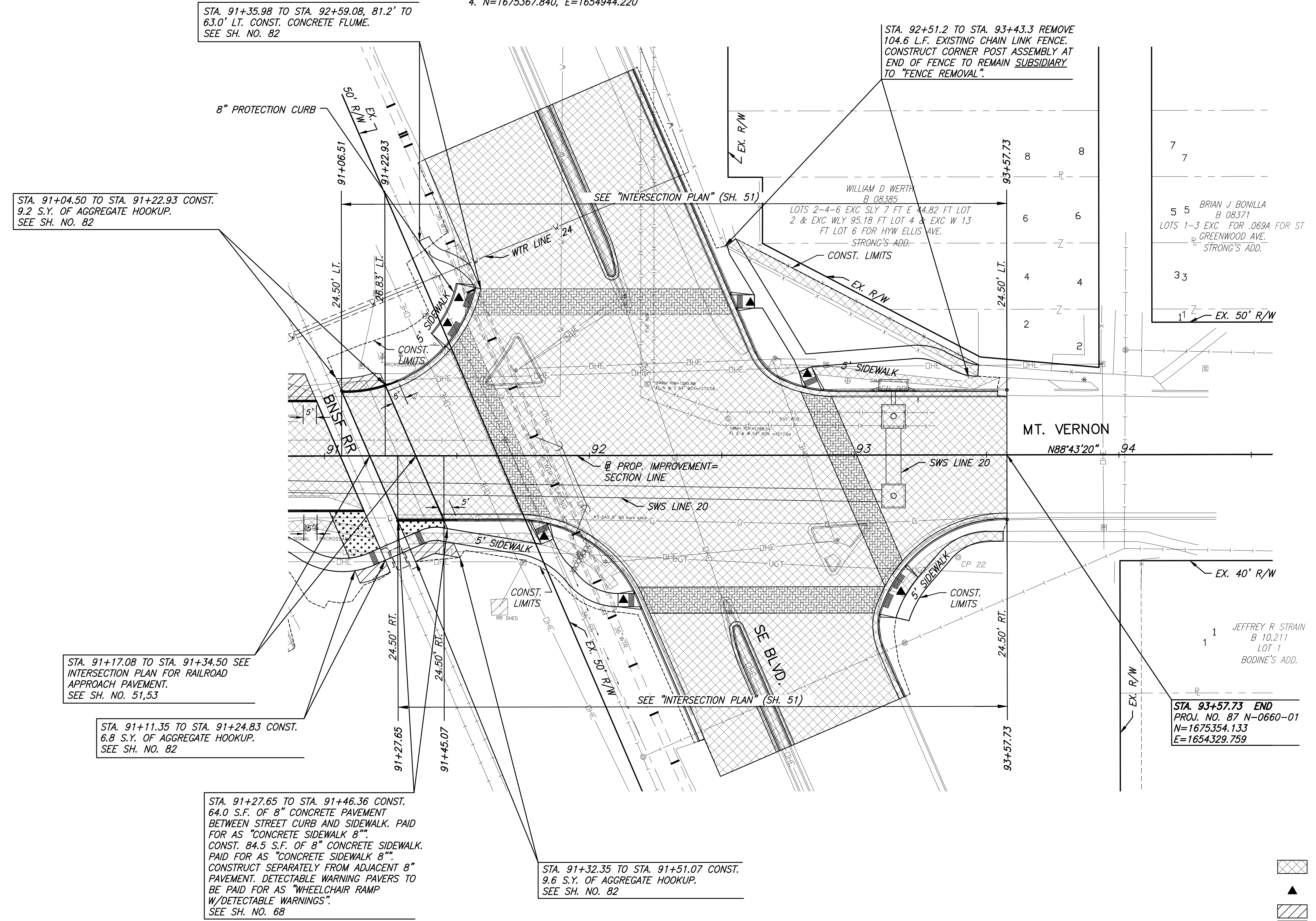
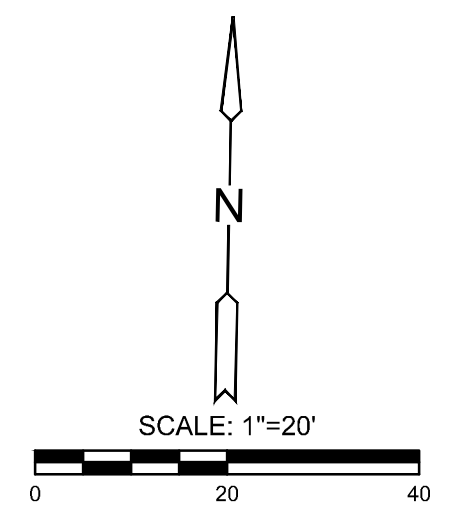
PLOT/TEC: Friday, August 23, 2019 @ 03:17PM

J:\CIVIL\081390\DWG\PAV\081390-01.DWG

E 1/4 COR., SEC. 33, T27S, R1E  
 STA. 99+72.34, 0.00' RT.  
 1.  
 2.  
 3.  
 4. N=1675367.840, E=1654944.220

PI STA. 99+72.34, MT VERNON  
 1. N=1675367.840, E=1654944.220

STATE	PROJECT NO.	YEAR	SHEET NO.	TOTAL SHEETS
KANSAS	87 N-0660-01	2019	14	198



STA. 91+04.50 TO STA. 91+22.93 CONST.  
 9.2 S.Y. OF AGGREGATE HOOKUP.  
 SEE SH. NO. 82

STA. 91+35.98 TO STA. 92+59.08, 81.2' TO  
 63.0' LT. CONST. CONCRETE FLUME.  
 SEE SH. NO. 82

STA. 92+51.2 TO STA. 93+43.3 REMOVE  
 104.6 L.F. EXISTING CHAIN LINK FENCE.  
 CONSTRUCT CORNER POST ASSEMBLY AT  
 END OF FENCE TO REMAIN SUBSIDIARY  
 TO "FENCE REMOVAL".

STA. 91+17.08 TO STA. 91+34.50 SEE  
 INTERSECTION PLAN FOR RAILROAD  
 APPROACH PAVEMENT.  
 SEE SH. NO. 51,53

STA. 91+11.35 TO STA. 91+24.83 CONST.  
 6.8 S.Y. OF AGGREGATE HOOKUP.  
 SEE SH. NO. 82

STA. 91+27.65 TO STA. 91+46.36 CONST.  
 64.0 S.F. OF 8" CONCRETE PAVEMENT  
 BETWEEN STREET CURB AND SIDEWALK. PAID  
 FOR AS "CONCRETE SIDEWALK 8"  
 CONST. 84.5 S.F. OF 8" CONCRETE SIDEWALK.  
 PAID FOR AS "CONCRETE SIDEWALK 8"  
 CONSTRUCT SEPARATELY FROM ADJACENT 8"  
 PAVEMENT. DETECTABLE WARNING PAVERS TO  
 BE PAID FOR AS "WHEELCHAIR RAMP  
 W/DETECTABLE WARNINGS".  
 SEE SH. NO. 68

STA. 91+32.35 TO STA. 91+51.07 CONST.  
 9.6 S.Y. OF AGGREGATE HOOKUP.  
 SEE SH. NO. 82

UTILITY ADJUSTMENTS				
STATION	OFFSET	EXIST. ELEV.	PROP. ELEV.	REMARKS
91+68.39	5.82' LT.	1290.02	1289.89	SS MH ADJUSTMENT
92+21.93	26.91' LT.	1289.85	1289.71	SWS MH ADJUSTMENT
92+52.51	13.86' LT.	1289.54	1289.16	SWS MH ADJUSTMENT

PROTECTION CURB				
STATION TO STATION	SIDE	QUANTITY	REMARKS	
STA. 91+40.30 TO STA. 91+50.29	LT.	21.5'	AT NW CORNER INTERSECTION SE BLVD.	

STA. 93+57.73 END  
 PROJ. NO. 87 N-0660-01  
 N=1675354.133  
 E=1654329.759

- LEGEND**
- PAVEMENT REMOVAL
  - CONSTRUCT WHEELCHAIR RAMP SEE SH. NO. 68
  - AGGREGATE HOOKUP
  - BRICK PAVERS
  - PAVEMENT REMOVED AND REPLACED
  - 8" SIDEWALK
  - STORM SEWER REMOVAL
  - TREE REMOVAL
  - CURB HEIGHT TRANSITION

STREET IMPROVEMENTS FOR  
**MT. VERNON IMPROVEMENTS**  
 BROADWAY TO SOUTHEAST BLVD.

©2019 MKEC Engineering All Rights Reserved  
 www.mkec.com  
 These drawings and their contents, including, but not limited to, all concepts, designs, & lists are the exclusive property of MKEC Engineering (MKEC), and may not be used or reproduced in any way without the express consent of MKEC.

PAVING PLANS  
 STA. 91+22.93 TO  
 STA. 93+57.73

PROJECT NO.	87 N-0660-01
DATE	8/19/2019
SCALE	1"=20'
DESIGNED	JRA
DRAWN	WNJ
CHECKED	JRA

NO.	REVISION	DATE

SHEET NO.  
 14 OF 198