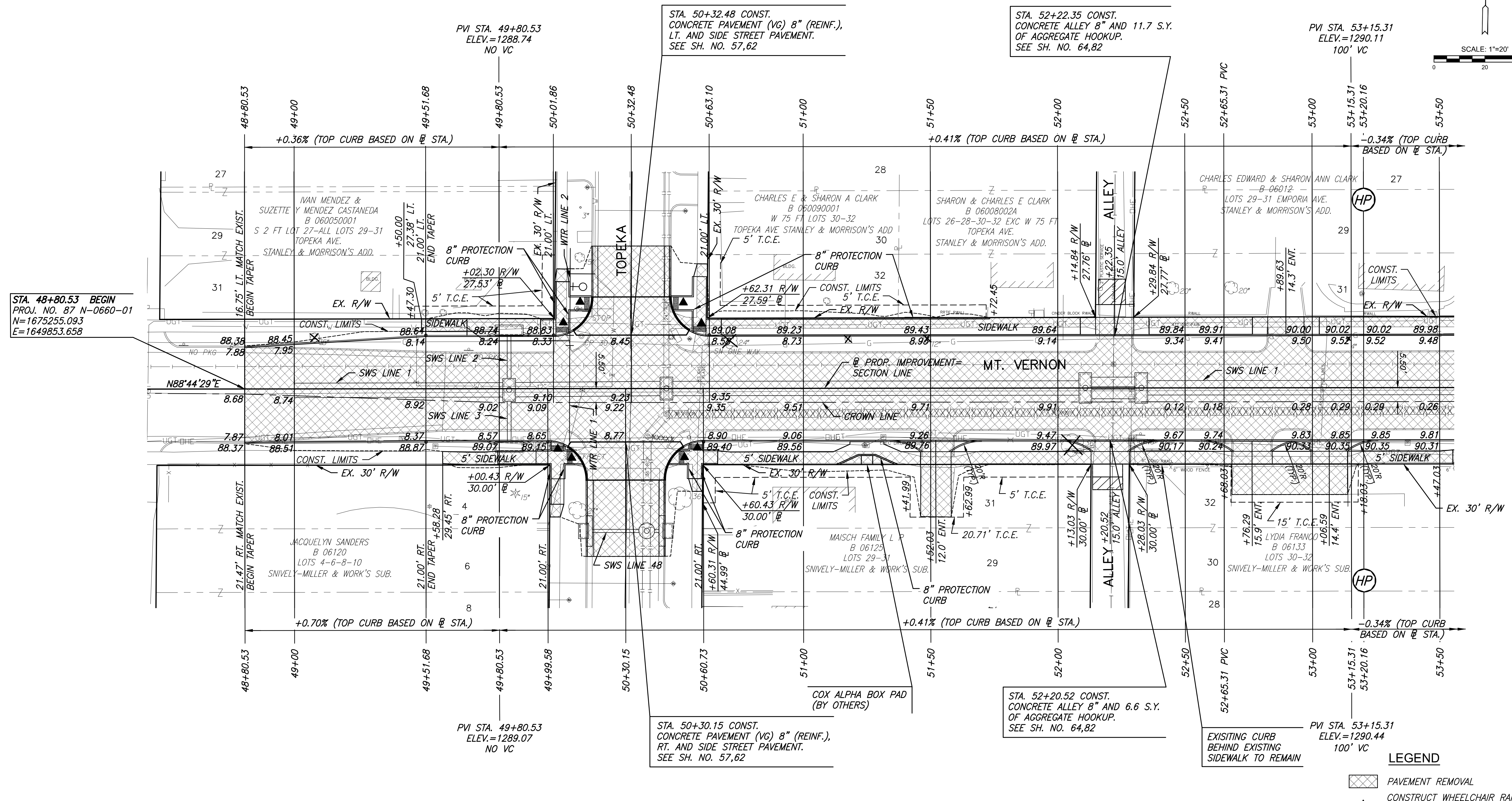
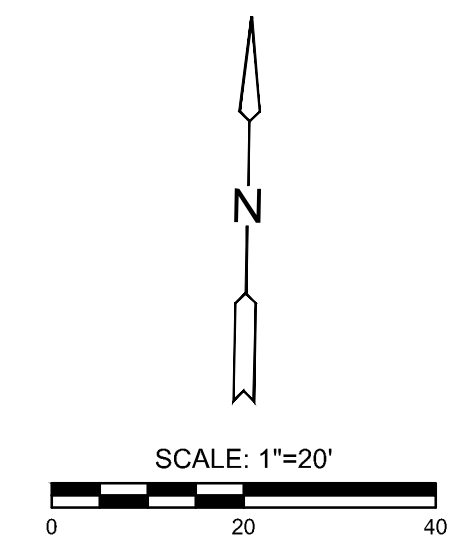


PLOTTED: Friday, August 23, 2019 @ 03:09PM

W 1/4 COR., SEC. 33, T27S, R1E
 STA. 46+46.80, 0.00' RT.
 1.
 2.
 3.
 4. N=1675249.958, E=1649619.983

PI STA. 46+46.80, MT VERNON
 1. N=1675249.958, E=1649619.983

STATE	PROJECT NO.	YEAR	SHEET NO.	TOTAL SHEETS
KANSAS	87 N-0660-01	2019	6	198



STA. 48+80.53 BEGIN
 PROJ. NO. 87 N-0660-01
 N=1675255.093
 E=1649853.658

UTILITY ADJUSTMENTS				
STATION	OFFSET	EXIST. ELEV.	PROP. ELEV.	REMARKS
49+67.88	24.05' LT.	1289.28	1288.98	VALVE BOX ADJUSTED
50+38.71	18.83' RT.	1289.12	1288.86	SWS MH ADJUSTED
50+46.11	10.13' RT.	1288.93	1289.15	SWS MH ADJUSTED
52+21.88	9.30' LT.	1289.08	1289.56	SS MH ADJUSTED

REMOVAL OF EXISTING PIPES AND STRUCTURES				
STATION	OFFSET	ITEM	REMARKS	
49+48.0 TO 50+24.9	1.1'-0.7' LT.	82.4' OF 12" PIPE		
50+40.6 TO 50+40.0	19.0'-20.9' RT.	9' OF 12" RCP		
50+40.0	20.9' RT.	CURB INLET		
50+46.1 TO 53+50.0	10.1' RT.	303.9' OF 36" RCP		
50+47.2 TO 50+50.3	20.5' LT.	2.2' OF 15" RCP		
50+50.3	20.7' LT.	CURB INLET		

PROTECTION CURB				
STATION TO STATION	SIDE	QUANTITY	REMARKS	
STA. 49+79.93 TO STA. 50+13.09	RT.	64.8	SW CORNER INTERSECTION TOPEKA	
STA. 49+96.80 TO STA. 50+16.86	LT.	52.8	NW CORNER INTERSECTION TOPEKA	
STA. 50+47.22 TO STA. 50+66.32	RT.	42.4	SE CORNER INTERSECTION TOPEKA	
STA. 50+48.10 TO STA. 50+67.81	LT.	56.1	NE CORNER INTERSECTION TOPEKA	
STA. 50+67.80 TO STA. 51+73.16	LT.	105.4	ALONG R/W	
STA. 51+12.75 TO STA. 51+37.36	RT.	26.3	ALONG SIDEWALK	

LEGEND

- PAVEMENT REMOVAL
- CONSTRUCT WHEELCHAIR RAMP SEE SH. NO. 68
- AGGREGATE HOOKUP
- BRICK PAVERS
- PAVEMENT REMOVED AND REPLACED
- 8" SIDEWALK
- STORM SEWER REMOVAL
- TREE REMOVAL
- CURB HEIGHT TRANSITION

STREET IMPROVEMENTS FOR
MT. VERNON IMPROVEMENTS
 BROADWAY TO SOUTHEAST BLVD.

©2019 MKEC Engineering All Rights Reserved
 These drawings and their contents, including, but not limited to, all concepts, designs, & lists are the exclusive property of MKEC Engineering (MKEC), and may not be used or reproduced in any way without the express consent of MKEC.

PAVING PLANS
 STA. 48+80.53 TO
 STA. 53+50

PROJECT NO.	87 N-0660-01
DATE	8/19/2019
SCALE	1"=20'
DESIGNED	JRA
DRAWN	WNJ
CHECKED	JRA

NO.	REVISION	DATE

SHEET NO.
 6 OF 198