



© 2019 GARVER, LLC  
 THIS DOCUMENT, ALONG WITH THE IDEAS AND DESIGNS CONVEYED HEREIN, SHALL BE CONSIDERED INSTRUMENTS OF PROFESSIONAL SERVICE AND ARE PROPERTY OF GARVER, LLC. ANY USE, REPRODUCTION, OR DISTRIBUTION OF THIS DOCUMENT, ALONG WITH THE IDEAS AND DESIGN CONTAINED HEREIN, IS PROHIBITED UNLESS AUTHORIZED IN WRITING BY GARVER, LLC OR EXPLICITLY ALLOWED IN THE GOVERNING PROFESSIONAL SERVICES AGREEMENT FOR THIS WORK.



Digitally Signed 11/19/2019

REV.	DATE	DESCRIPTION	BY

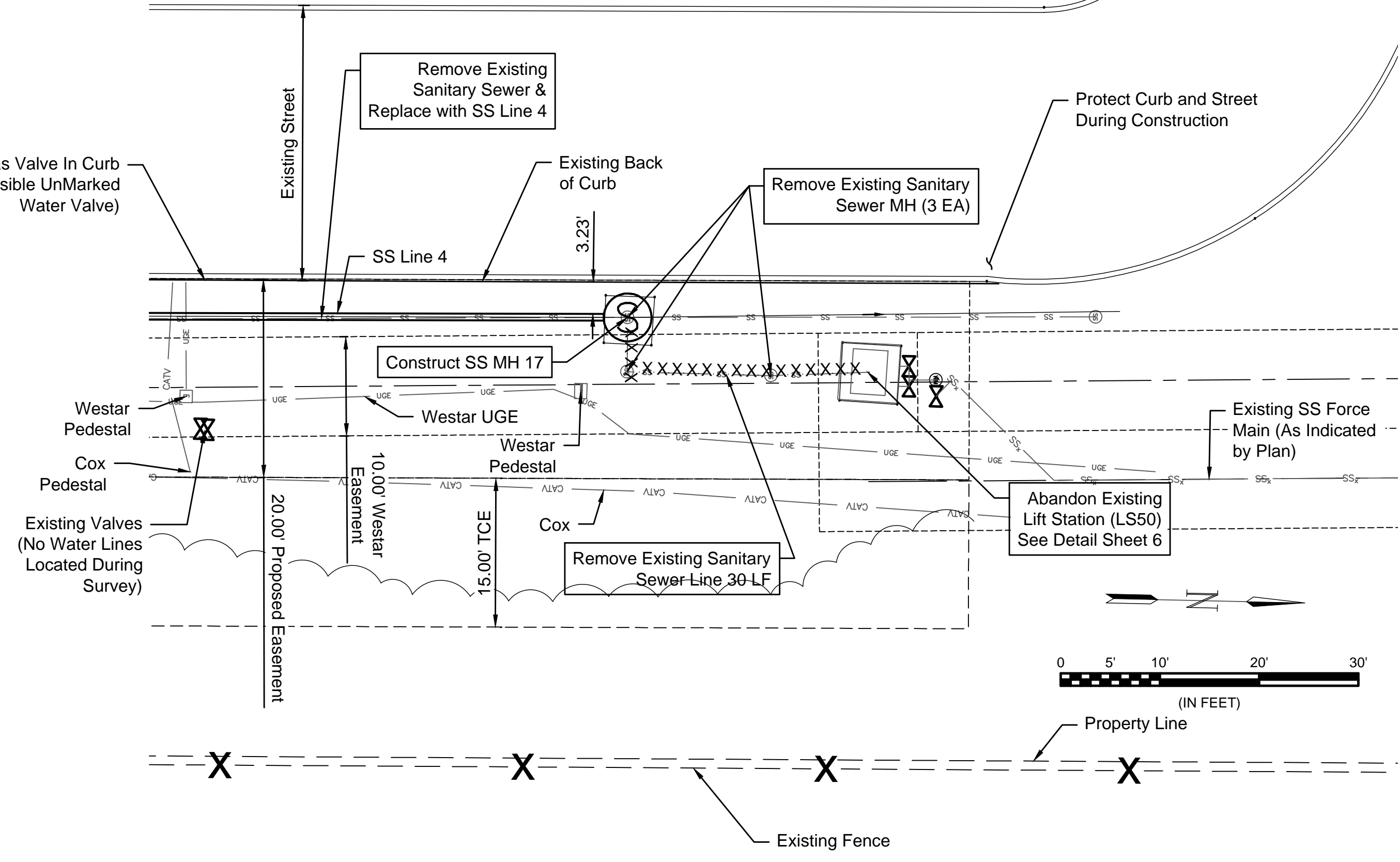
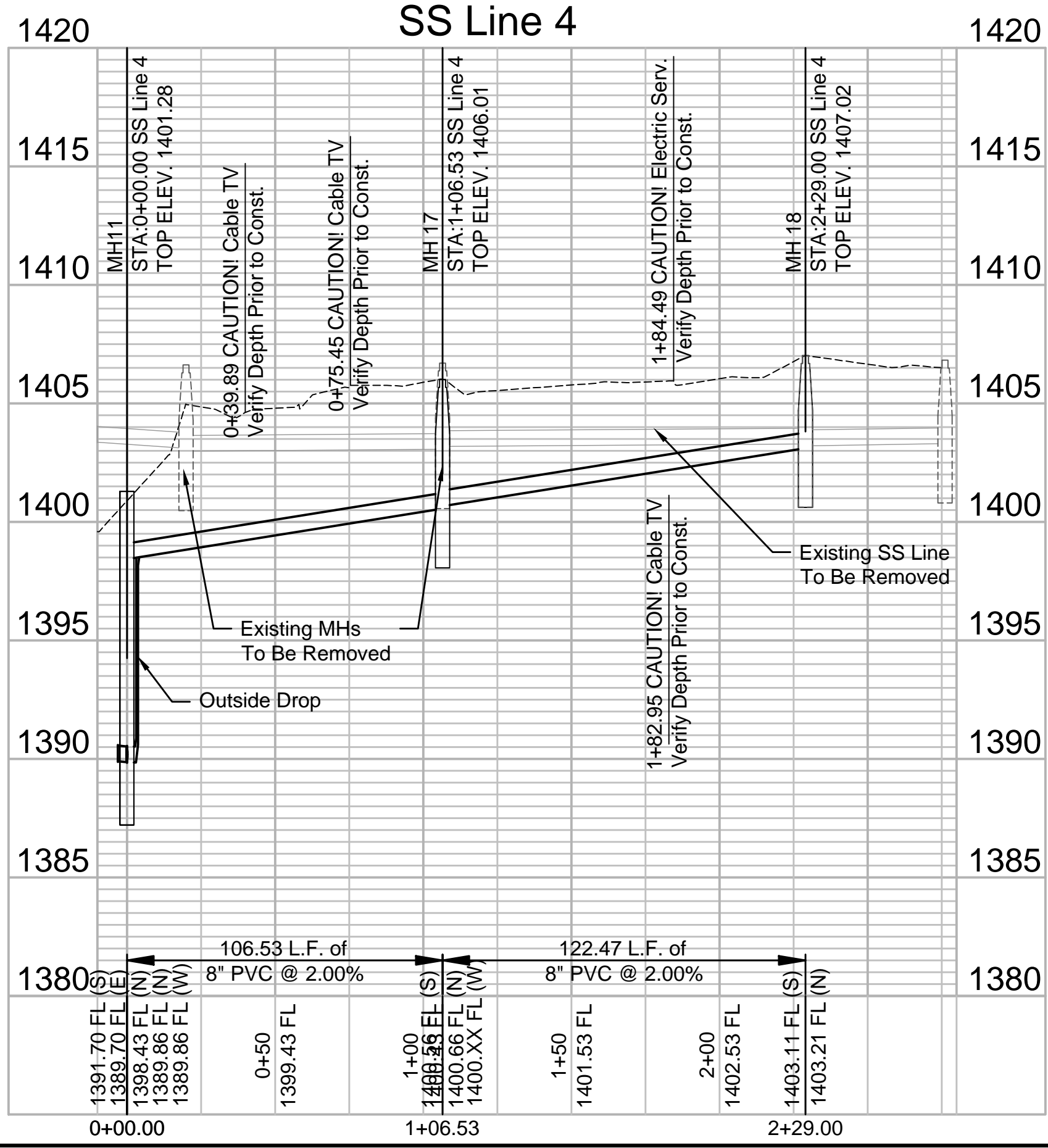
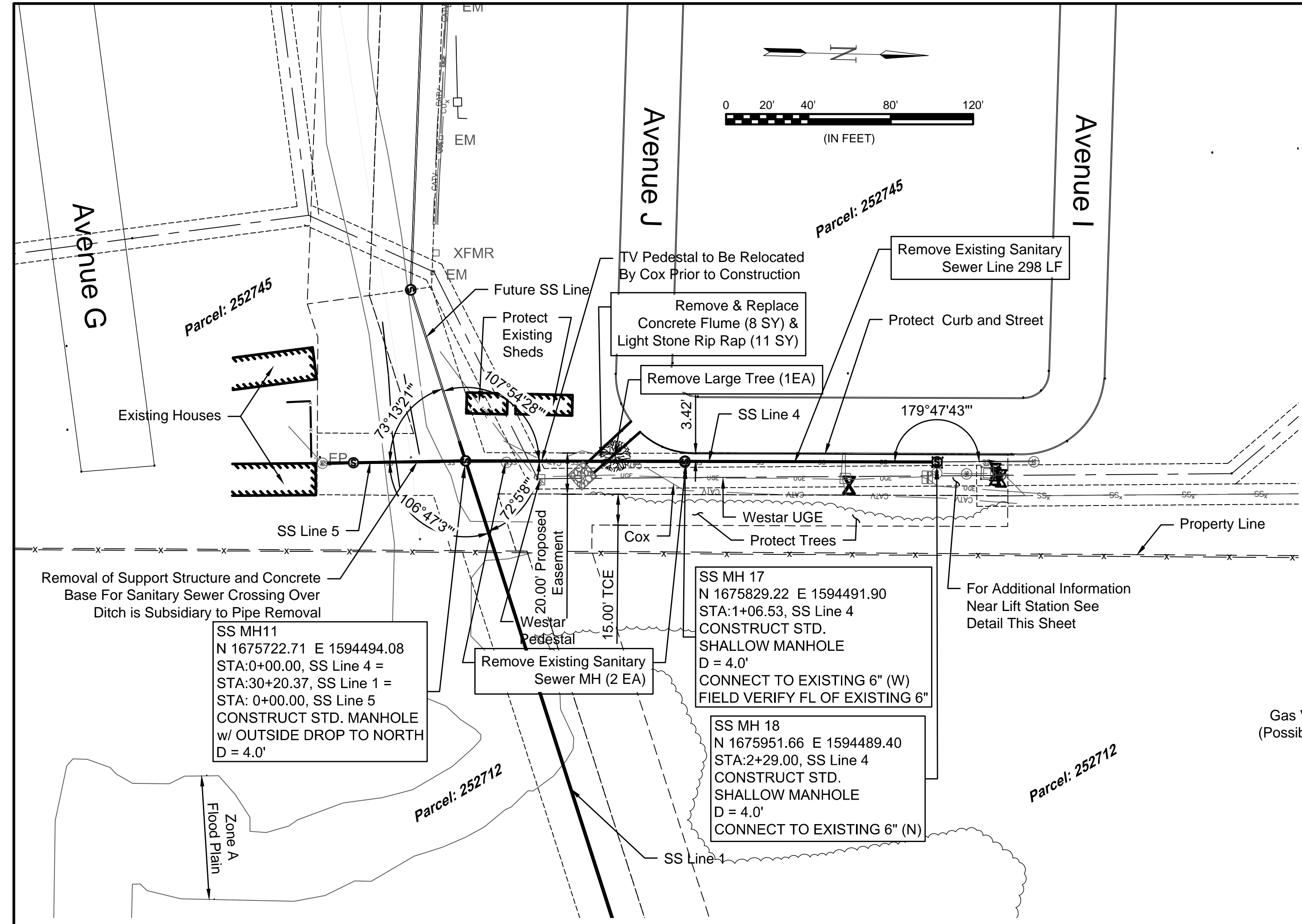


CITY OF WICHITA  
 WICHITA, KANSAS  
 Consolidation of Lift Stations  
 Near 151st St. & W. Kellogg

SS Line 4  
 JOB NO.: 17264967  
 DATE: NOV. 2019  
 DESIGNED BY: MTD  
 DRAWN BY: MTD  
 BAR IS ONE INCH ON ORIGINAL DRAWING  
 IF NOT ONE INCH ON THIS SHEET, ADJUST SCALES ACCORDINGLY.  
 DRAWING NUMBER  
 SHEET NUMBER **7** OF **36**

Notes

1. Tree removal and trimming should be limited to only those necessary for construction. The contractor shall protect all trees as specifically noted. All trees located outside of easements or trail right of way shall be protected.
2. Any bypass pumping necessary for construction shall be subsidiary to abandoning existing lift stations. Contractor to ensure that existing sanitary sewer flow is maintained and existing lift stations are operational until new lift station and force main is accepted and operational. Sanitary sewer service shall be maintained during the entire project.



DETAIL NEAR LIFT STATION (LS50)

File: L:\2017\17264967 - LS 53 Replacement No. 1\Drawings\C3D\Plan Sheets\SS Line 4 - (1).dwg Last Save: 11/13/2019 2:47 PM Last saved by: MTDolechek  
 Last plotted by: Dolechek, Mark T. Plot Style: --- Plot Scale: 1:2,584.9 Plot Date: 11/19/2019 8:45 AM Plotter used: None