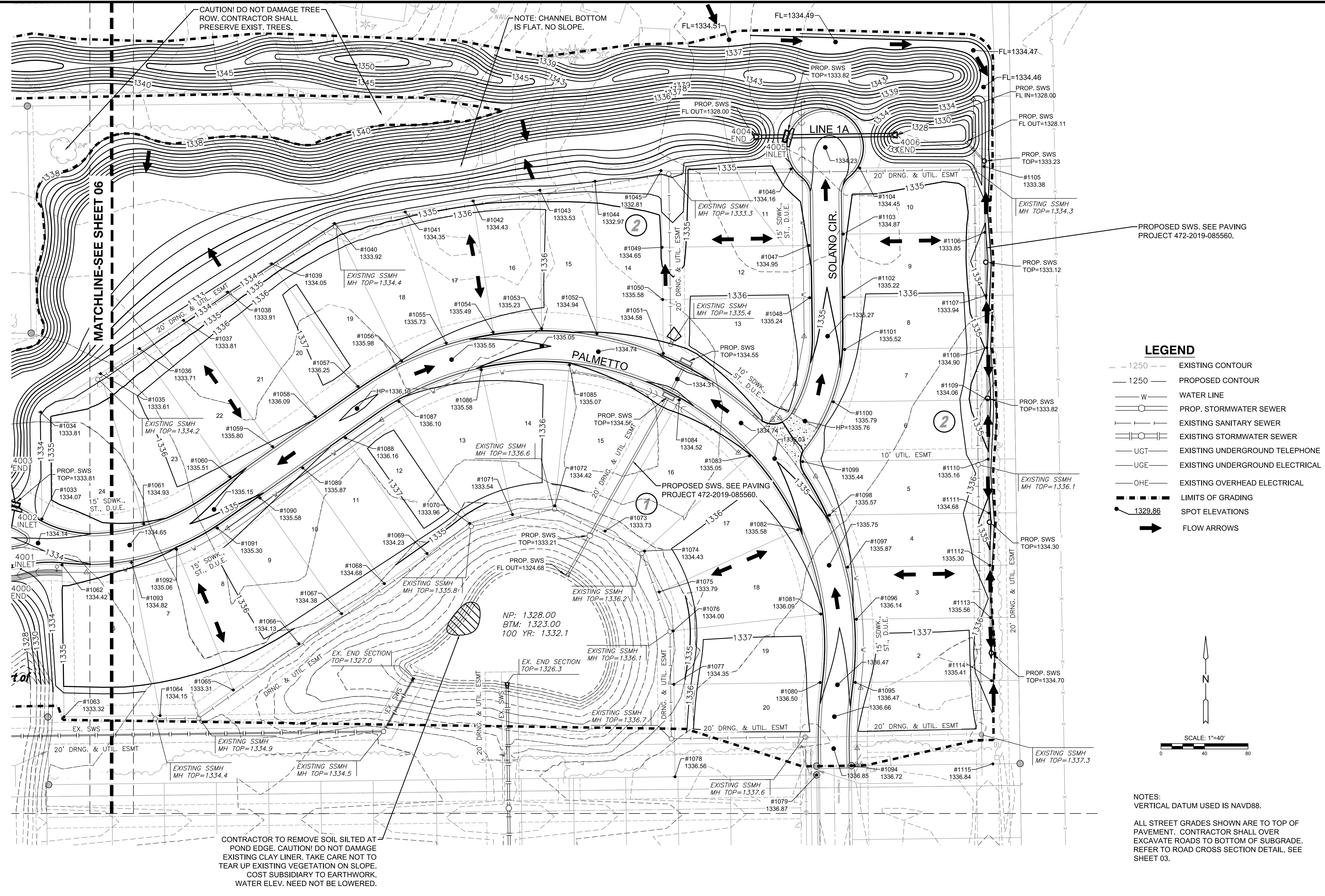


J:\PROJECTS\2019\10\10338_ESTANCIA_SECOND_18338_CAD\SHS\06 CIVIL\GRD\18338-06-200.DWG
 J:\PROJECTS\2019\10\10338_ESTANCIA_SECOND_18338_CAD\SHS\06 CIVIL\GRD\18338-06-200.DWG
 PLOTTED: Friday, December 20, 2019 @ 03:11PM



CAUTION! DO NOT DAMAGE TREE ROW. CONTRACTOR SHALL PRESERVE EXIST. TREES.

NOTE: CHANNEL BOTTOM IS FLAT. NO SLOPE.

MATCHLINE-SEE SHEET 06

LINE 1A

SOLANO CIR.

PALMETTO

PROPOSED SWS. SEE PAVING PROJECT 472-2019-085560.

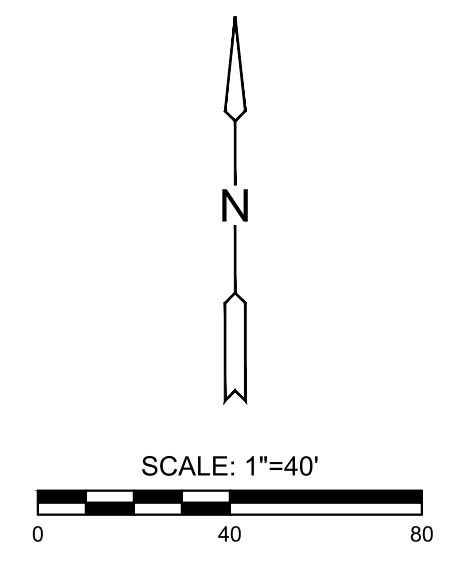
PROPOSED SWS. SEE PAVING PROJECT 472-2019-085560.

NP: 1328.00
BTM: 1323.00
100 YR: 1332.1

CONTRACTOR TO REMOVE SOIL SILTED AT POND EDGE. CAUTION! DO NOT DAMAGE EXISTING CLAY LINER. TAKE CARE NOT TO TEAR UP EXISTING VEGETATION ON SLOPE. COST SUBSIDIARY TO EARTHWORK. WATER ELEV. NEED NOT BE LOWERED.

LEGEND

- 1250 --- EXISTING CONTOUR
- 1250 — PROPOSED CONTOUR
- W — WATER LINE
- S — PROP. STORMWATER SEWER
- SSMH — EXISTING SANITARY SEWER
- SSMH — EXISTING STORMWATER SEWER
- UGT — EXISTING UNDERGROUND TELEPHONE
- UGE — EXISTING UNDERGROUND ELECTRICAL
- OHE — EXISTING OVERHEAD ELECTRICAL
- --- LIMITS OF GRADING
- 1329.86 SPOT ELEVATIONS
- ➔ FLOW ARROWS



NOTES:
VERTICAL DATUM USED IS NAVD88.

ALL STREET GRADES SHOWN ARE TO TOP OF PAVEMENT. CONTRACTOR SHALL OVER EXCAVATE ROADS TO BOTTOM OF SUBGRADE. REFER TO ROAD CROSS SECTION DETAIL, SEE SHEET 03.



GRADING & DRAINAGE PLANS FOR

ESTANCIA 2ND ADDITION

©2019 MKEC Engineering All Rights Reserved
www.mkec.com
These drawings and their contents, including, but not limited to, all concepts, designs, & ideas are the exclusive property of MKEC Engineering (MKEC), and may not be used or reproduced in any way without the express consent of MKEC.

**GRADING PLAN
2 OF 2**

PROJECT NO.	468-2019-085431
DATE	DEC. 2019
SCALE	1"=40'
DESIGNED	DFL
DRAWN	DML
CHECKED	DFL

NO.	REVISION	DATE