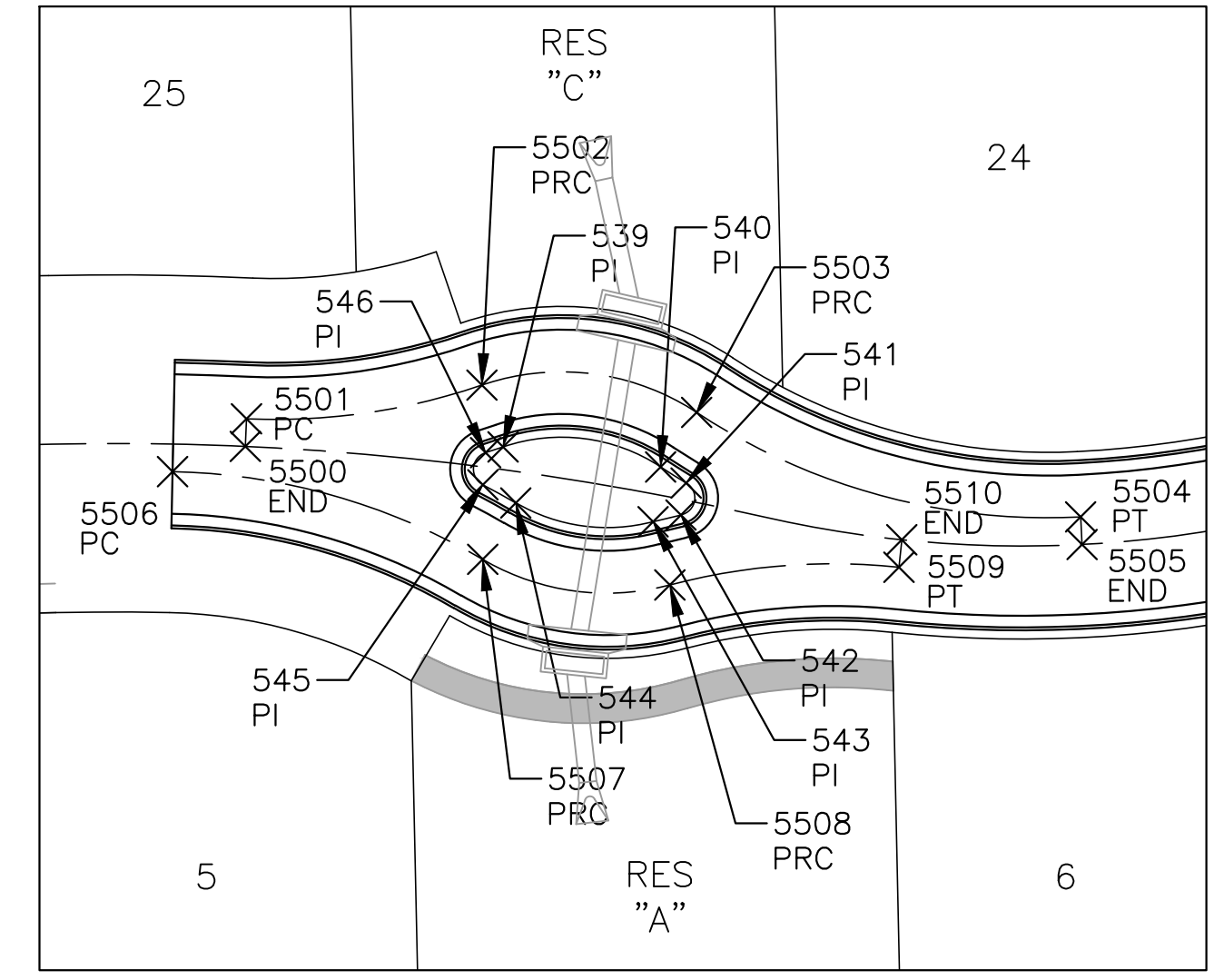
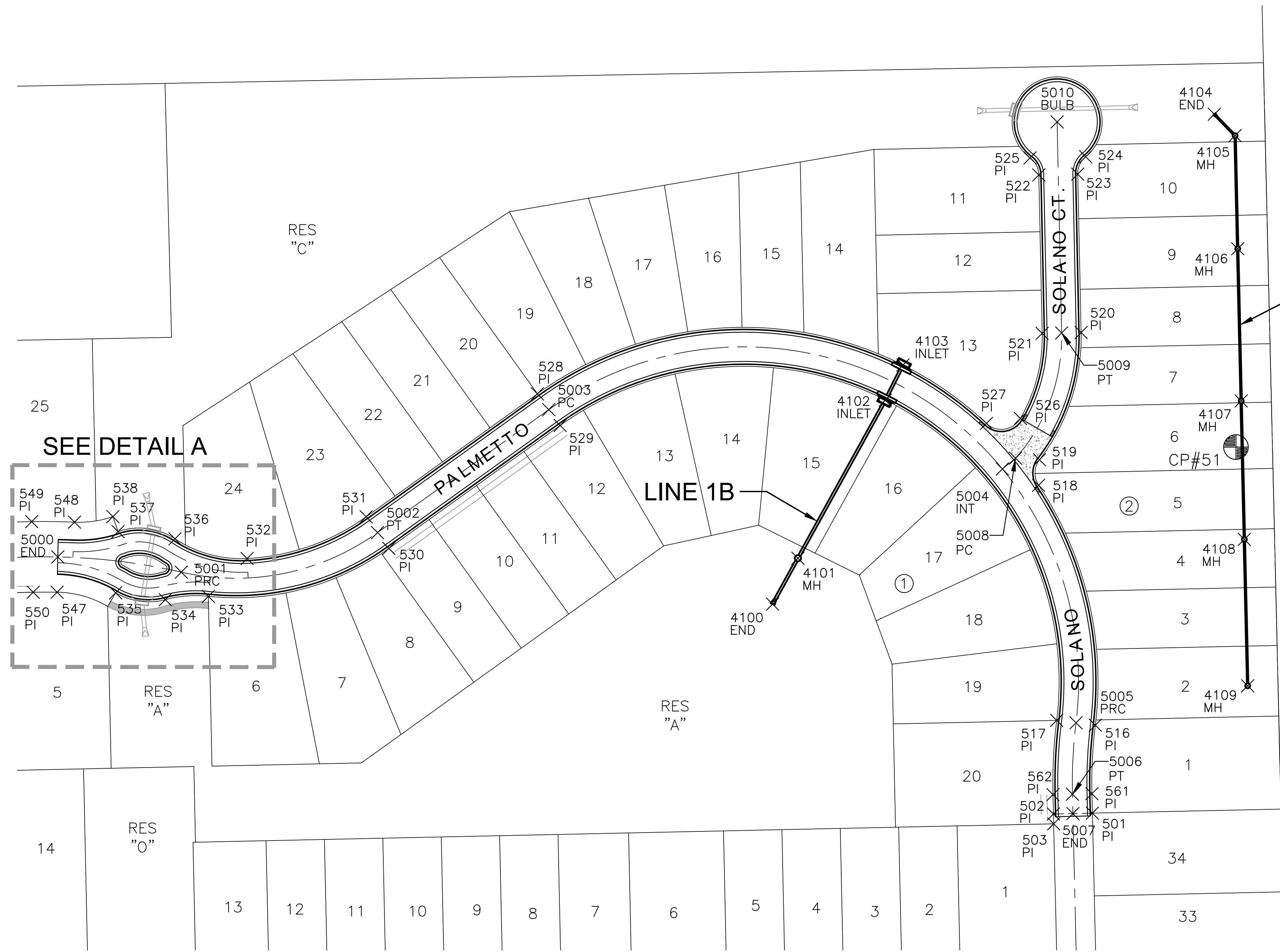


PLOTTED: Friday, December 20, 2019 @ 04:10PM

J:\PROJECTS\2019\19100102388_ESTANCIA_SECOND_18338_CAD\SHS\05 CIVIL\PAV\PH1\190388-05-6500.DWG



DETAIL A
SCALE: 1" = 30'

CONTROL POINTS

DATUM:
THE HORIZONTAL DATUM IS BASED ON THE KANSAS COORDINATE SYSTEM OF 1983(2011), SOUTH ZONE. COORDINATES SHOWN HAVE BEEN MODIFIED TO THE GROUND USING A COMBINED ADJUSTMENT FACTOR OF 1.0001200144. STATE PLANE COORDINATES CAN BE CALCULATED BY MULTIPLYING THE SHOWN VALUES BY 0.99988.

ALL ELEVATIONS SHOWN ARE BASED ON THE NAVD 88 VERTICAL DATUM.

CP#50 5/8" REBAR WITH MKEC ALUMINUM CAP, 1300 FEET EAST OF RIDGE RD. ON THE SOUTH SIDE OF VILLAGE CIR., 80 FEET WEST OF CONCRETE ENTRANCE DRIVE TO FARM HOUSE. 15 FEET SOUTH OF SIDEWALK
NORTHING = 1711490.124 EASTING = 1624127.580
ELEV. = 1335.95' NAVD 88

CP#51 5/8" REBAR WITH MKEC ALUMINUM CAP AT NORTHEAST PORTION OF SITE. 13 FEET WEST OF WEST EDGE OF TREE ROW AND 285 FEET NORTH OF NORTH EDGE OF TREE ROW. NORTH OF PLATTED LOT 34, BLOCK 1, ESTANCIA ADDITION.
NORTHING = 1711268.791 EASTING = 1625517.702
ELEV. = 1337.04' NAVD 88

BM#52 PLUS CUT/SQUARE CUT AT SOUTHWEST CORNER OF CURB INLET WEST SIDE OF SOLANO ST., 600 FEET NORTH OF 37TH ST. N., 28 FEET NORTH OF NORTH EDGE OF PARKING STALLS.
NORTHING = 1710171.016 EASTING = 1625356.019
ELEV. = 1334.12' NAVD 88

BM#53 PLUS CUT ON CITY OF WICHITA DISC AT TOP OF CURB, WEST SIDE OF ESTANCIA STREET, THREE FEET SOUTH OF CURB INLET, 600 FEET NORTH OF MAIN ENTRANCE AT 37TH ST. N.
NORTHING = 1710142.067 EASTING = 1624443.448
ELEV. 1333.50' NAVD 88

CP#54 5/8" REBAR WITH MKEC ALUMINUM CAP SOUTHWEST OF WEST END OF SECOND CULDESAC NORTH OF MAIN ENTRANCE ON ESTANCIA ST. SOUTHWEST OF SOUTHWEST CORNER LOT 40, BLOCK 3, ESTANCIA ADDITION.
NORTHING = 1710213.104 EASTING = 1623405.099
ELEV. = 1332.49' NAVD 88

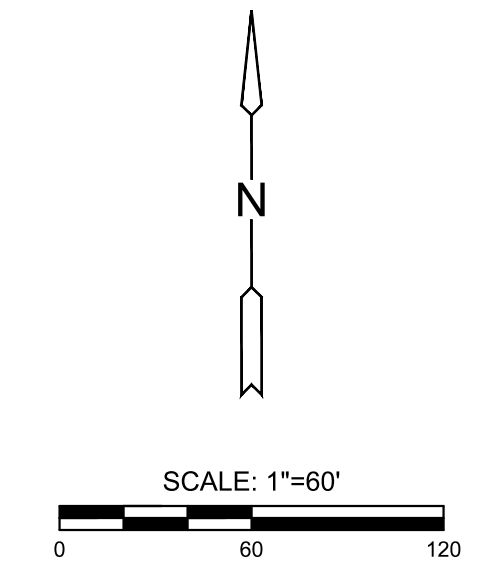
CP#55 5/8" REBAR WITH MKEC ALUMINUM CAP AT NORTHWEST SIDE OF LOT 65, BLOCK 3, ESTANCIA ADDITION.
NORTHING = 1710866.554 EASTING = 1623388.67
ELEV. = 1332.71' NAVD 88

CP#56 5/8" REBAR WITH MKEC ALUMINUM CAP, AT NORTHWEST SIDE OF LOT 72, BLOCK 3, ESTANCIA ADDITION, 6 FEET SOUTHEAST OF TOP OF BANK FOR POND.
NORTHING = 1710879.252 EASTING = 1623983.524
ELEV. 1333.39' NAVD 88

BM#57 PKN AND WASHER DRILLED INTO TOP OF CURB AT NORTHWEST CORNER OF 8 CAR PARKING BAY ON EAST SIDE OF CLUB HOUSE WEST SIDE OF SOLANO ST.
NORTHING = 1710607.21 EASTING = 1625354.12
ELEV. 1334.48' NAVD 88

BM#58 PKN AND WASHER DRILLED INTO NORTHEAST CORNER OF CURB INLET, EAST SIDE OF ESTANCIA ST., 70 FEET NORTH OF COLLINA ST.
NORTHING = 1710768.55 EASTING = 1624579.04
ELEV. 1333.63' NAVD 88

NOTE:
ALL CONTROL POINTS SHOWN HAVE ELEVATIONS ESTABLISHED USING STANDARD SURVEYING PROCEDURES AND CAN BE USED AS TEMPORARY BENCHMARKS. WHEN USING A CONTROL POINT AS A TEMPORARY BENCHMARK, IT IS RECOMMENDED THAT CROSS-CHECKS BE MADE TO OTHER CONTROL POINTS OR BENCHMARKS TO CONFIRM ELEVATIONS PRIOR TO USE.



EVERY ATTEMPT HAS BEEN MADE TO INSURE ALL COORDINATE VALUES SHOWN ARE AN ACCURATE AND TRUE REPRESENTATION OF THE CURRENT PLANS. ALL VALUES ARE TO BE CONFIRMED WITH THE FINAL SIGNED PLAN SET BEFORE USE.



PAVING & INCIDENTAL DRAINAGE FOR
ESTANCIA 2ND ADDITION
PHASE 1

©2019 MKEC Engineering All Rights Reserved www.mkec.com
These drawings and their contents, including, but not limited to, all concepts, designs, & ideas are the exclusive property of MKEC Engineering (MKEC), and may not be used or reproduced in any way without the express consent of MKEC.

BUBBLE MAP

PROJECT NO.	472-2019-085560	
DATE	DEC 2019	
SCALE	1" = 60'	
DESIGNED	DRAWN	CHECKED
DFL	JWC	GJA

NO.	REVISION	DATE