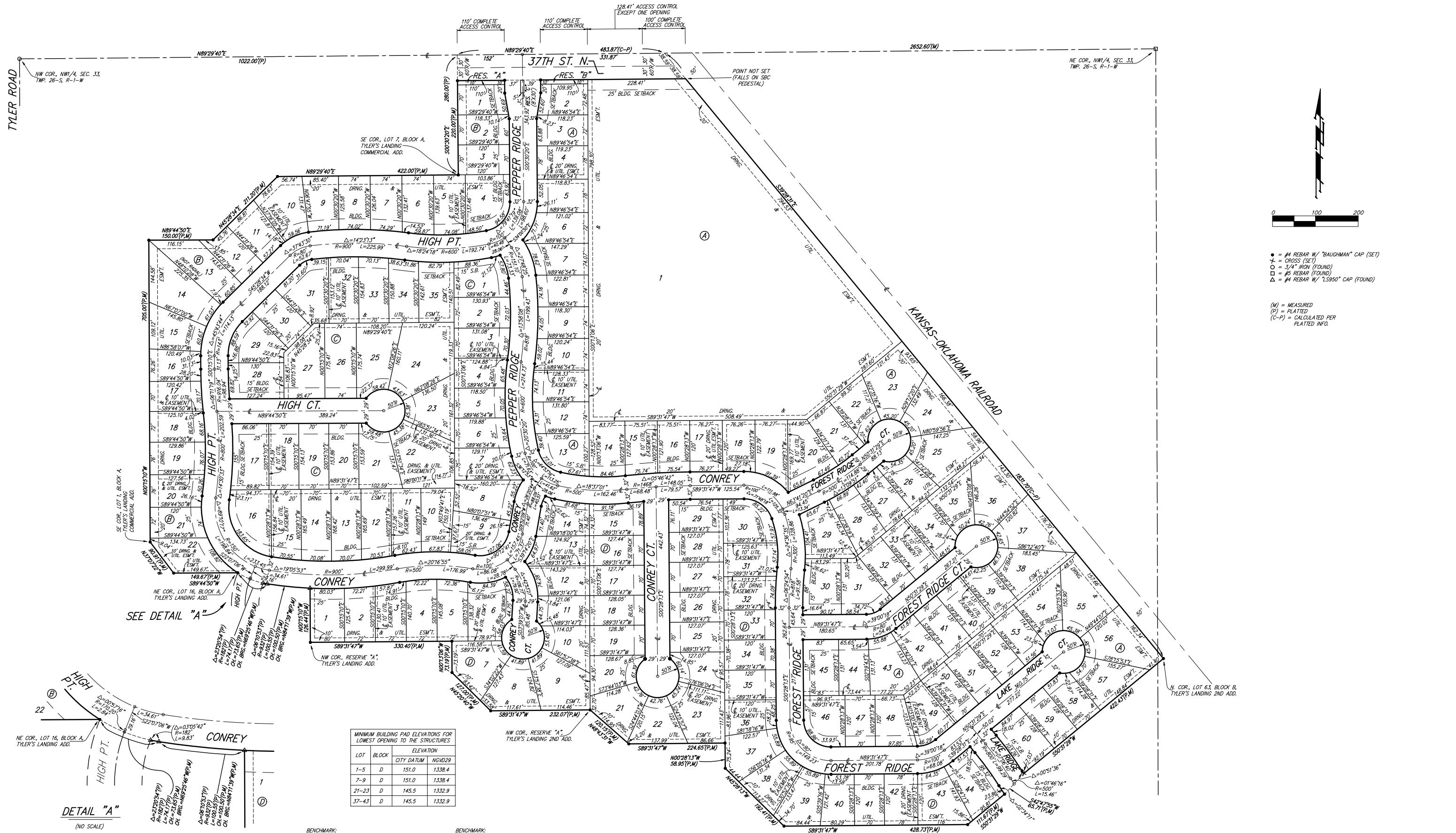


TYLER'S LANDING 3RD ADDITION

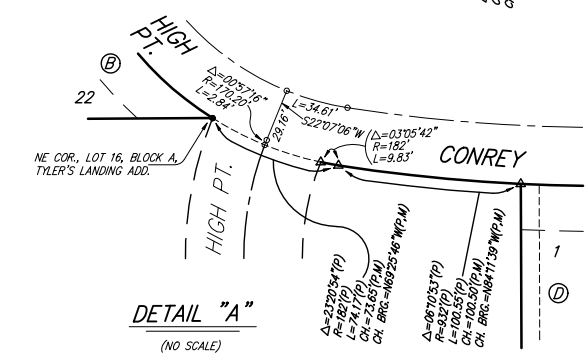
WICHITA, SEDGWICK COUNTY, KANSAS



- = #4 REBAR W/ "BAUGHMAN" CAP (SET)
- ⊕ = CROSS (SET)
- = 3/4" IRON (FOUND)
- = #5 REBAR (FOUND)
- △ = #4 REBAR W/ "LS950" CAP (FOUND)

(M) = MEASURED
(P) = PLATTED
(C-P) = CALCULATED PER PLATTED INFO.

SEE DETAIL "A"



LOT	BLOCK	ELEVATION
1-5	D	151.0
7-9	D	151.0
21-23	D	145.5
37-43	D	145.5

BENCHMARK:
3" BRASS DISC ON TOP OF CURB AT NORTHWEST END OF CURB RETURN, NORTHEAST CORNER OF THE INTERSECTION OF LAKE RIDGE AND LAKE RIDGE CT., TYLER'S LANDING 2ND ADD.
BRASS DISC IS SOUTHWEST OF FIRE HYDRANT.
BRASS DISC IS SOUTHWEST OF THE MOST SOUTHERLY CORNER OF LOT 67, BLOCK B, IN SAID TYLER'S LANDING 2ND ADD.
ELEV. = 1332.77 NGVD29
(145.37 CITY DATUM)

BENCHMARK:
3" BRASS DISC ON TOP OF NORTH CURB ON 34TH STREET NORTH IN TYLER'S LANDING 2ND ADD.
BRASS DISC IS SOUTH OF FIRE HYDRANT.
BRASS DISC IS SOUTH OF THE SOUTH LOT CORNER COMMON TO LOTS 7 AND 8, BLOCK A, IN SAID TYLER'S LANDING 2ND ADD.
ELEV. = 1335.64 NGVD29
(148.24 CITY DATUM)

NOTE:
A master grading plan for drainage has been developed for this subdivision and is on file with the City of Wichita, Kansas. All drainage easements, rights-of-way, or reserves shall remain at established grades or as modified with the approval of the City Engineer of the City of Wichita, Kansas. No obstructions which impede the flow of this drainage system shall be allowed.

NOTE:
A drainage plan has been developed for this subdivision and is on file with the City of Wichita, Kansas. Drainage intent shall remain as depicted or as modified with the approval of the City Engineer of the City of Wichita, Kansas. No obstructions which impede the flow of this drainage plan shall be allowed.