

GENERAL NOTES

- THE CONTRACTOR SHALL BE RESPONSIBLE FOR PRESERVING PROPERTY IRONS SHOWN ON PLANS. THE CONTRACTOR SHALL BE REQUIRED TO RE-ESTABLISH ANY PROPERTY IRONS WHICH ARE DAMAGED OR DESTROYED BY HIS CONSTRUCTION OPERATIONS. SUCH IRONS SHALL BE RE-ESTABLISHED BY A LICENSED LAND SURVEYOR IN ACCORDANCE WITH STATE LAWS.
- EXISTING UTILITIES AND THEIR LOCATIONS AS SHOWN ON THE PLANS REPRESENT THE BEST INFORMATION OBTAINABLE FOR DESIGN. LOCATION INFORMATION HAS BEEN OBTAINED FROM THE VARIOUS UTILITY COMPANIES AND IS EITHER FROM COMPANY RECORD DRAWINGS OR COMPANY PROVIDED FIELD LOCATIONS. THE PLAN LOCATIONS SHOWN ARE NOT GUARANTEED. ADDITIONAL EXISTING UTILITIES MAY BE ENCOUNTERED.
- CONTRACTOR SHALL PROVIDE A MINIMUM ADVANCE NOTICE OF FORTY-EIGHT (48) HOURS TO UTILITY COMPANIES PRIOR TO STARTING ANY EXCAVATION AS FOLLOWS:
 KANSAS ONE-CALL 1-800-344-7233 OR 687-2470 (LOCAL WICHITA)
 THE CONTRACTOR MUST NOTIFY THE FOLLOWING IN CASE OF AN EMERGENCY:
 SOUTHWESTERN BELL TELEPHONE COMPANY 1-800-734-7590
 WICHITA PUBLIC SCHOOLS TELEPHONE CABLE 1-316-833-2000
 CABLEVISION 1-316-262-0661
 KC&E (GAS & ELECTRIC) 1-316-383-8600
 CITY OF WICHITA WATER & SEWER MAINTENANCE 1-316-262-4908
 BEL AIRE (WATER) 1-316-744-2451
 PARK CITY (WATER) 1-316-744-3865
 KECHI (WATER & GAS) 1-316-744-9287
 WILLIAMS NATURAL GAS 1-316-529-6600
 PHILLIPS PIPELINE 1-800-324-9696
 1-316-838-3411
 JAYHAWK PIPELINE 1-800-766-8230
 1-316-755-0241
 KINDER-MORGAN PIPELINE 1-800-542-9575
 KANSAS PIPELINE 1-316-838-3361
 KINNET, INC FIBER OPTIC 1-800-967-8989
- UNDERGROUND UTILITY SERVICE LINES AND OVERHEAD UTILITY POLE LINES ARE TO BE ADJUSTED AS NECESSARY BY OTHERS PRIOR TO CONSTRUCTION UNLESS THE PLANS SPECIFICALLY CALL FOR THEIR ADJUSTMENT BY THE CONTRACTOR OR UNLESS THE PLANS SPECIFICALLY IDENTIFY A UTILITY TO BE ADJUSTED BY ITS OWNER DURING CONSTRUCTION. EXISTING UTILITIES AND THEIR LOCATIONS AS SHOWN ON THE PLANS REPRESENT THE BEST INFORMATION OBTAINABLE FOR DESIGN. THE CONTRACTOR WILL BE REQUIRED TO WORK AROUND EXISTING UTILITIES WITHIN THE RIGHT-OF-WAY WHICH DO NOT CONFLICT WITH PROPOSED CONSTRUCTION.
- RUBBLE FROM THE REMOVAL OF MISCELLANEOUS STRUCTURES AND EXCESS EXCAVATION WHICH IS TO BE WASTED SHALL BE DISPOSED OF ON SITES TO BE PROVIDED BY THE CONTRACTOR. THESE SITES SHALL BE APPROVED BY THE ENGINEER AS TO SUITABILITY, APPEARANCE AND SITE LOCATION. LOCATIONS THAT, IN THE OPINION OF THE ENGINEER, WILL LEAVE AN UNSIGHTLY APPEARANCE WILL NOT BE APPROVED. ALL DISPOSAL SITES MUST BE APPROVED BY THE KANSAS DEPARTMENT OF HEALTH AND ENVIRONMENT. MATERIAL EITHER STOCKPILED OR DISPOSED OF IN A FLOOD PLAIN WILL REQUIRE A KANSAS STATE BOARD OF AGRICULTURE PERMIT. ANY MATERIAL DUMPED IN WATERS OF THE UNITED STATES OR WETLANDS IS SUBJECT TO U. S. CORPS OF ENGINEERS PERMITTING REGULATIONS. ANY MATERIAL BURIED OR STOCKPILED BEYOND APPROVED CONSTRUCTION LIMITS WILL REQUIRE ADDITIONAL ARCHAEOLOGICAL INVESTIGATIONS UNLESS BURIED IN A PREVIOUSLY APPROVED BORROW LOCATION. COST OF EXCAVATION HAULING AND DUMPING OF EXCESS EXCAVATION SHALL BE SUBSIDIARY TO THE PROJECT.
- THE CONTRACTOR SHALL GIVE ALL PROPERTY OWNERS AND/OR TENANTS OF DEVELOPED PROPERTY ADJUTING THE CONSTRUCTION OF THIS PROJECT A MINIMUM OF (48) HOURS ADVANCE NOTICE PRIOR TO START OF CONSTRUCTION.
- ALL CONSTRUCTION AND MATERIALS SHALL COMPLY WITH CITY OF WICHITA STANDARD SPECIFICATIONS.
- THE CONTRACTOR SHALL LIMIT THE EXTENT OF TRENCH TO REMAIN OPEN OVERNIGHT AND WEEKENDS TO LESS THAN 50 FEET.
- THE CONTRACTOR SHALL RESTORE ALL DITCHES, CHANNELS, BANK STABILIZATION, SWALES, ROAD SHOULDERS, PAVEMENT ENTRANCES, AND BANKS TO THEIR ORIGINAL SLOPES AND GRADES. WHERE EXISTING ENTRANCE PIPE, DRAINAGE PIPE, SPRINKLER SYSTEMS, SIDEWALKS, DRIVES, SIGNS, FENCES, MAIL BOXES, ETC., CONFLICT WITH THE PROPOSED WORK HEREIN THEY SHALL BE REMOVED AND REPLACED OR RESET IN LIKE KIND. ALL OF THE ABOVE INCLUDING TREES, SHRUBS, GRASS, SOD AND OTHER LANDSCAPING, WHERE NOTED, SHALL BE CONSIDERED SUBSIDIARY TO OTHER ITEMS BID.
- TREES AND SHRUBS IN PUBLIC RIGHTS-OF-WAY WHICH ARE IN DIRECT CONFLICT WITH PROPOSED NEW CONSTRUCTION SHALL BE REMOVED BY THE CONTRACTOR AS NOTED IN THE DRAWING OR AS DIRECTED BY THE ENGINEER. THE CONTRACTOR SHALL RESTORE AND REPLACE LANDSCAPE FEATURES AND PLANTINGS AS NOTED IN THE DRAWINGS OR AS DIRECTED BY THE ENGINEER. TREES AND SHRUBS WHICH ARE NOT IN DIRECT CONFLICT WITH PROPOSED NEW CONSTRUCTION SHALL BE SAVED AND PROTECTED FROM DAMAGE. COSTS SHALL BE INCLUDED IN THE PRICE BID FOR THE SITE CLEARING.
- POSITIVE DRAINAGE SHALL BE PROVIDED FOR ALL AREAS ON OR NEAR SPOIL AREAS. NATURAL DRAINAGE WAYS SHALL BE MAINTAINED. THE COST OF GRADING SHALL BE CONSIDERED SUBSIDIARY TO OTHER ITEMS BID.
- WHERE REMOVAL OF EXISTING FENCES NEXT TO THE CONSTRUCTION IS DEEMED NECESSARY BY THE CONTRACTOR, THE CONTRACTOR SHALL COORDINATE REMOVAL WITH ADJACENT PROPERTY OWNERS. ALL REMOVAL AND RESETING OF FENCES SHALL BE CONSIDERED SUBSIDIARY TO OTHER ITEMS BID.
- ALL ELEVATIONS SHOWN ARE NGVD DATUM. CITY DATUM = NGVD - 1187.4.
- ALL EXISTING GRASSED AREAS WHICH ARE DISTURBED OR DAMAGED DURING CONSTRUCTION OPERATIONS SHALL BE RESTORED TO ORIGINAL CONDITIONS, AND RE-SEEDED OR RE-SODDED IN LIKE KIND, UNLESS OTHERWISE NOTED ON THE PLANS. COSTS SHALL BE CONSIDERED SUBSIDIARY TO OTHER ITEMS BID. APPLICATION RATE FOR THE VARIOUS SEED MIXTURES SHALL BE AS APPROVED BY THE ENGINEER. SEEDING SHALL CONFORM TO APPLICABLE REQUIREMENTS OF STANDARD SPECIFICATIONS. SODDING SHALL CONFORM TO APPLICABLE REQUIREMENTS OF SUPPLEMENTAL SPECIFICATIONS.
- SLOPES STEEPER THAN 10 TO 1 SHALL BE MULCHED AS REQUIRED BY STANDARD SPECIFICATIONS. COST OF MULCHING SHALL BE INCLUDED IN PRICE BID FOR SITE RESTORATION.
- THE COST OF EXCAVATION, HAULING, AND DUMPING, SHALL BE SUBSIDIARY TO OTHER ITEMS BID.
- CONTRACTOR SHALL INSTALL PLASTIC SEWER MANHOLE MARKERS. SEWER DEPARTMENT WILL PROVIDE THE MATERIALS. COST TO INSTALL MARKERS SUBSIDIARY TO MANHOLES.

MAIN 13, SS #23

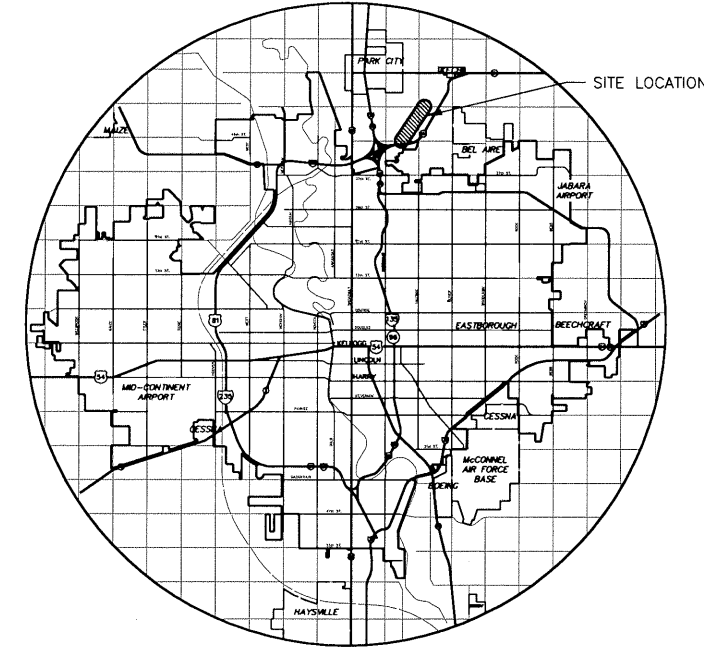
PHASE 2

PROJECT NO. 468-83262

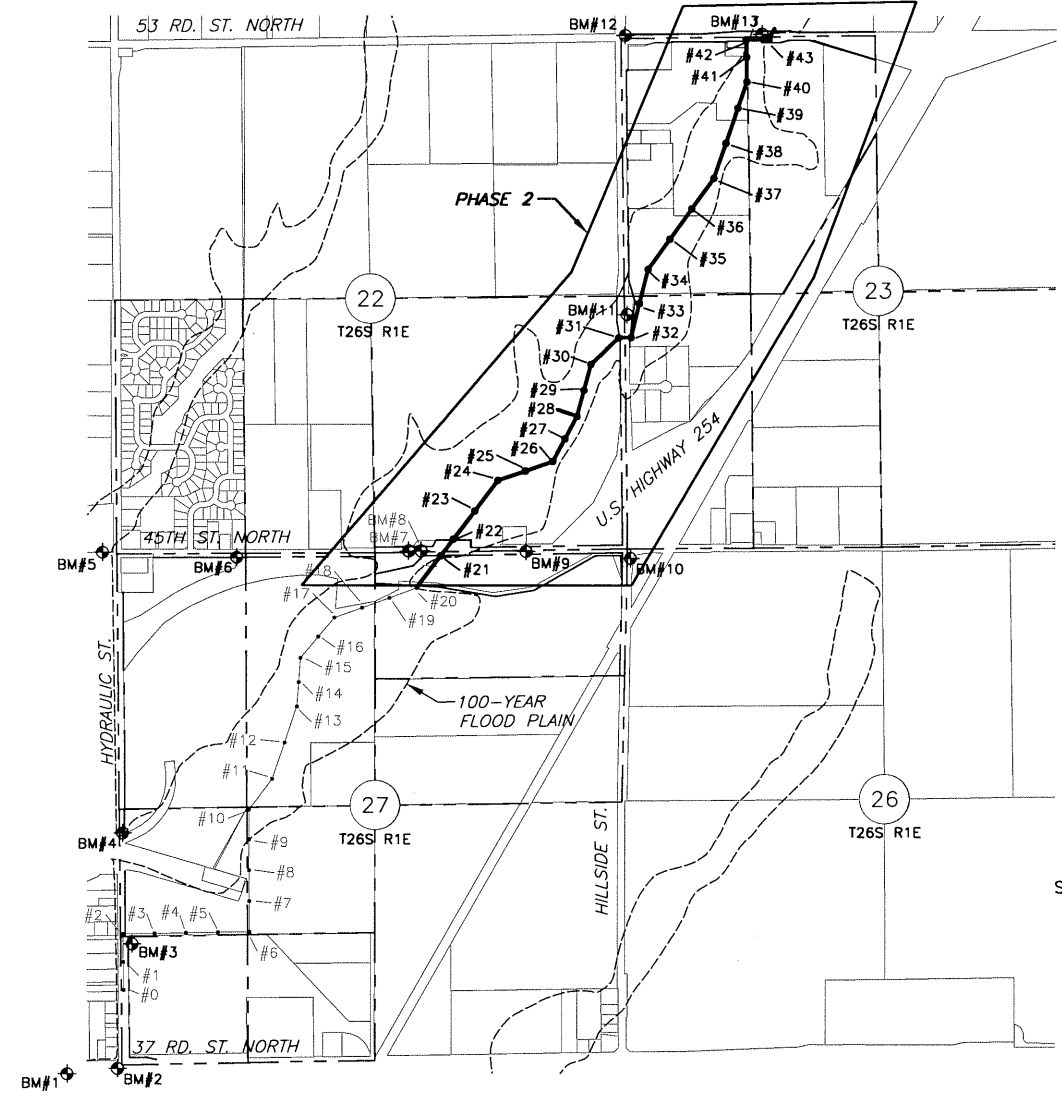
CITY OF WICHITA, KANSAS
MICHAEL E. LINDEBAK, CITY ENGINEER
OCA 624072

PROJECT NO. 468-83459

CITY OF WICHITA, KANSAS
MICHAEL E. LINDEBAK, CITY ENGINEER
OCA 743942



LOCATION MAP



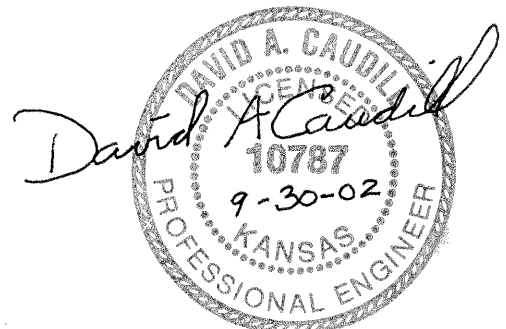
SCALE: 1" = 1000'

LEGEND

- | | |
|--|--|
| <ul style="list-style-type: none"> ○ 1IN - TREE AND DIAMETER — SN — SN - SIGN AND POSTS ⊙ 1P-1/2" MID-KANSAS BAR - IRON PIPE AND DESCRIPTION 214 x 49 - SPOT ELEVATION AND LOCATION PP — POWER POLE AND DEADMAN ■ KGE - ELECTRIC BOX → - DRAINAGE ARROW — E — UNDERGROUND ELECTRIC LINE — OHE — OVERHEAD ELECTRIC LINE — X — X — X — FENCE BM # - BENCHMARK ⊙ SWMH - STORM WATER MANHOLE | <ul style="list-style-type: none"> ⊙ SSMH - SANITARY SEWER MANHOLE — — — — — RETAINING WALL ● LP - LIGHT POLE ⊙ FH - FIRE HYDRANT ⊙ WV - WATER VALVE ⊙ WM - WATER METER ICV - IRRIGATION CONTROL VALVE □ - GRATE INLET ⊙ TR - TELEPHONE RISER — — — — — STORM SEWER PIPE — W — WATER LINE — SS — SANITARY SEWER LINE — G — GAS LINE — T — TELEPHONE LINE |
|--|--|

INDEX TO DRAWINGS

SHEET NO.	DESCRIPTION
1	TITLE SHEET
2	MANHOLE DETAILS
3	MISCELLANEOUS DETAILS, BENCHMARKS, AND CONTROL POINTS
4	SOIL EROSION BMP DETAILS
5	SOIL EROSION BMP SUBDIVISION
6-12	DEVELOPMENT DETAILS PLAN / PROFILE SHEETS



MKEC
ENGINEERING CONSULTANTS
411 N. WEBB ROAD
WICHITA, KS. 67208
316-684-9600

MAIN 13, SS #23 (PHASE 2)
PROJECT NAME

TITLE SHEET
SHEET TITLE

D. CAUDILL RDH D. CAUDILL
DESIGN BY: DRAWN BY: CHECKED BY:

SEPTEMBER 30, 2002 01138BT 1 / 12
DATE DRAWING NAME SHEET / OF