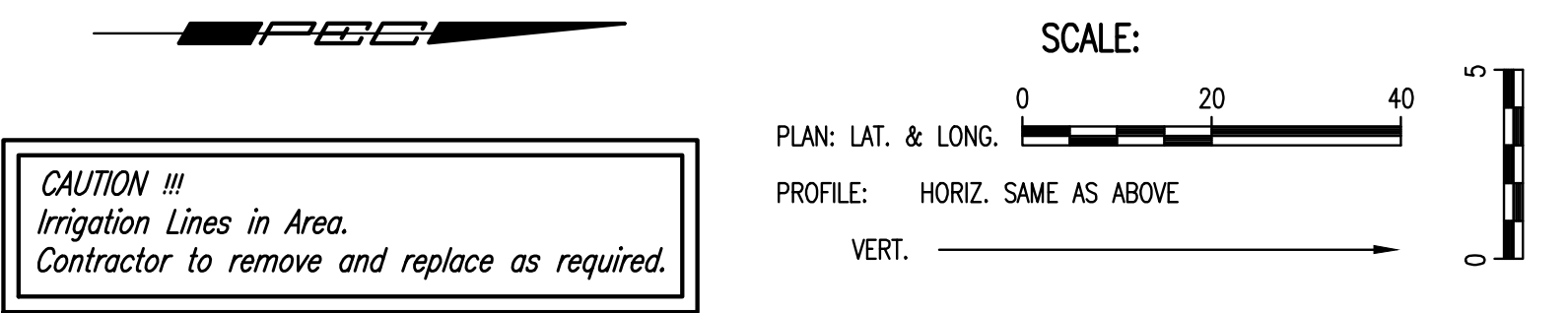
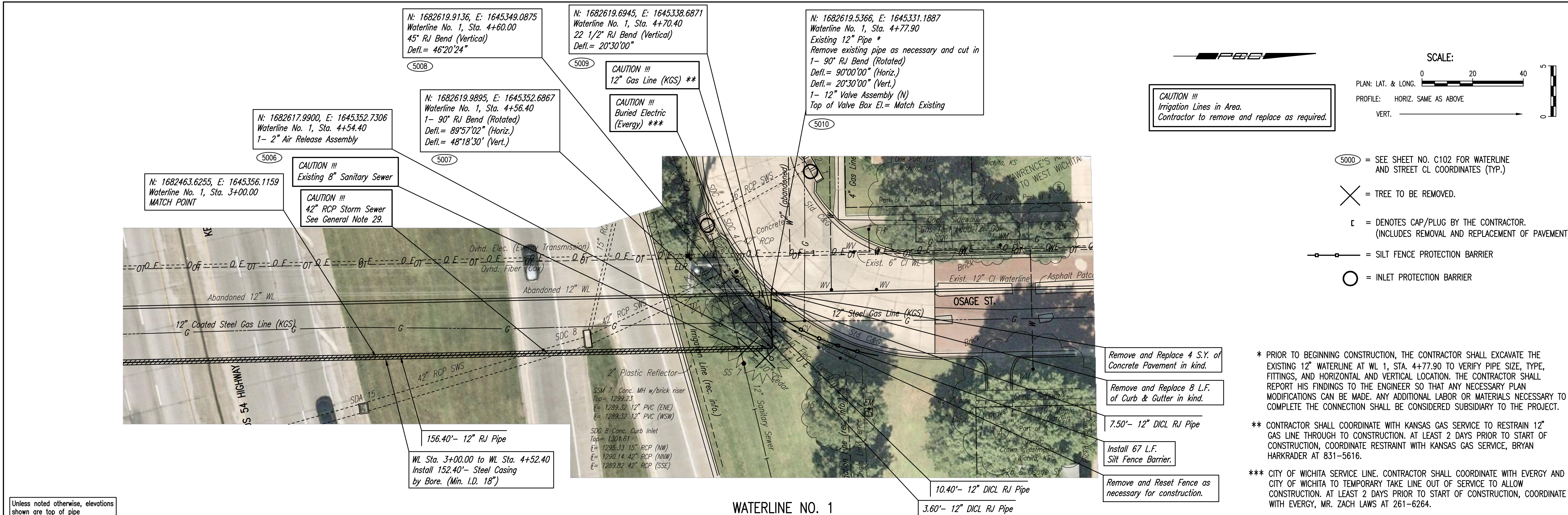


Sheet 12 of 12 - 2019 11.26.24 AM by MURTI BECAT  
 Plot Scale: 1" = 10' - 2019 05.27.20  
 U:\Wichita-Civil\2019\197042-009\Drawings\197042-009-C104

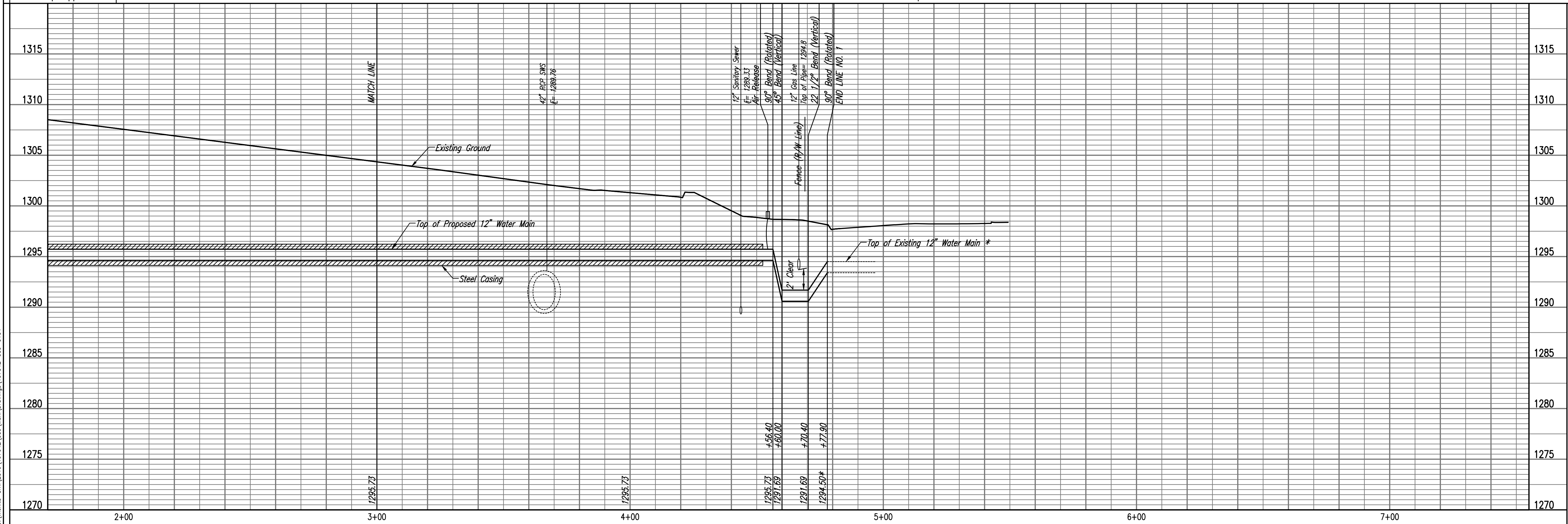


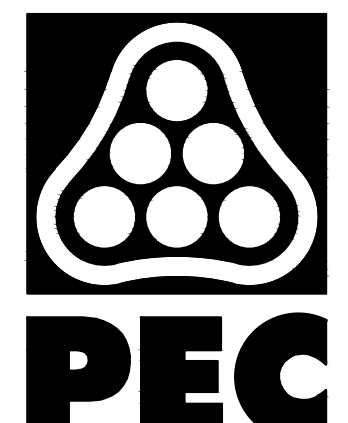
- 5000 = SEE SHEET NO. C102 FOR WATERLINE AND STREET CL COORDINATES (TYP.)
- X = TREE TO BE REMOVED.
- C = DENOTES CAP/PLUG BY THE CONTRACTOR. (INCLUDES REMOVAL AND REPLACEMENT OF PAVEMENT)
- [Symbol] = SILT FENCE PROTECTION BARRIER
- O = INLET PROTECTION BARRIER

\* PRIOR TO BEGINNING CONSTRUCTION, THE CONTRACTOR SHALL EXCAVATE THE EXISTING 12" WATERLINE AT WL 1, STA. 4+77.90 TO VERIFY PIPE SIZE, TYPE, FITTINGS, AND HORIZONTAL AND VERTICAL LOCATION. THE CONTRACTOR SHALL REPORT HIS FINDINGS TO THE ENGINEER SO THAT ANY NECESSARY PLAN MODIFICATIONS CAN BE MADE. ANY ADDITIONAL LABOR OR MATERIALS NECESSARY TO COMPLETE THE CONNECTION SHALL BE CONSIDERED SUBSIDIARY TO THE PROJECT.


\*\* CONTRACTOR SHALL COORDINATE WITH KANSAS GAS SERVICE TO RESTRAIN 12" GAS LINE THROUGH TO CONSTRUCTION. AT LEAST 2 DAYS PRIOR TO START OF CONSTRUCTION, COORDINATE RESTRAINT WITH KANSAS GAS SERVICE, BRYAN HARKRADER AT 831-5616.

\*\*\* CITY OF WICHITA SERVICE LINE. CONTRACTOR SHALL COORDINATE WITH EVERGY AND CITY OF WICHITA TO TEMPORARY TAKE LINE OUT OF SERVICE TO ALLOW CONSTRUCTION. AT LEAST 2 DAYS PRIOR TO START OF CONSTRUCTION, COORDINATE WITH EVERGY, MR. ZACH LAWS AT 261-6264.






PROFESSIONAL ENGINEERING CONSULTANTS  
 303 SOUTH TOPEKA  
 WICHITA, KS 67202  
 316-262-2691 www.pec1.com



CITY OF  
**WICHITA**



TREVOR KAUFMAN  
 LICENSED  
 26008  
 12/19/2019  
 KANSAS  
 PROFESSIONAL ENGINEER

**WATERLINE RELOCATION  
 AT  
 KELLOGG AND OSAGE STREET**

GARY JANZEN, P.E. - CITY ENGINEER  
 CITY OF WICHITA PROJECT NO. 448-2019-010176

JOB NO.	35-197042-009-042
DATE	AUGUST 2019
PM	RWG
DESIGNED BY	RWG
DRAWN BY	CSL
CHECKED BY	TBK
WATERLINE NO. 1	
<b>C104</b>	