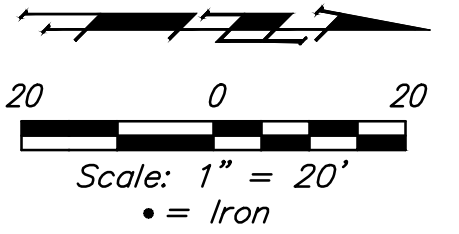


BENCHMARKS:
 BM#1: RR spike in high line pole, 40' west and 30' south of Lot 60, Block D, Firefly Way Addition.
 Elev. = 1399.54 NAVD88

BM#2: Benchmark disc in top of curb, adjacent to fire hydrant 15' south of SE corner of Lot 2, Block C, Firefly Way Addition.
 Elev. = 1396.95 NAVD88



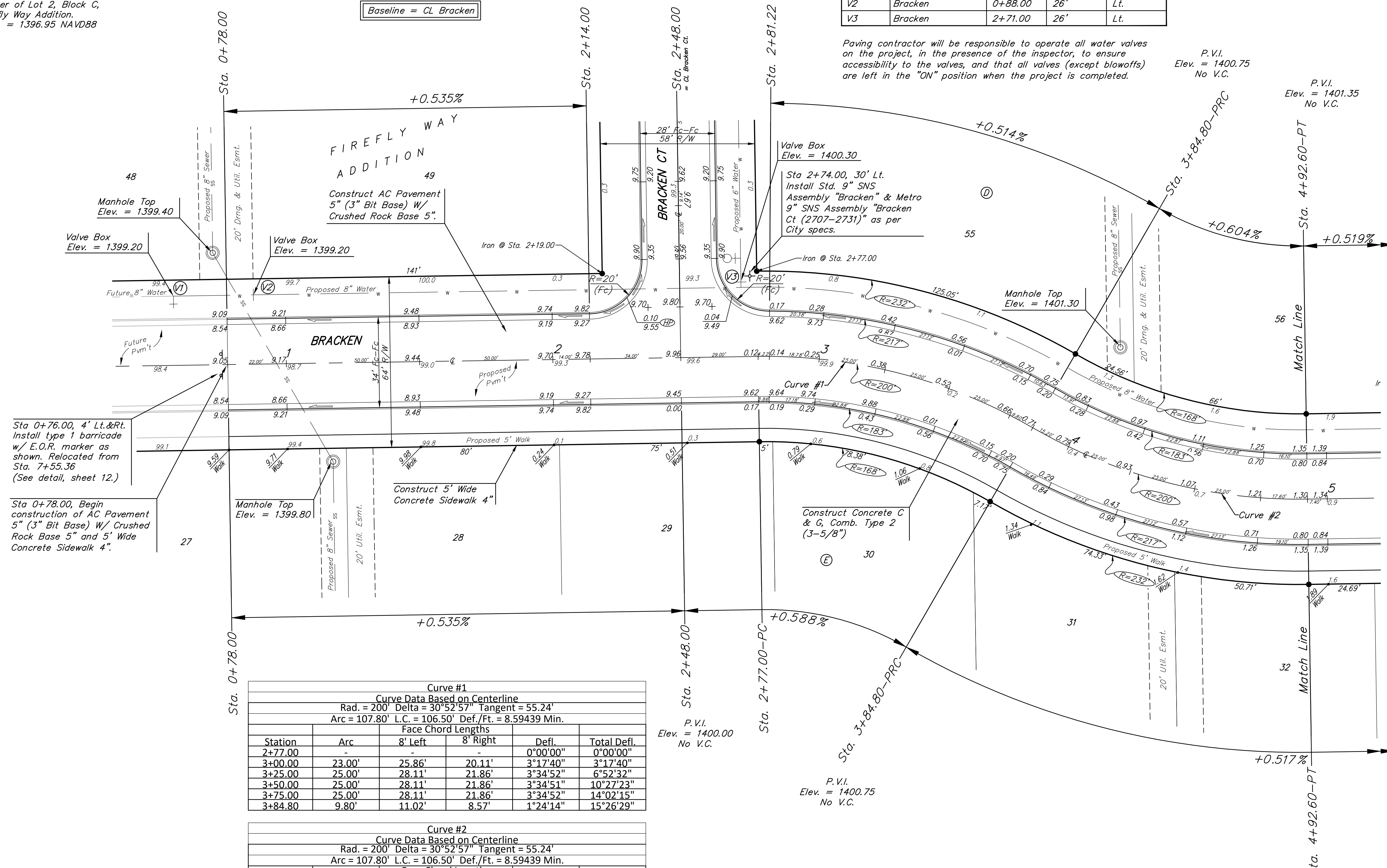
WATER VALVE LOCATION TABLE

VALVE NUMBER	STREET	BASELINE STATION	OFFSET DISTANCE	OFFSET DIRECTION
V1	Bracken	0+58.00	26'	Lt.
V2	Bracken	0+88.00	26'	Lt.
V3	Bracken	2+71.00	26'	Lt.

Paving contractor will be responsible to operate all water valves on the project, in the presence of the inspector, to ensure accessibility to the valves, and that all valves (except blowoffs) are left in the "ON" position when the project is completed.

P.V.I.
 Elev. = 1400.75
 No V.C.

P.V.I.
 Elev. = 1401.35
 No V.C.



Curve #1
 Curve Data Based on Centerline
 Rad. = 200' Delta = 30°52'57" Tangent = 55.24'
 Arc = 107.80' L.C. = 106.50' Def./Ft. = 8.59439 Min.

Station	Arc	Face Chord Lengths		Defl.	Total Defl.
		8' Left	8' Right		
2+77.00	-	-	-	0°00'00"	0°00'00"
3+00.00	23.00'	25.86'	20.11'	3°17'40"	3°17'40"
3+25.00	25.00'	28.11'	21.86'	3°34'52"	6°52'32"
3+50.00	25.00'	28.11'	21.86'	3°34'51"	10°27'23"
3+75.00	25.00'	28.11'	21.86'	3°34'52"	14°02'15"
3+84.80	9.80'	11.02'	8.57'	1°24'14"	15°26'29"

Curve #2
 Curve Data Based on Centerline
 Rad. = 200' Delta = 30°52'57" Tangent = 55.24'
 Arc = 107.80' L.C. = 106.50' Def./Ft. = 8.59439 Min.

Station	Arc	Face Chord Lengths		Defl.	Total Defl.
		8' Left	8' Right		
3+84.80	-	-	-	0°00'00"	0°00'00"
4+00.00	15.20'	13.30'	17.10'	2°10'38"	2°10'38"
4+25.00	25.00'	21.86'	28.11'	3°34'52"	5°45'30"
4+50.00	25.00'	21.86'	28.11'	3°34'51"	9°20'21"
4+75.00	25.00'	21.86'	28.11'	3°34'52"	12°55'13"
4+92.60	17.60'	15.40'	19.79'	2°31'16"	15°26'29"

NOTE: ROLL TYPE CURB & GUTTER (TYPE 2) TO BE CONSTRUCTED ON THE PAVEMENT SHOWN ON THIS SHEET. TOP OF CURB ELEVATIONS ARE GIVEN FOR FULL HEIGHT CURB (TYPE 4).