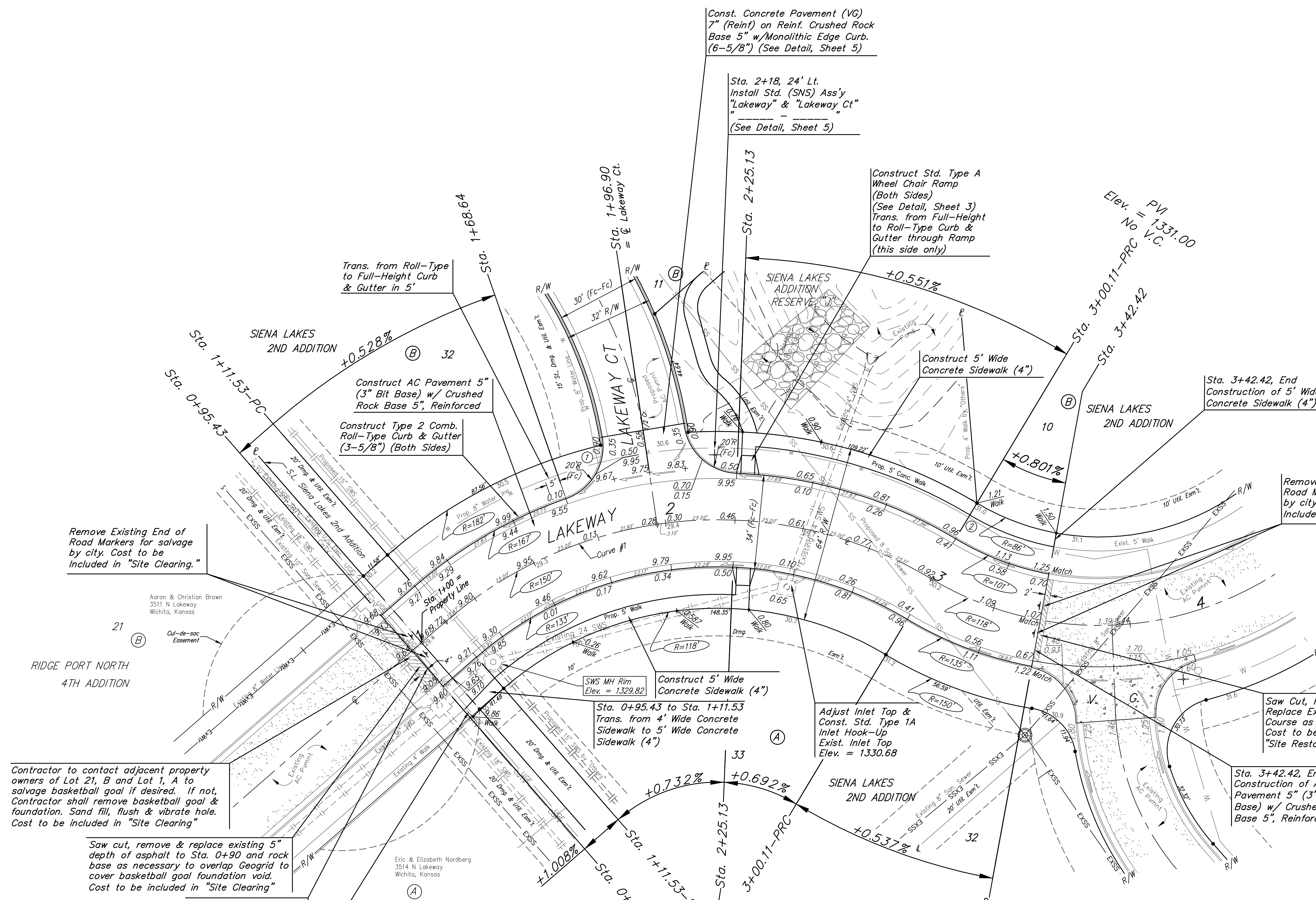
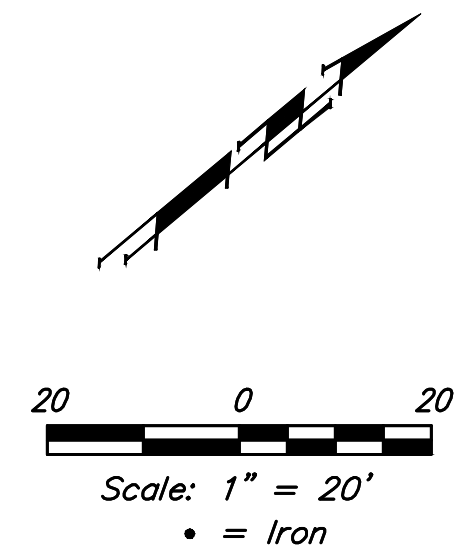


**BENCHMARKS:**  
 Chiseled square at the end of the top of curb at the southeast corner of Ridge Port and 37th ST N.  
 Elev. = 1333.05 NAVD88

Chiseled square on the south side of curb inlet on the east side of Lakeway ST  
 Elev. = 1329.58 NAVD88



Remove Existing End of Road Markers for salvage by city. Cost to be included in "Site Clearing."

Aaron & Christian Brown  
 3511 N Lakeway  
 Wichita, Kansas

RIDGE PORT NORTH  
 4TH ADDITION

Contractor to contact adjacent property owners of Lot 21, B and Lot 1, A to salvage basketball goal if desired. If not, Contractor shall remove basketball goal & foundation. Sand fill, flush & vibrate hole. Cost to be included in "Site Clearing"

Saw cut, remove & replace existing 5" depth of asphalt to Sta. 0+90 and rock base as necessary to overlap Geogrid to cover basketball goal foundation void. Cost to be included in "Site Clearing"

Curve #1  
 Curve Data Based on Centerline  
 Rad. = 328.97' Delta = 72°01'59" Tangent = 239.16'  
 Arc = 188.58' L.C. = 386.88' Def./Ft. = 11.45928 Min.

Station	Arc	Face Chord Lengths		Defl.	Total Defl.
		8' Left	8' Right		
1+11.53	-	-	-	0'00"00"	0'00"00"
1+25.00	13.47'	31.78'	27.29'	2'34"21"	2'34"21"
1+50.00	25.00'	58.93'	50.60'	4'46"29"	7'20"50"
1+68.64	18.64'	43.96'	37.75'	3'33"36"	10'54"26"
1+75.00	6.36'	15.01'	12.89'	1'12"53"	12'07"19"
2+00.00	25.00'	58.93'	50.60'	4'46"29"	16'53"48"
2+25.00	25.00'	58.93'	50.60'	4'46"29"	21'40"17"
2+25.13	0.13'	0.31'	0.26'	0'01"29"	21'41"46"
2+50.00	24.87'	58.62'	50.34'	4'45"00"	26'26"46"
2+75.00	25.00'	58.93'	50.60'	4'46"29"	31'13"15"
3+00.00	25.00'	58.93'	50.60'	4'46"29"	35'59"44"
3+00.11	0.11'	0.26'	0.22'	0'01"16"	36'01"00"

VALVE NUMBER	STREET	BASILINE STATION	OFFSET DISTANCE	OFFSET DIRECTION
1	Lakeway	1+81.67	28'	Lt.
2	Lakeway	3+00.11	26'	Lt.

Const. Concrete Pavement (VG)  
 7" (Reinf.) on Reinf. Crushed Rock Base 5" w/Monolithic Edge Curb. (6-5/8") (See Detail, Sheet 5)

Sta. 2+18, 24' Lt.  
 Install Std. (SNS) Ass'y "Lakeway" & "Lakeway Ct"  
 (See Detail, Sheet 5)

Construct Std. Type A Wheel Chair Ramp (Both Sides)  
 (See Detail, Sheet 3)  
 Trans. from Full-Height to Roll-Type Curb & Gutter through Ramp (this side only)

Elev. = 1331.00  
 PVI No. = 1331.00  
 V.C.

Remove Existing End of Road Markers for salvage by city. Cost to be included in "Site Clearing."

Saw Cut, Remove & Replace Existing Surface Course as Indicated. Cost to be included in "Site Restoration"

Sta. 3+42.42, End Construction of AC Pavement 5" (3" Bit Base) w/ Crushed Rock Base 5", Reinforced

Roll type curb & gutter to be constructed on the pavement on this sheet.  
 Top of curb elevation are given for full height curb.

Curve #2  
 Curve Data Based on Centerline  
 Rad. = 118' Delta = 20'32'35" Tangent = 21.38'  
 Arc = 42.31' L.C. = 42.08' Def./Ft. = 14.56610 Min.

Station	Arc	Face Chord Lengths		Defl.	Total Defl.
		8' Left	8' Right		
3+00.11	-	-	-	0'00"00"	0'00"00"
3+25.00	24.89'	19.58'	30.11'	6'02"33"	6'02"33"
3+42.42	17.42'	13.72'	21.09'	4'13"44"	10'16"17"

**Baughman** Siena Lakes 2nd Addition - Phase III  
**LAKEWAY**  
 Sta. 0+95.43 to Sta. 3+00.11

Baughman Company, P.A. 315 Ellis St. Wichita, KS 67211 P 316-262-7271 F 316-262-0149  
 ENGINEERING | SURVEYING | PLANNING | LANDSCAPE ARCHITECTURE

PROJECT NUMBER: 472-85422  
 DESIGN: AEG DRAWN: JAK  
 APPROVED: DATE: 2/03/2020  
 REVISIONS:  
 SCALE: Noted  
 SHEET: 7 OF 29

E:\Projects\Siena Lakes 2nd\_1805P177\Engineering\Phase 3\Str\_1904E259\STR PLANS.dwg