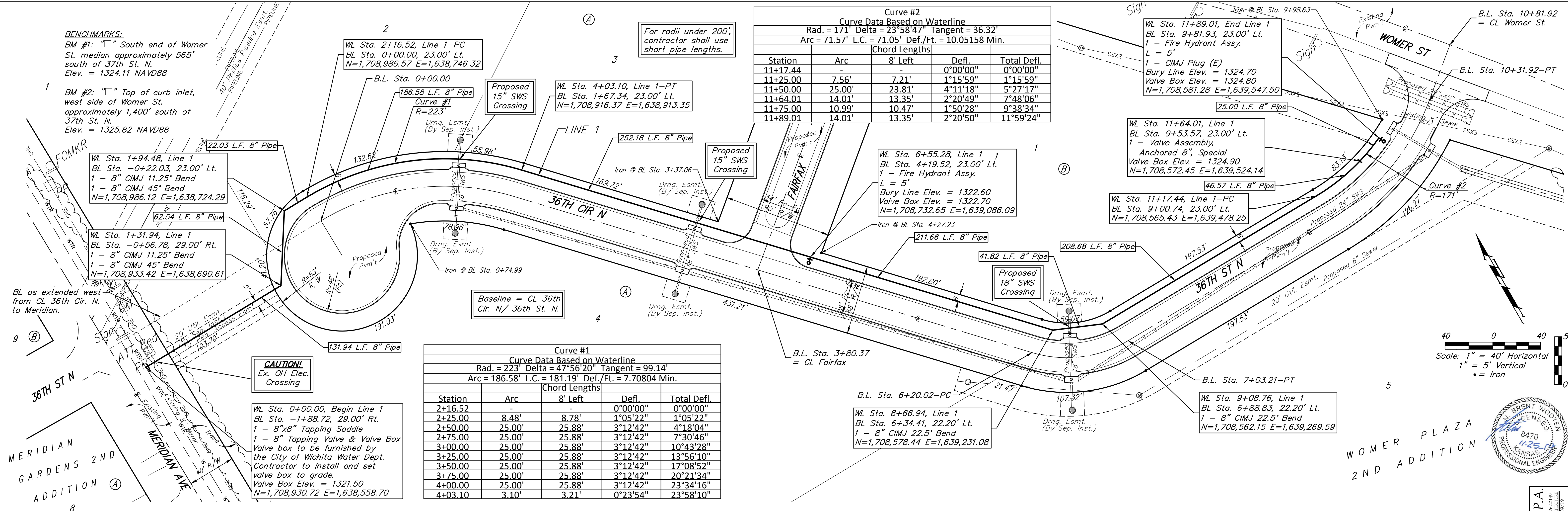


BENCHMARKS:
 BM #1: "□" South end of Womer St. median approximately 565' south of 37th St. N.
 Elev. = 1324.11 NAVD88

BM #2: "□" Top of curb inlet, west side of Womer St. approximately 1,400' south of 37th St. N.
 Elev. = 1325.82 NAVD88

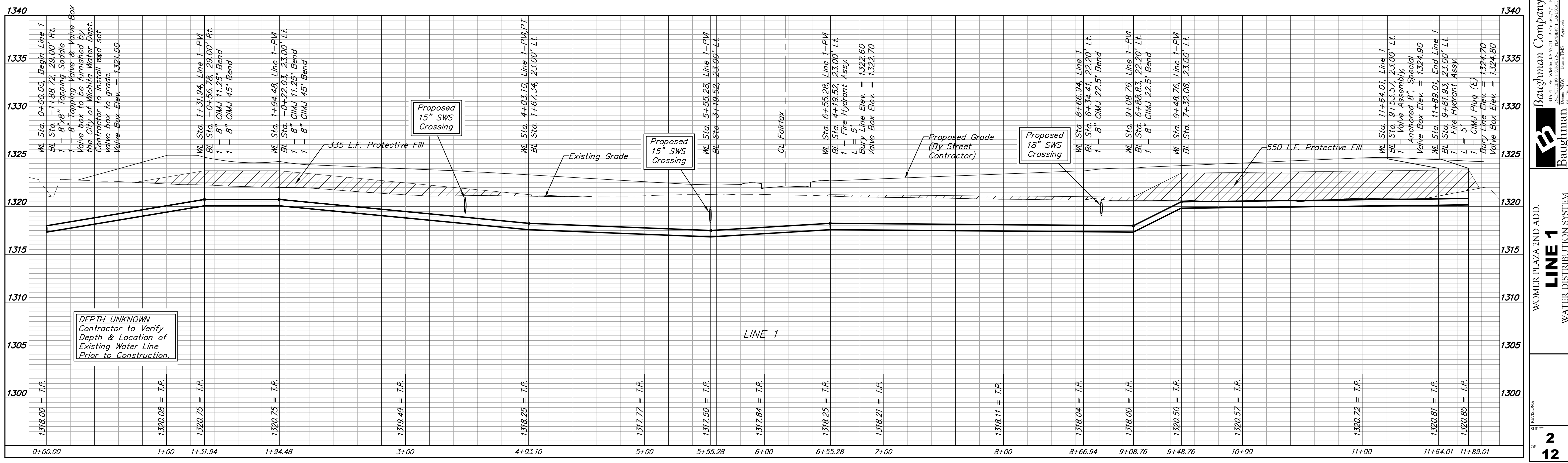


Curve #2
 Curve Data Based on Waterline
 Rad. = 171' Delta = 23°58'47" Tangent = 36.32'
 Arc = 71.57' L.C. = 71.05' Def./Ft. = 10.05158 Min.

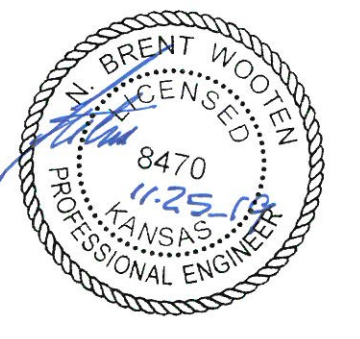
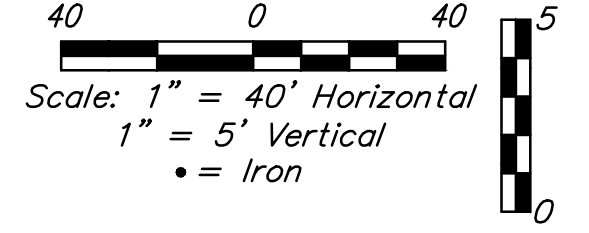
Station	Arc	8' Left	Defl.	Total Defl.
11+17.44	-	-	0°00'00"	0°00'00"
11+25.00	7.56'	7.21'	1°15'59"	1°15'59"
11+50.00	25.00'	23.81'	4°11'18"	5°27'17"
11+64.01	14.01'	13.35'	2°20'49"	7°48'06"
11+75.00	10.99'	10.47'	1°50'28"	9°38'34"
11+89.01	14.01'	13.35'	2°20'50"	11°59'24"

Curve #1
 Curve Data Based on Waterline
 Rad. = 223' Delta = 47°56'20" Tangent = 99.14'
 Arc = 186.58' L.C. = 181.19' Def./Ft. = 7.70804 Min.

Station	Arc	8' Left	Defl.	Total Defl.
2+16.52	-	-	0°00'00"	0°00'00"
2+25.00	8.48'	8.78'	1°05'22"	1°05'22"
2+50.00	25.00'	25.88'	3°12'42"	4°18'04"
2+75.00	25.00'	25.88'	3°12'42"	7°30'46"
3+00.00	25.00'	25.88'	3°12'42"	10°43'28"
3+25.00	25.00'	25.88'	3°12'42"	13°56'10"
3+50.00	25.00'	25.88'	3°12'42"	17°08'52"
3+75.00	25.00'	25.88'	3°12'42"	20°21'34"
4+00.00	25.00'	25.88'	3°12'42"	23°34'16"
4+03.10	3.10'	3.21'	0°23'54"	23°58'10"



DEPTH UNKNOWN
 Contractor to Verify Depth & Location of Existing Water Line Prior to Construction.



Baughman Company, P.A.
 1515 W. 10th St., Suite 200, Wichita, KS 67202
 (316) 261-1111
 www.baughmanpa.com

WOMER PLAZA 2ND ADD.
LINE 1
 WATER DISTRIBUTION SYSTEM