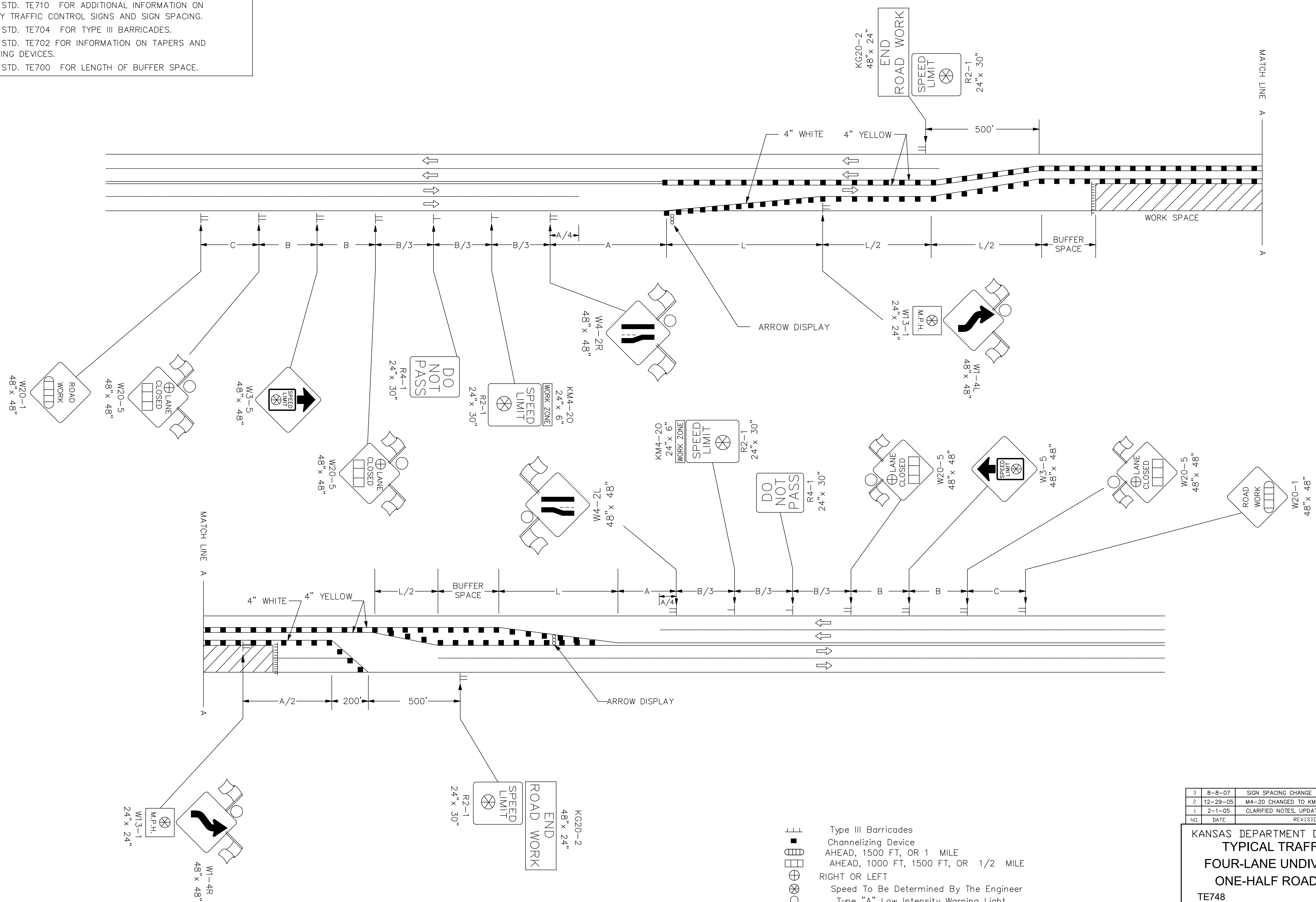


REFER TO STD. TE710 FOR ADDITIONAL INFORMATION ON TEMPORARY TRAFFIC CONTROL SIGNS AND SIGN SPACING.
 REFER TO STD. TE704 FOR TYPE III BARRICADES.
 REFER TO STD. TE702 FOR INFORMATION ON TAPERS AND CHANNELIZING DEVICES.
 REFER TO STD. TE700 FOR LENGTH OF BUFFER SPACE.



- Type III Barricades
- Channelizing Device
- AHEAD, 1500 FT, OR 1 MILE
- AHEAD, 1000 FT, 1500 FT, OR 1/2 MILE
- RIGHT OR LEFT
- Speed To Be Determined By The Engineer
- Type "A" Low Intensity Warning Light

| | | | | |
|-----|----------|--|------|--------|
| 3 | 8-8-07 | SIGN SPACING CHANGE | M.B. | A.A.A. |
| 2 | 12-29-05 | M4-20 CHANGED TO KM4-20 | M.B. | A.A.A. |
| 1 | 2-1-05 | CLARIFIED NOTES, UPDATED WARNING SIGNS | B.H. | A.A.A. |
| NO. | DATE | REVISION | BY | APP'D |

KANSAS DEPARTMENT OF TRANSPORTATION
TYPICAL TRAFFIC CONTROL
FOUR-LANE UNDIVIDED HIGHWAY
ONE-HALF ROADWAY CLOSED
TE748

| | | | |
|---------------|------------|------------|----------------------|
| FHWA APPROVAL | 8-8-07 | APP'D | Anthony A. Alrobaire |
| DESIGNED | BAH | QUANTITIES | TRACED |
| DESIGN CK. | DETAIL CK. | QUAN. CK. | TRACE CK. |