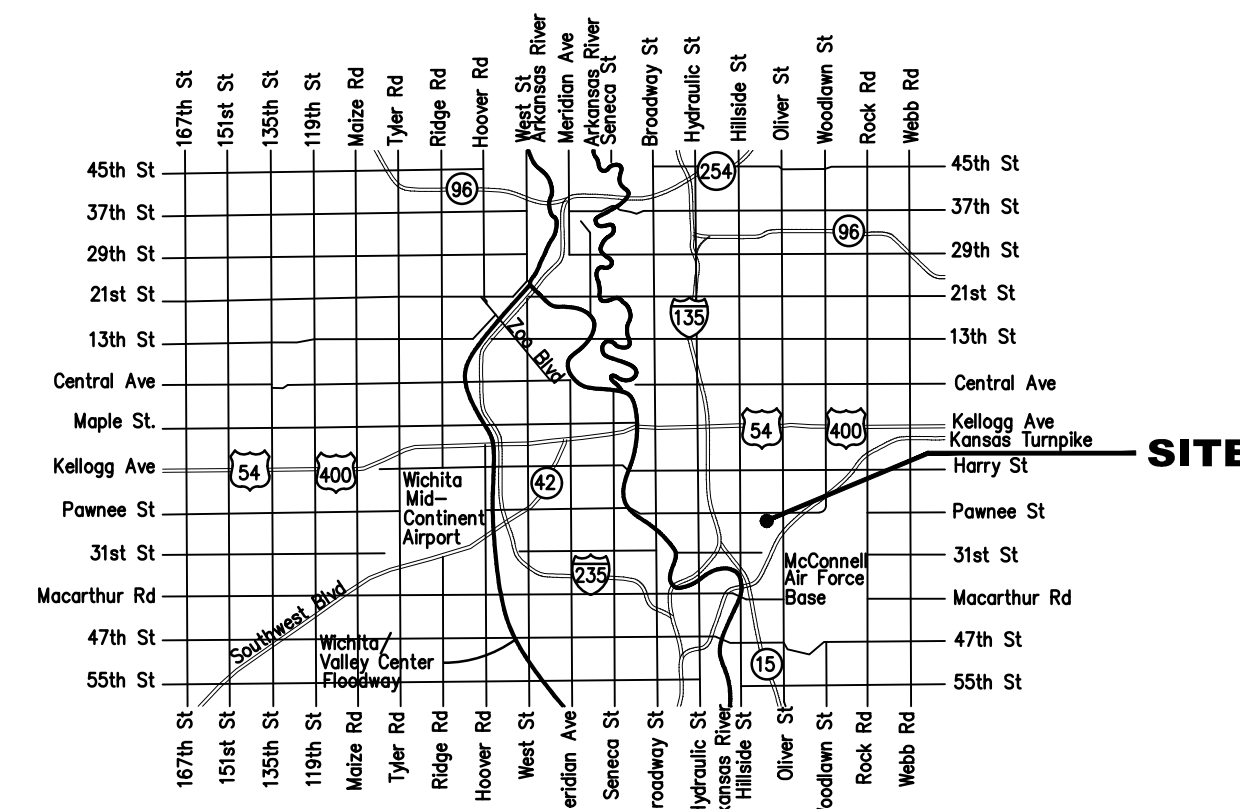


Sanitary Sewer Improvements to serve the **4100 BLOCK OF EAST CESSNA** CITY OF WICHITA, KANSAS

Gary Janzen, P.E. City Engineer
Project Number
468-85390
OCA Number
628129

SHEET INDEX

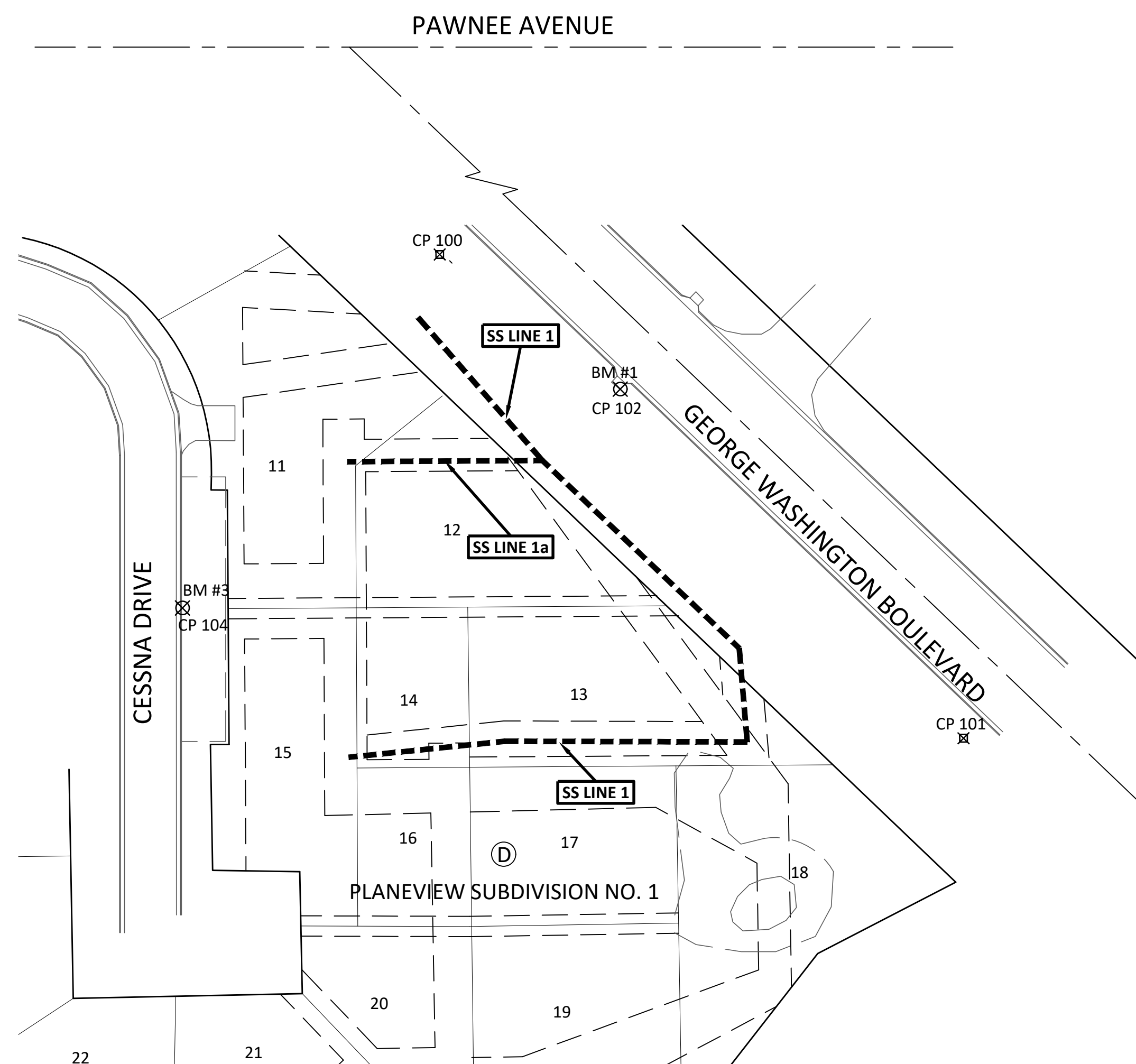
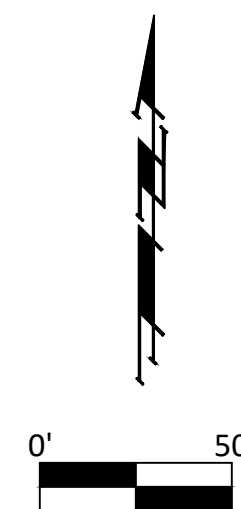
1	Title Sheet
2	General Notepage
3-4	SS Line 1 Plan/Profile
5	SS Line 1a Plan/Profile
6-8	Standard Details
9-13	Erosion Control Details



VICINITY MAP

CONTROL POINTS

- CP 100 - #4 Rebar with Yellow Cap
N-1672066.57
E-1663579.55
- CP 101 - #4 Rebar with Yellow Cap
N-1672304.91
E-1663321.51
- CP 102 - Chiseled "+" Cut on Inlet Top
N-1672238.58
E-1663410.45
- CP 103 - Chiseled "+" Cut on Top of Wingwall
N-1671965.80
E-1663687.55
- CP 104 - Chiseled Crows Foot Cut on Top of Curb
N-1672130.75
E-1663194.79



BENCHMARKS

- BM #1 - Chiseled "+" on the Southwest Corner of the Inlet on the Southerly side of George Washington Boulevard Across from the South Drive to the Save A Lot Food Store.
Elev. = 1301.99 (NAVD 88)
- BM #2 - Chiseled "+" Cut on Top of the Northwesterly Wingwall of the Bridge over Gypsum Creek at George Washington Boulevard.
Elev. = 1304.27 (NAVD 88)
- BM #3 - Chiseled Crows Foot Cut on Top of Curb on the East Side of Cessna Street at the Centerline of the Sidewalk Between Lots 11 and 15.
Elev. = 1302.75 (NAVD 88)



FEBRUARY 2020