

**BENCHMARKS:**  
 135th St. W. & 13th St. N. - City of Wichita Disc at Southwest Corner of Intersection, 30.00'± S. of C of 13th St. N. 35.00'± W. of C of 135th St. W.  
 Elev. = 1355.65 MSL

"□" Cut in Top of Curb 10' South of end of Existing Pavement, East Curb adjacent to Lot 12, Block D, Copper Gate North Addition.  
 Elev. = 1362.13 MSL

BM Disc in top Curb Adjacent to Fire Hydrant at E. End of N. Curb Return of Kiwi & Decker, adjacent to Lot 16, Block D, Copper Gate North Addition.  
 Elev. = 1361.04 MSL

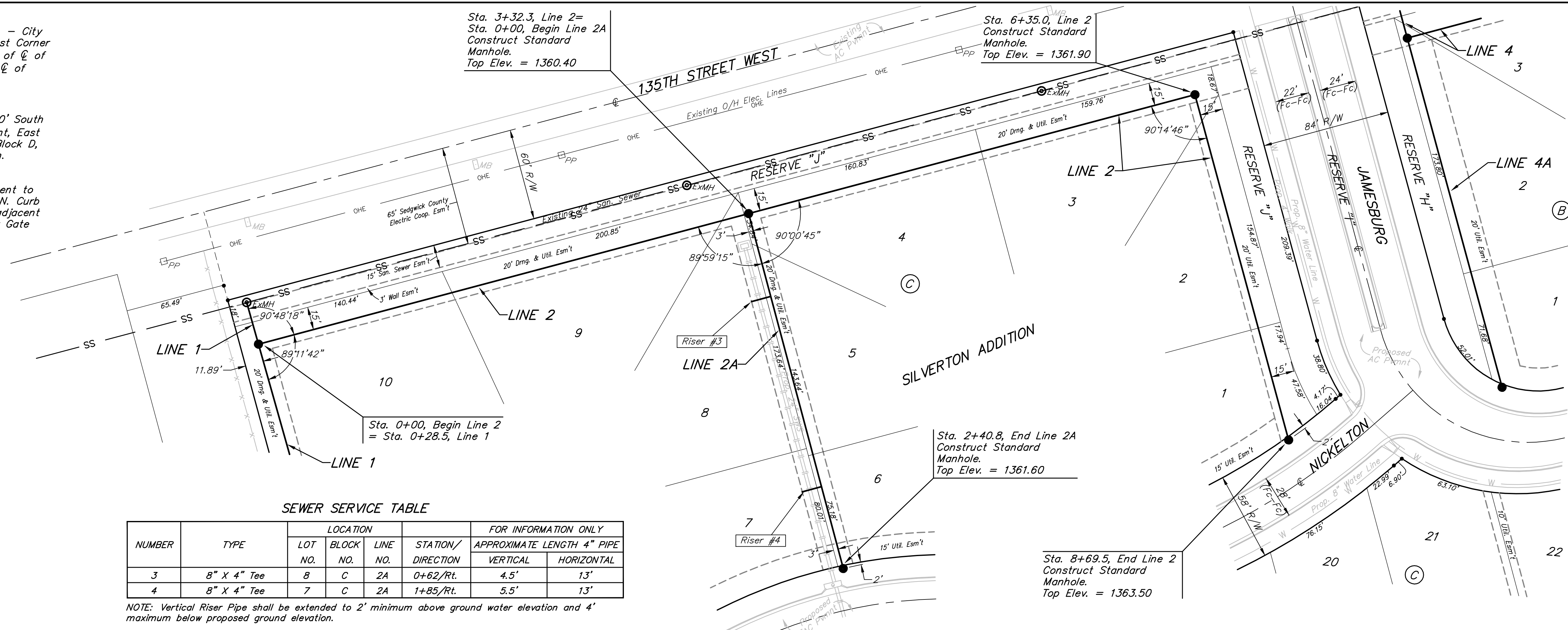
Sta. 3+32.3, Line 2 =  
 Sta. 0+00, Begin Line 2A  
 Construct Standard Manhole.  
 Top Elev. = 1360.40

Sta. 6+35.0, Line 2  
 Construct Standard Manhole.  
 Top Elev. = 1361.90

Sta. 2+40.8, End Line 2A  
 Construct Standard Manhole.  
 Top Elev. = 1361.60

Sta. 8+69.5, End Line 2  
 Construct Standard Manhole.  
 Top Elev. = 1363.50

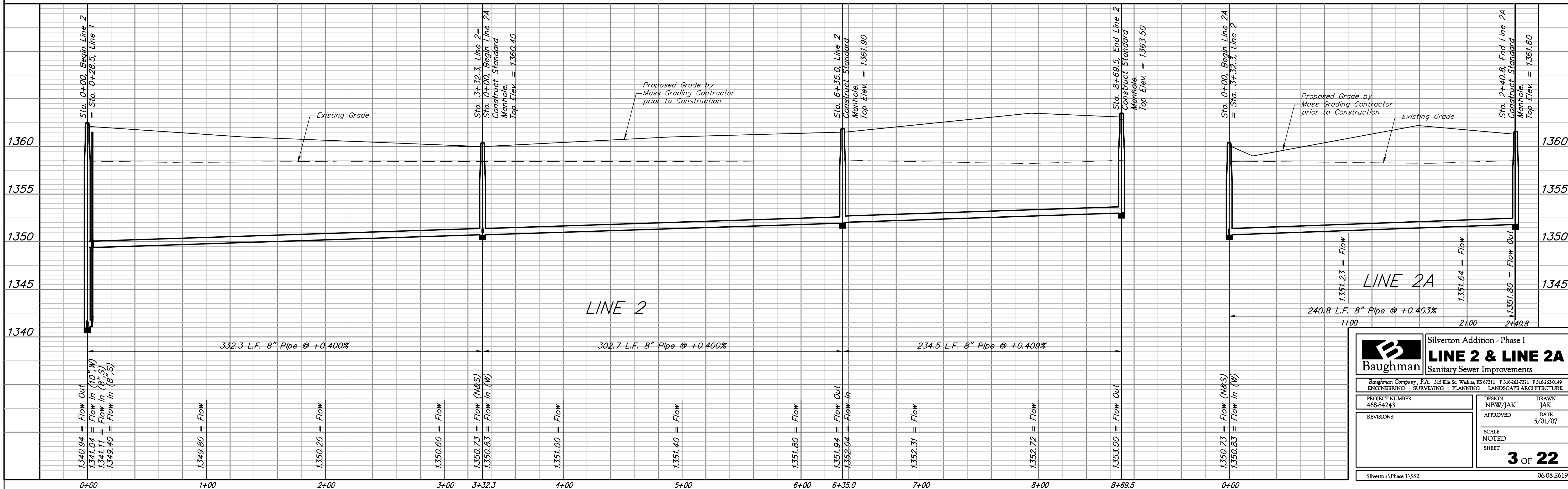
SCALE:  
 1" = 40' HORIZONTAL  
 1" = 5' VERTICAL  
 • = IRON



SEWER SERVICE TABLE

NUMBER	TYPE	LOCATION			STATION/DIRECTION	FOR INFORMATION ONLY	
		LOT NO.	BLOCK NO.	LINE NO.		APPROXIMATE LENGTH 4" PIPE	VERTICAL
3	8" X 4" Tee	8	C	2A	0+62/Rt.	4.5'	13'
4	8" X 4" Tee	7	C	2A	1+85/Rt.	5.5'	13'

NOTE: Vertical Riser Pipe shall be extended to 2' minimum above ground water elevation and 4' maximum below proposed ground elevation.



**Baughman** Silvertown Addition - Phase I  
**LINE 2 & LINE 2A**  
 Sanitary Sewer Improvements

PROJECT NUMBER: 468-84243  
 DESIGN: NBW/JAK  
 DRAWN: JAK  
 APPROVED: DATE 5/01/07  
 SCALE: NOTED  
 SHEET: **3 OF 22**

Silvertown Phase I\SS2 06-08-E619