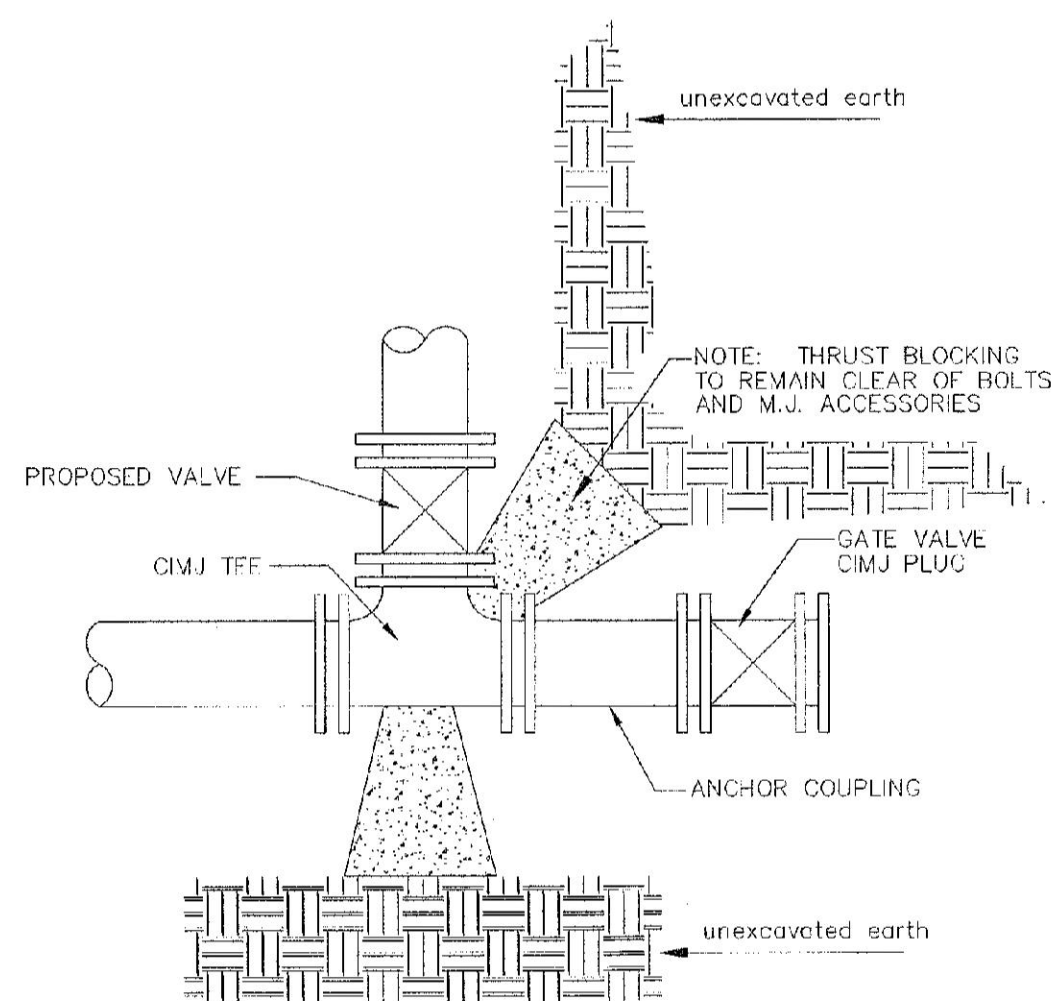


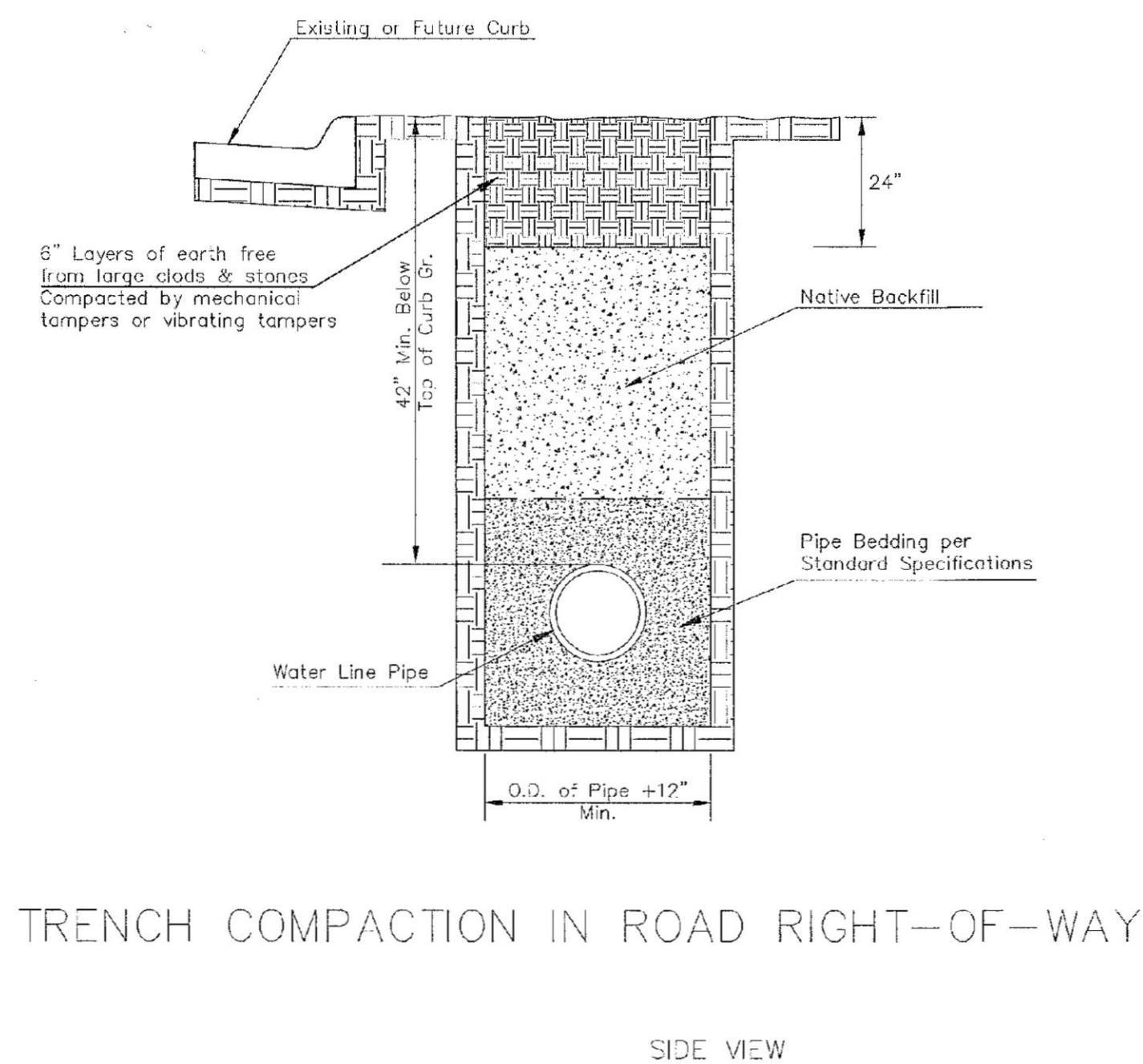
PIPE SIZE	THRUST AT FITTINGS IN TONS-AT 150#/IN ² P					
	PLUG	90°	45°	22 1/2°	11 1/4°	TEE
6"	2.8	3.95	2.15	1.09	.55	2.8
8"	4.9	6.95	3.75	1.90	.96	4.9
12"	11.4	16.1	8.75	4.45	2.25	11.4
16"	20.15	28.5	15.4	7.85	3.95	20.15
20"	31.15	44.0	23.85	12.15	6.10	31.15
24"	44.55	63.0	34.1	17.4	8.75	44.55

TYPICAL THRUST BLOCKS

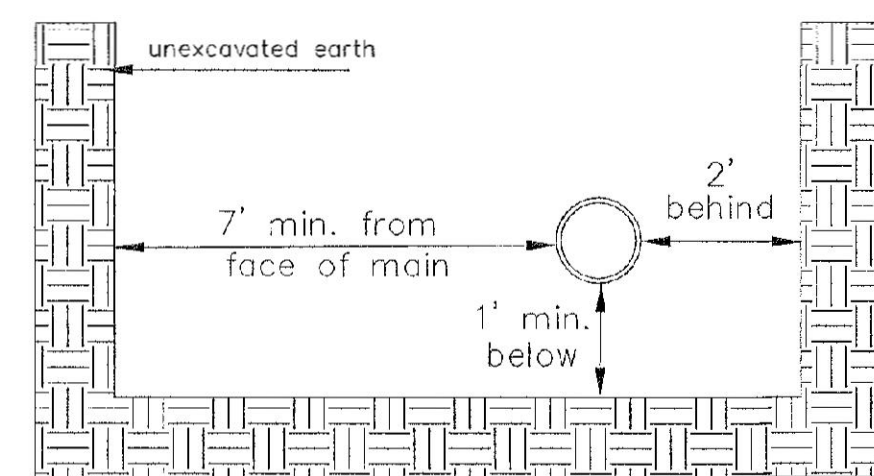


KEY BLOCK DETAIL

* PLANS GOVERN
UNLESS OTHERWISE NOTED ON PLANS

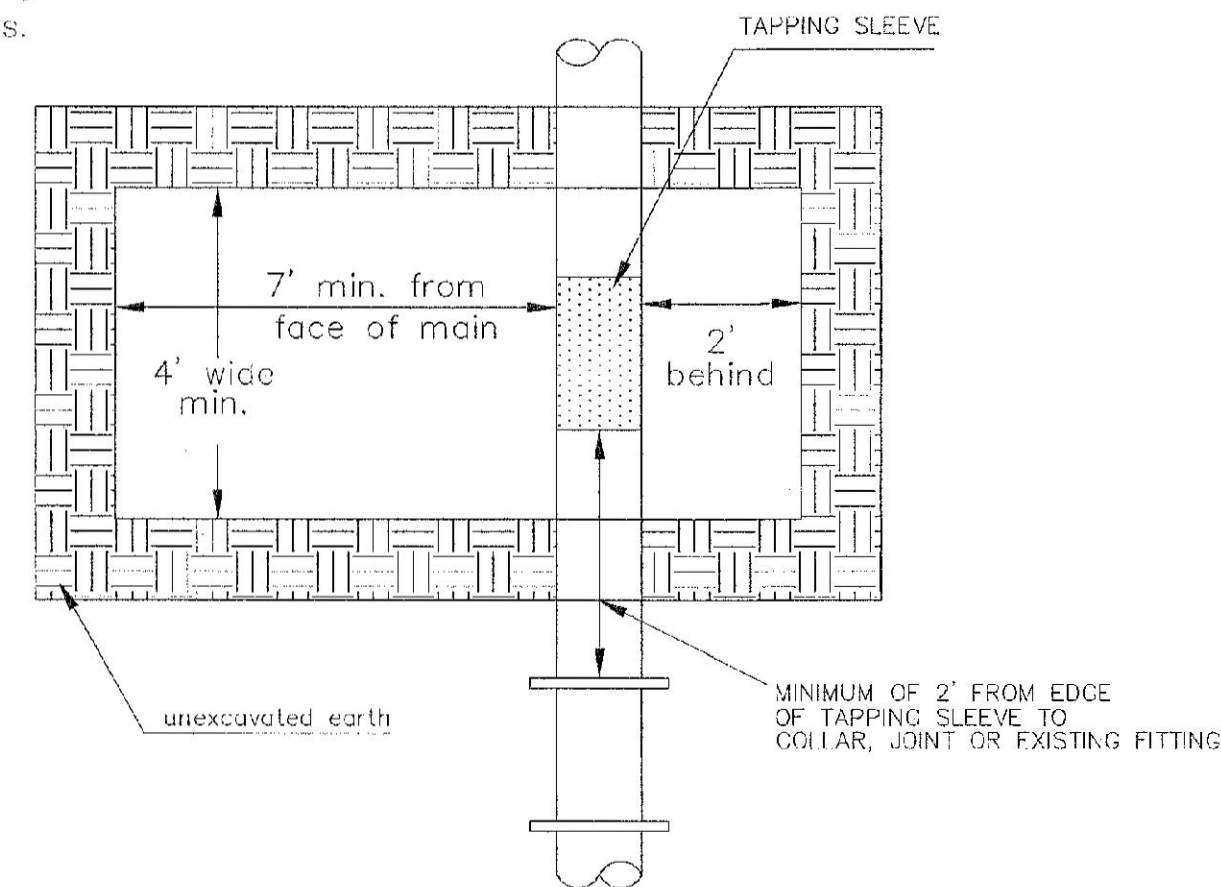


TRENCH COMPACTION IN ROAD RIGHT-OF-WAY

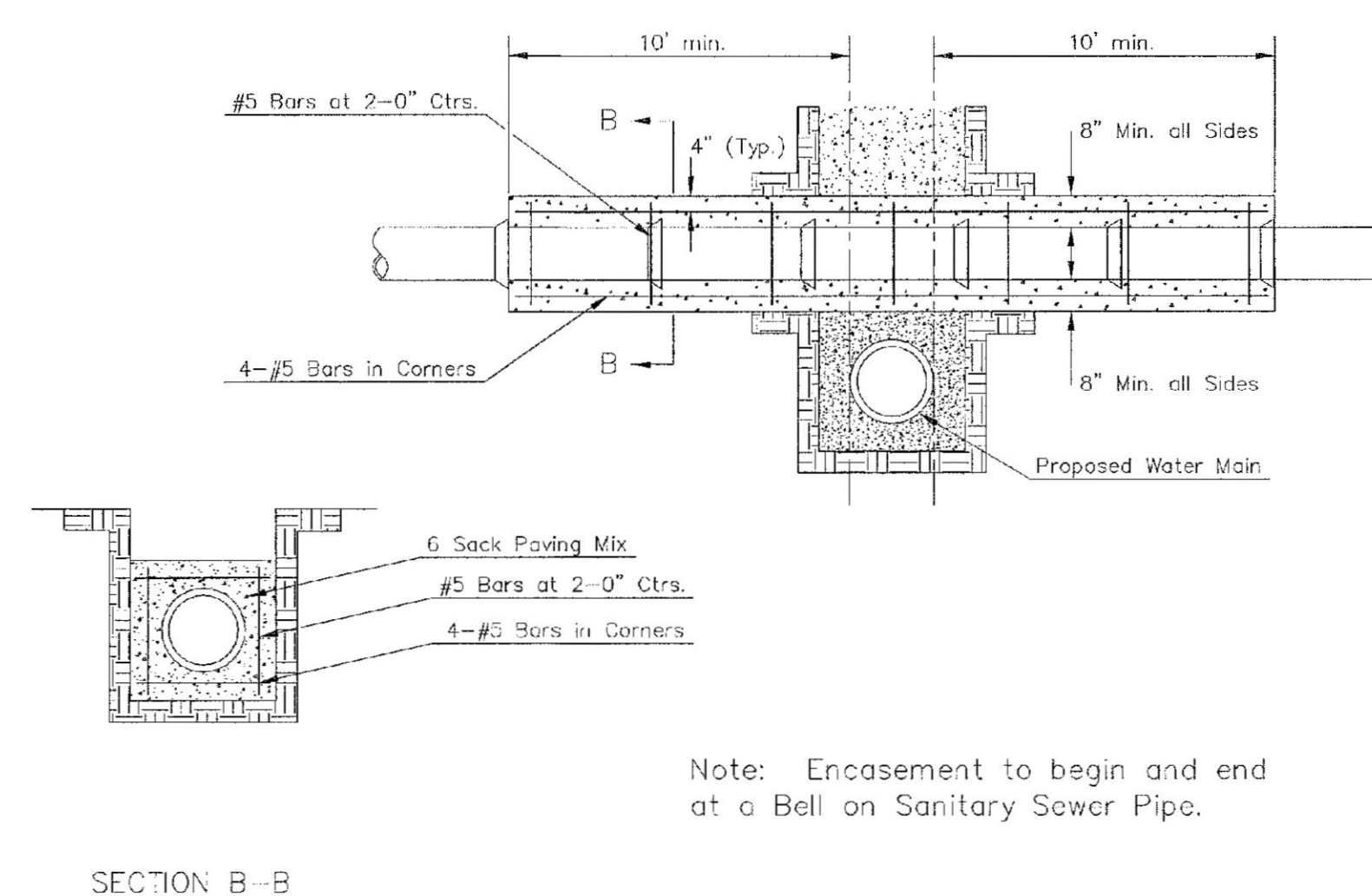


Note: When shoring is required it is to be per The City of Wichita Standard Specifications.

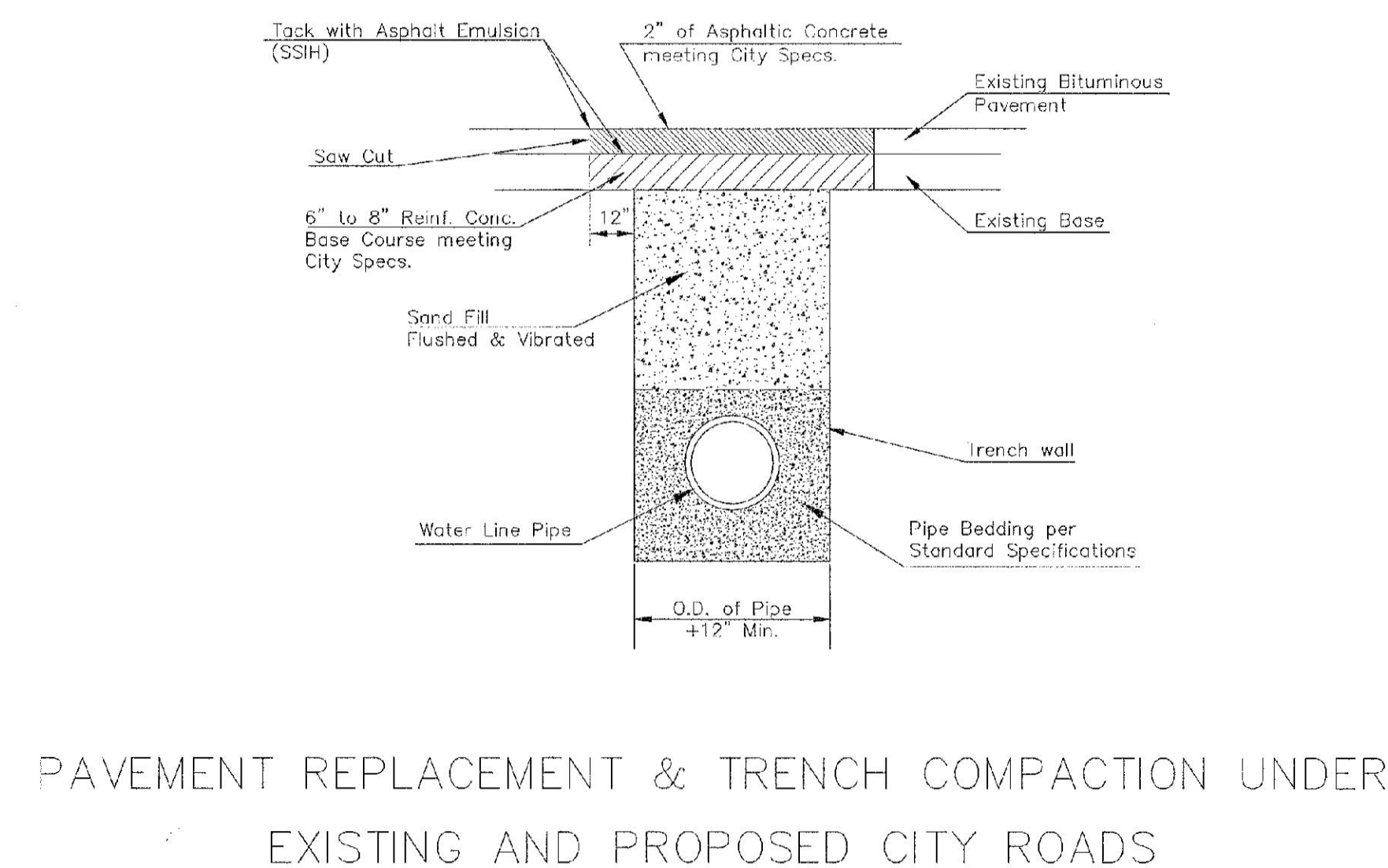
TOP VIEW



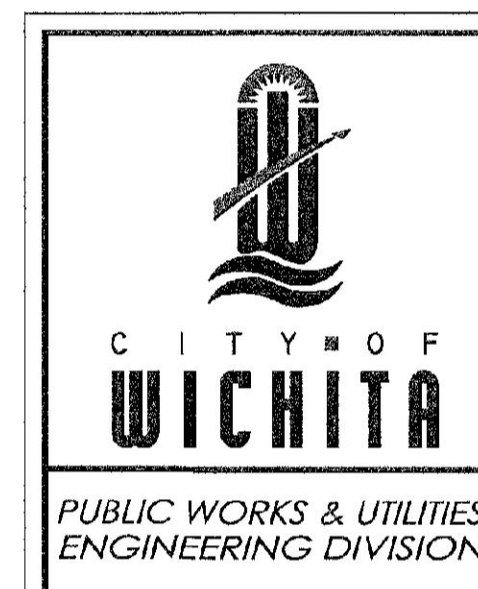
EXCAVATION FOR WET TAP



REINFORCED CONCRETE ENCASEMENT OF SANITARY SEWER

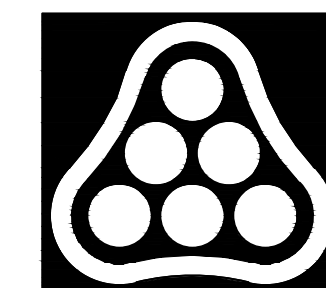


PAVEMENT REPLACEMENT & TRENCH COMPACTION UNDER EXISTING AND PROPOSED CITY ROADS

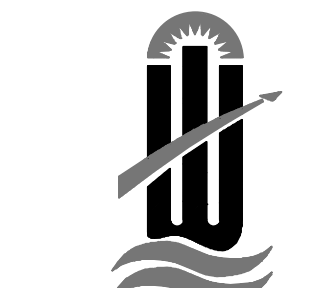


MISCELLANEOUS WATER DETAILS		
CITY ENGINEER GARY JANZEN, P.E.		
PROJECT NUMBER 448-90429	OCA NUMBER 735657	DATE
CITY ENGINEER'S OFFICE CITY HALL - SEVENTH FLOOR 455 NORTH MAIN STREET WICHITA, KANSAS 67202-1620 (316) 268-4301		SHEET

WL-104



PEC
PROFESSIONAL ENGINEERING CONSULTANTS
303 SOUTH TOPEKA
WICHITA, KS 67202
316-262-2691 www.pec1.com



CITY OF WICHITA

WATERLINE IMPROVEMENTS
TO SERVE

FONTANA 5TH - PHASE 2

GARY JANZEN, P.E., CITY ENGINEER
CITY OF WICHITA, PROJECT NO. 448-90429
OCA NO. 735657

Issue:		
JOB NO.	35-190592-003-042	
DATE	FEBRUARY 2020	
PM	TBK	
DESIGNED BY	TBK	
DRAWN BY	KTD	
CHECKED BY	RWG	

MISCELLANEOUS WATER DETAILS

CU502