

N: 26926.0428, E: 14981.5042
 WL 2, Sta. 0+00.00=
 Pine Grove Cir., Sta. 299+68.06, 23' R
 Existing 8" Plug *
 Remove 8" Plug from existing
 pipe and begin new water main
 installation.
 1- 8" 22 1/2° Bend
 Defl. = 18'45"46"

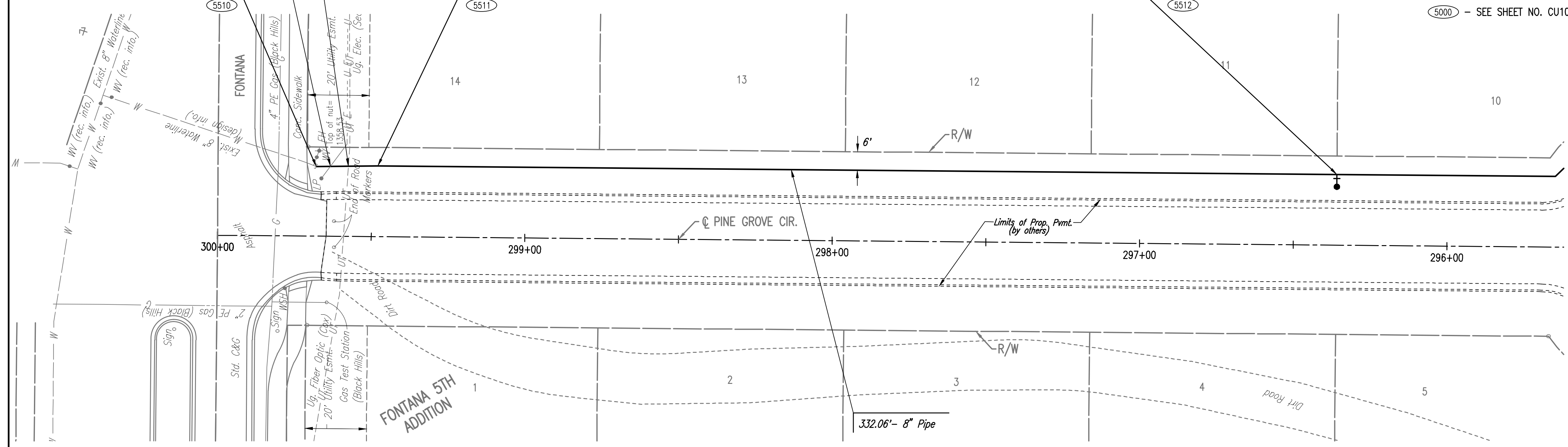
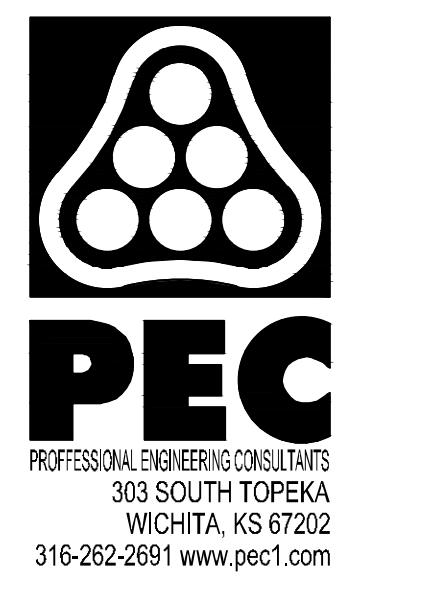
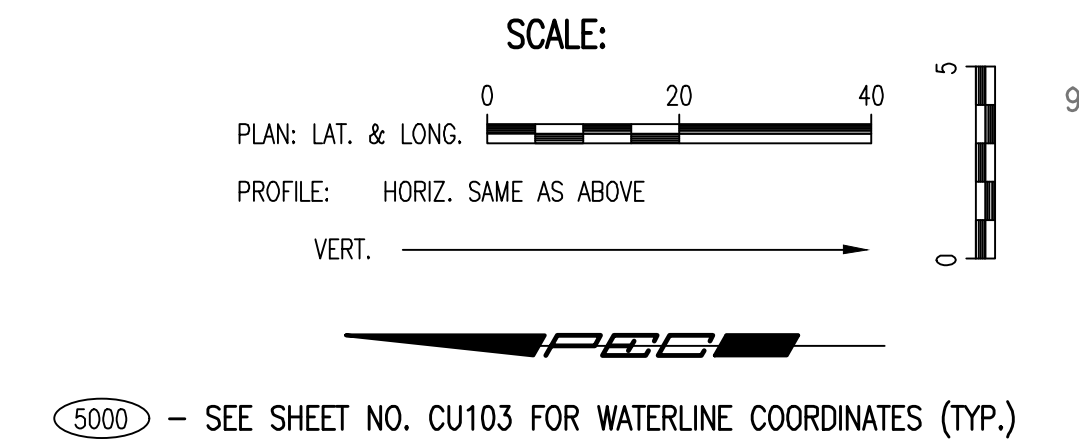
CAUTION !!!
 Buried Electric
 (Sedgwick Co. Elec.)

CAUTION!!!
 Buried Fiber Optic Line
 (Cox)

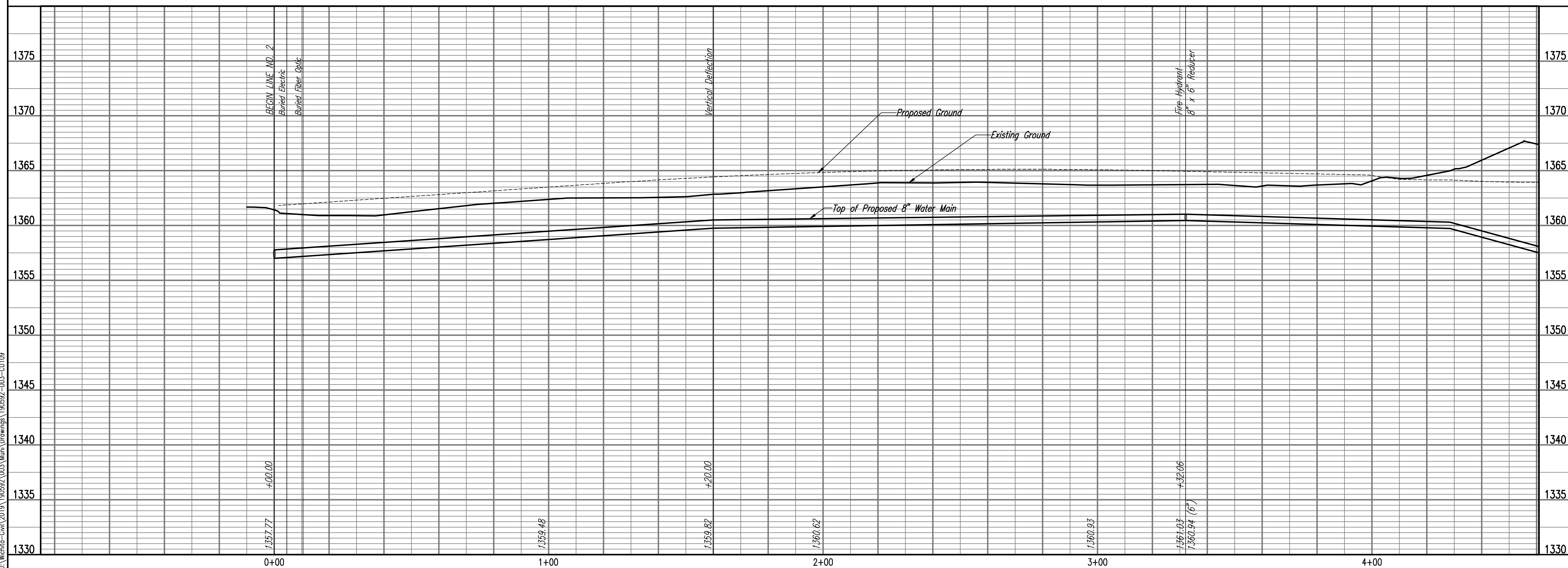
N: 26906.0407, E: 14981.6563
 WL 2, Sta. 0+20.00=
 Pine Grove Cir., Sta. 299+48.06, 23' R
 Horizontal Deflection
 Defl. = 0'56"26"

* PRIOR TO BEGINNING CONSTRUCTION, THE CONTRACTOR SHALL EXCAVATE THE EXISTING 8" WATERLINE AT STATION 0+00.00 TO VERIFY PIPE SIZE, TYPE, FITTINGS, AND HORIZONTAL AND VERTICAL LOCATION. THE CONTRACTOR SHALL REPORT HIS FINDINGS TO THE ENGINEER SO THAT ANY NECESSARY PLAN MODIFICATIONS CAN BE MADE. ANY ADDITIONAL LABOR OR MATERIALS NECESSARY TO COMPLETE THE CONNECTION SHALL BE CONSIDERED SUBSIDIARY TO THE PROJECT.

N: 26593.9978, E: 14978.9053
 WL 2, Sta. 3+32.06=
 Pine Grove Cir., Sta. 296+36.00, 23' R
 1- Fire Hydrant Assembly
 L = 4'
 Top Valve Box El. = 1364.91
 FH Bury Line El. = 1364.86
 1- 8" x 6" Reducer (S)
 Match Point



WATERLINE NO. 2



Saved: 02-17-2020 1:03:18 PM by: KURTIS DEWAT
 Project: 35-190592-003-Waterline Improvements
 U:\Wichita-Civil\2019\190592-003\Main Drawings\190592-003-CU109

WATERLINE IMPROVEMENTS
 TO SERVE

FONTANA 5TH - PHASE 2

GARY LANZEN, P.E., CITY ENGINEER
 CITY OF WICHITA, PROJECT NO. 448-90429
 OCA NO. 736667

Issue:	
JOB NO.	35-190592-003-042
DATE	FEBRUARY 2020
PM	TBK
DESIGNED BY	TBK
DRAWN BY	KTD
CHECKED BY	RWG

WATERLINE NO. 2

CU109