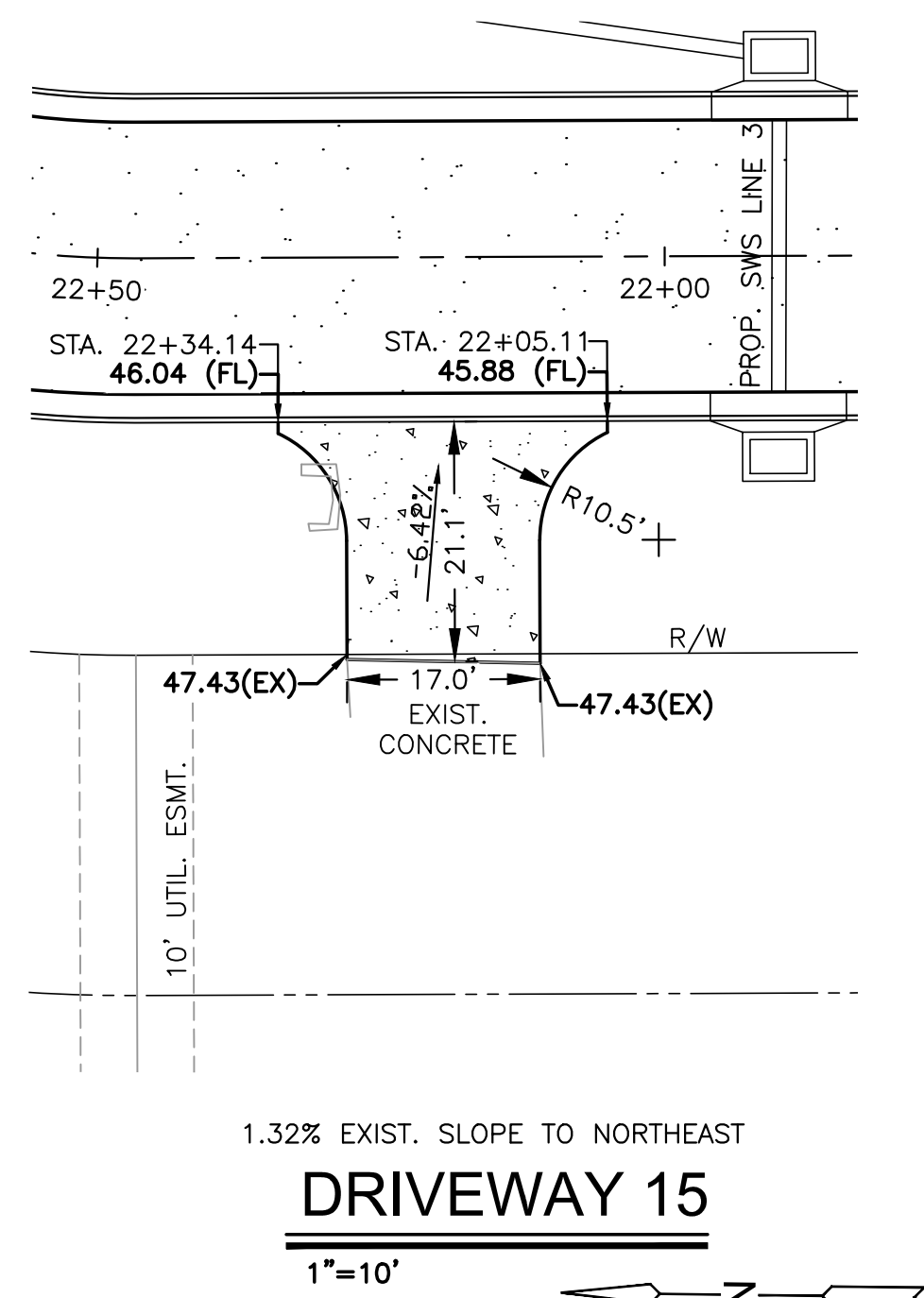
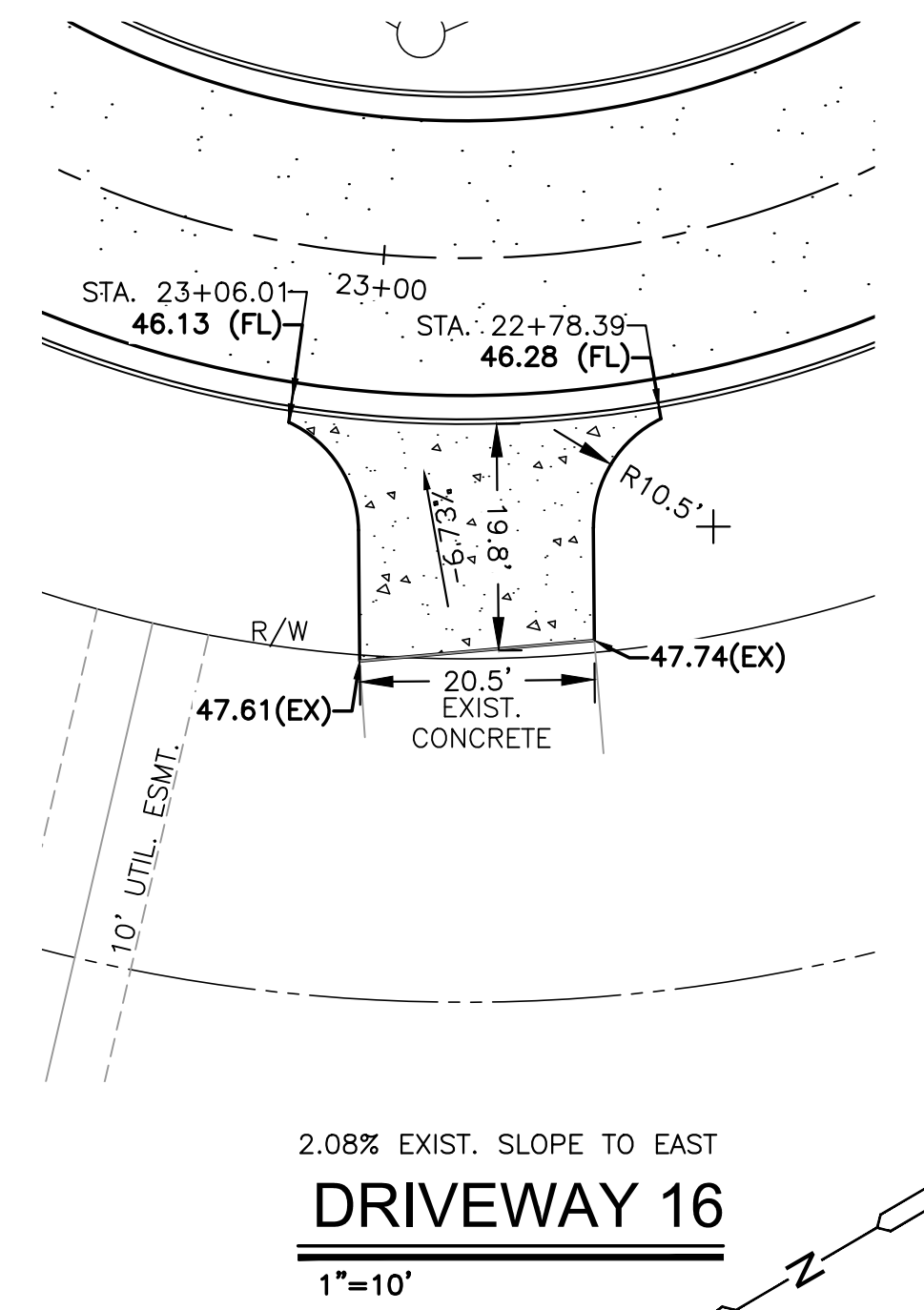


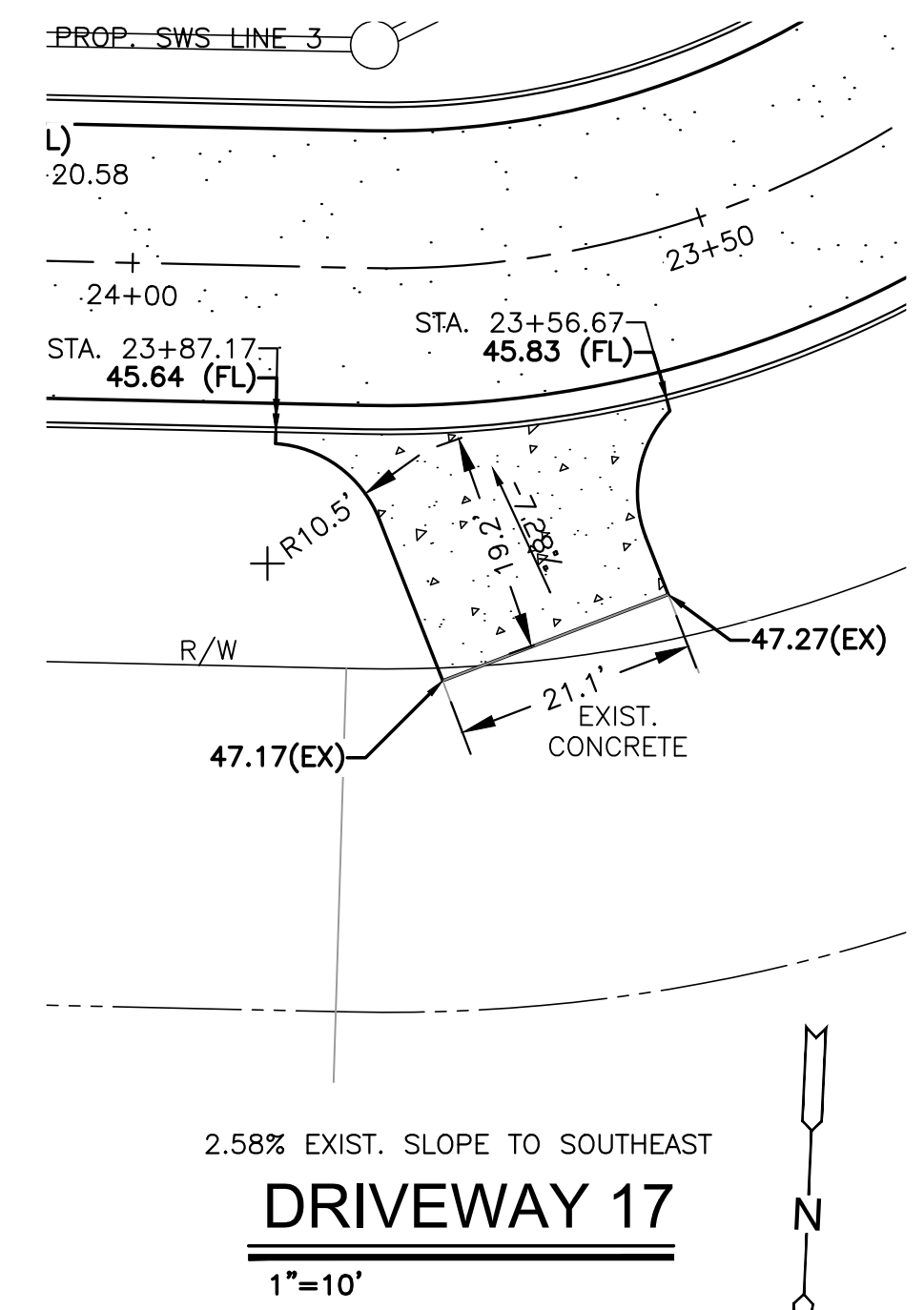
J:\PROJECTS\2019\191010483_COW_WHEATLAND_PLACE_XXXXXX\CAD\SHOTS\06_CIVIL\PAV19483_05_2024.DWG
 PLOTTED: Saturday, August 03, 2019 @ 10:24PM



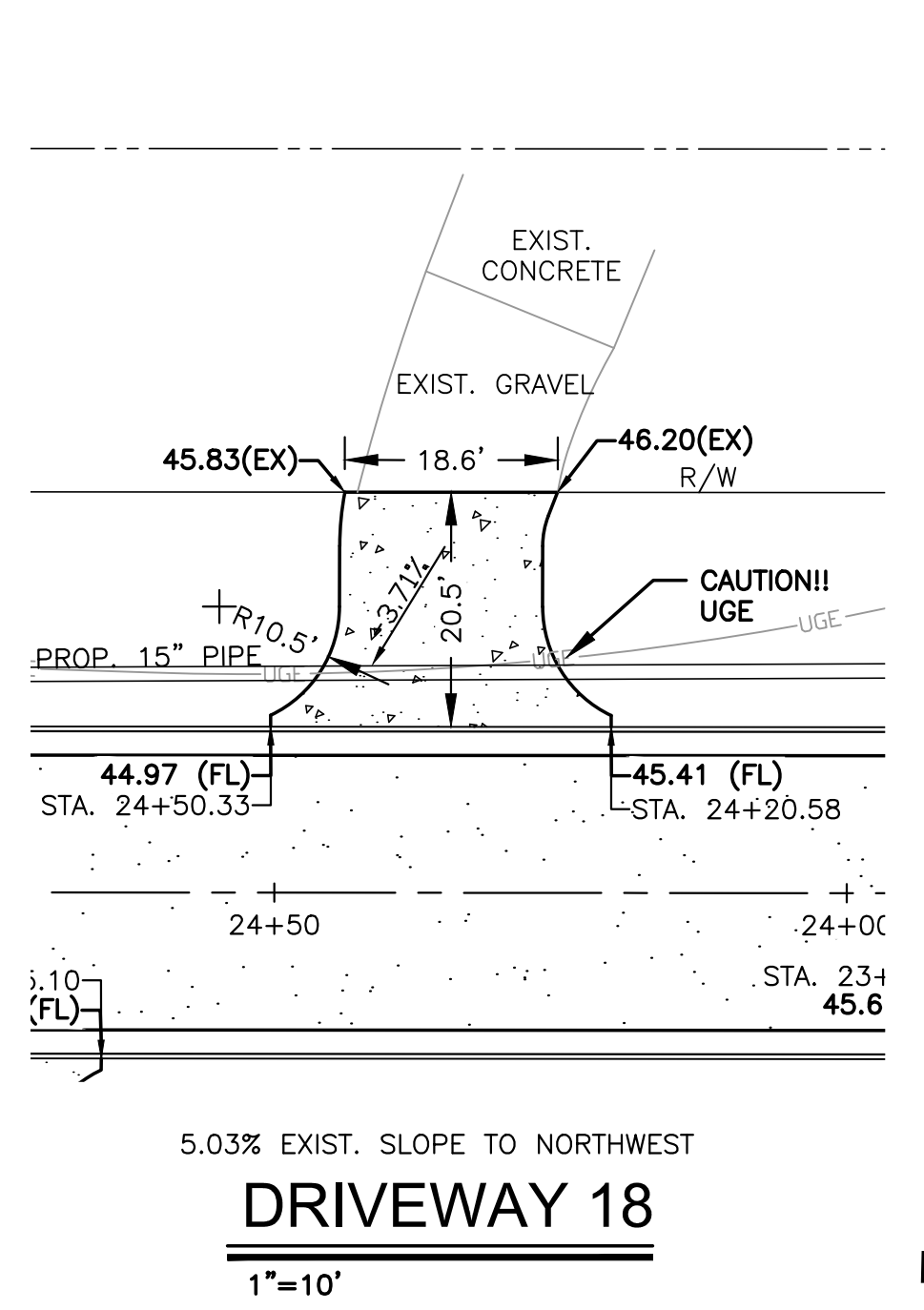
DRIVEWAY 15
1"=10'



DRIVEWAY 16
1"=10'

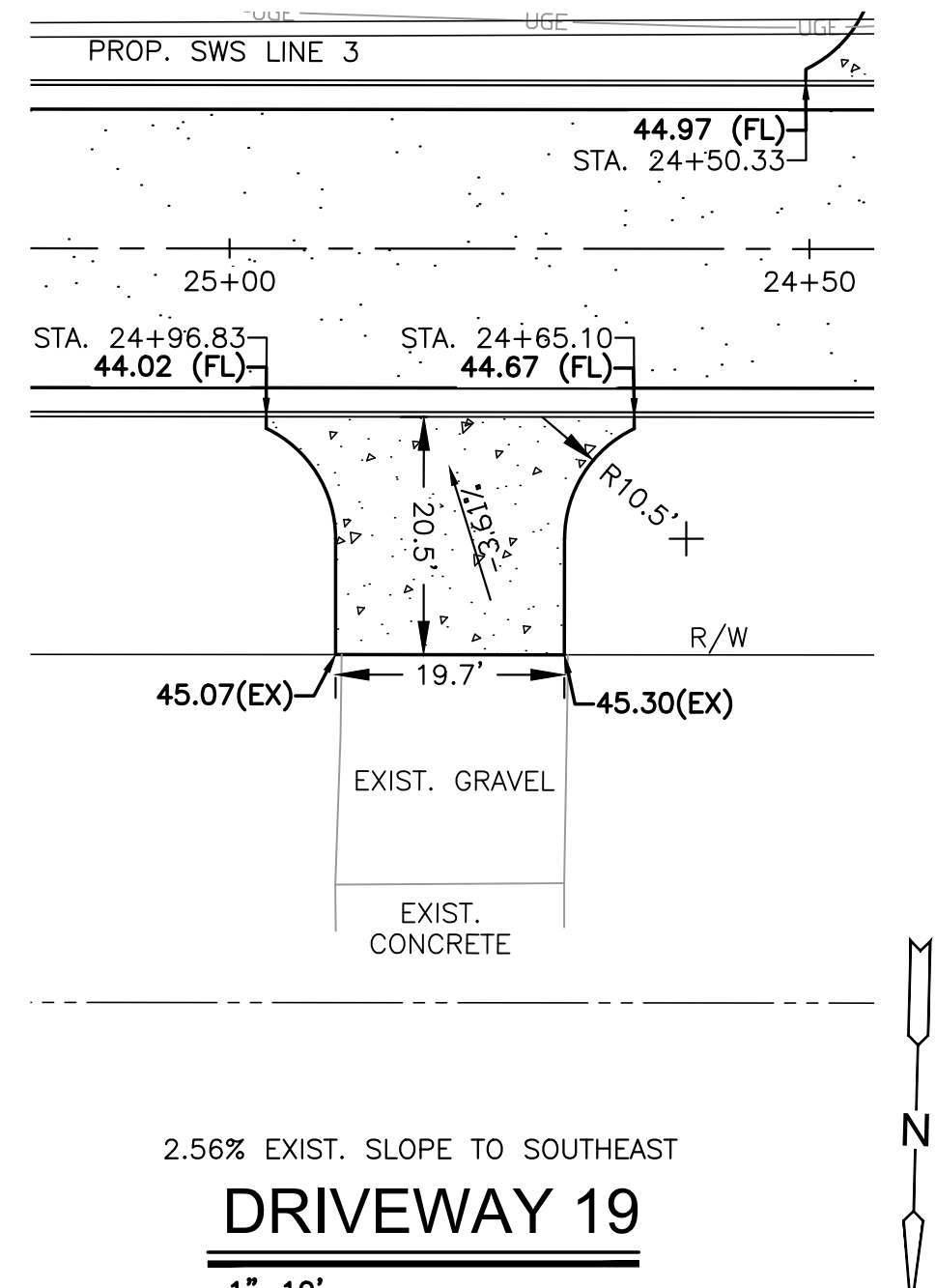


DRIVEWAY 17
1"=10'

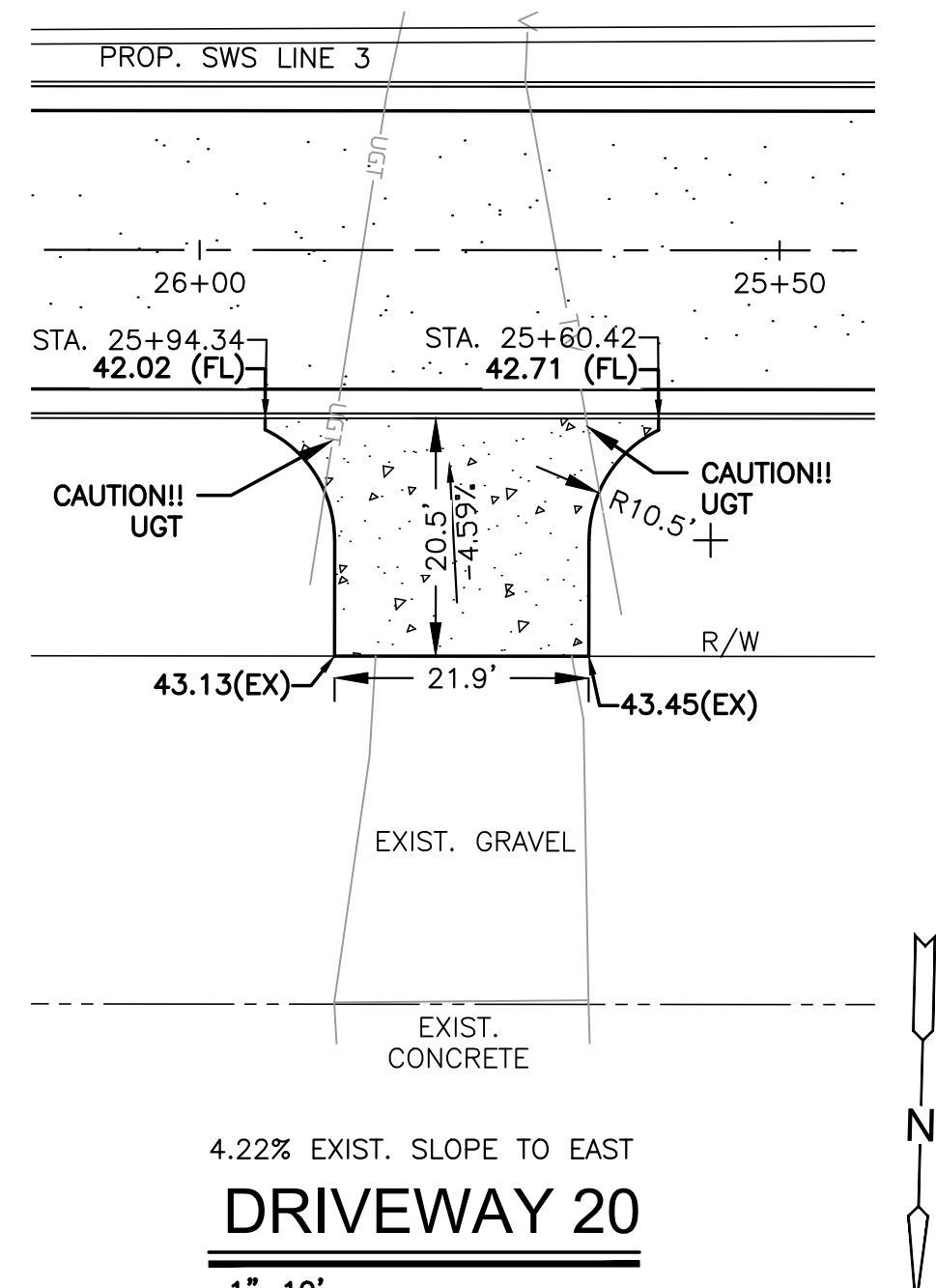


DRIVEWAY 18
1"=10'

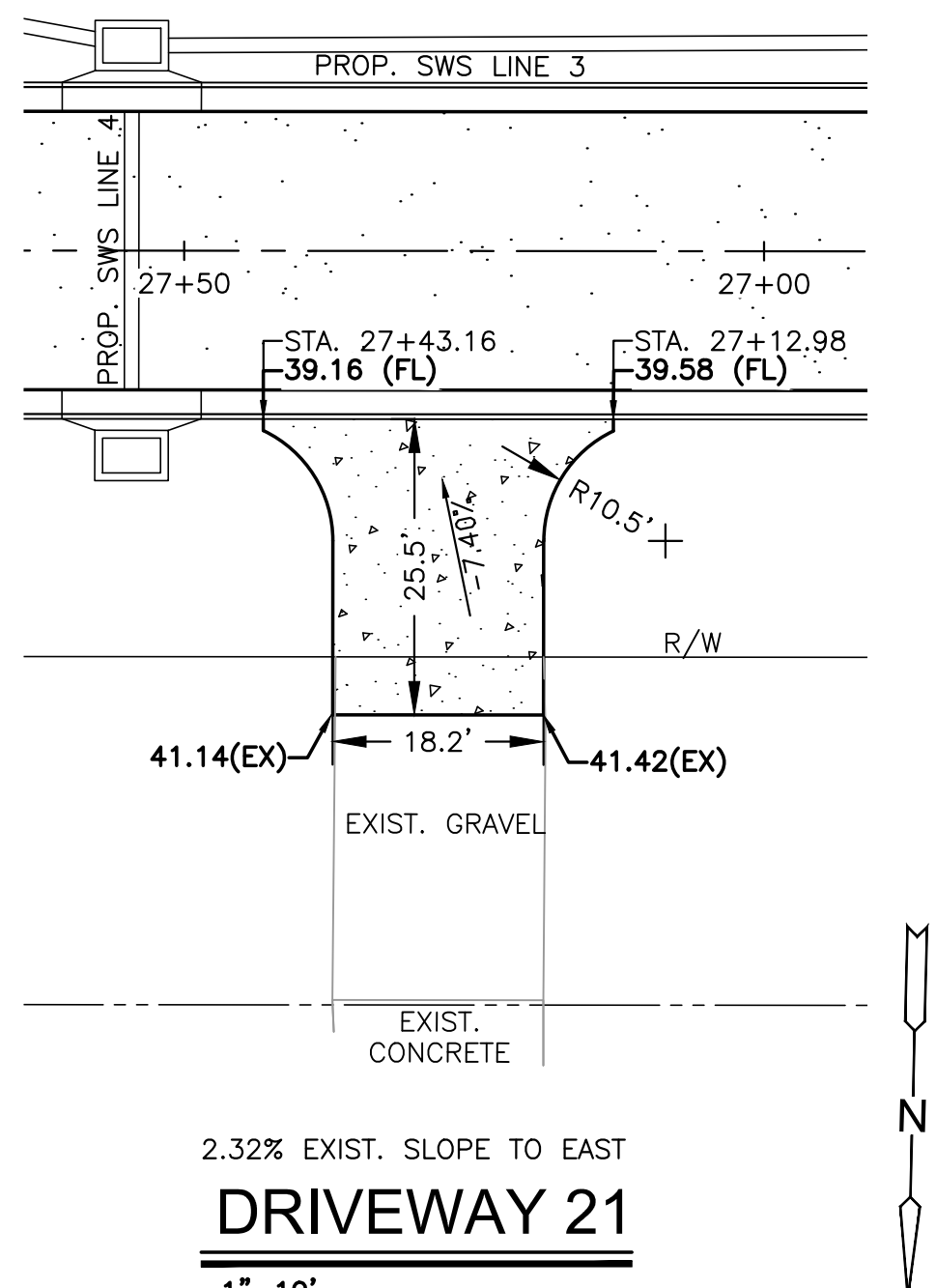
- NOTE:**
1. CONST. ALL 6" CONCRETE DRIVEWAYS PER C.O.W. DETAIL TO LIMITS SHOWN ON SHEETS 11-13.
 2. PROP. SLOPES SHOWN ARE FROM EXIST. TO PROP. FLOW LINE
 3. SEE NOTE 17 ON SHEET 1 FOR CURB AND GUTTER THROUGH DRIVEWAYS.
 4. CONTRACTOR TO DELIVER AND HAVE ALL HOMEOWNERS SIGN "DRIVEWAY REQUEST FORM" BEFORE CONSTRUCTION BEGINS. CONTRACTOR SHALL CONTACT C.O.W IF UNABLE TO GET ALL THE HOMEOWNERS SIGNATURES.



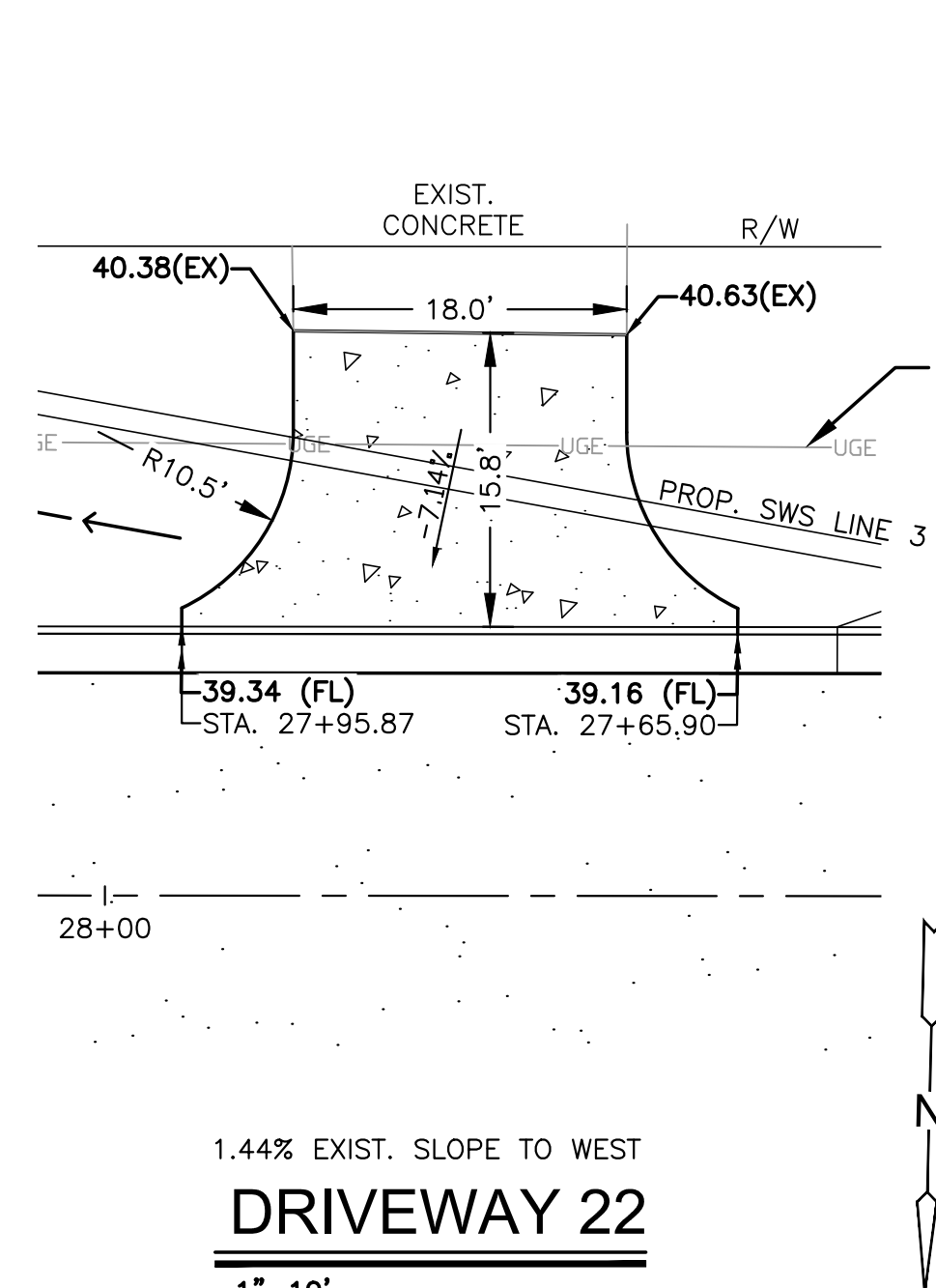
DRIVEWAY 19
1"=10'



DRIVEWAY 20
1"=10'



DRIVEWAY 21
1"=10'



DRIVEWAY 22
1"=10'

PAVING & INCIDENTAL DRAINAGE FOR
WHEATLAND PLACE
 WICHITA, KANSAS

©2019 MKEC Engineering All Rights Reserved www.mkec.com
 These drawings and their contents, including, but not limited to, all concepts, designs, & ideas are the exclusive property of MKEC Engineering (MKEC), and may not be used or reproduced in any way without the express consent of MKEC.

DRIVEWAY DETAILS 3		
PROJECT NO.	472-2019-085544	
DATE	AUG. 2019	
SCALE	1"=10'	
DESIGNED	DRAWN	CHECKED
CRM	CRM	KA
NO.	REVISION	DATE
SHEET NO.		
13 OF 43		