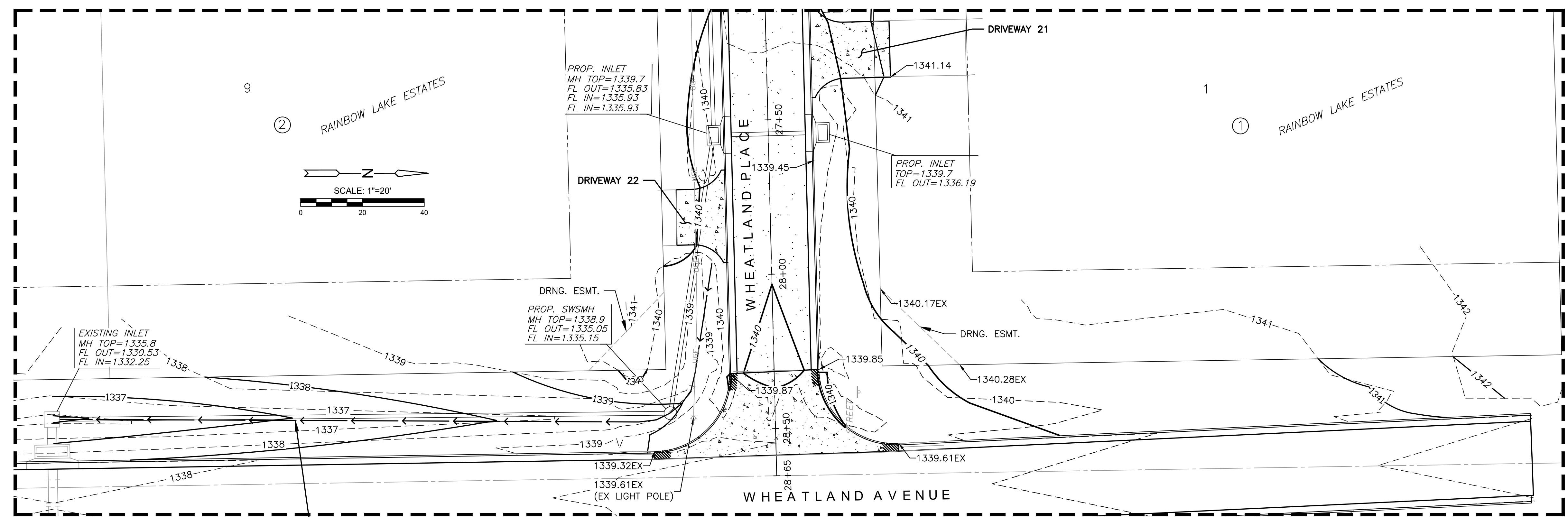


GENERAL GRADING NOTES

- SEE PAVING PLANS FOR GRADING FROM BACK OF CURB TO RIGHT-OF-WAY.
- CONTRACTOR SHALL FILL IN DESIGNATED DITCHES ON WHEATLAND AVENUE TO CONTOURS & GRADES SHOWN ON THIS SHEET.
- CONTRACTOR MUST ENSURE A 6" LAYER OF TOP SOIL IN ON ALL DISTURBED AREA TO BE SODDED/SEEDED. CONTRACTOR HAS THE OPTION OF STRIPPING TOPSOIL AND STOCKPILING IN BETWEEN RIGHT-OF-WAY AND STREET. AFTER FILLING IN DITCHES, REPLACING 6" LAYER OF TOP SOIL OR HAULING IN TOP SOIL AFTER DITCHES HAVE BEEN FILLED.
- THIS IS DESIGN GRADING. ALL GRADES SHALL BE CONTOURED SMOOTHLY WITH GENTLE ROUNDING/SHAPING OF ALL AFFECTED LAND SURFACES. ABRUPT TRANSITIONS AT THE TOP OF SLOPES WHERE PROPOSED GRADES MEET EXISTING ARE NOT ACCEPTABLE.
- ALL COMPACTION OF EARTHWORK SHALL BE 95% STANDARD DENSITY IN ACCORDANCE WITH ASTM D-698.
- STAKING, TESTING AND INSPECTION WILL BE PROVIDED BY THE CITY OF WICHITA.

1 GRADING DETAIL 1
1"=20'



2 GRADING DETAIL 2
1"=20'

EARTHWORK SUMMARY	
EXCAVATION	3,915 C.Y.
*COMPACTED FILL (95%)	820 C.Y.
* 20% SHRINK/SWELL FACTOR ADDED	
EXCESS MATERIAL TO BE HAULED OFF SITE	

©2019 MKEC Engineering All Rights Reserved www.mkec.com
These drawings and their contents, including, but not limited to, all concepts, designs, & ideas are the exclusive property of MKEC Engineering (MKEC), and may not be used or reproduced in any way without the express consent of MKEC.

GRADING PLAN

PROJECT NO.	472-2019-085544
DATE	AUG. 2019
SCALE	AS SHOWN
DESIGNED	CRM
DRAWN	CRM
CHECKED	KA

NO.	REVISION	DATE

J:\PROJECTS\2019\191010483_COW_WHEATLAND_PLACE_XXXXXX\CAD\SHOTS\06 CIVIL\PAV19483_05_2019.DWG
 PLOTTED: Saturday, August 03, 2019 @ 12:34PM