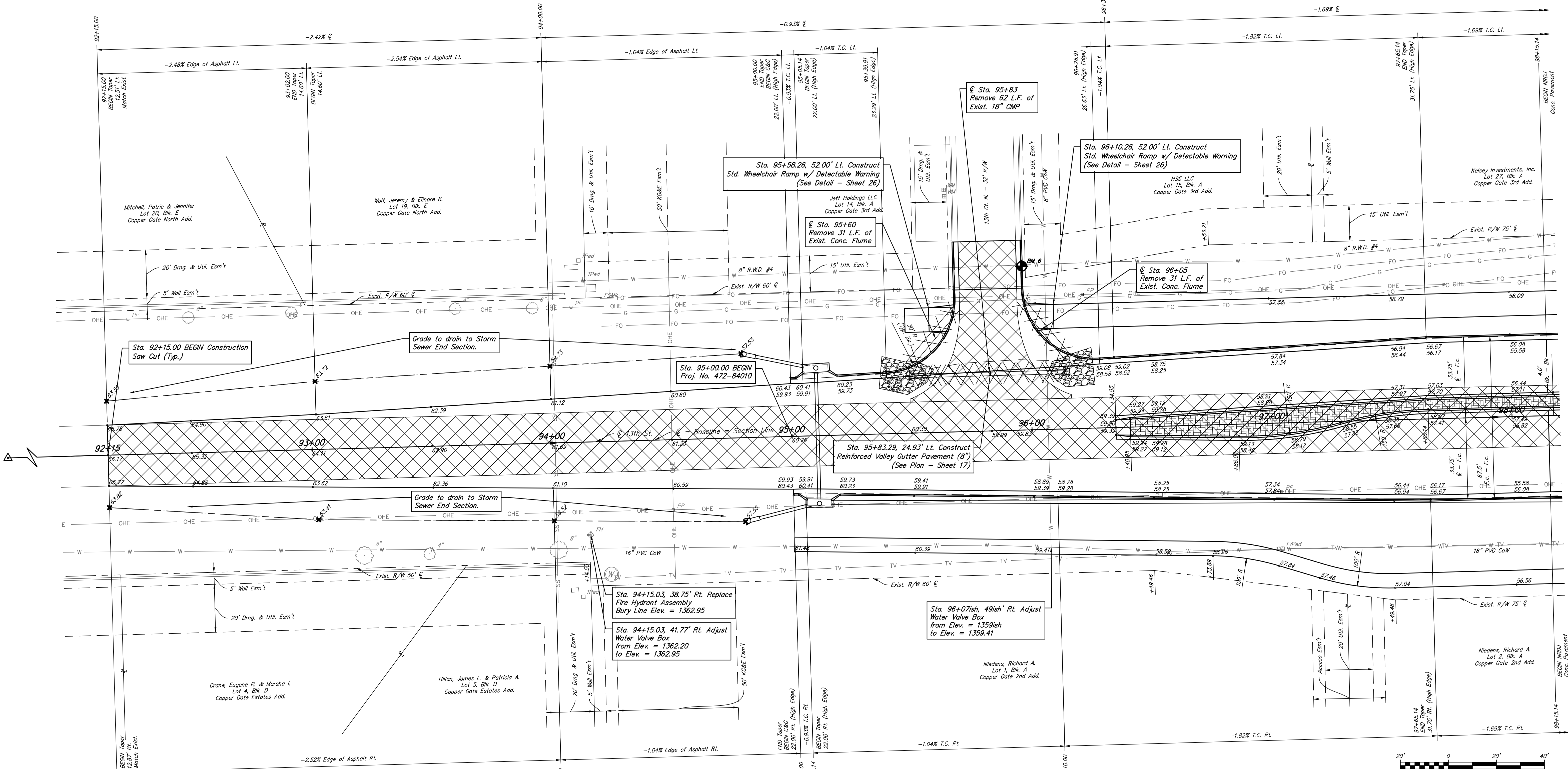
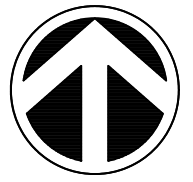


- P.O.T. Sta. 73+56.90 = S 1/4 Cor., Sec. 11, T27S, R2W.
- Sedgwick County Aluminum Cap 0.4' Below Surface
 - Top Nut Fire Hydrant 50.15' N
 - Nails in Power Pole 74.68' NE
 - R.R. Spike in Power Pole 27.10' S
 - Line of Power Poles North In Line
 - 3 Nails in Fence Post 27.92' S



Drawn By: Schwab-Eaton, P.A.
 Plotted: 5/3/2019 1:40 PM
 File: 15-W011_Road.dwg

Utility Contact List (For Emergencies, See Sheet 02 for Contact Information)

Owner	Contact	Type	Phone No.
City of Wichita Water	Greg Lolley	Water	316.268.4334
City of Wichita Sewer	LaDonna Lawrenz	Sanitary Sewer	316.268.4555
Westar Energy	Miles Capps	Power	316.261.6824
Sedgwick Co. Electric Coop.	Scott Ayres	Power	316.542.3131
AT&T	Jason Edwards	Telephone	316.268.2008
Cox Communication	James Walburn	Cable	316.260.7491
Block Hills Energy	Calvin Briggs	Gas	316.941.1628
Sedgwick Co. RWD #4	Jerry Milam	Water	316.794.7320

- Removal, typ.
- Trees to be Removed, typ.



BM #6 Square Cut E. Back of Curb at 13th Ct. and 13th St. N.
 Sta. 95+97.59, 68.25' Lt. Elev. = 1361.36

CITY OF WICHITA

**13TH STREET NORTH
 STA. 92+15 TO STA. 98+20**

Schwab Eaton

DESIGNED	MS	DRAWN	JM	SCALE	1" = 20'-0"	SHEET NO.	7
CHECKED	MS	DATE	09/18				