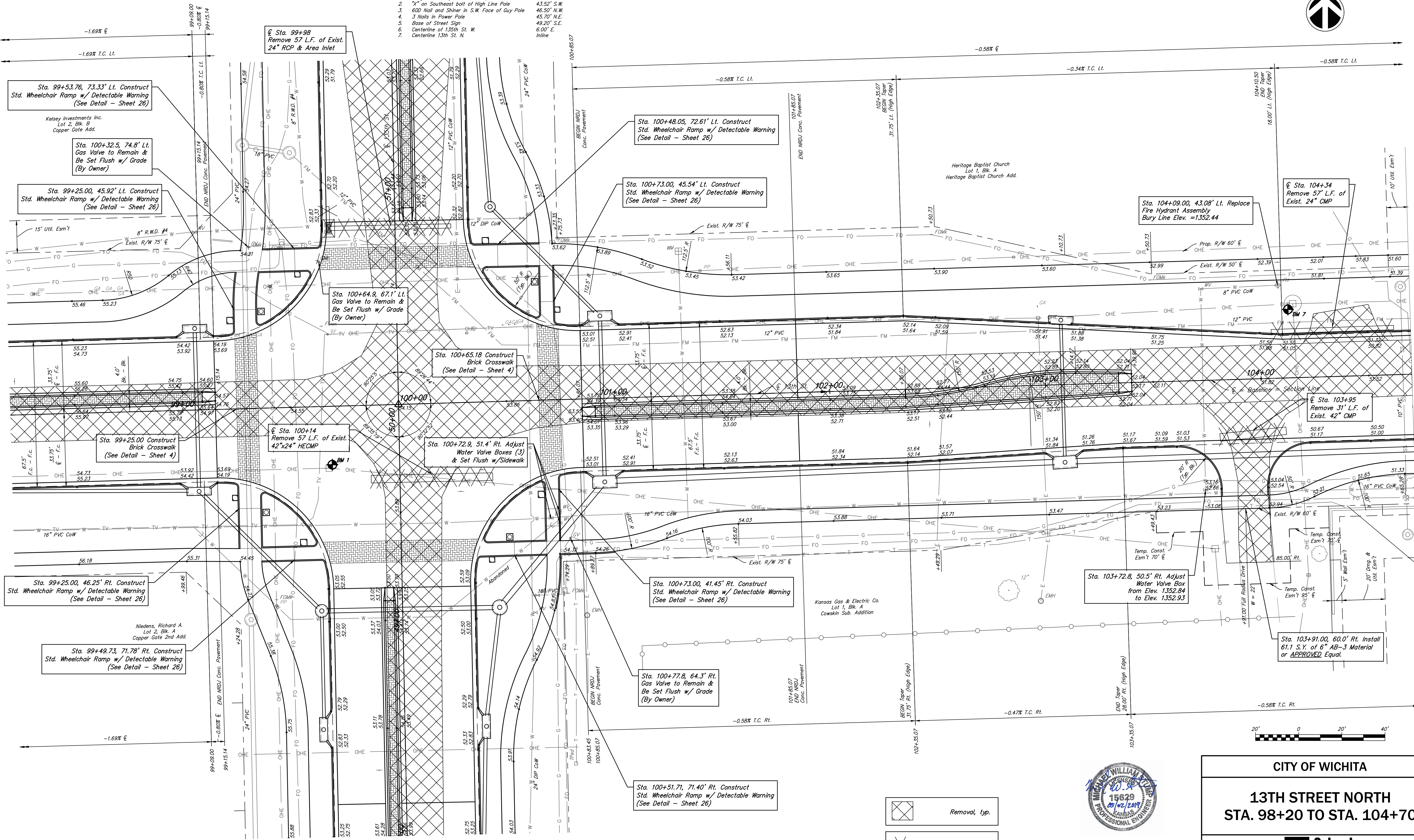


Drawn By: Schwab-Eaton, P.A.
 5/3/2019 1:40 PM
 Plotted:
 File: 15.W01.Road.dwg

- P.L. Sta. 100+00.00 = SW Cor. Sec. 12, T27S, R2W
- Sedgwick County Aluminum Cap on Surface
 - 3" on Southeast bolt of High Line Pole
 - 600 Nail and Shiner in S.W. Face of Guy Pole
 - 3 Nails in Power Pole
 - Base of Street Sign
 - Centerline of 135th St. W.
 - Centerline 13th St. N.



- Removal, typ.
- Trees to be Removed, typ.



BM# 7 Square Cut on Power Pole Concrete Pad
 N. Side 13th St. N. 13th St. Sta. 99+68.03, 27.65' Rt.
 Sta. 104+13.39, 31.72' Lt. Elev.=1354.50

BM# 1 City of Wichita Disc on Power Pole Concrete Pad
 S. Side 13th St. N. 13th St. Sta. 99+68.03, 27.65' Rt.
 Sta. 99+68.03, 27.65' Rt. Elev.=1356.07

CITY OF WICHITA

**13TH STREET NORTH
 STA. 98+20 TO STA. 104+70**

Schwab Eaton

DESIGNED	MS	DRAWN	JM	SCALE	1" = 20'-0"	SHEET NO.	8
CHECKED	MS	DATE	09/18				