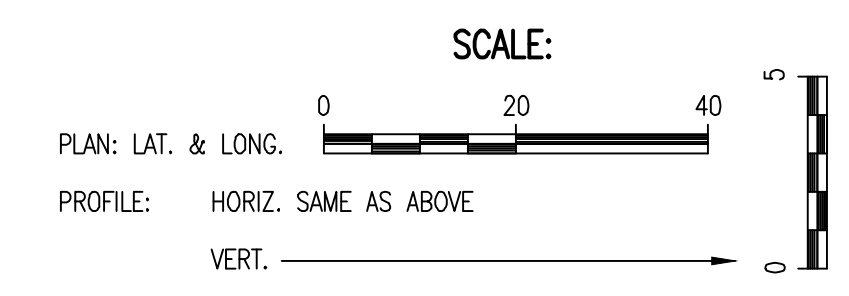


N: 10,224.4160, E: 4,808.1959  
Sta. 0+00.00  
EXIST. MH 1  
Install Outside Drop Assembly  
Install 10" x 8" Reducer just below the upper 45° Bend.  
Install 10" Pipe/Fittings from Reducer down  
and connect to Existing 10" Stub \*  
(Cut 10" Stub as required)  
Connect the upper 8" pipe by Coring  
the existing manhole, installing a  
waterstop gasket, and non-shrink grout.

Remove and replace  
6 L.F. Concrete  
Sidewalk in kind.

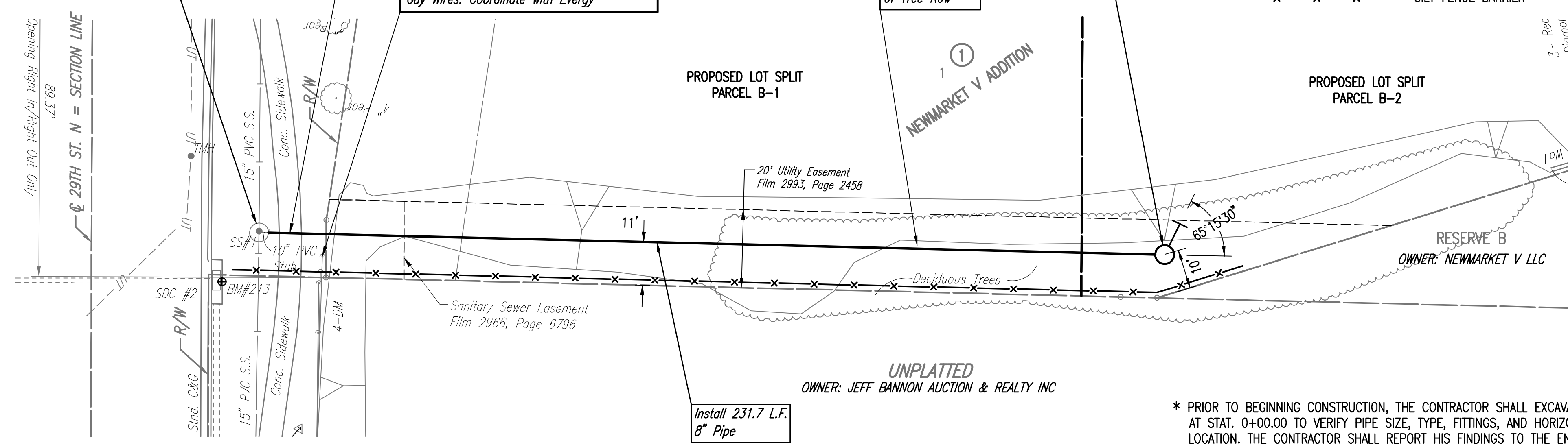
CAUTION!!!  
Existing Guy Wires. If required, temporarily  
support pole through construction and reset  
Guy Wires. Coordinate with Evergy

N: 9,992.7568, E: 4,802.5043  
Sta. 2+31.73  
Const. MH 2  
Standard MH  
Install 1- 6"  
Stub and Plug



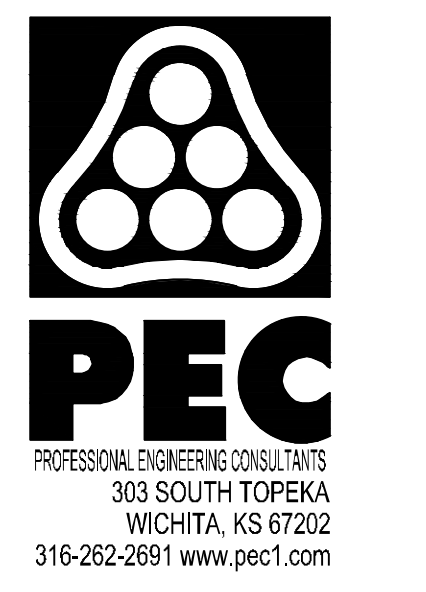
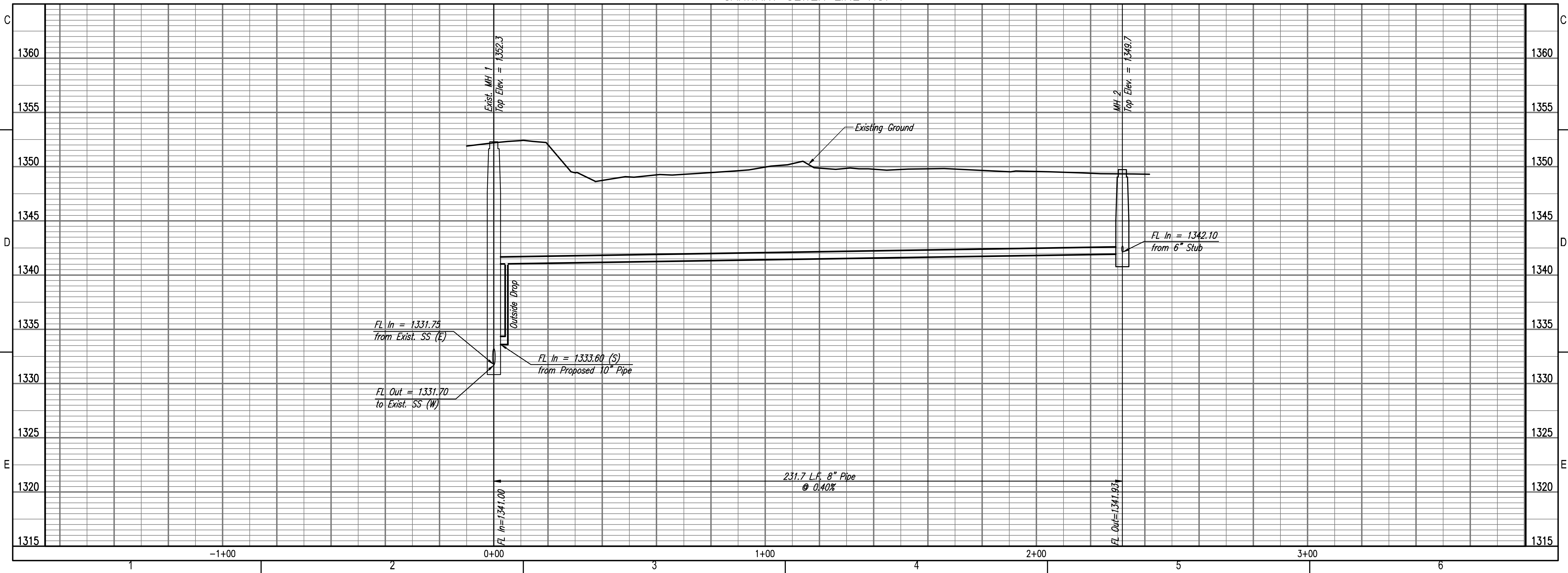
500 = SEE SHEET NO. C102 FOR SANITARY SEWER COORDINATES (TYP.)  
-x-x-x-x- = SILT FENCE BARRIER

SSM #1  
Conc. MH  
Top=1352.30  
E 15" PVC 1331.75 (E)  
E 15" PVC 1331.70 (W)  
E 10" PVC Stub 1333.60 (S)



\* PRIOR TO BEGINNING CONSTRUCTION, THE CONTRACTOR SHALL EXCAVATE THE EXISTING 10" STUB AT STAT. 0+00.00 TO VERIFY PIPE SIZE, TYPE, FITTINGS, AND HORIZONTAL AND VERTICAL LOCATION. THE CONTRACTOR SHALL REPORT HIS FINDINGS TO THE ENGINEER SO THAT ANY NECESSARY PLAN MODIFICATIONS CAN BE MADE. ANY ADDITIONAL LABOR OR MATERIALS NECESSARY TO COMPLETE THE CONNECTION SHALL BE CONSIDERED SUBSIDIARY TO THE PROJECT.

SANITARY SEWER LINE NO. 1



NEWMARKET V ADDITION  
SANITARY SEWER EXTENSION  
GARY JANZEN, P.E. - CITY ENGINEER  
CITY OF WICHITA  
PROJECT NO. 468-2019-010174 / 468-85152

Issue:	
JOB NO.	35-180714-000-6364
DATE	OCTOBER 2019
PM	RWG
DESIGNED BY	TBK
DRAWN BY	KTD
CHECKED BY	RWG

SANITARY SEWER LINE NO. 1

C103

SAVED 2/28/2020 11:31:35 AM BY TREVOR KAUFMAN  
 PLOTTED 2/28/2020 11:36:00 AM BY TREVOR KAUFMAN, PE  
 U:\WICHITA-CIVIL\2018\180714\000\MODDRAWINGS\180714-000-C103-SANITARY SEWER LINE NO.1.DWG