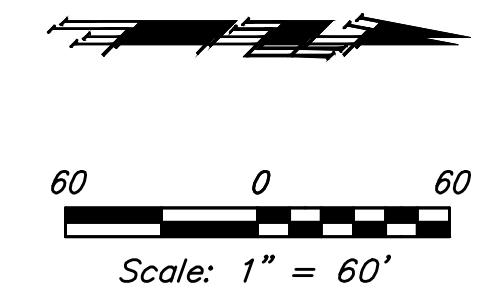


**BENCHMARKS:**  
**BM #1:** "□" on Fence Footing under warning US Air Force Installation Sign West of Rock Road, 400' N. of W 1/2 Cor. Elev. = 1377.45 NAVD88

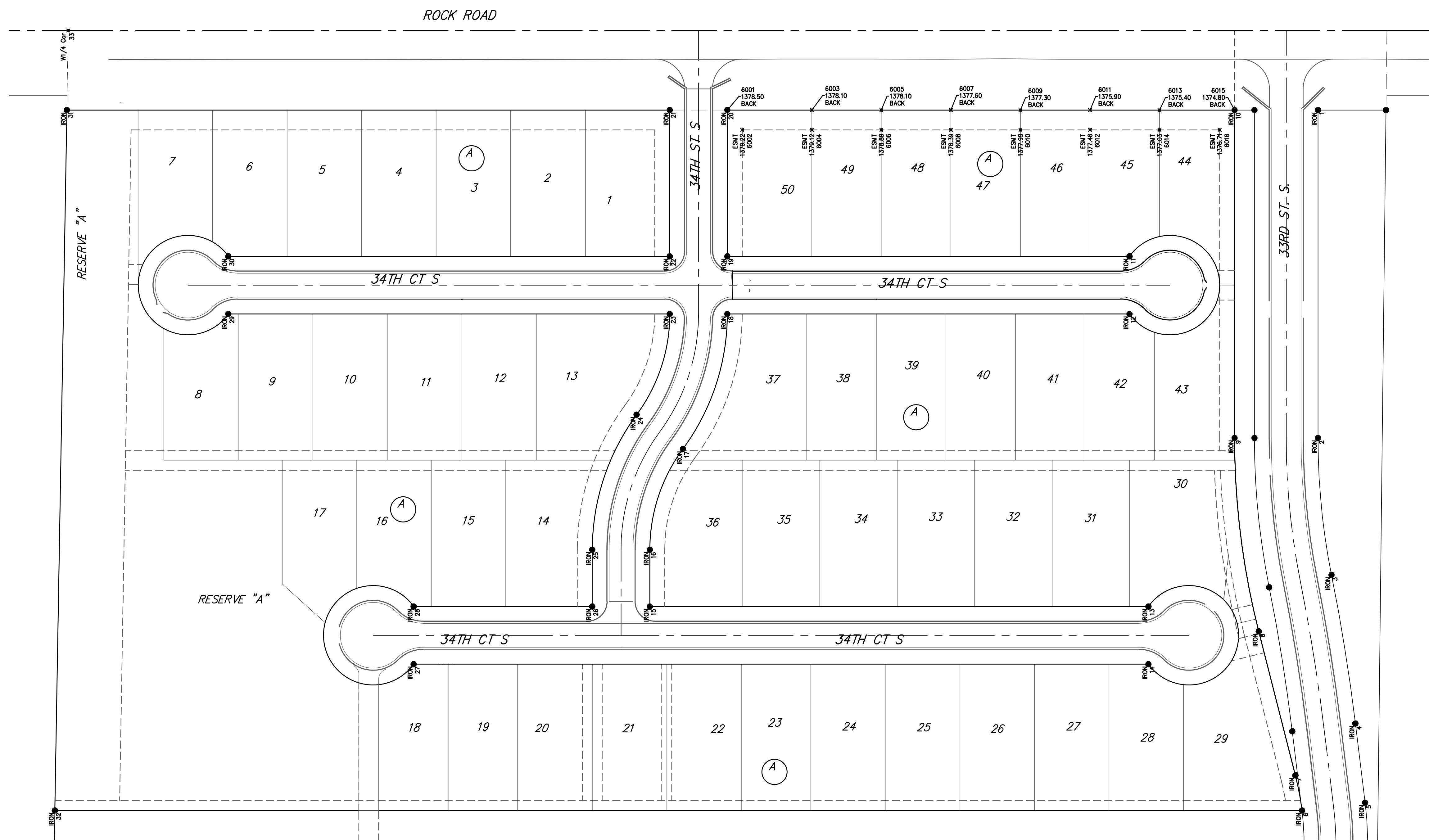
**BM #2:** Cross cut in top of curb West end of southwest curb return, 34th & 34th Ct. (Lots 1-13, Block A) Elev. = 1379.36 NAVD88

**BM #3:** Cross cut in top of curb North end of north curb return, 34th & 34th Ct. (Lots 22-36, Block A) Elev. = 1377.16 NAVD88



Control Points			
Point #	Northing	Easting	Description
1	21,257.89	10,080.00	IRGN
2	21,257.89	10,410.11	IRGN
3	21,271.48	10,547.88	IRGN
4	21,285.54	10,697.55	IRGN
9	21,173.89	10,410.11	IRGN
10	21,173.89	10,080.00	IRGN
20	20,663.39	10,080.00	IRGN
21	20,605.39	10,080.00	IRGN
22	20,605.39	10,227.25	IRGN
23	20,605.39	10,285.25	IRGN
24	20,572.05	10,386.70	IRGN
30	20,161.12	10,227.25	IRGN

Easement Grading				
Point #	Northing	Easting	Elevation	Description
6001	20,663.3903	10,079.9995	1378.50	BACK
6002	20,678.3903	10,099.9995	1379.22	ESMT
6003	20,748.3903	10,079.9994	1378.10	BACK
6004	20,748.3903	10,099.9994	1379.12	ESMT
6005	20,818.3903	10,079.9994	1378.10	BACK
6006	20,818.3903	10,099.9994	1378.89	ESMT
6007	20,888.3903	10,079.9993	1377.60	BACK
6008	20,888.3903	10,099.9993	1378.39	ESMT
6009	20,958.3903	10,079.9992	1377.30	BACK
6010	20,958.3903	10,099.9992	1377.99	ESMT
6011	21,028.3903	10,079.9992	1375.90	BACK
6012	21,028.3903	10,099.9992	1377.46	ESMT
6013	21,098.3903	10,079.9991	1375.40	BACK
6014	21,098.3903	10,099.9991	1377.03	ESMT
6015	21,173.8901	10,079.9992	1374.80	BACK
6016	21,158.8940	10,099.9991	1376.71	ESMT



**Baughman**

Rocky Ford Addition - Phase 2B

**COORDINATES**

Street Improvements

---

Baughman Company, P.A. 315 Ellis St. Wichita, KS 67211 P 316.262.7271 F 316.262.0149  
ENGINEERING | SURVEYING | PLANNING | LANDSCAPE ARCHITECTURE

PROJECT NUMBER 472	DESIGN AEG	DRAWN JAK
REVISIONS:	APPROVED	DATE 3/2020
	SCALE Noted	SHEET <b>15 OF 16</b>