

GENERAL NOTES:

- Contractor will be required to provide notice to utility companies a minimum of seventy-two (72) hours prior to any excavation, as follows:
 Kansas One-Call 687-2470
 The Contractor must notify the following in case of an emergency:
 Cox Communications 262-4270
 Kansas Gas Service 1-888-482-4950
 Westar Energy 383-8650
 Aquila Energy 1-800-303-0357
 AT&T 268-2245
 City of Wichita Water Dept. 268-4563
 City of Wichita Sewer Maint. 268-4024
 City of Wichita Storm Sewer Maint. 268-4090
 City of Wichita Traffic Maint. 268-4034
 Conoco Phillips Pipeline Co. 1-877-267-2290
 Southern Star Pipeline Co. 529-6600
 Kinder-Morgan Pipeline Co. 1-888-844-5658

Utility service lines, poles, valve boxes, meters, and etcetera are to be adjusted as necessary by others prior to construction unless the plans specifically call for their adjustment by the Contractor or unless the plans specifically identify a utility to be adjusted by its owner during construction. Existing utilities and their location, as shown on the plans, represent the best information obtainable for design. The Contractor will be required to work around existing utilities within the right-of-way which do not conflict with proposed construction.

Rubble from the removal of miscellaneous structures and excess excavation which is to be wasted shall be disposed of on sites to be provided by the Contractor. These sites shall be approved by the Engineer as to suitability, appearance and site location. Locations, in the opinion of the Engineer, that will leave an unsightly appearance will not be approved. All disposal sites must be approved by the Kansas Department of Health and Environment. Material either stockpiled or disposed of in a flood plain would require a Kansas State Board of Agriculture permit. Any material dumped in waters of the United States or wetlands is subject to U.S. Corps. of Engineers permitting regulations. Any material buried or stockpiled beyond approved construction limits would require additional archaeological investigations unless buried in a previously approved borrow location.

Existing trees shall be trimmed/removed ONLY with approval of the Developer. Trimming will be permitted only with chainsaws. Trees not in direct conflict with proposed new construction shall remain and be protected from damage. All trimming or removal shall be included in bid item "Site Clearing". Prior to construction, an on-site meeting with the developer will be held to discuss grading limits and tree trimming/clearing along the north, south and east line of the project. The intent of the work is to keep the main tree row and grade the drainage swales away from the trees.

The Contractor shall give all property owners and/or tenants of developed property abutting the construction of this project a minimum of ten (10) days notice prior to start of construction.

The Contractor shall be responsible for preserving property irons. The Contractor will be required to re-establish any property irons which are damaged or destroyed by his construction operations. Such irons shall be re-established by a licensed land surveyor in accordance with state laws.

- All existing and proposed erosion control measures including silt fencing, erosion control mat, straw bales, inlet barriers, and const. entrance shall be maintained throughout construction by the contractor until project is accepted by the City of Wichita. The on-site engineer shall complete weekly reports on the status of erosion control measures. The contractor shall be required to comply with maintenance and/or replacement of erosion control measures as determined by the on-site engineer until project is accepted by City of Wichita. Maintenance and/or replacement of erosion control measures to be paid by L.S. bid item "Maintain Existing BMP's."
- All excess excavation shall remain on-site and shall be stockpiled or spread at a location determined by the Engineer.
- All areas within Res. "D" and Res. "E" above the water surface, Res. A, and Res. "C" of Rocky Ford 2nd Addition above the water surface disturbed by construction shall be seeded, mulched (where erosion control blanket is not specified), and fertilized with native seed mix as follows:

Native Seed Mixture:	Item:
PLS Rate: lbs./ac.	
80	Fertilizer (16-20-0)
2	Big Bluestem Grass Seed (Kaw)
10	Canada Wildrye Grass Seed
2	Indiangrass Seed (Osage)
2	Little Bluestem Grass Seed (Aldous)
6.3	Side Oats Grama Grass Seed (El Reno)
10	Sterile Wheatgrass (Regreen/Quick Guard)
1	Switchgrass Seed (Blackwell)
0.5	Tall Dropseed
4	Western Wheatgrass Seed (Barton)
5	Annual Rye
2 tons/acre	Prairie Hay/Bromegrass Hay mulch

All other disturbed areas are to be seeded as follows: (Temporary Seeding)
 SEED --- Rye grass (PLS)--5#/1000 Sq. Ft.

All costs associated with seeding including perpetration of ground, seeding, fertilizing, mulching, shall be including in the L.S. bid item "Seeding"

An additional bid item for "Seeding, Temporary" has been included and may be used at the discretion of the Design Engineer. Temporary seed shall be Annual Rye at of 5 Lbs./1000 Sq. Ft. unless otherwise noted and shall be planted when permanent seed or sod cannot be used due to seasonal limitations.

A Geotechnical Report is available for this site. Contact the Design Engineer.

The Developer for this project is Jay Russell
 P.O. Box 75450, Wichita, KS 67275
 PH# (316) 722-2417
 Email jay.russell@russellco.com

STORMWATER DRAIN IMPROVEMENTS

to serve

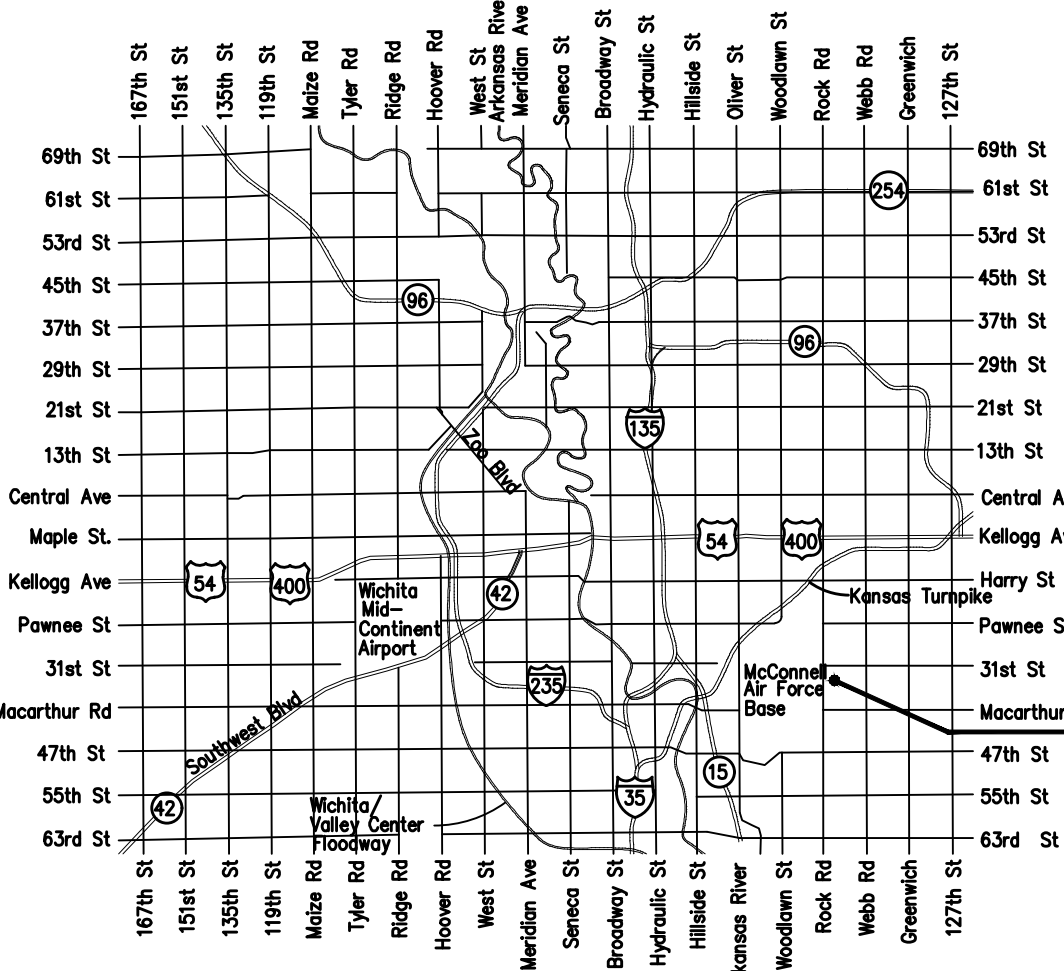
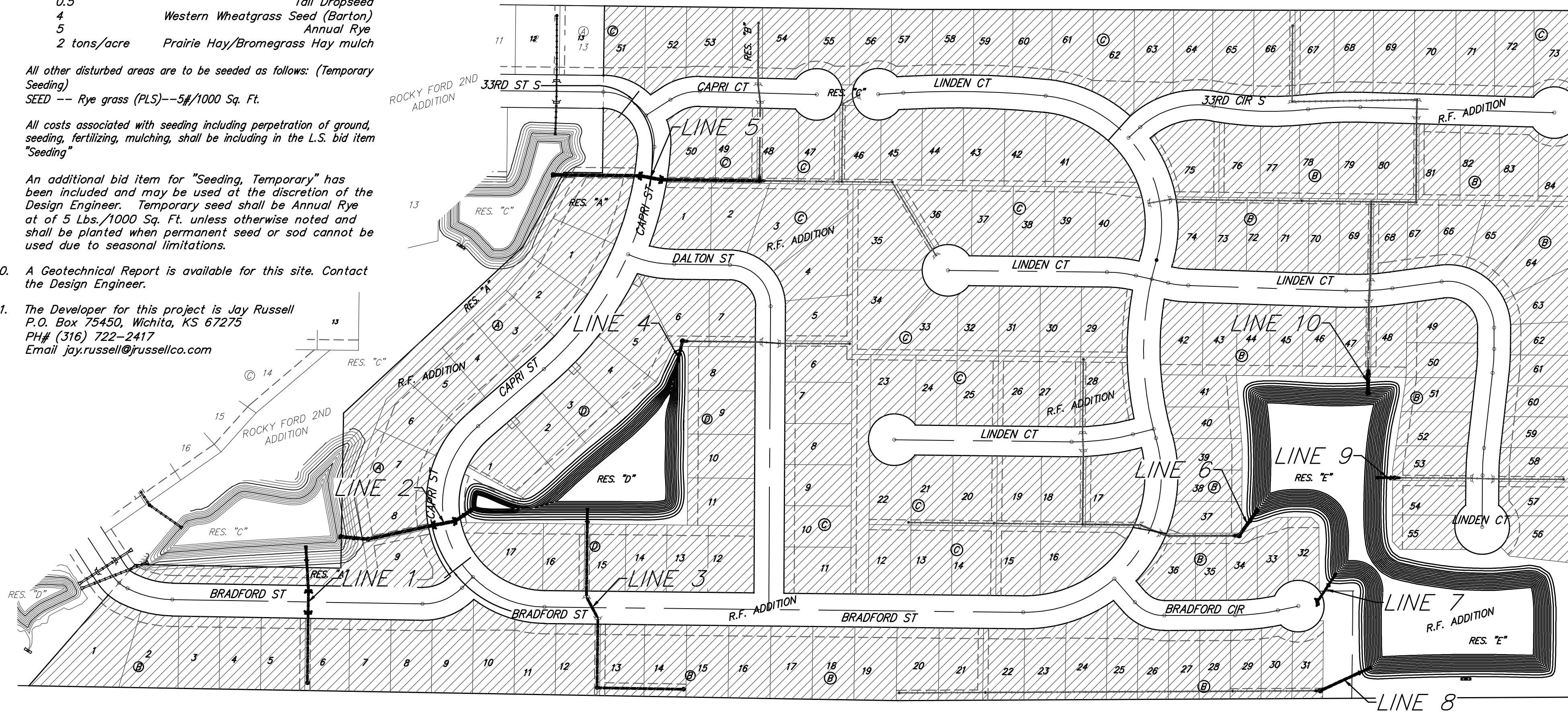
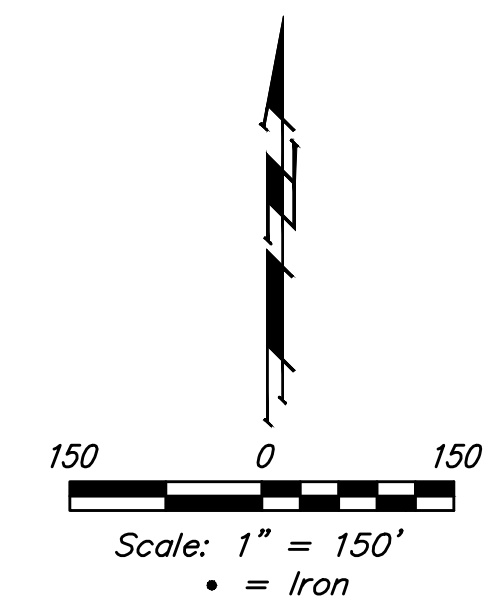
R.F. ADDITION

CITY OF WICHITA, KANSAS

Gary Janzen, P.E. City Engineer
 Project Number: 468-2019-085421
 OCA Number: 751604

SHEET INDEX

Title Sheet	1
Line 1	2
Line 2	3
Line 3	4-5
Line 4	6
Line 5	7
Line 6 & 7	8
Line 8	9
Line 9 & 10	10
Mass Grading / Erosion Control	11-13
Compaction Testing Table	14
West Pond	15
East Pond	16
Erosion Control BMP Details	17-21
Mass Grading Typical Section	22
Std. Type 1A Curb Inlet Detail	23
Backyard Inlet Detail	24
Frame and Cover Details	25
Coordinate Sheet	26-27
Copy of Plat	28

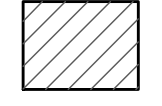


VICINITY MAP

BENCHMARKS

- #1: "□" CUT CHISELED ON CURB, 15.2' S. OF SW COR., LOT 6, BLOCK A, ROCKY FORD 2ND ADDITION. ELEV. = 1385.10 NAVD88
- #2: "□" CUT CHISELED ON CURB, 8.6' N. & 11.7' W. OF SW COR., LOT 14, BLOCK C, ROCKY FORD 2ND ADDITION. ELEV. = 1380.11 NAVD88

BENEFIT DISTRICT



EARTH WORK TOTALS (Unadjusted)

Project Totals	C.Y. EXCAVATION	C.Y. FILL
	120,400	110,220

Earthwork Quantities reflect the best available topography. The Contractor shall satisfy himself with the earthwork quantities as bid for L.S. bid items "Excavation" & "Grading, Mass" prior to bidding. No additional payments or change orders for earthwork will be accepted.

Construction Sequence:

- Sanitary Sewer by Mies Construction
- SWD Grading & Storm Sewer by This Contract Project to Begin As Soon As Possible

The grading shall begin while the sewer project #468-2019-0053338 is under construction, but no fill shall be placed over the proposed sewer lines until the sewer has been installed. Once the sewer project is complete, the pond construction in Res. D and grading shall be completed for following lots and adjacent streets: Lots 1-9, Blk A; Lots 1-11, Blk B; Lot 51, Blk C; Lots 1-5, 17, Blk D. Once grading is completed and as-builts in this area are approved, the water line contractor will be allowed to begin construction.

- Water Project by Other Contract
- Paving by Other Contract

Stormwater Certification:
 New Development or Redevelopment
 Stormwater Permit # SW2020-0022
 NOI Permit # S-AR94-1477 KSR113908

These construction plans were prepared in accordance with the current Stormwater management Regulations as set forth in the City of Wichita's Stormwater Management Ordinance 16.32 and the policies/guidelines presented in the Wichita/Sedgwick County Stormwater Manual.

Site Area (Acres) = 70.0 ac.
 Disturbed Area (Acres) = 70.0 ac.
 Water Quality Treatment: Wet Ponds
 Downstream Channel Protection: Wet Ponds
 Detention: Wet Ponds
 The BMP used for this development is Wet Ponds

APPROVED AS NOTED
 BY WICHITA PUBLIC WORKS ENGINEERING
 AND STORMWATER DIVISION

Stormwater Approved by Joe Hickle 04/13/2020 (By HJW)

NOTE TO CONTRACTORS

Inspection and testing for this project is to be provided by a Licensed Consulting Engineering Firm under contract with the Owner/Developer. Said inspection to be in accordance with the City of Wichita standard construction engineering practices and certified by a Licensed Professional Engineer in the state of Kansas. No work shall be performed the Contractor without such inspection nor shall any work be commenced without written authorization by the City Engineer. All Construction and Materials shall comply with the current City of Wichita Specifications and Standards and Special Provisions. (on file and available at Wichita.gov).

An approved copy of these plans signed by City staff are required on-site.

Baughman Company, P.A. 315 Ellis St. Wichita, KS 67211 P 316-262-7271 F 316-262-0148
 ENGINEERING | SURVEYING | PLANNING | LANDSCAPE ARCHITECTURE

