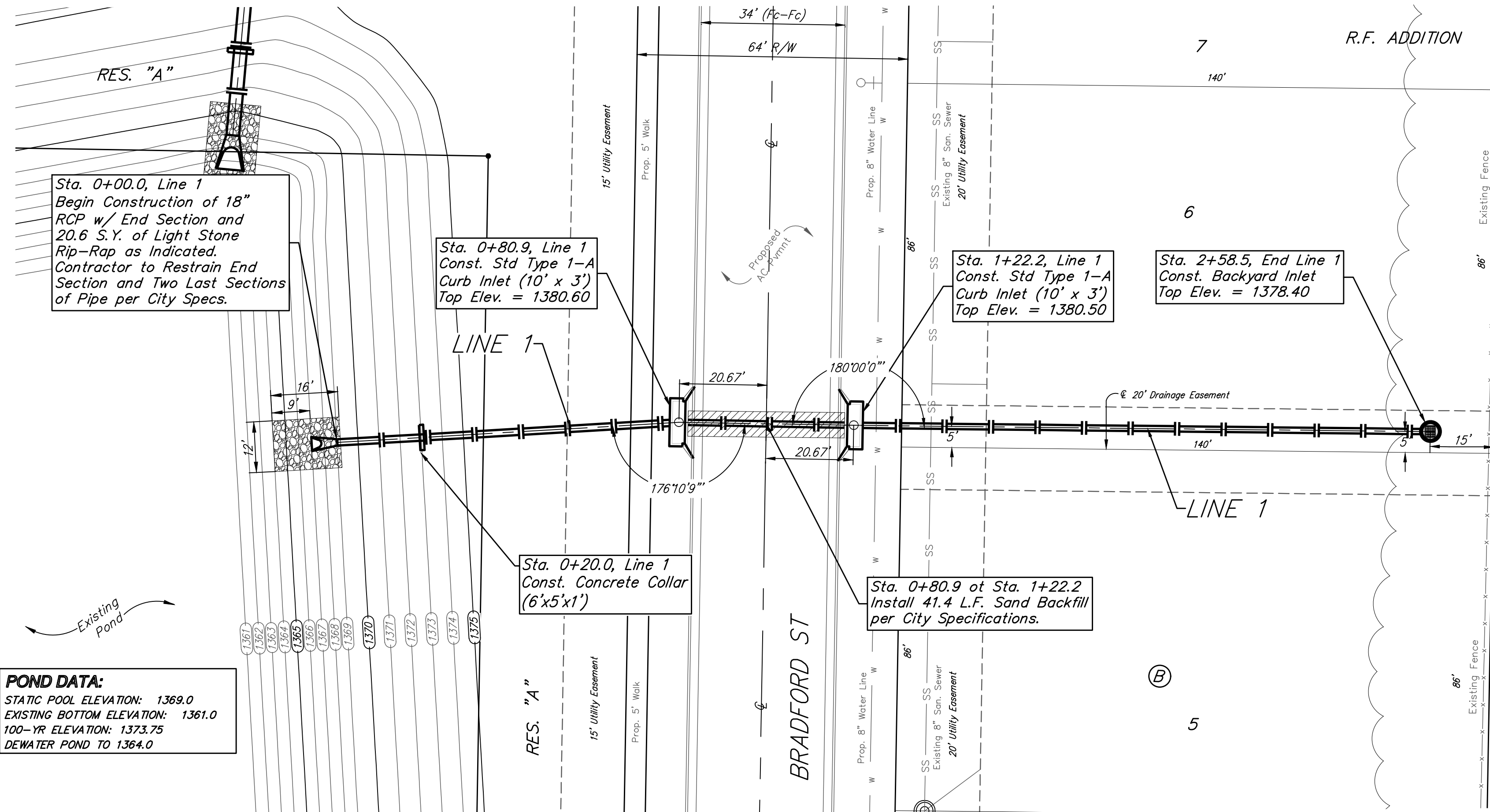


BENCHMARKS:

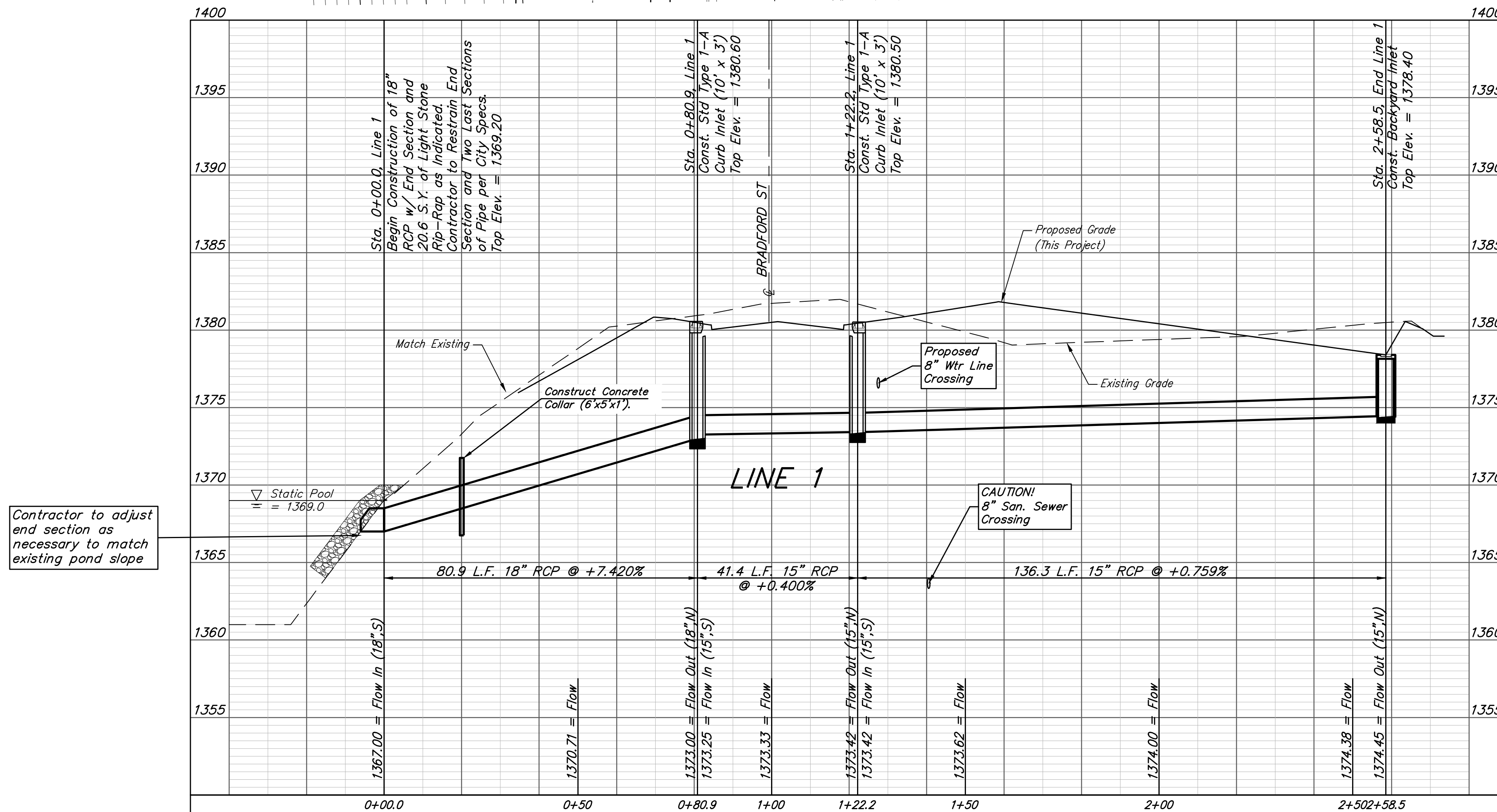
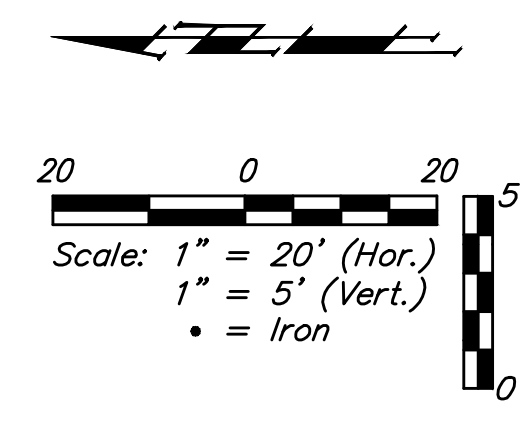
#1: "□" CUT CHISELED ON CURB,
15.2' S. OF SW COR., LOT 6,
BLOCK A, ROCKY FORD 2ND
ADDITION.
ELEV. = 1385.10 NAVD88

#2: "□" CUT CHISELED ON CURB,
8.6' N. & 11.7' W. OF SW COR.,
LOT 14, BLOCK C, ROCKY FORD
2ND ADDITION.
ELEV. = 1380.11 NAVD88



POND DATA:
STATIC POOL ELEVATION: 1369.0
EXISTING BOTTOM ELEVATION: 1361.0
100-YR ELEVATION: 1373.75
DEWATER POND TO 1364.0

Existing trees which are in direct conflict with proposed new construction shall be removed by the Contractor ONLY with approval of the Developer or Engineer. Trees not in direct conflict with proposed new construction shall remain and be protected from damage. Cost shall be included in bid item "Site Clearing"



		R.F. Addition	
		LINE 1	
		Stormwater Drain Improvements	
<small>Baughman Company, P.A. 315 Ellis St. Wichita, KS 67211 P 316-262-7271 F 316-262-0149 ENGINEERING SURVEYING PLANNING LANDSCAPE ARCHITECTURE</small>			
PROJECT NUMBER 468-2019-085421	DESIGN AEG	DRAWN HW	DATE 04/13/20
REVISIONS:	APPROVED	SCALE Noted	SHEET
			2 OF 28