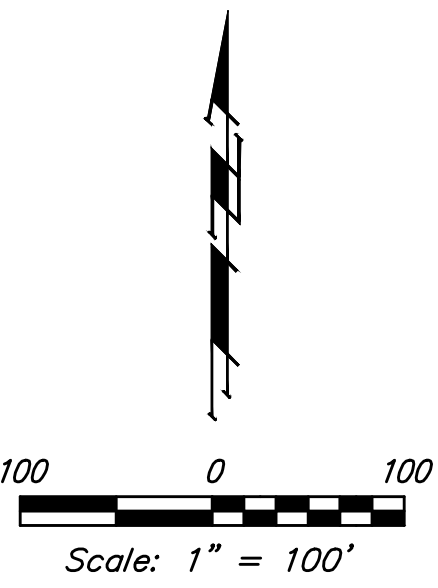
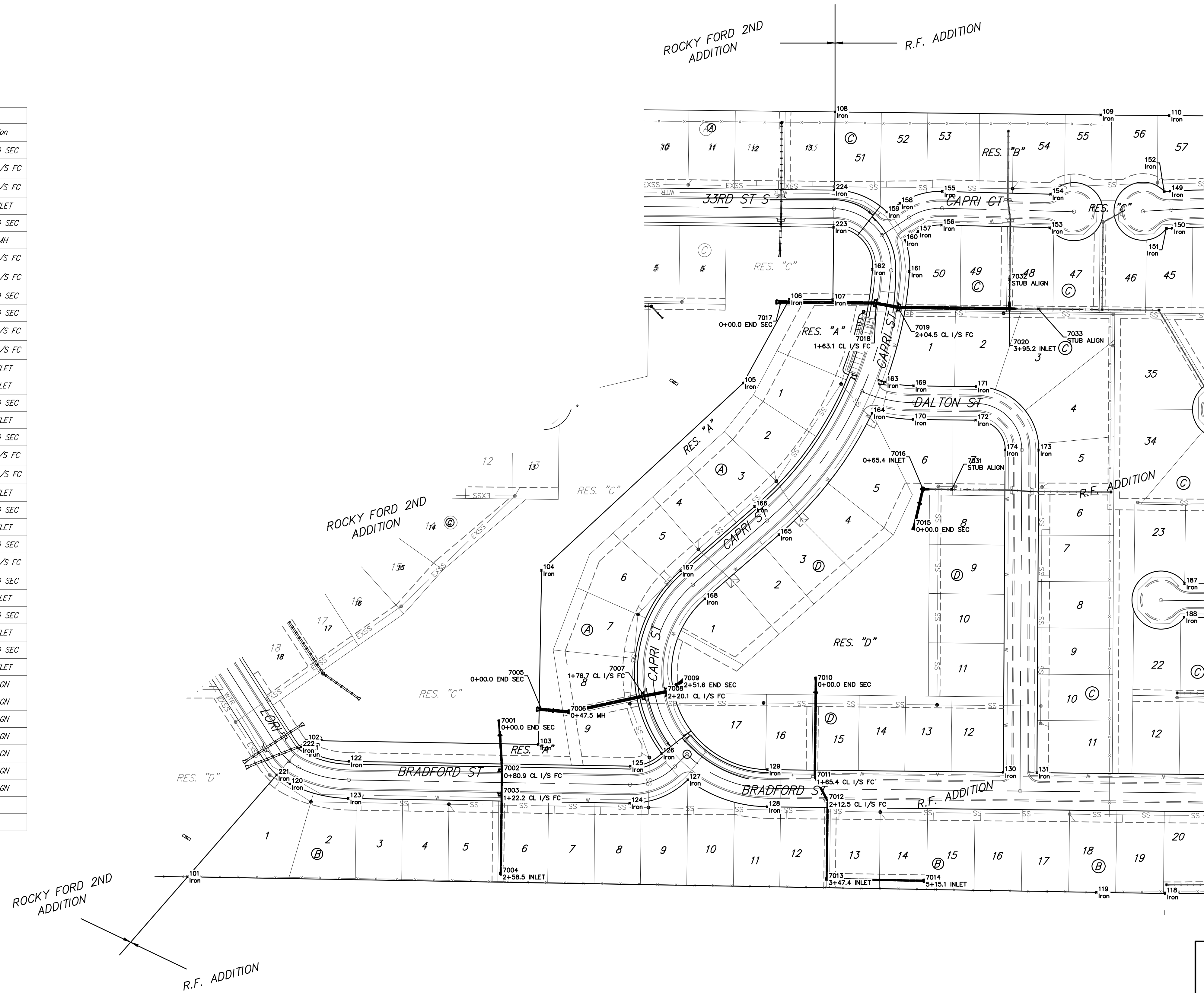


BENCHMARKS:

#1: "□" CUT CHISELED ON CURB,
15.2' S. OF SW COR., LOT 6,
BLOCK A, ROCKY FORD 2ND
ADDITION.
ELEV. = 1385.10 NAVD88

#2: "□" CUT CHISELED ON CURB,
8.6' N. & 11.7' W. OF SW COR.,
LOT 14, BLOCK C, ROCKY FORD
2ND ADDITION.
ELEV. = 1380.11 NAVD88

SWS POINTS			
Point #	Northing	Easting	Description
7001	20,248.19	11,473.65	0+00.0 END SEC
7002	20,165.97	11,478.39	0+80.9 CL 1/S FC
7003	20,127.63	11,477.73	1+22.2 CL 1/S FC
7004	19,989.80	11,476.21	2+58.5 INLET
7005	20,272.92	11,546.28	0+00.0 END SEC
7006	20,268.62	11,593.55	0+47.5 MH
7007	20,296.20	11,723.44	1+78.7 CL 1/S FC
7008	20,303.32	11,761.14	2+20.1 CL 1/S FC
7009	20,321.25	11,788.74	2+51.6 END SEC
7010	20,322.07	12,019.91	0+00.0 END SEC
7011	20,155.14	12,018.90	1+65.4 CL 1/S FC
7012	20,116.58	12,039.38	2+12.5 CL 1/S FC
7013	19,980.20	12,038.70	3+47.4 INLET
7014	19,977.33	12,206.38	5+15.1 INLET
7015	20,589.32	12,189.62	0+00.0 END SEC
7016	20,652.97	12,204.55	0+65.4 INLET
7017	20,975.87	11,959.37	0+00.0 END SEC
7018	20,973.74	12,123.95	1+63.1 CL 1/S FC
7019	20,966.72	12,161.64	2+04.5 CL 1/S FC
7020	20,964.35	12,353.89	3+95.2 INLET
7021	20,319.92	13,317.39	0+00.0 END SEC
7022	20,275.44	13,285.28	0+54.9 INLET
7023	20,195.85	13,469.51	0+00.0 END SEC
7024	20,146.25	13,435.45	0+59.1 CL 1/S FC
7025	20,017.37	13,536.11	0+00.0 END SEC
7026	19,974.35	13,442.71	1+02.8 INLET
7027	20,388.02	13,559.16	0+00.0 END SEC
7028	20,387.84	13,587.32	0+28.2 INLET
7029	20,558.22	13,535.49	0+00.0 END SEC
7030	20,587.42	13,535.83	0+29.2 INLET
7031	20,652.42	12,254.55	STUB ALIGN
7032	21,014.34	12,354.44	STUB ALIGN
7033	20,963.80	12,403.89	STUB ALIGN
7034	20,275.19	13,235.29	STUB ALIGN
7035	19,974.10	13,392.71	STUB ALIGN
7036	20,387.52	13,637.32	STUB ALIGN
7037	20,637.42	13,536.39	STUB ALIGN
7038	19,997.21	13,721.79	WER
7039	19,997.27	13,729.79	WER



	R.F. Addition	
	COORDINATES Stormwater Drain Improvements	
Baughman Company, P.A. 315 Ellis St. Wichita, KS 67211 P 316-262-7271 F 316-262-0149 ENGINEERING SURVEYING PLANNING LANDSCAPE ARCHITECTURE		
PROJECT NUMBER 468-2019-085421	DESIGN AEG	DRAWN HWJ
REVISIONS:	APPROVED	DATE 04/13/20
SCALE Noted		SHEET 26 OF 28