

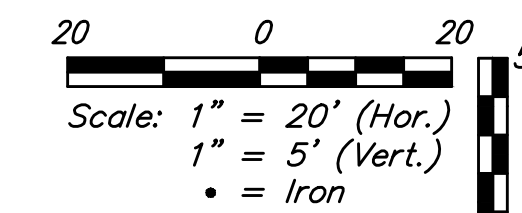
**BENCHMARKS:**

#1: "□" CUT CHISELED ON CURB,  
15.2' S. OF SW COR., LOT 6,  
BLOCK A, ROCKY FORD 2ND  
ADDITION.  
ELEV. = 1385.10 NAVD88

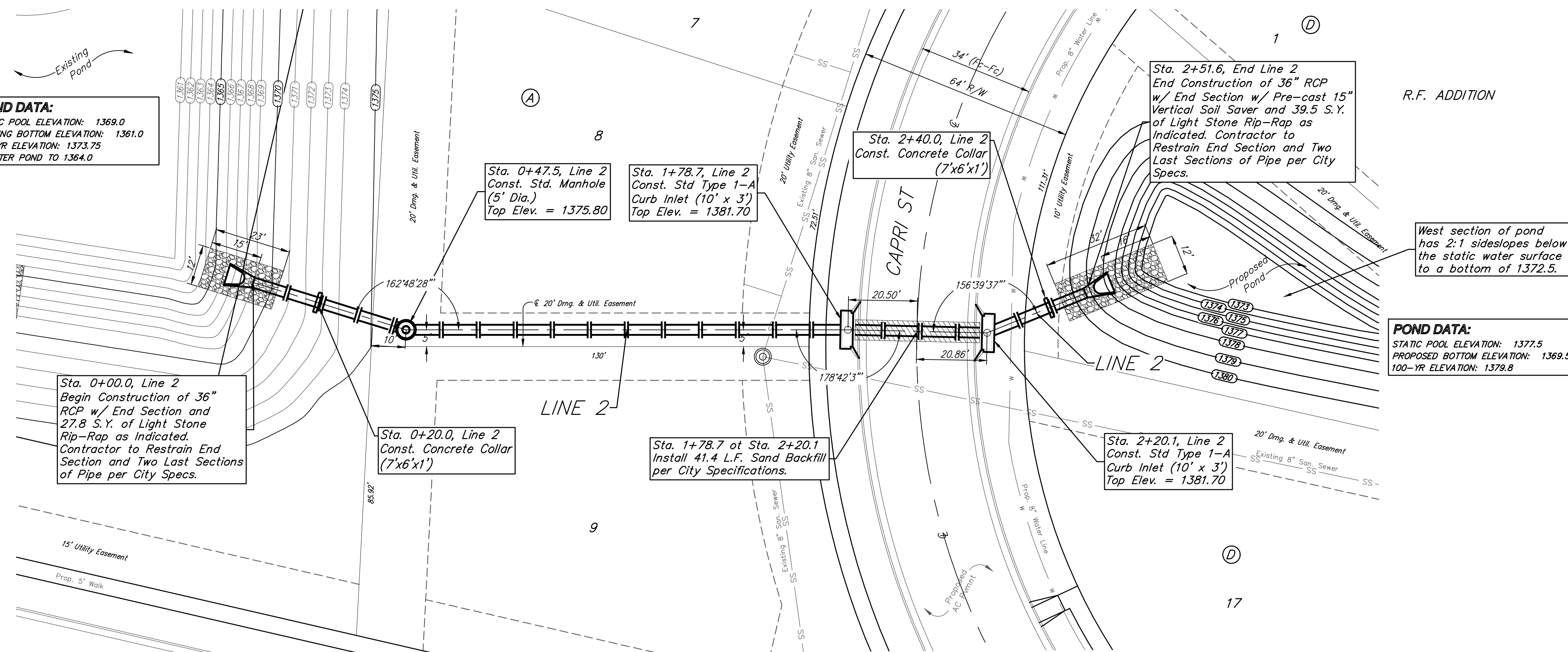
#2: "□" CUT CHISELED ON CURB,  
8.6' N. & 11.7' W. OF SW COR.,  
LOT 14, BLOCK C, ROCKY FORD  
2ND ADDITION.  
ELEV. = 1380.11 NAVD88

**POND DATA:**  
STATIC POOL ELEVATION: 1369.0  
EXISTING BOTTOM ELEVATION: 1361.0  
100-YR ELEVATION: 1373.75  
DEWATER POND TO 1364.0

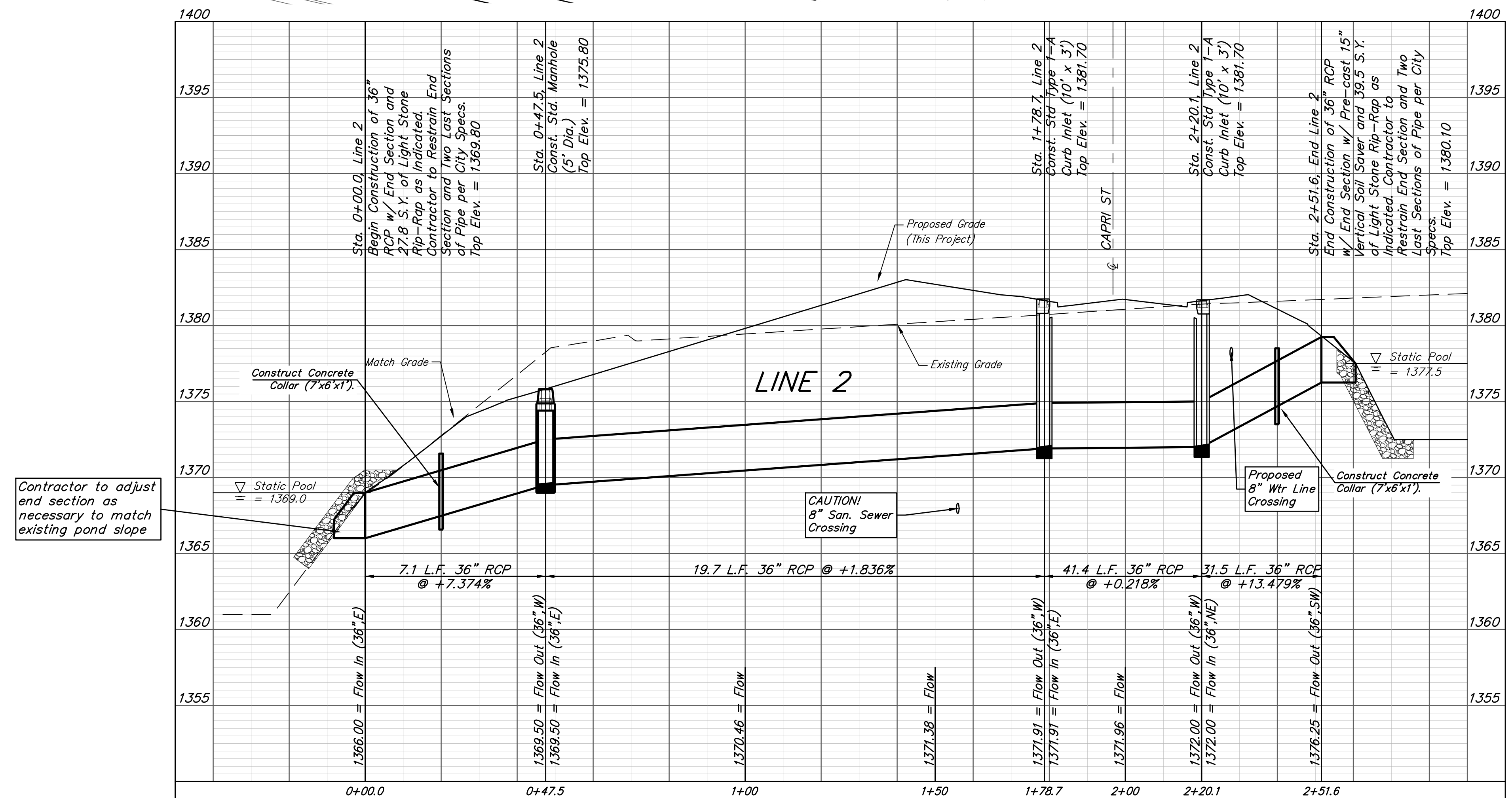
R.F. ADDITION



R.F. ADDITION



**POND DATA:**  
STATIC POOL ELEVATION: 1377.5  
PROPOSED BOTTOM ELEVATION: 1369.5  
100-YR ELEVATION: 1379.8



Contractor to adjust end section as necessary to match existing pond slope

CAUTION!  
8" San. Sewer Crossing

		R.F. Addition	
		<b>LINE 2</b>	
Stormwater Drain Improvements		Baughman Company, P.A. 315 Ellis St. Wichita, KS 67211 P 316-262-7271 F 316-262-0149	
ENGINEERING   SURVEYING   PLANNING   LANDSCAPE ARCHITECTURE		PROJECT NUMBER 468-2019-085421	
DESIGN AEG		DRAWN HW	
APPROVED		DATE 04/13/20	
REVISIONS:		SCALE Noted	
		SHEET	
		<b>3 OF 28</b>	