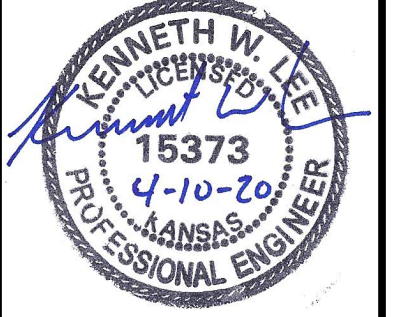




© 2018 GARVER, LLC
 THIS DOCUMENT, ALONG WITH THE IDEAS AND DESIGNS CONVEYED HEREIN, SHALL BE CONSIDERED INSTRUMENTS OF PROFESSIONAL SERVICE AND ARE PROPERTY OF GARVER, LLC. ANY USE, REPRODUCTION, OR DISTRIBUTION OF THIS DOCUMENT, ALONG WITH THE IDEAS AND DESIGN CONTAINED HEREIN, IS PROHIBITED UNLESS AUTHORIZED IN WRITING BY GARVER, LLC OR EXPLICITLY ALLOWED IN THE GOVERNING PROFESSIONAL SERVICES AGREEMENT FOR THIS WORK.



REV.	DATE	DESCRIPTION	BY



CITY OF WICHITA
 WICHITA, KANSAS
 Proj. No. 448-2019-017750
 OCA W9023
 MADISON AND
 MURDOCK WATER
 MAIN REPLACEMENT
 (GROUP B)

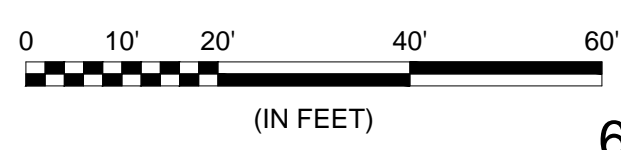
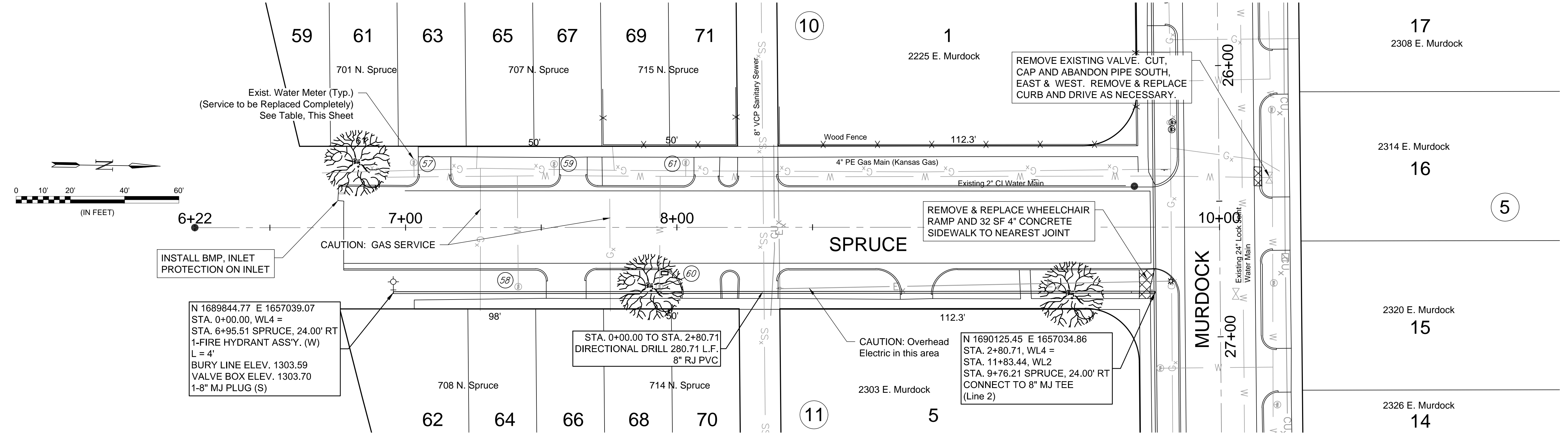
Line 4

JOB NO.: 18267614
 DATE: July 19
 DESIGNED BY: KWL
 DRAWN BY: KWL

BAR IS ONE INCH ON ORIGINAL DRAWING
 IF NOT ONE INCH ON THIS SHEET, ADJUST SCALES ACCORDINGLY.

DRAWING NUMBER

SHEET NUMBER **11** OF **13**



INSTALL BMP, INLET PROTECTION ON INLET

N 1689844.77 E 1657039.07
 STA. 0+00.00, WL4 =
 STA. 6+95.51 SPRUCE, 24.00' RT
 1-FIRE HYDRANT ASS'Y. (W)
 L = 4'
 BURY LINE ELEV. 1303.59
 VALVE BOX ELEV. 1303.70
 1-8" MJ PLUG (S)

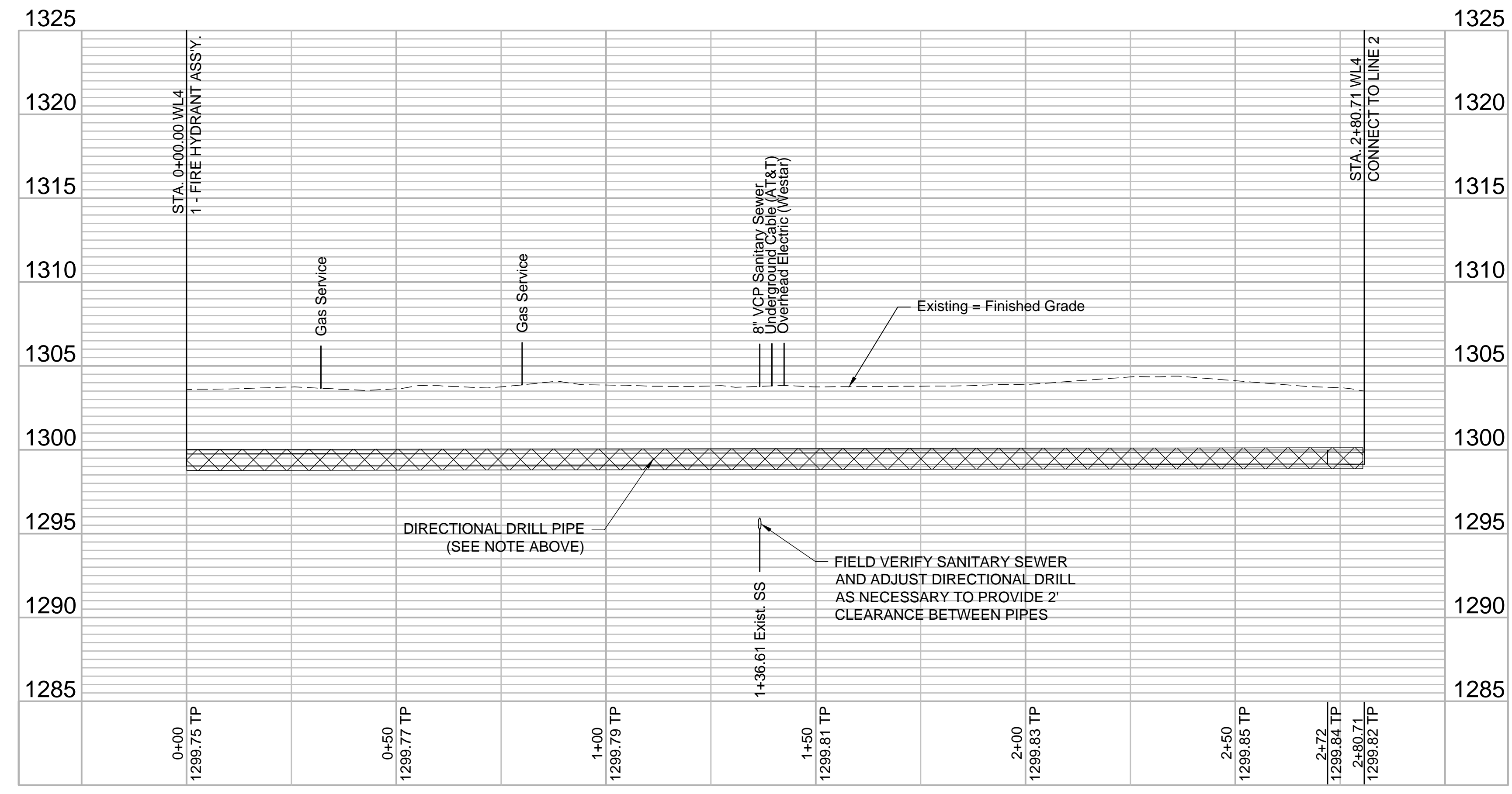
STA. 0+00.00 TO STA. 2+80.71
 DIRECTIONAL DRILL 280.71 L.F.
 8" RJ PVC

N 1690125.45 E 1657034.86
 STA. 2+80.71, WL4 =
 STA. 11+83.44, WL2
 STA. 9+76.21 SPRUCE, 24.00' RT
 CONNECT TO 8" MJ TEE
 (Line 2)

SIDEWALK & WHEELCHAIR RAMP REMOVE & REPLACE

- NOTES:
- Contractor to protect existing trees.
 - Where proposed water line crosses existing water line and other utilities, contractor to pothole crossings to ensure no conflicts prior to construction. Contractor to ensure 3.5' bury depth is maintained on all new water lines.
 - Removal & Replacement of Concrete Sidewalk, Pavement or Driveways shall be incidental to the Bid Items for 8" Pipe.
 - Quantities for removal of concrete items are For Information Only.

METER #	BL STATION	LT./RT.	SERVICE (LONG OR SHORT)	ADDRESS	AS BUILT
57	0+08	LT.	LONG	701 N. SPRUCE	
58	0+46	LT.	SHORT	708 N. SPRUCE	
59	0+59	LT.	LONG	707 N. SPRUCE	
60	0+98	LT.	SHORT	714 N. SPRUCE	
61	1+08	LT.	LONG	715 N. SPRUCE	



File: L:\2018\18267614 - Madison and Murdock Water Main\Drawings\C3D\Group B Plans\Water Line 4.dwg, Last Save: 4/12/2020 6:06 PM, Last saved by: KWL/lee
 Last plotted by: Lee, Ken W., Plot Style: ----, Plot Scale: 1:2,584.9, Plot Date: 4/12/2020 6:12 PM, Plotter used: None