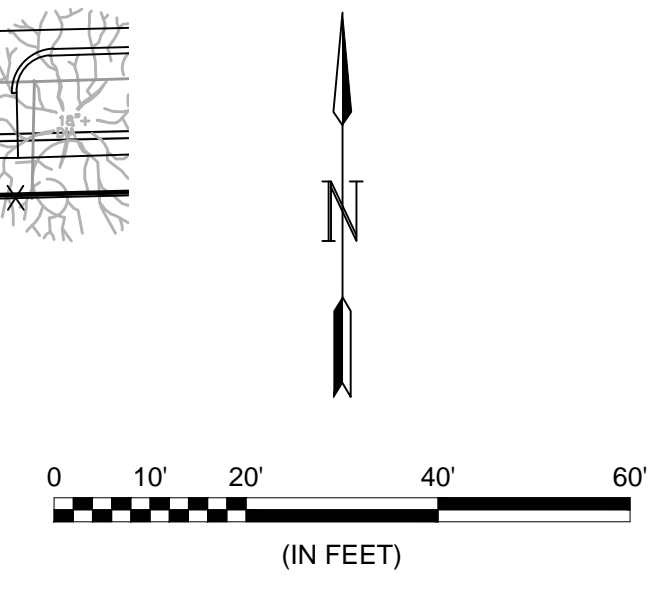
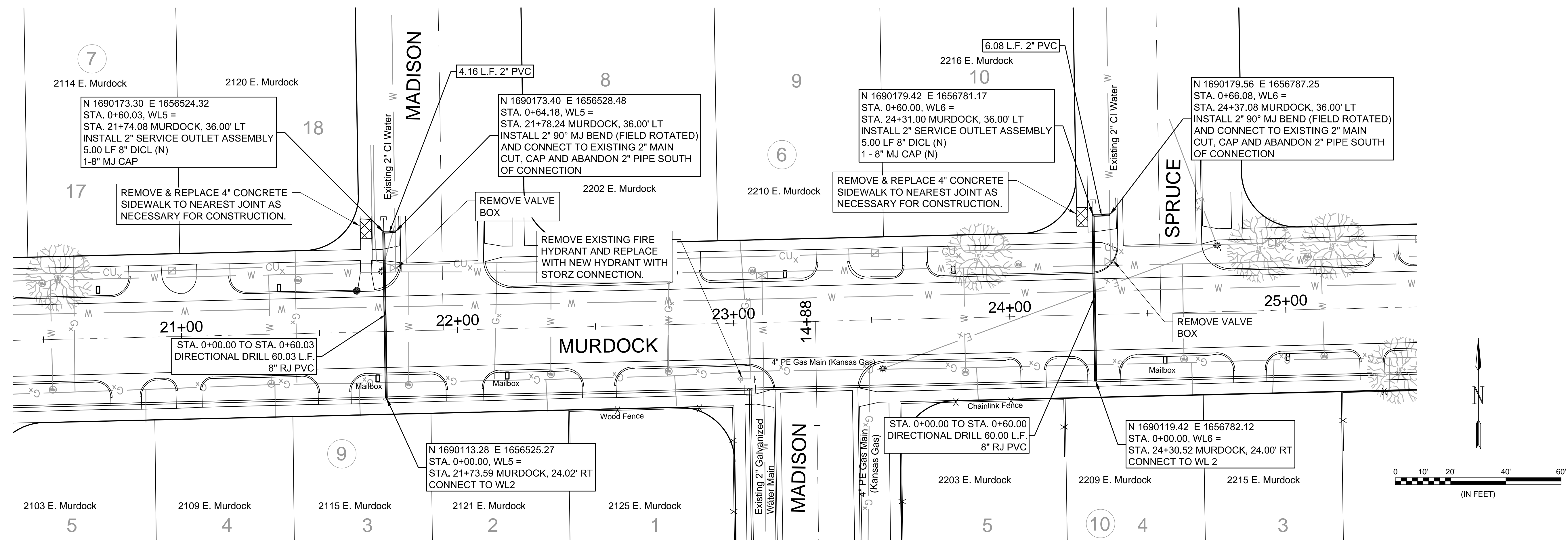


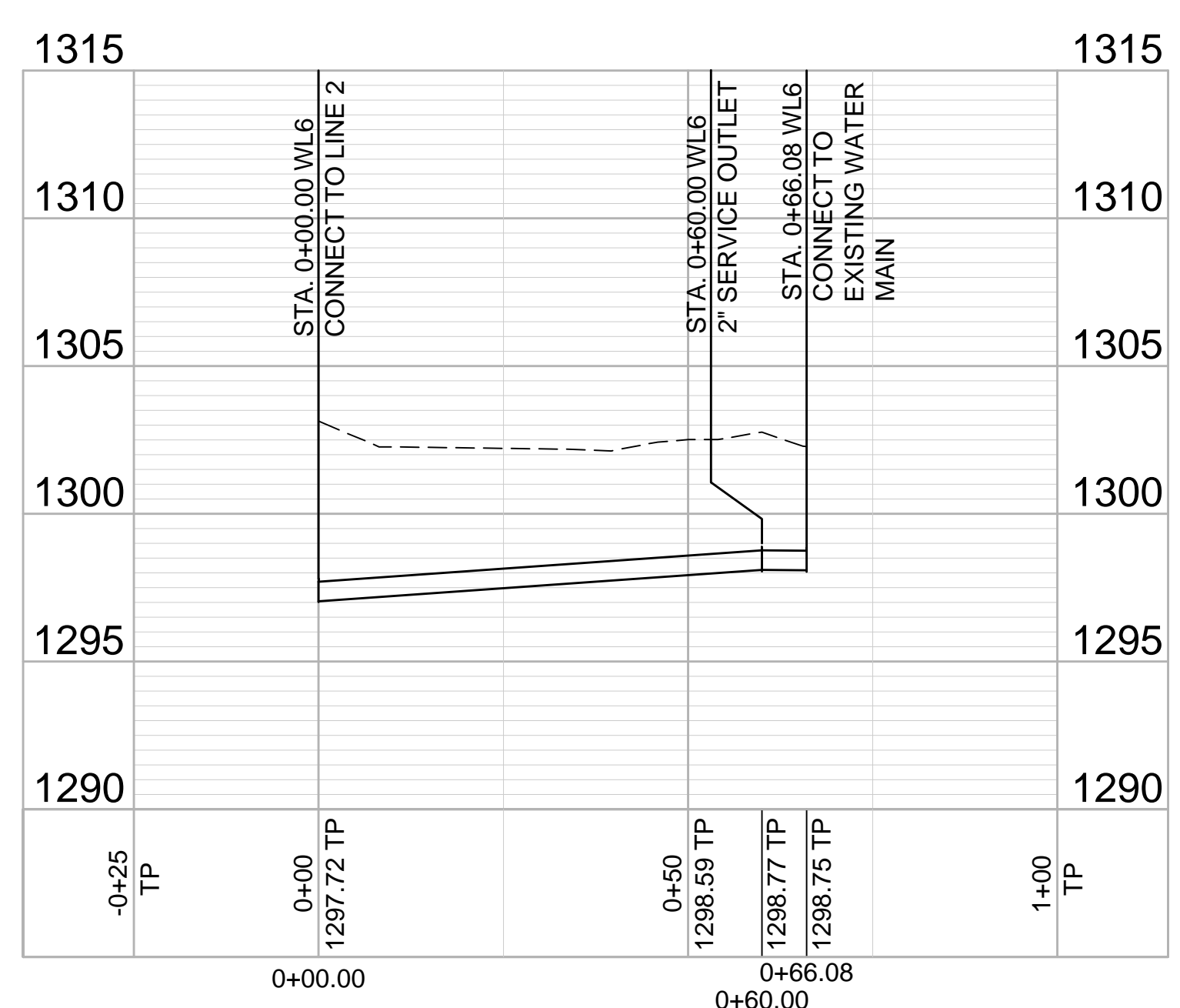
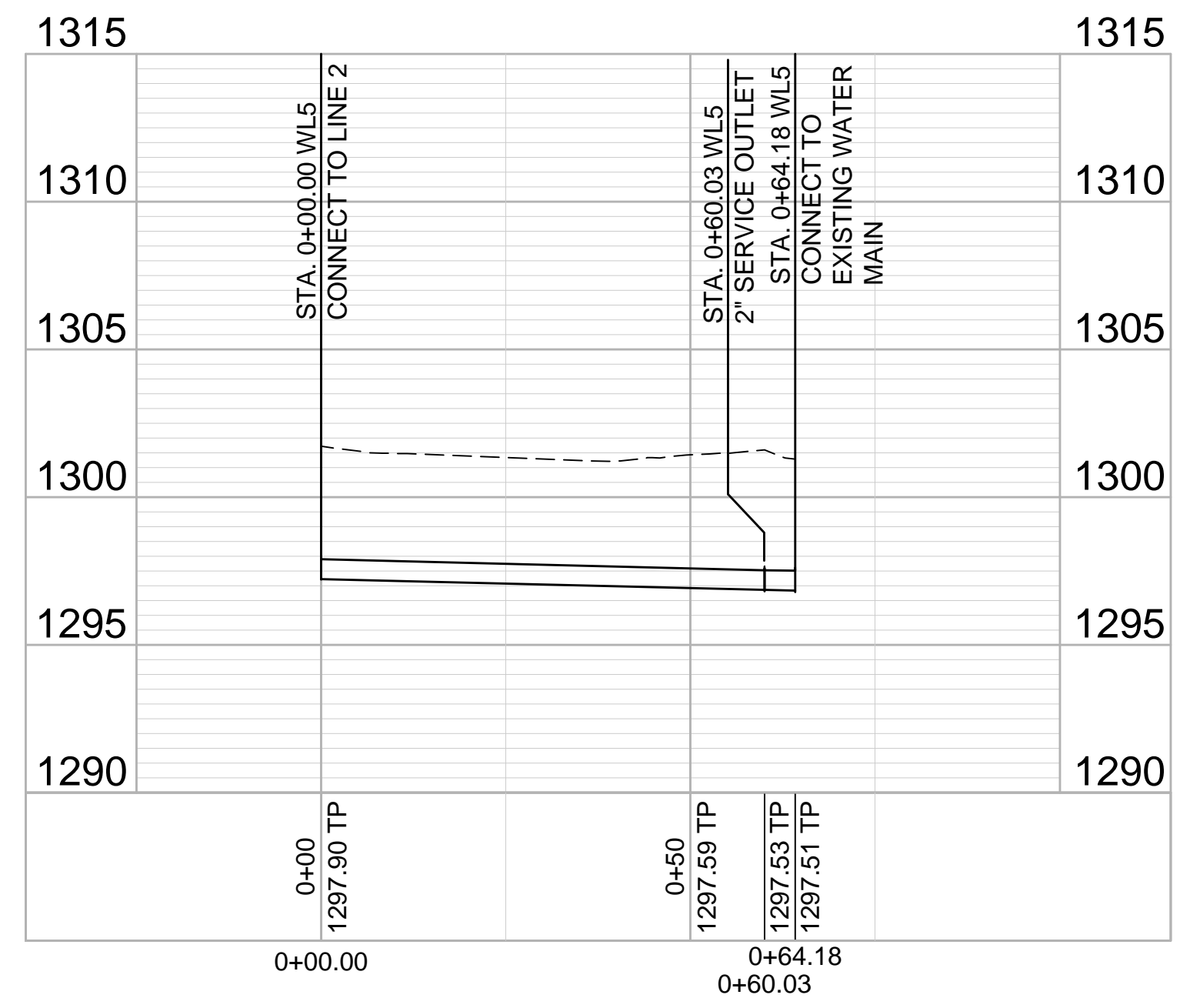


© 2018 GARVER, LLC
 THIS DOCUMENT, ALONG WITH THE IDEAS AND DESIGNS CONVEYED HEREIN, SHALL BE CONSIDERED INSTRUMENTS OF PROFESSIONAL SERVICE AND ARE PROPERTY OF GARVER, LLC. ANY USE, REPRODUCTION, OR DISTRIBUTION OF THIS DOCUMENT, ALONG WITH THE IDEAS AND DESIGN CONTAINED HEREIN, IS PROHIBITED UNLESS AUTHORIZED IN WRITING BY GARVER, LLC OR EXPLICITLY ALLOWED IN THE GOVERNING PROFESSIONAL SERVICES AGREEMENT FOR THIS WORK.



SIDEWALK & WHEELCHAIR RAMP REMOVE & REPLACE

- NOTES:
- Contractor to protect existing trees.
 - Where proposed water line crosses existing water line and other utilities, contractor to pothole crossings to ensure no conflicts prior to construction. Contractor to ensure 3.5' bury depth is maintained on all new water lines.
 - Removal & Replacement of Concrete Sidewalk, Pavement or Driveways shall be incidental to the Bid Items for 8" Pipe.
 - Quantities for removal of concrete items are For Information Only.
 - The cost for cut, capping and abandoning the existing lines and valves shall be incidental to the bid item for Site Clearing.



File: L:\2018\18267614 - Madison and Murdock Water Main\Drawings\C3D\Group B Plans\Water Line 5 and 6.dwg Last Save: 4/12/2020 6:06 PM Last saved by: KWLee
 Last plotted by: Lee, Ken W. Plot Style: Plot Scale: 1:2,565 Plot Date: 4/12/2020 6:12 PM Plotter used: None

REV.	DATE	DESCRIPTION	BY



CITY OF WICHITA
 WICHITA, KANSAS
 Proj. No. 448-2019-017750
 OCA W9023
 MADISON AND MURDOCK WATER MAIN REPLACEMENT (GROUP B)

Lines 5 & 6

JOB NO.: 18267614
 DATE: APRIL 2020
 DESIGNED BY: #
 DRAWN BY: #

BAR IS ONE INCH ON ORIGINAL DRAWING
 IF NOT ONE INCH ON THIS SHEET, ADJUST SCALES ACCORDINGLY.

DRAWING NUMBER
 #

SHEET NUMBER **12** OF **13**