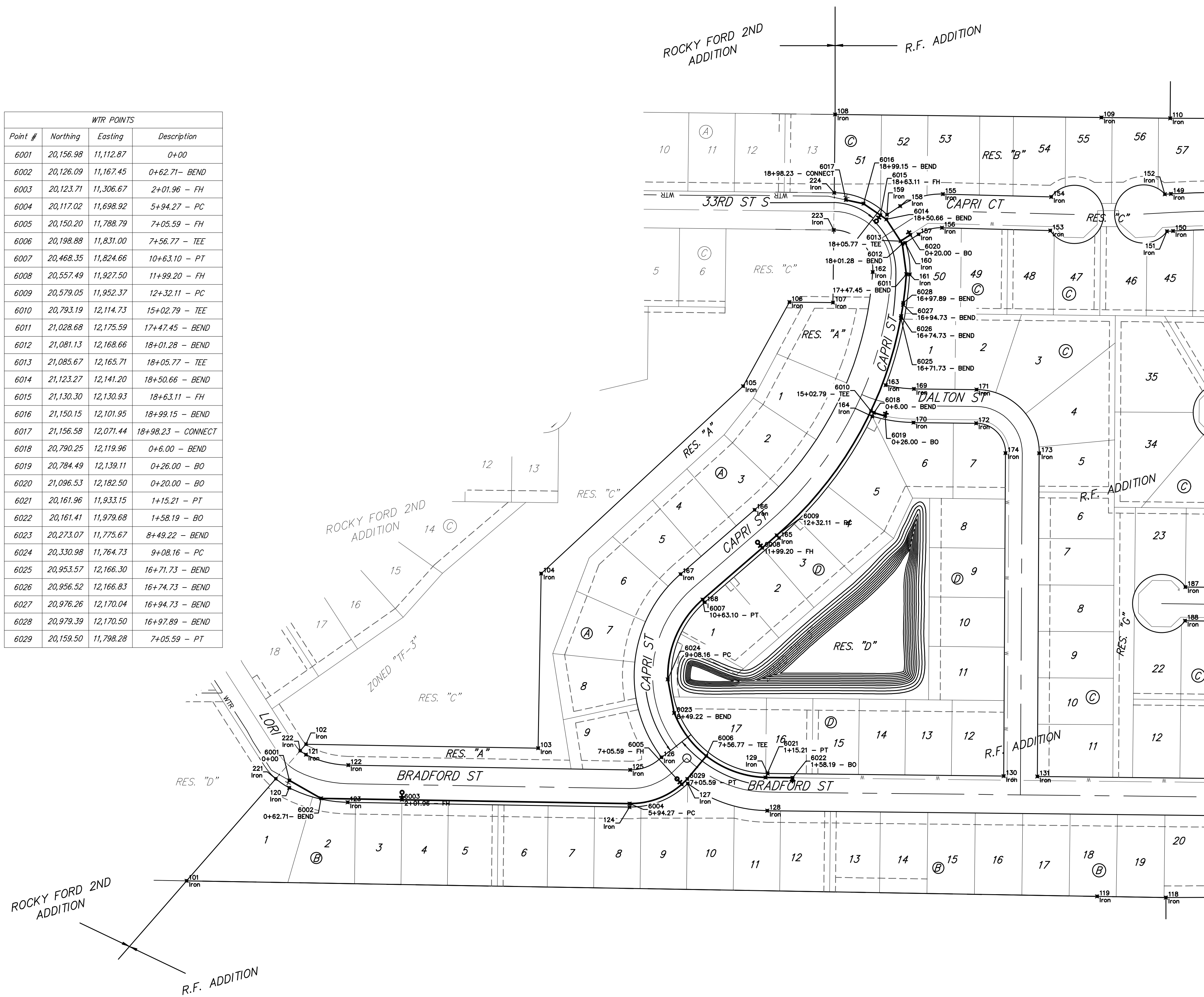


BENCHMARKS:

#1: "□" CUT CHISELED ON CURB,
15.2' S. OF SW COR., LOT 6,
BLOCK A, ROCKY FORD 2ND
ADDITION.
ELEV. = 1385.10 NAVD88

#2: "□" CUT CHISELED ON CURB,
8.6' N. & 11.7' W. OF SW COR.,
LOT 14, BLOCK C, ROCKY FORD
2ND ADDITION.
ELEV. = 1380.11 NAVD88

Point #	Northing	Easting	Description
6001	20,156.98	11,112.87	0+00
6002	20,126.09	11,167.45	0+62.71 - BEND
6003	20,123.71	11,306.67	2+01.96 - FH
6004	20,117.02	11,698.92	5+94.27 - PC
6005	20,150.20	11,788.79	7+05.59 - FH
6006	20,198.88	11,831.00	7+56.77 - TEE
6007	20,468.35	11,824.66	10+63.10 - PT
6008	20,557.49	11,927.50	11+99.20 - FH
6009	20,579.05	11,952.37	12+32.11 - PC
6010	20,793.19	12,114.73	15+02.79 - TEE
6011	21,028.68	12,175.59	17+47.45 - BEND
6012	21,081.13	12,168.66	18+01.28 - BEND
6013	21,085.67	12,165.71	18+05.77 - TEE
6014	21,123.27	12,141.20	18+50.66 - BEND
6015	21,130.30	12,130.93	18+63.11 - FH
6016	21,150.15	12,101.95	18+99.15 - BEND
6017	21,156.58	12,071.44	18+98.23 - CONNECT
6018	20,790.25	12,119.96	0+6.00 - BEND
6019	20,784.49	12,139.11	0+26.00 - BO
6020	21,096.53	12,182.50	0+20.00 - BO
6021	20,161.96	11,933.15	1+15.21 - PT
6022	20,161.41	11,979.68	1+58.19 - BO
6023	20,273.07	11,775.67	8+49.22 - BEND
6024	20,330.98	11,764.73	9+08.16 - PC
6025	20,953.57	12,166.30	16+71.73 - BEND
6026	20,956.52	12,166.83	16+74.73 - BEND
6027	20,976.26	12,170.04	16+94.73 - BEND
6028	20,979.39	12,170.50	16+97.89 - BEND
6029	20,159.50	11,798.28	7+05.59 - PT



	R.F. Addition - Phase I	
	COORDINATES Water Distribution System	
Baughman Company, P.A. 313 Ellis St. Wichita, KS 67211 P 316-262-7271 F 316-262-0149 ENGINEERING SURVEYING PLANNING LANDSCAPE ARCHITECTURE		
PROJECT NUMBER 448-2019-005513	DESIGN AEG	DRAWN HW
REVISIONS:	APPROVED DATE 4/27/20	SCALE Noted
		SHEET 14 OF 16