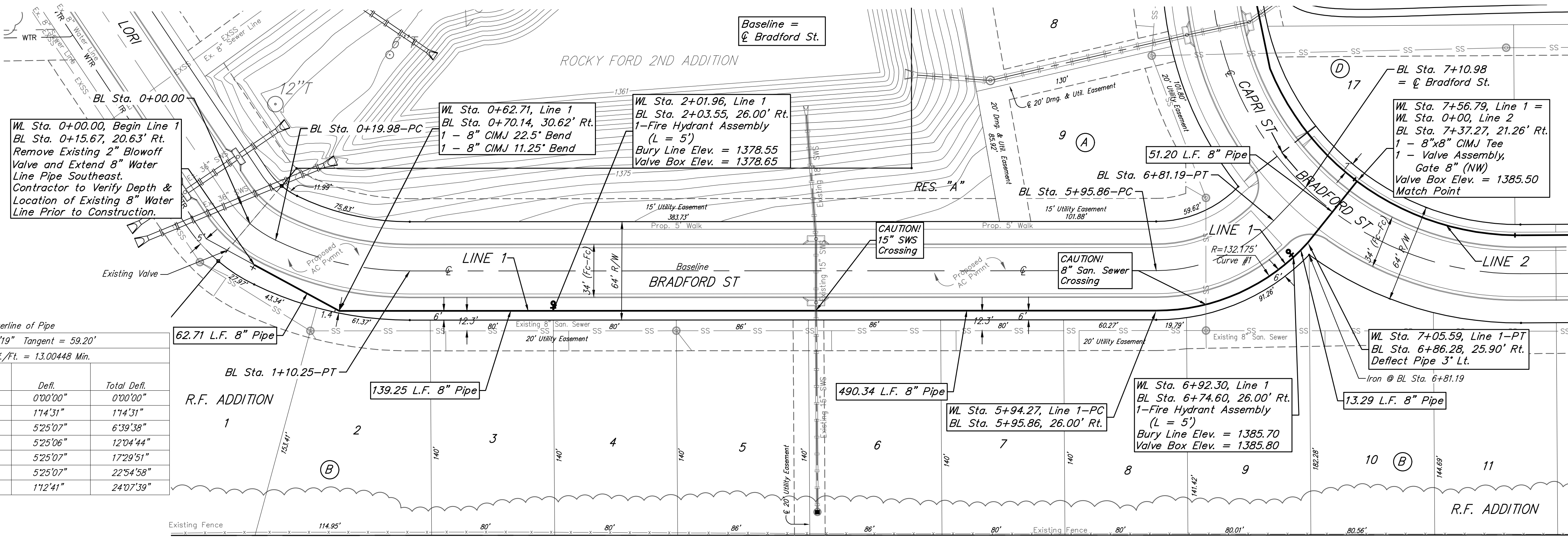


BENCHMARKS:
 #1: "□" CUT CHISELED ON CURB, 15.2' S. OF SW COR., LOT 6, BLOCK A, ROCKY FORD 2ND ADDITION. ELEV. = 1385.10 NAVD88
 #2: "□" CUT CHISELED ON CURB, 8.6' N. & 11.7' W. OF SW COR., LOT 14, BLOCK C, ROCKY FORD 2ND ADDITION. ELEV. = 1380.11 NAVD88

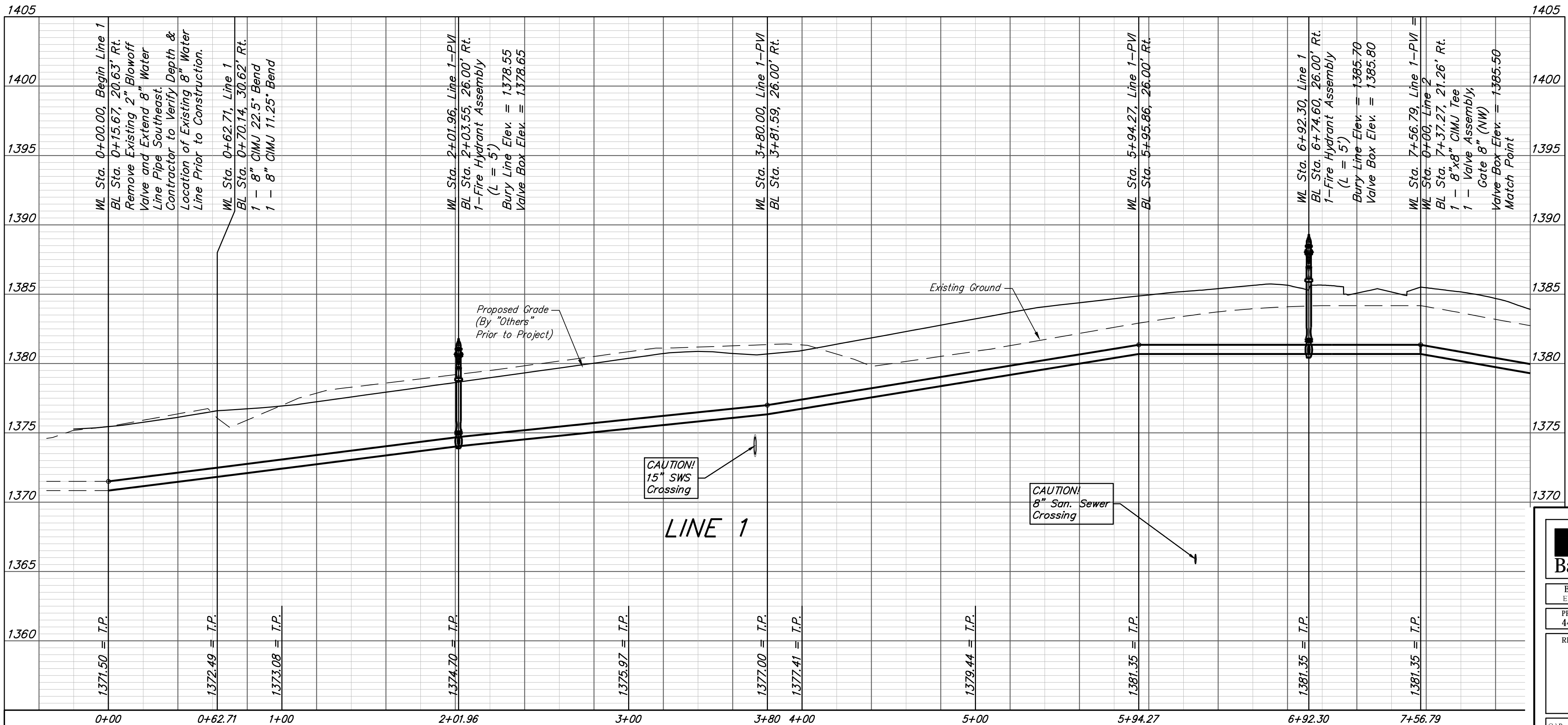
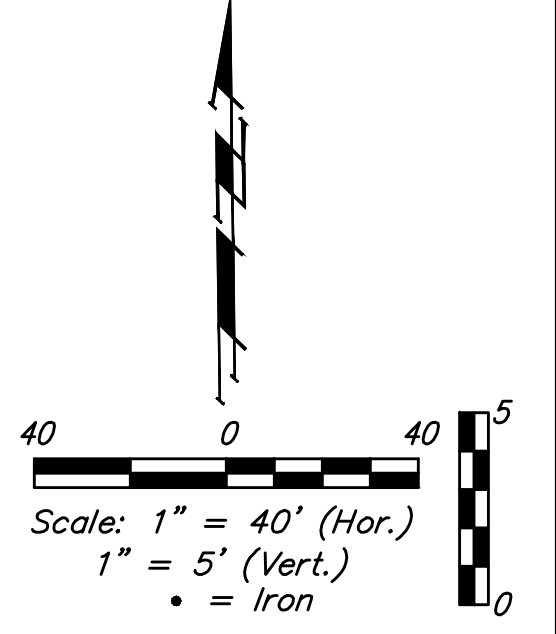


Curve #1
 Curve Data Based on Centerline of Pipe
 Rad. = 132.175' Delta = 48°15'19" Tangent = 59.20'
 Arc = 111.32' L.C. = 108.06' Def./Ft. = 13.00448 Min.

Station	Arc	Chord 8' Left	Defl.	Total Defl.
5+94.27	-	-	0°00'00"	0°00'00"
6+00.00	5.73'	6.81'	1°14'31"	1°14'31"
6+25.00	25.00'	29.68'	5°25'07"	6°39'38"
6+50.00	25.00'	29.68'	5°25'06"	12°04'44"
6+75.00	25.00'	29.68'	5°25'07"	17°29'51"
7+00.00	25.00'	29.68'	5°25'07"	22°54'58"
7+05.59	5.59'	6.65'	1°12'41"	24°07'39"

NOTE: Maintain 10 ft. of horizontal separation (outside dimension to outside dimension) between the water lines and sanitary sewer lines and manholes.

For Radii Under 200' Contractor to Use Short Pipe Lengths



Baughman R.F. Addition - Phase I
LINE 1
 Water Distribution System

Baughman Company, P.A. 315 Ellis St. Wichita, KS 67211 P 316-262-7271 F 316-262-0149
 ENGINEERING | SURVEYING | PLANNING | LANDSCAPE ARCHITECTURE

PROJECT NUMBER: 448-2019-005513
 DESIGN: AEG DRAWN: HW
 APPROVED: DATE: 4/27/20
 SCALE: Noted
 SHEET: 4 OF 16

REVISIONS:

C:\Projects\R.F.Addition_1802-P357\Engineering\Phase 1\WTR\WTR PLANS.dwg