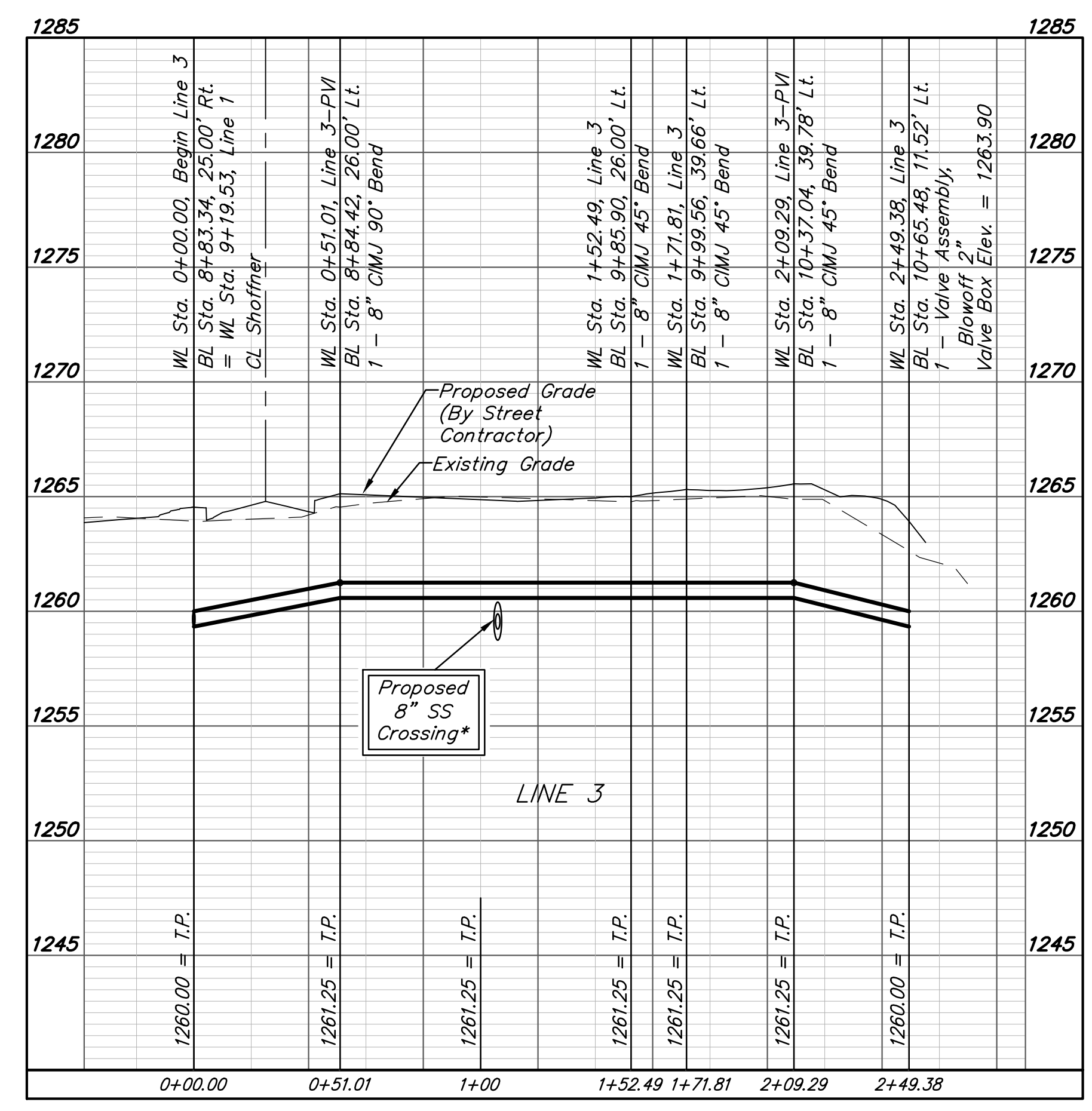
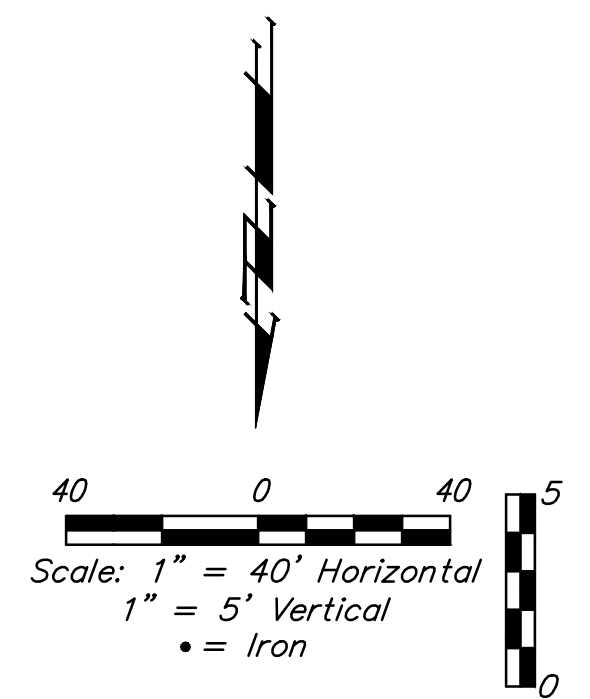
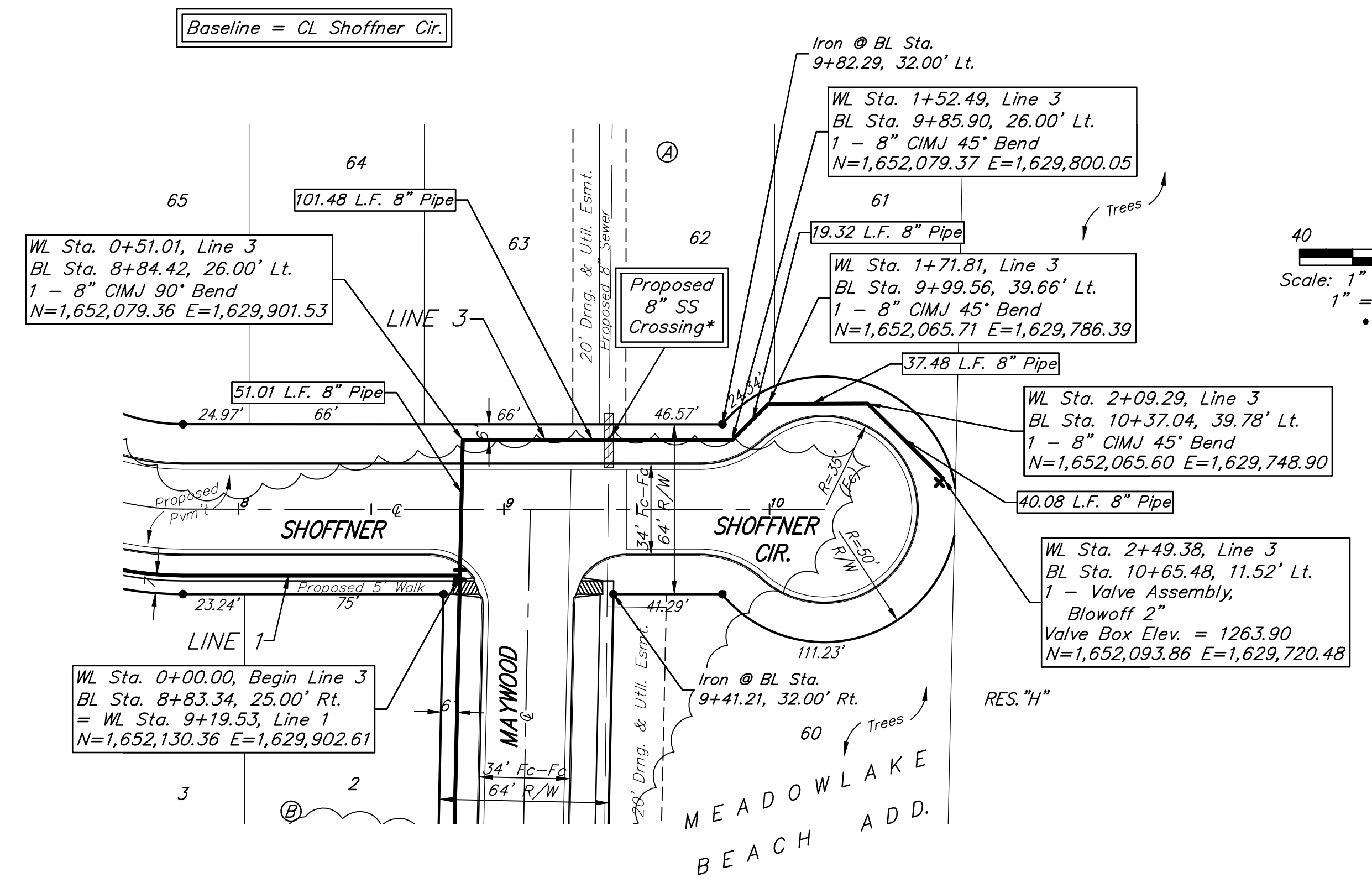


BENCHMARKS:
 BM #1 - City of Wichita Benchmark
 Disc, SE Corner of Clifton and 55th
 Street South, Southwest corner of
 RCBC, on top of hubguard at the
 West end.
 Elev. = 1263.91 NAVD88

BM #2 - "□" Cut on top of curb,
 north side of Shoffner, adjacent to
 SE corner of Lot 14 Block B,
 Meadowlake Beach Addition,
 Sedgwick County, Kansas.
 Elev. = 1264.80 NAVD88

Trees in conflict with water line
 construction to be removed by
 contractor. To be paid for as lump
 sum bid item "Site Clearing"

All other trees shall remain and be
 protected from damage during
 construction. Overhanging limbs shall
 be trimmed by the Contractor using a
 chain saw only as necessary for
 construction and with approval of the
 Engineer. Cost of tree trimming to be
 included in bid item "Site Clearing"



*Sewer has been
 constructed with
 concrete encasement

