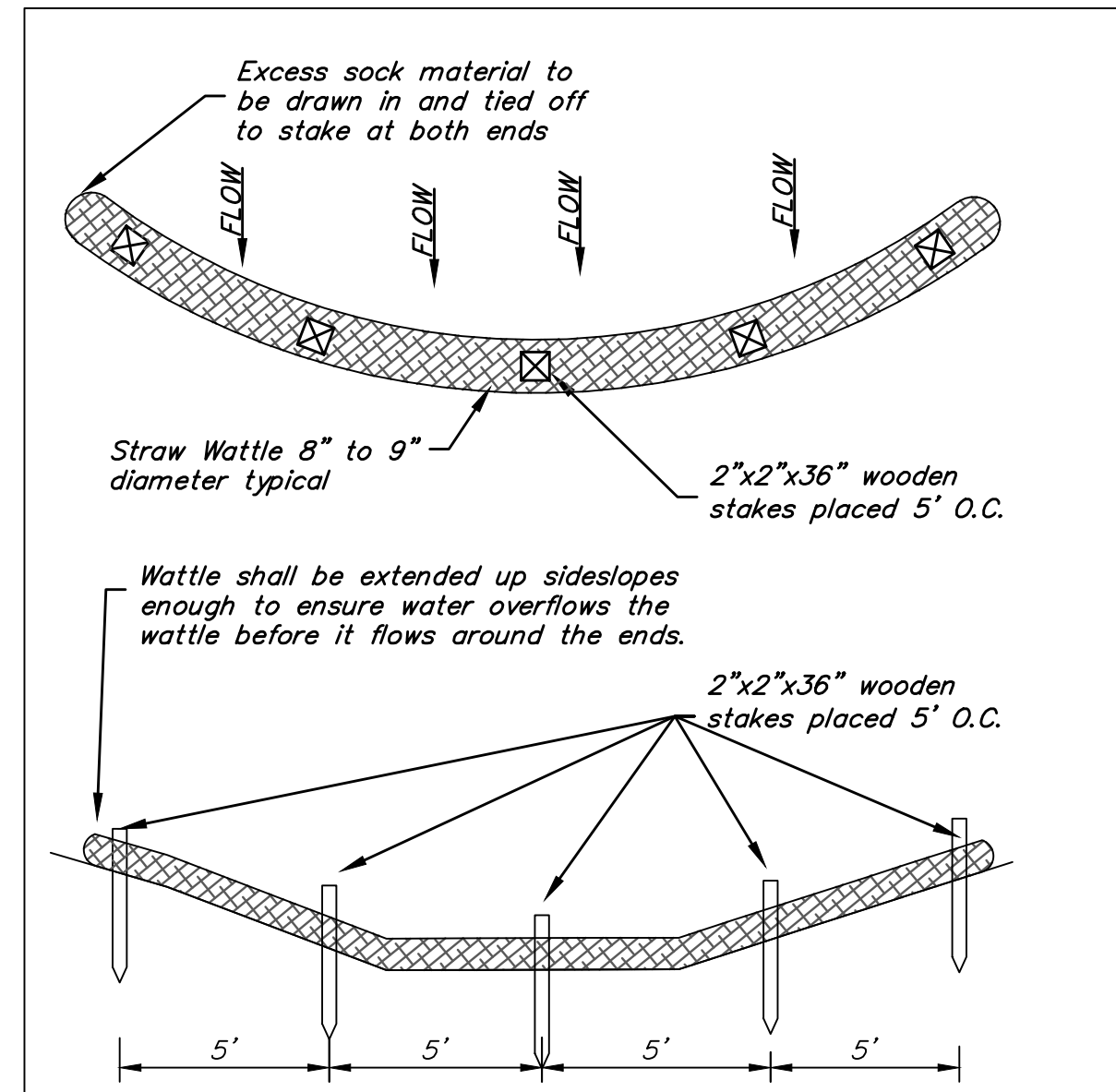


BENCHMARKS:

#1: "□" CUT CHISELED ON CURB,
15.2' S. OF SW COR., LOT 14,
BLOCK C, ROCKY FORD 2ND
ADDITION.
ELEV. = 1385.10 NAVD88

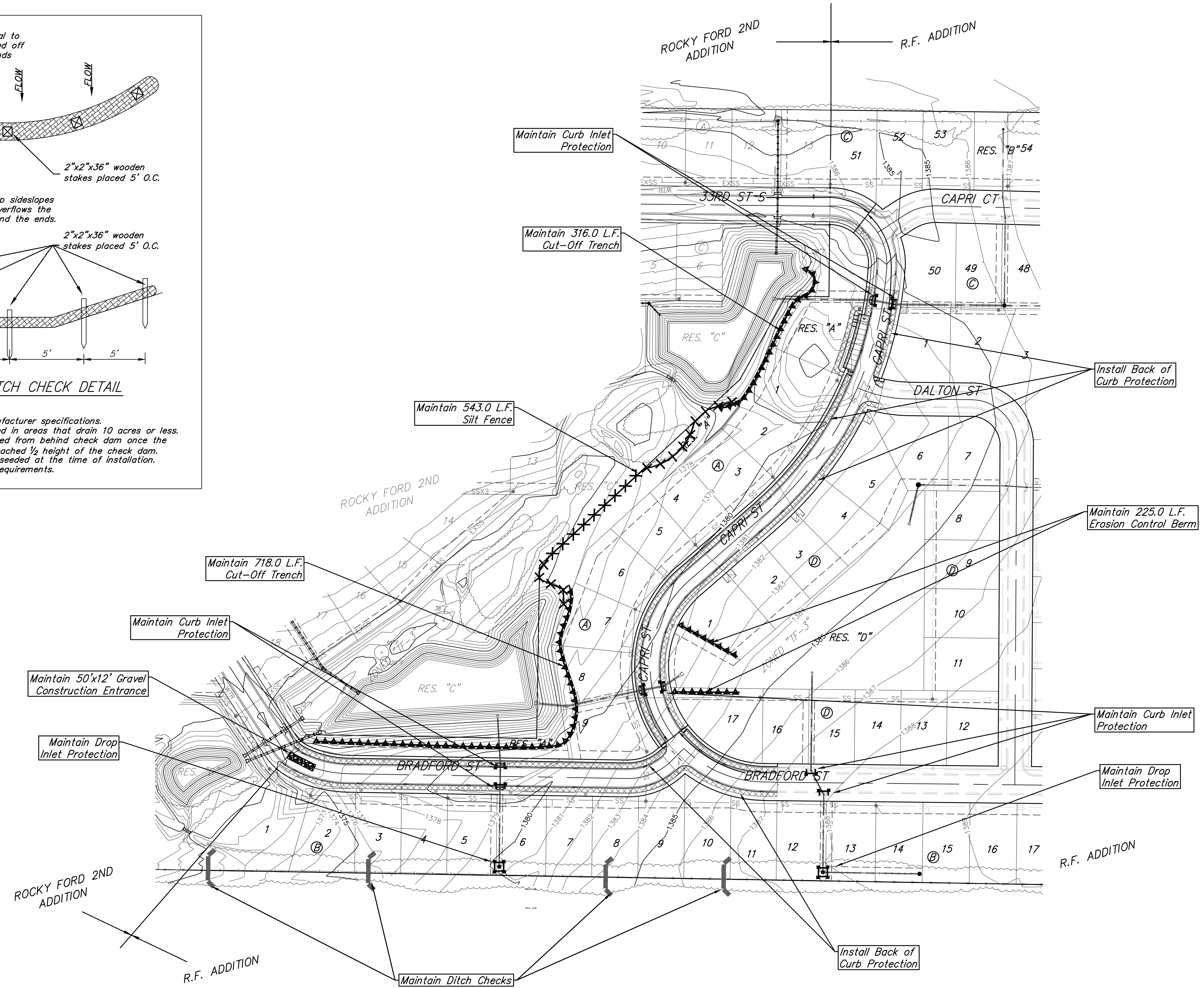
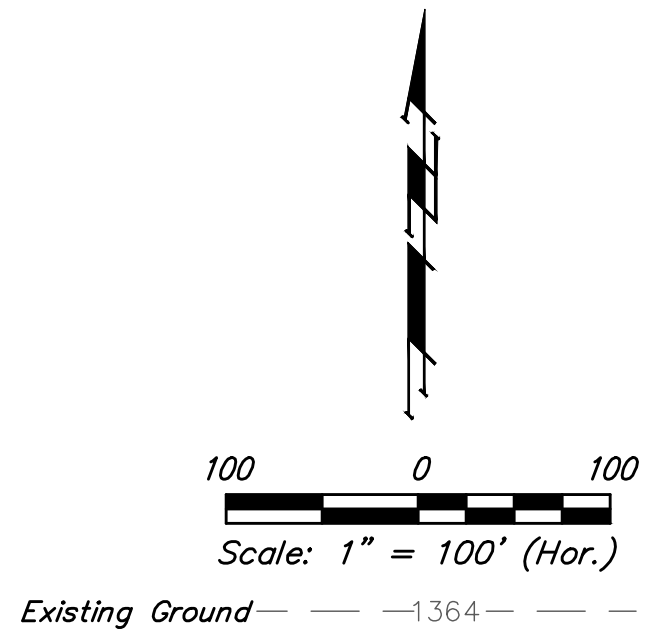
#2: "□" CUT CHISELED ON CURB,
8.6' N. & 11.7' W. OF SW COR.,
LOT 14, BLOCK C, ROCKY FORD
2ND ADDITION.
ELEV. = 1380.11 NAVD88



STRAW WATTLE DITCH CHECK DETAIL

NOTES:

1. All material to meet manufacturer specifications.
2. Ditch Check should be used in areas that drain 10 acres or less.
3. Sediment should be removed from behind check dam once the accumulated height has reached 1/2 height of the check dam.
4. Check dam can be direct seeded at the time of installation.
5. See Sheet X for spacing requirements.



EROSION CONTROL LEGEND

- DROP INLET PROTECTION
- CURB INLET PROTECTION
- DITCH CHECKS
- SILT FENCING
- CUT-OFF TRENCH
- BACK OF CURB PROTECTION

NOTES:

1. Contractor shall make sure all erosion control is in place before project is accepted. This plan represents the minimum standard. Any additional erosion control measures shall be installed by the Contractor as needed.
2. Removal of Gravel Construction Entrance for pavement construction shall be included in bid item "Site Clearing & Restoration"
3. This Plan is Not To Be Used As A Comprehensive Grading Plan. All Spot Elevations Are Proposed & Subject To Change.

All areas disturbed during construction shall be seeded, mulched, and fertilized as per Cover Sheet General Notes.

EROSION CONTROL MEASURE	INSTALL	MAINTAIN
CONSTRUCTION ENTRANCE (EA)	0	1
BACK OF CURB PROTECTION (LF)	3,641	0
SILT FENCE (LF)	0	543
DITCH CHECKS (EA)	0	4
CURB INLET PROTECTION (EA)	0	8
DROP INLET PROTECTION (EA)	0	2
EROSION CONTROL MAT (SY)	0	0
MULCH WATTLE SED. BARRIER (LF)	0	0
CUT-OFF TRENCH (LF)	0	1,259

* ALL EXISTING BMPs INCLUDING CONSTRUCTION ENTRANCE, SEDIMENT BARRIERS, SILT FENCE, CUT-OFF TRENCH, AND EROSION CONTROL MAT SHALL BE MAINTAINED AND REPAIRED IF NECESSARY.

Baughman R.F. Addition - Phase I
EROSION CONTROL
Street Improvements

Baughman Company, P.A. 315 Ellis St. Wichita, KS 67211 P 316-262-7271 F 316-262-0149
ENGINEERING | SURVEYING | PLANNING | LANDSCAPE ARCHITECTURE

PROJECT NUMBER 472-2019-085533	DESIGN AEG	DRAWN HW
REVISIONS:	APPROVED	DATE 05/11/20
	SCALE Noted	SHEET 13 OF 28

C:\Projects\R.F. Addition_1802P337\Engineering\Phase I\STR\STR PLANS.dwg