

GENERAL NOTES:

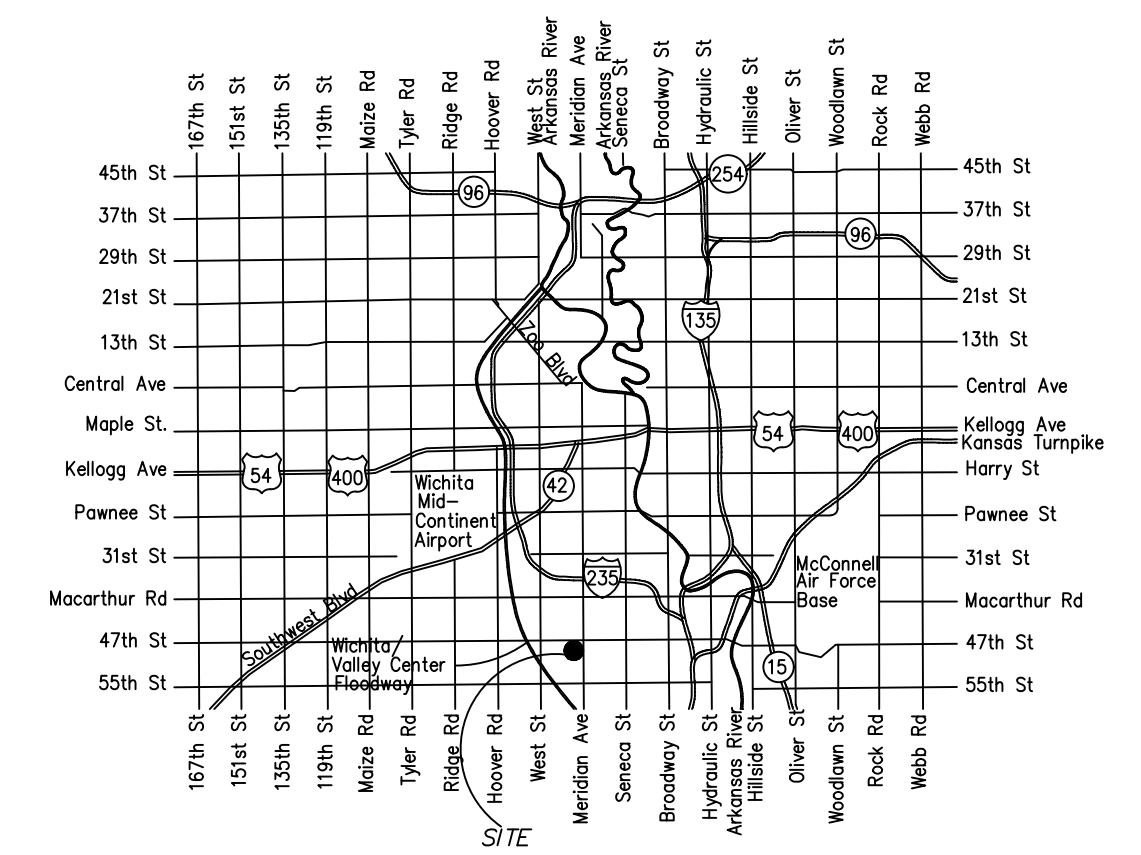
- The Contractor shall comply with all applicable safety regulations. All construction shall be completed following current City Standard Specifications and Special Provisions.
- Contractor will be required to provide notice to utility companies a minimum of seventy-two (72) hours prior to any excavation, as follows:
 Kansas One-Call 687-2470
 The Contractor must notify the following in case of an emergency:
 AT&T 1-800-246-8464
 Black Hills Energy 1-800-694-8999
 City of Wichita Water & Sewer 1-316-219-8921
 City of Wichita Stormwater 1-316-268-4090
 City of Wichita Traffic 1-316-268-4034
 Cox Communications 1-888-249-3530
 Kansas Gas Service 1-888-482-4950
 Westar Energy 1-800-544-4857
- Utility service lines, poles, etc. are to be adjusted as necessary by others prior to construction unless the plans specifically call for their adjustment by the Contractor or unless the plans specifically identify a utility to be adjusted by its owner during construction. Existing utilities and their location, as shown on the plans, represent the best information obtainable for design. The Contractor will be required to work around existing utilities within the right-of-way which do not conflict with proposed construction.
- Rubble from the removal of miscellaneous structures and excess excavation which is to be wasted shall be disposed of on sites to be provided by the Contractor. These sites shall be approved by the Engineer as to suitability, appearance and site location. Locations, in the opinion of the Engineer, that will leave an unsightly appearance will not be approved. All disposal sites must be approved by the Kansas Department of Health and Environment. Material either stockpiled or disposed of in a flood plain will require a Kansas State Board of Agriculture permit. Any material dumped in waters of the United States or wetlands is subject to U.S. Corps of Engineers permitting regulations. Any material buried or stockpiled beyond approved construction limits will require additional archaeological investigations unless buried in a previously approved borrow location.
- Trees and shrubs in public right-of-way which are in direct conflict with proposed new construction shall be removed by the Contractor with the City Engineer's approval. Trees and shrubs which are not in direct conflict with proposed new construction shall be saved and protected from damage.
- The Contractor shall give all property owners and/or tenants of developed property adjoining the construction of this project a minimum of ten (10) days notice prior to start of construction.
- The Contractor shall be responsible for preserving property irons. The Contractor will be required to re-establish any property irons which are damaged or destroyed by his construction operations. Such irons shall be re-established by a licensed land surveyor in accordance with state laws.
- The Engineering Division shall field locate water valves one time during construction when requested by the Contractor. It shall be the Contractor's responsibility to preserve such field locations during the construction process. Water valves, valve boxes or fire hydrants damaged during construction shall be repaired by Contractor at his own expense. Valve boxes and water meters within the project limits shall be adjusted to match final grades by the contractor.
- If traffic will be impacted by construction, a traffic control plan must be submitted and approved by the City Traffic Engineer, Brian Coon at traffic@wichita.gov before construction can begin. The Contractor shall be responsible for all traffic control measures to facilitate construction. All construction zone markings and signage shall conform to the latest version of the Manual on Uniform Traffic Control Devices (MUTCD) as published by the US Dept. of Transportation, Federal Highway Administration. All costs associated with construction markings and signage shall be the Contractors responsibility.
- All elevations shown are NAVD 88.
- All areas disturbed during construction that will not be under proposed pavement shall be restored to match existing conditions.

- Any sidewalk, drive approach, curb, or street pavement removed to construct project must have a pavement cut permit and be replaced by the City contractor. Permits can be obtained by calling 316-268-4501 or 316-268-4480.
- All applicable fees (tap, equity, in lieu of & main benefit) must be paid before any connections can be made on this project. Quotes can be obtained on fees by calling 316-268-4555.
- City Maintenance of sanitary sewer mains ends at last structure within the easement or right-of-way.
- All stubs and capped pipes shall be located with green plastic tape in the same manner as risers.
- Connecting to Existing Manholes: Prior to laying sewer lines using existing stubs in existing manholes, the Contractor shall expose and verify the elevation, grade and alignment of existing stubs and notify the Engineer of any deviation from the plans. Where the stub is unusable due to elevation grade or alignment, the Contractor shall remove the stub and plug the hole, and reshape the existing manhole invert to provide smooth flow. Where connecting to an existing manhole that does not have an existing stub, the Contractor shall core cut into existing manhole wall to make connection using approved water stop gasket, and reshape the existing manhole invert to provide smooth flow. The cost to connecting to existing manholes is incidental to the project.
- Contractor shall limit the extent of trench open overnight and weekends to less than 50 feet.
- Contractor shall provide positive drainage away from all manhole covers.
- The Contractor shall prevent any construction debris from entering the existing sanitary sewer during construction.
- The Contractor shall be responsible for maintaining continuous flow of sewage through construction. Contractors proposed method for maintaining sewage flow shall be submitted and approved by the Sewer Maintenance Division (316-268-4073) prior to starting and by-passing of sewage flows.
- Any over excavation from manhole and pipe removal shall be backfilled with AB-3 compacted to 90-95% ASTM D698.
- The Contractor shall protect from damage and support existing utilities through construction as approved by the utility owner and the Engineer at the contractors expense.
- Contractor shall be responsible for removal of existing trees as deemed necessary to complete the project. Estimated to be approximately 3 trees.

Lateral 570, SWI SANITARY SEWER Fox Run Addition CITY OF WICHITA, KANSAS

Gary Janzen, P.E. City Engineer
 Project Number: 468-85359
 OCA: 7444808

Apex Excavating - Contractor
 B. Woods - City of Wichita, Field Project Engineer
 T. Dvorak - City of Wichita, Inspector
 As-Built
 Stubs & Risers
 Release Date: 4/26/2019 (for connection purposes only)
 Completion Date: 2/8/2021
 pdf: 9/25/2019 apr



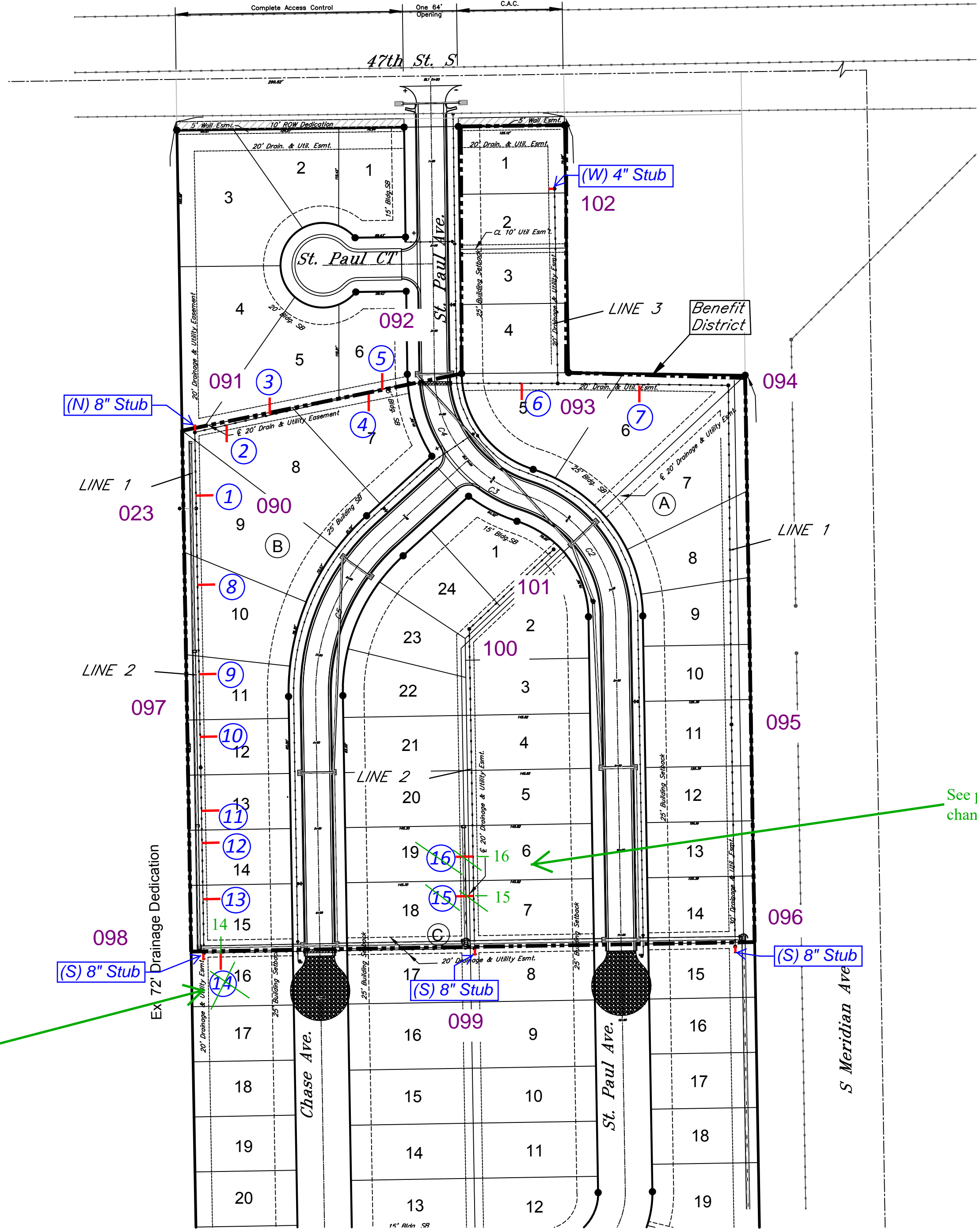
Vicinity Map

INDEX OF SHEETS:

- 1.0 Cover Sheet
- 2.0 Control Map
- 3.0-3.4 Plan and Profile Line 1
- 3.5-3.8 Plan and Profile Line 2
- 3.9 Plan and Profile Line 3
- 4.0-4.1 Std. Manhole Details
- 5.0 Erosion Control Plan
- 5.1-5.5 Erosion Control BMP Details
- 6.0 Plat

Benchmarks

City of Wichita Disc-44' N. & 30' E. of the Centerline of 47th Street S. and Meridian.
 Elev. = 1279.63 NAVD88
 Storm Water MH-69.6' N. of the Lot 3, Block B.
 Elev. = 1281.64 NAVD88

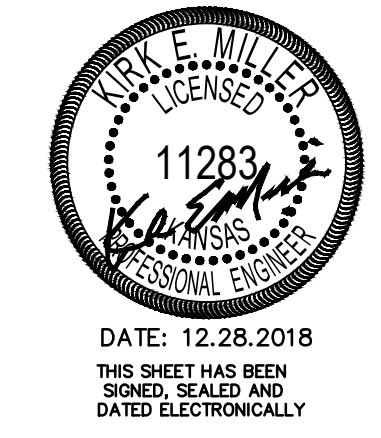


Mile Section # 5241

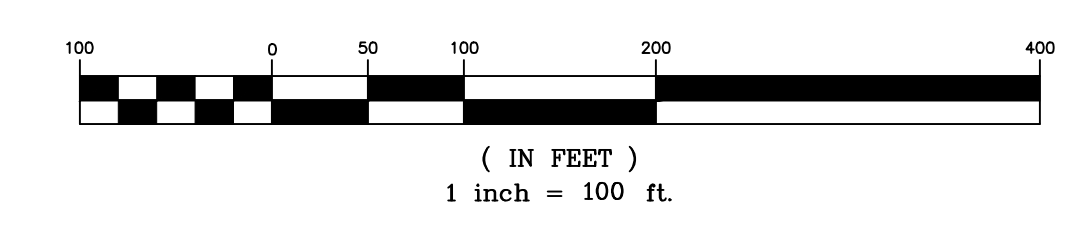
See plan sheet for changes - LML

See plan sheet for changes - LML

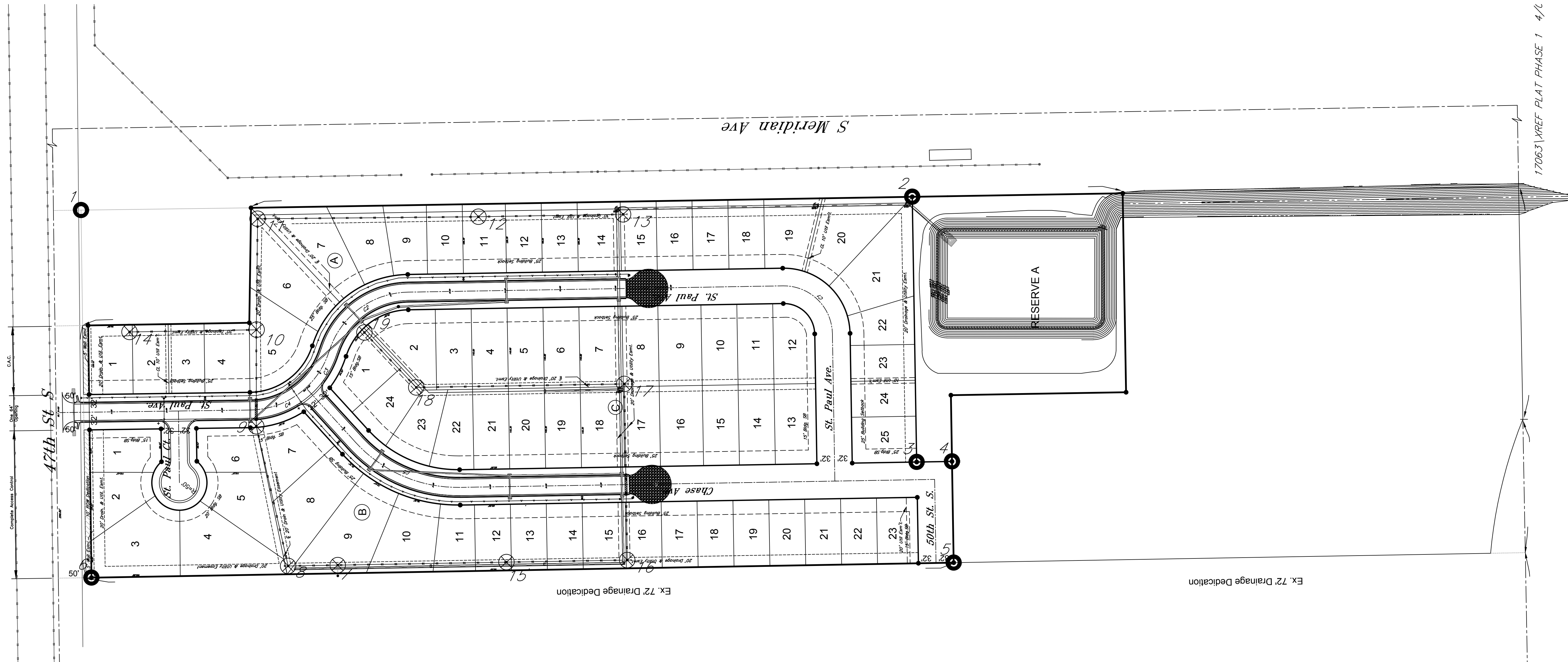
August 2018



DATE: 12-28-2018
 THIS SHEET HAS BEEN SIGNED, SEALED AND DATED ELECTRONICALLY



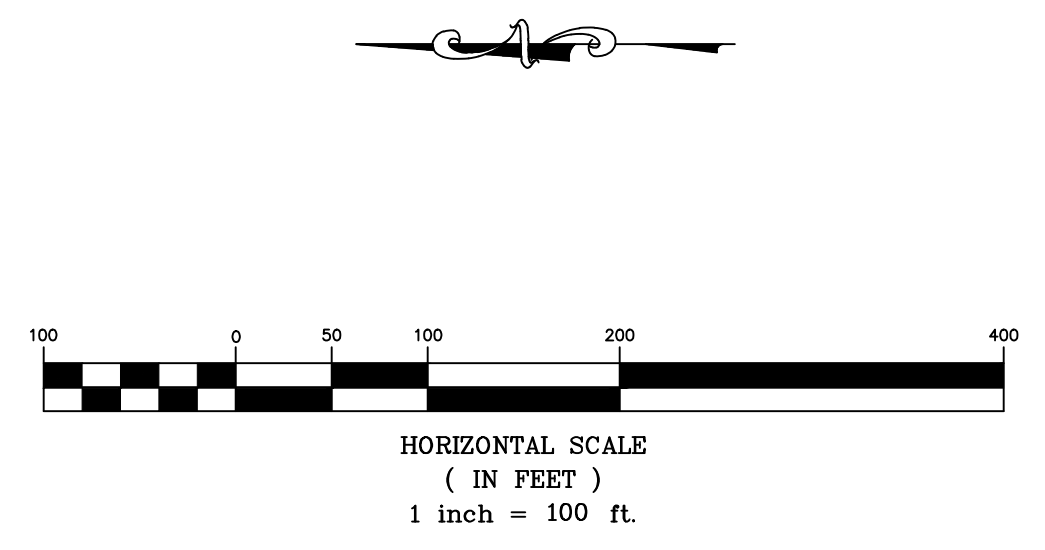
KEMILLER
 ENGINEERING PA
 117 E. Lewis, Wichita, KS 67202 (316)264-0242



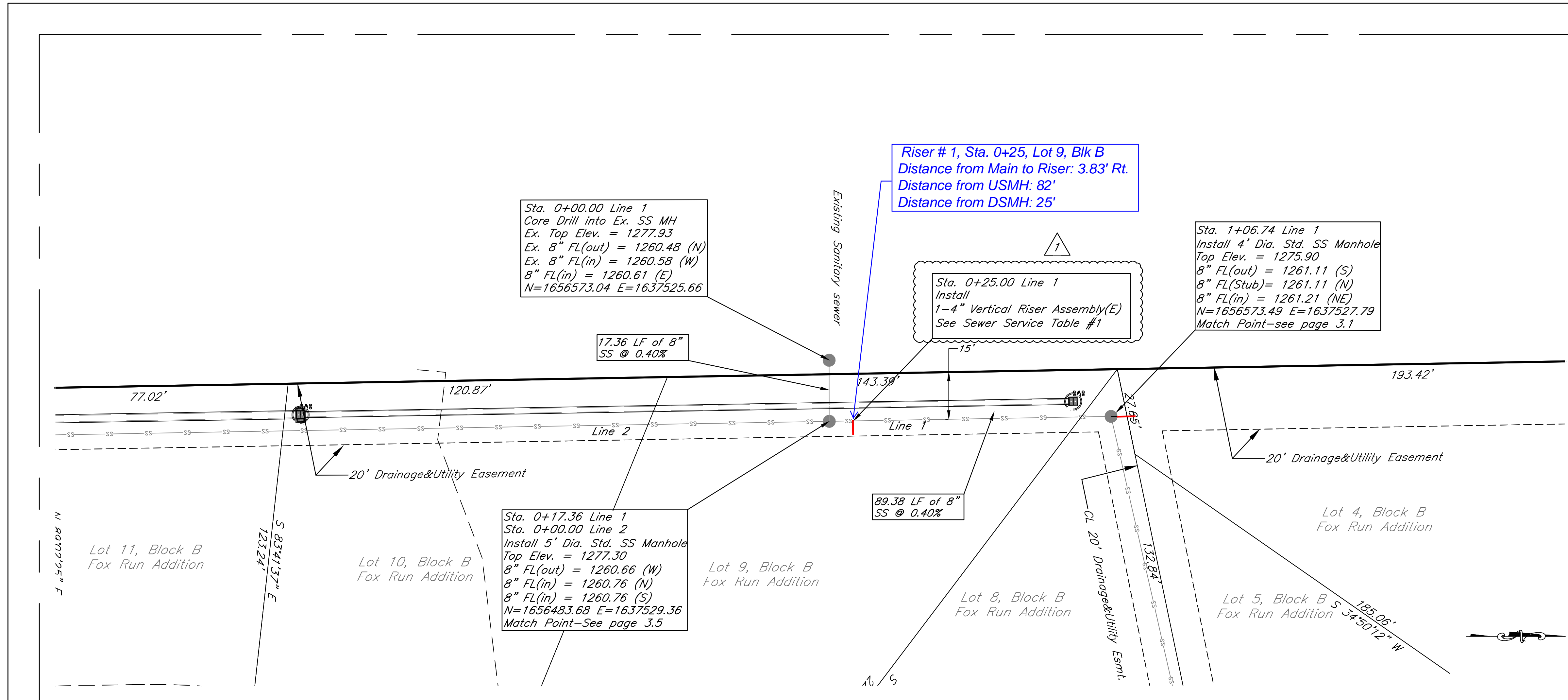
| Control Points | | | |
|----------------|------------|------------|-------------|
| Point # | Northing | Easting | Desc. |
| 1 | 1656948.60 | 1638172.31 | 5/8" Re-Bar |
| 2 | 1655443.59 | 1638196.48 | 5/8" Re-Bar |
| 3 | 1655443.59 | 1637716.05 | 5/8" Re-Bar |
| 4 | 1655371.55 | 1637717.12 | 5/8" Re-Bar |
| 5 | 1655368.48 | 1637533.84 | 5/8" Re-Bar |
| 6 | 1656929.71 | 1637506.56 | 5/8" Re-Bar |

| Sanitary Sewer Line Points | | | |
|----------------------------|------------|------------|----------------------|
| Point # | Northing | Easting | Desc. |
| 7 | 1656483.68 | 1637529.36 | Sta 0+17.36, Line 1 |
| 8 | 1656573.49 | 1637527.79 | Sta 1+06.74, Line 1 |
| 9 | 1656631.25 | 1637780.88 | Sta 3+66.34, Line 1 |
| 10 | 1656631.28 | 1637955.54 | Sta 5+41.01, Line 1 |
| 11 | 1656628.85 | 1638156.62 | Sta 7+42.08, Line 1 |
| 12 | 1656228.94 | 1638160.32 | Sta 11+41.99, Line 1 |
| 13 | 1655967.01 | 1638164.71 | Sta 14+03.95, Line 1 |
| 14 | 1656860.60 | 1637946.47 | Sta 2+29.29, Line 3 |
| 15 | 1656178.19 | 1637534.69 | Sta 3+05.53, Line 2 |
| 16 | 1655959.52 | 1637538.52 | Sta 5+24.24, Line 2 |
| 17 | 1655964.87 | 1637857.55 | Sta 8+43.27, Line 2 |
| 18 | 1656341.81 | 1637851.18 | Sta 12+19.88, Line 2 |
| 19 | 1656435.39 | 1637950.71 | Sta 13+56.49, Line 2 |

Control Point
 SS Points

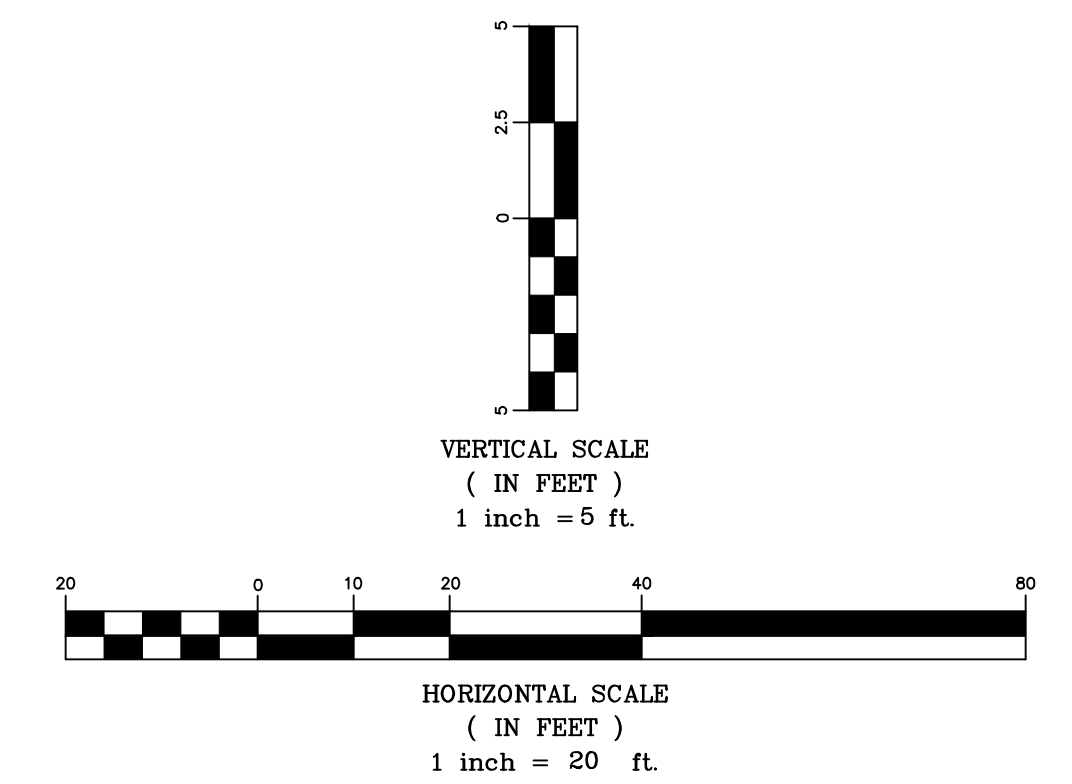
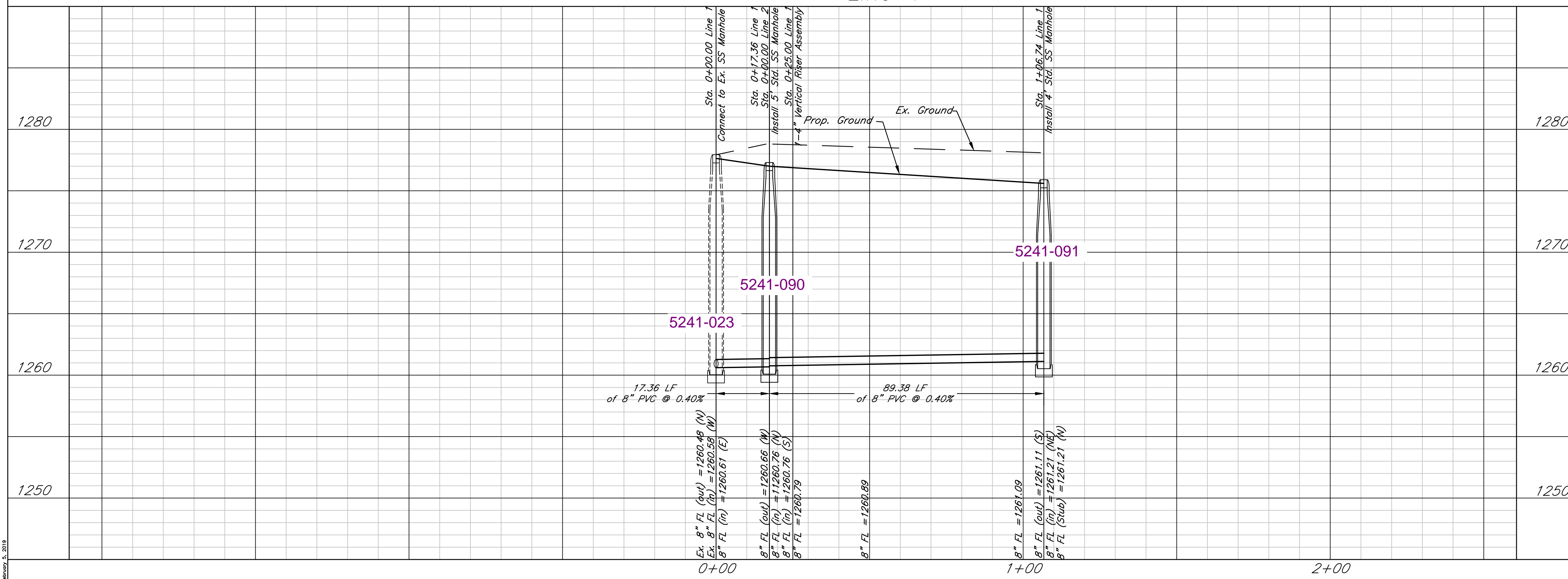


| | | | |
|---|----------------------------------|---------------------|----------------------------|
| Fox Run Control Map Wichita, Kansas | | | |
| 117 E. Lewis, Wichita, KS 67202 (316)264-0242 | PROJECT NUMBER | | |
| | KEM NO. 17063 DESIGN KM | FILE DRAWN PG | DATE 07/2017 REVISED |



| SANITARY SEWER RISER TABLE #1 | | | | | | | FOR INFORMATION ONLY | |
|-------------------------------|--------|----------|-----------|----------|---------|-----------|----------------------|-----------------|
| NUMBER | TYPE | LOCATION | | | STATION | DIRECTION | APPROXIMATE LENGTH | |
| | | LOT NO. | BLOCK NO. | LINE NO. | | | VERTICAL (FT) | HORIZONTAL (FT) |
| 1 | 4" TEE | 9 | B | 1 | 0+25.00 | E | 16.10' | 3.83' |
| 2 | | | | | | | | |
| 3 | | | | | | | | |
| 4 | | | | | | | | |

Added Vertical Riser & Table
 02/05/2019



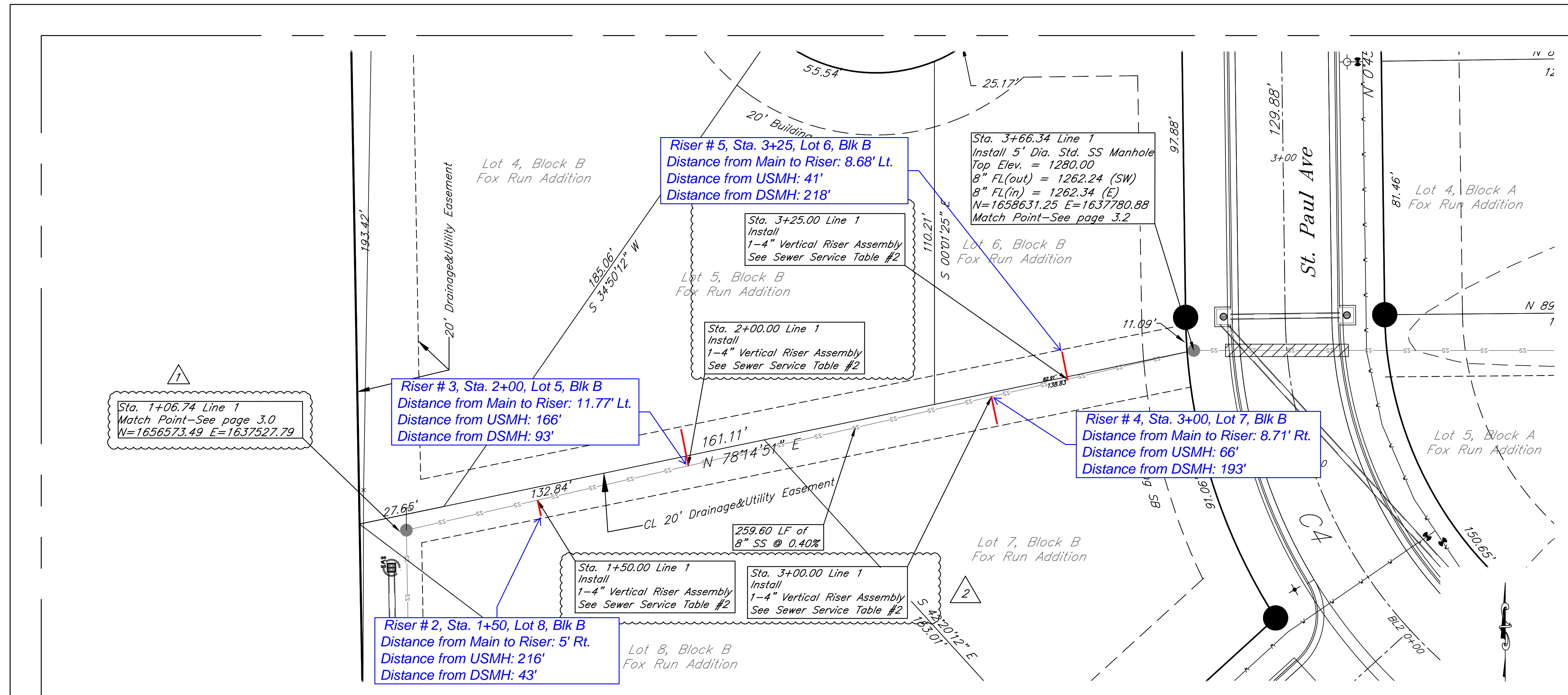
Fox Run Addition
 Sanitary Sewer, Line 1
 Wichita, Kansas

KEMILLER ENGINEERING PA
 117 E. Lewis, Wichita, KS 67202 (316)264-0242

PROJECT NUMBER

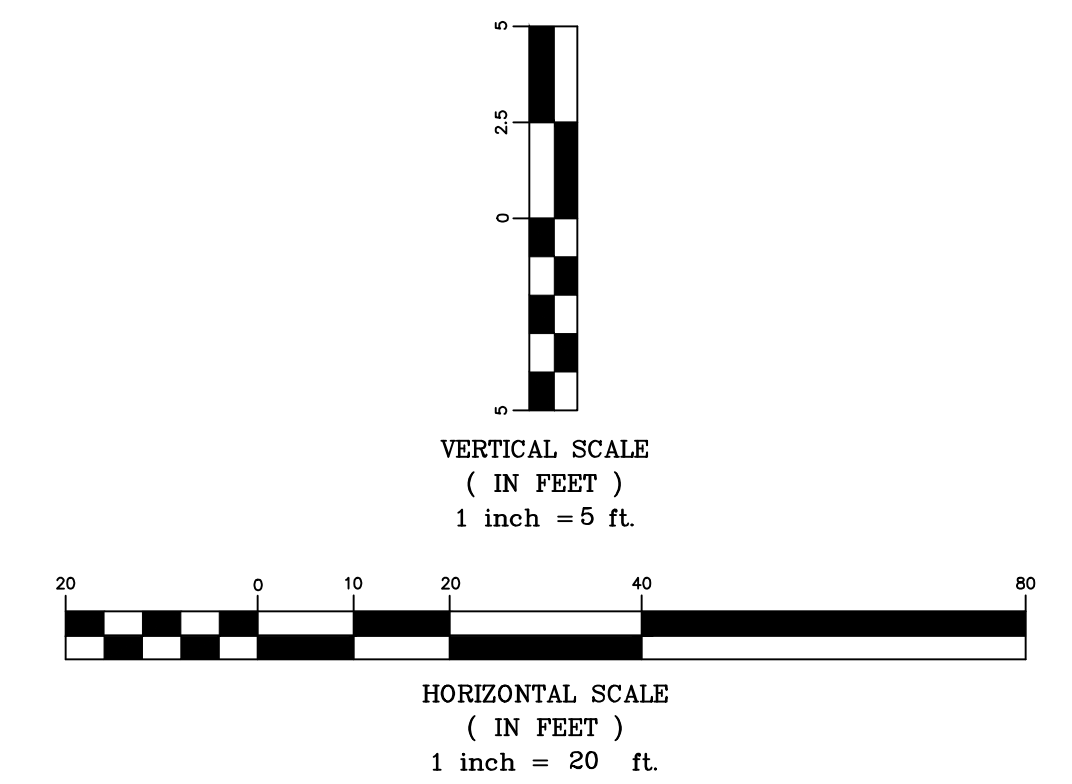
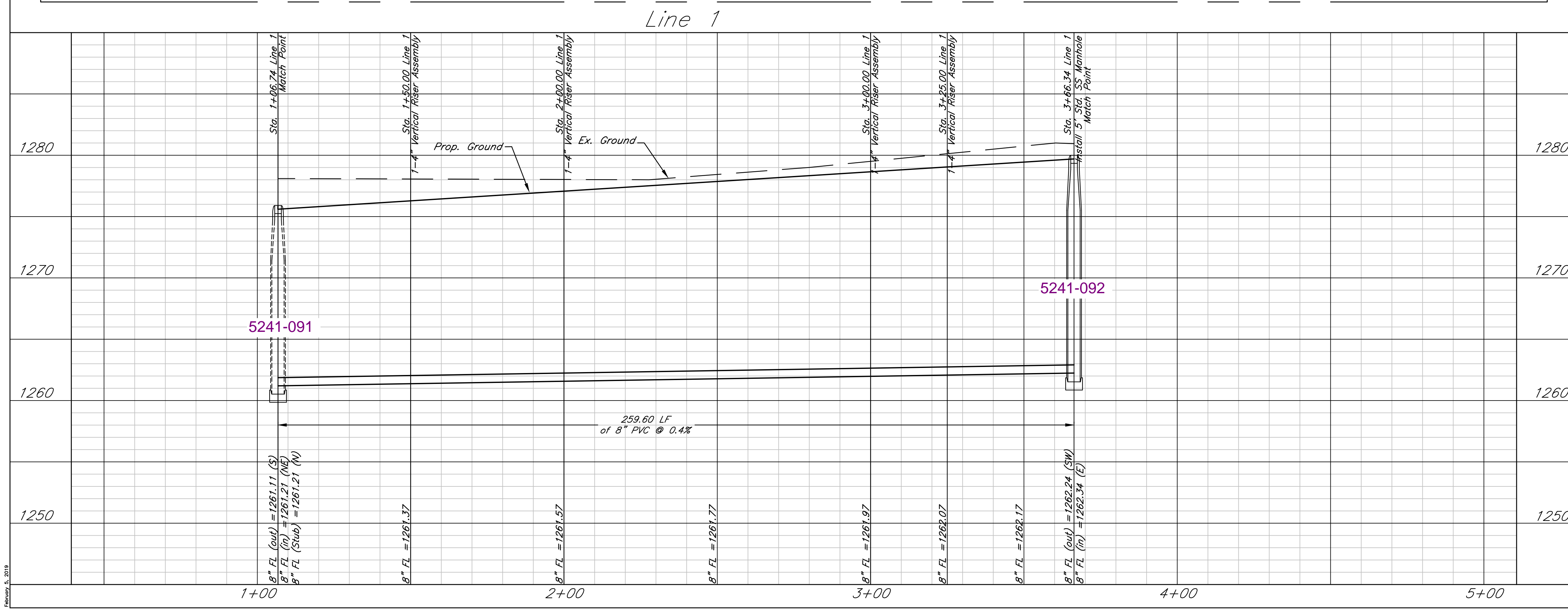
| | | | |
|---------------|----------|--------------------|-----------|
| KEM NO. 17063 | FILE | DATE 06/2017 | SHEET 3.0 |
| DESIGN KM | DRAWN PG | REVISED 02/05/2019 | |

February 5, 2019



| SANITARY SEWER RISER TABLE #2 | | | | | | FOR INFORMATION ONLY | | |
|-------------------------------|--------|----------|-----------|----------|---------|----------------------|--------------------|-----------------|
| NUMBER | TYPE | LOCATION | | | STATION | DIRECTION | APPROXIMATE LENGTH | |
| | | LOT NO. | BLOCK NO. | LINE NO. | | | VERTICAL (FT) | HORIZONTAL (FT) |
| 2 | 4" TEE | 8 | B | 1 | 1+50.00 | SE | 14.92' | 5.00' |
| 3 | 4" TEE | 5 | B | 1 | 2+00.00 | NW | 15.43' | 11.77' |
| 4 | 4" TEE | 7 | B | 1 | 3+00.00 | SE | 16.65' | 8.71' |
| 5 | 4" TEE | 6 | B | 1 | 3+25.00 | NW | 17.05' | 8.68' |

- 1 Revised Coordinates
0/31/2019
- 2 Added Vertical Riser & Table
02/05/2019

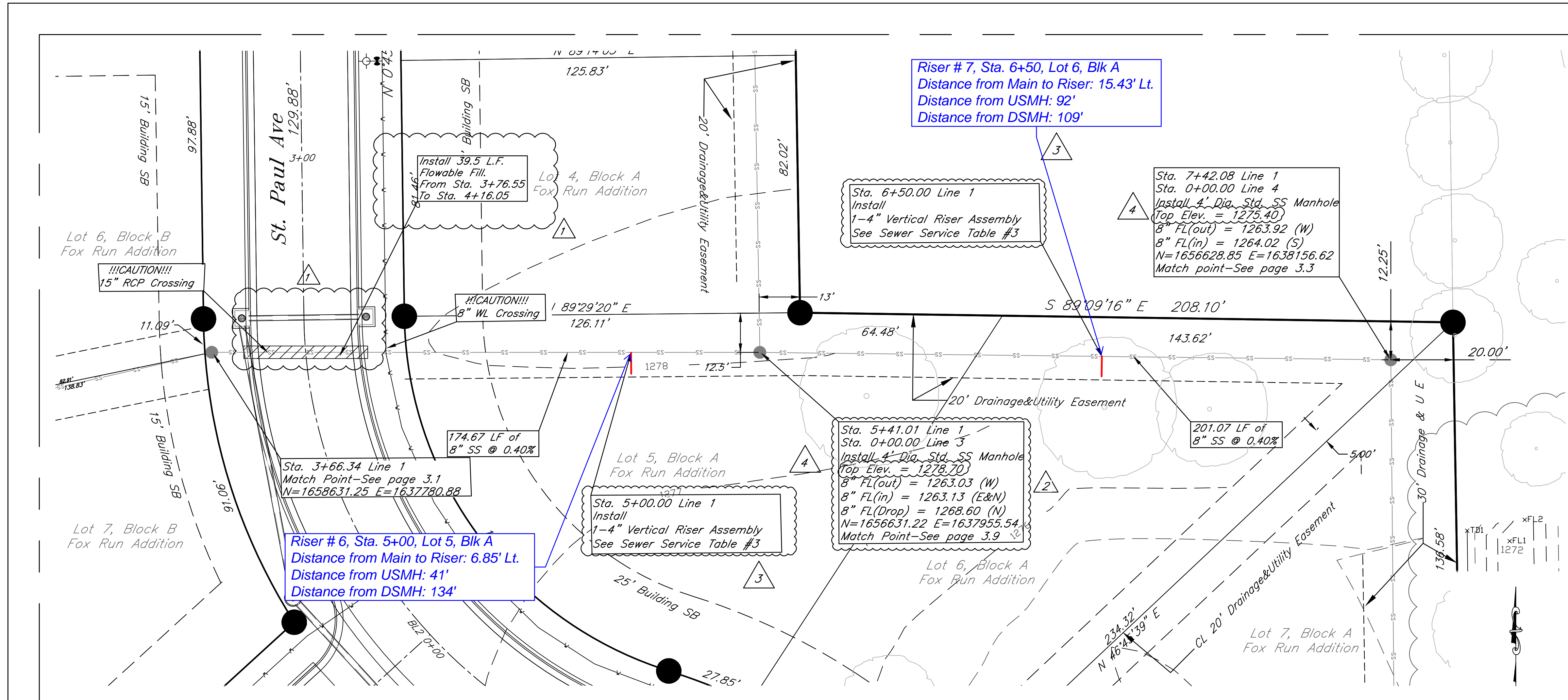


Fox Run Addition
Sanitary Sewer, Line 1
Wichita, Kansas

KEMILLER ENGINEERING PA
117 E. Lewis, Wichita, KS 67202 (316)264-0242

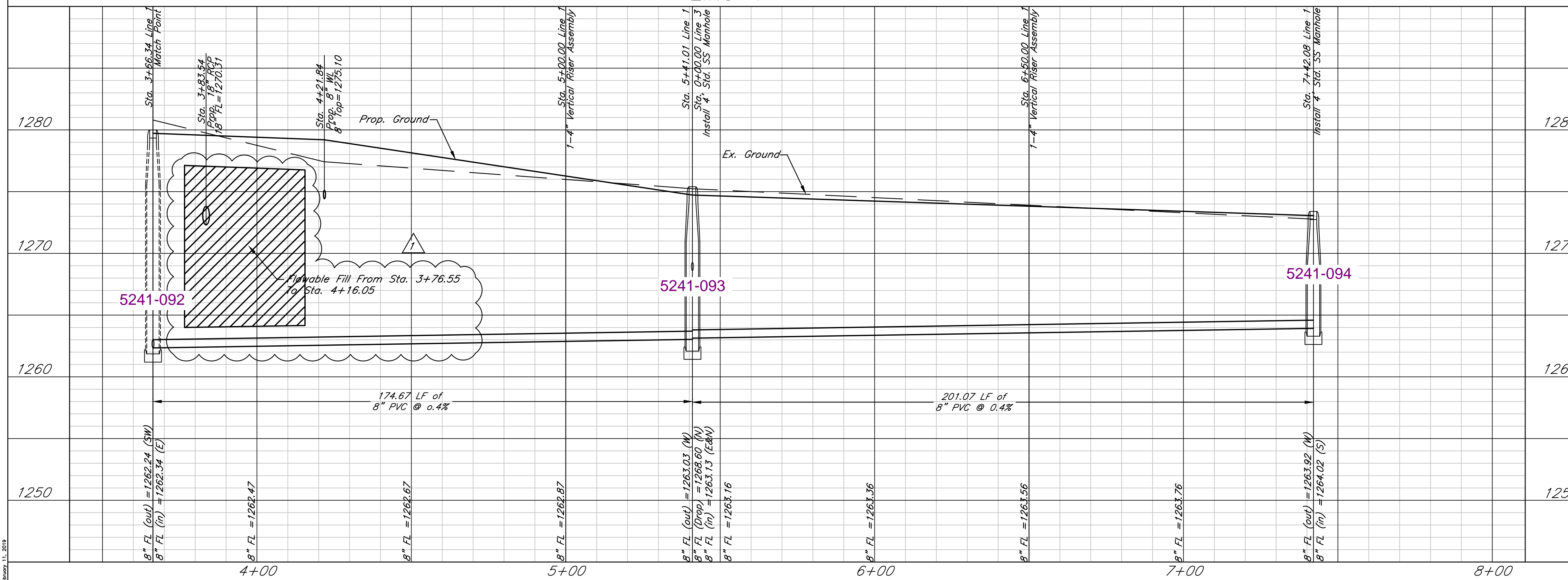
PROJECT NUMBER

| | | | |
|------------------|-------------|-----------------------|--------------|
| KEM NO. 17063 | FILE | DATE 06/2017 | SHEET 3.1 |
| DESIGN KM | DRAWN PG | REVISED 02/05/2019 | |



| SANITARY SEWER RISER TABLE #3 | | | | | | | FOR INFORMATION ONLY | |
|-------------------------------|--------|----------|-----------|----------|---------|-----------|----------------------|-----------------|
| NUMBER | TYPE | LOCATION | | | STATION | DIRECTION | APPROXIMATE LENGTH | |
| | | LOT NO. | BLOCK NO. | LINE NO. | | | VERTICAL (FT) | HORIZONTAL (FT) |
| 6 | 4" TEE | 5 | A | 1 | 5+00.00 | S | 6.85' | 6.85' |
| 7 | 4" TEE | 6 | A | 1 | 6+50.00 | S | 15.43' | 6.50' |

- 1 Added Flowable Fill 12/17/2018
- 2 Revised Coordinates 01/31/2019
- 3 Added Vertical Riser & Table 02/05/2019
- 4 Adjusted Top of Manhole Elevations 02/11/2019

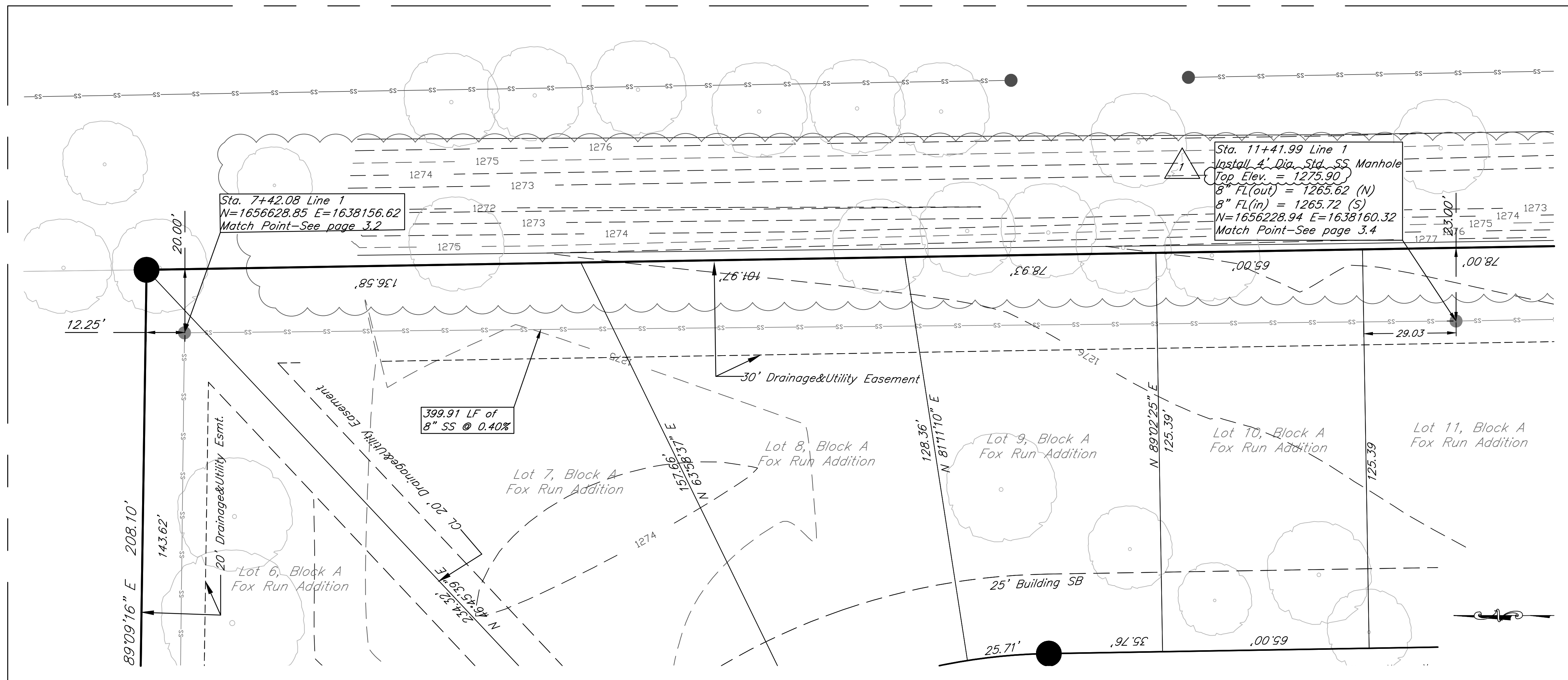


Fox Run Addition
 Sanitary Sewer, Line 1
 Wichita, Kansas

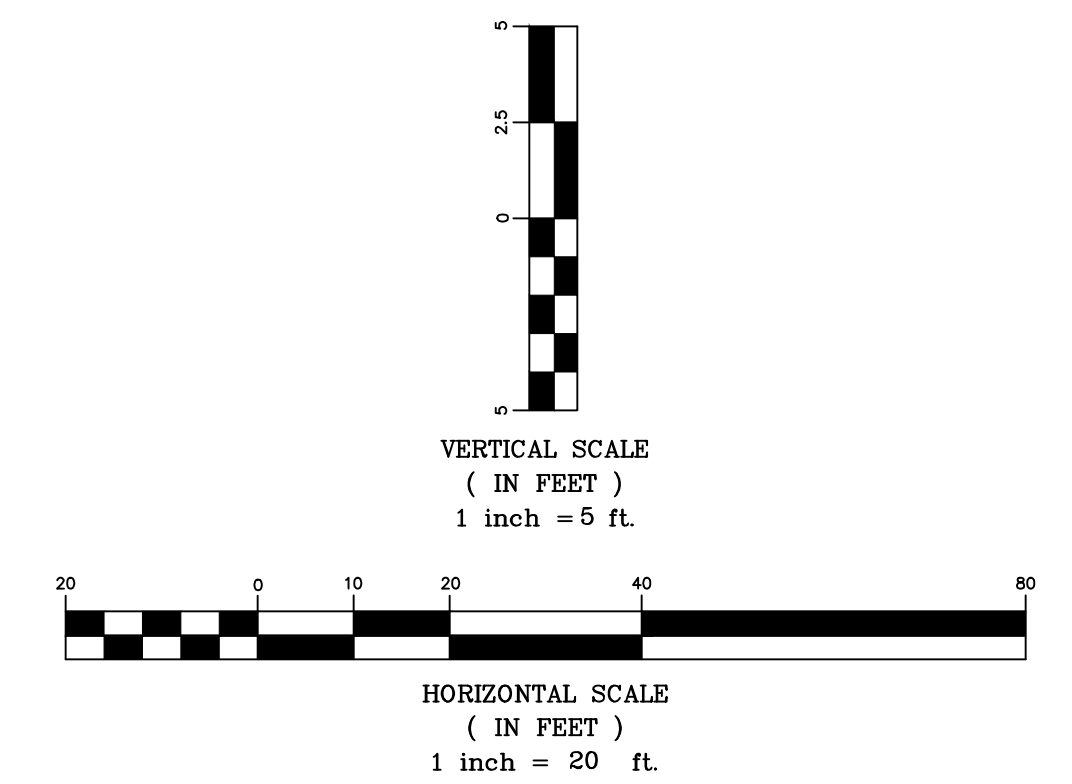
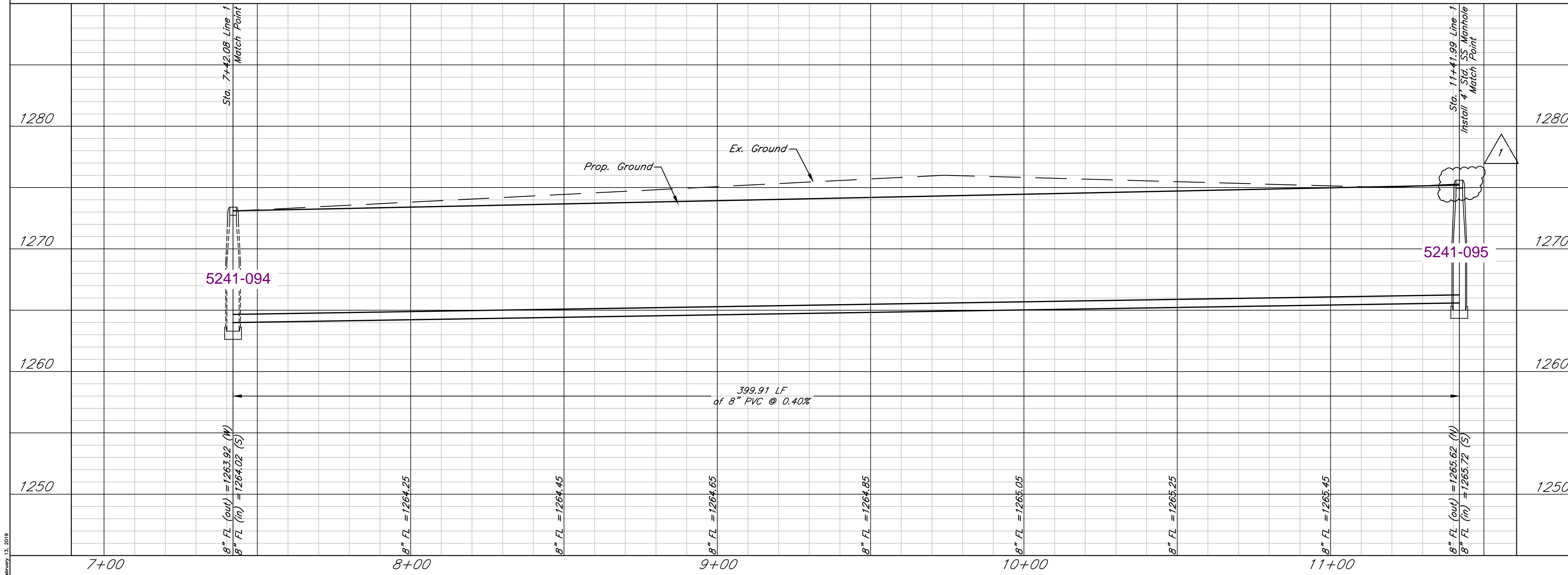
PROJECT NUMBER

| | | | |
|--|----------|--------------------|-----------|
| KEMILLER ENGINEERING PA 117 E. Lewis, Wichita, KS 67202 (316)264-0242 | FILE | DATE 06/2017 | SHEET 3.2 |
| DESIGN KM | DRAWN PG | REVISED 02/15/2019 | |

Adjusted Top of Manhole Elevation.
02/13/2019



Line 1

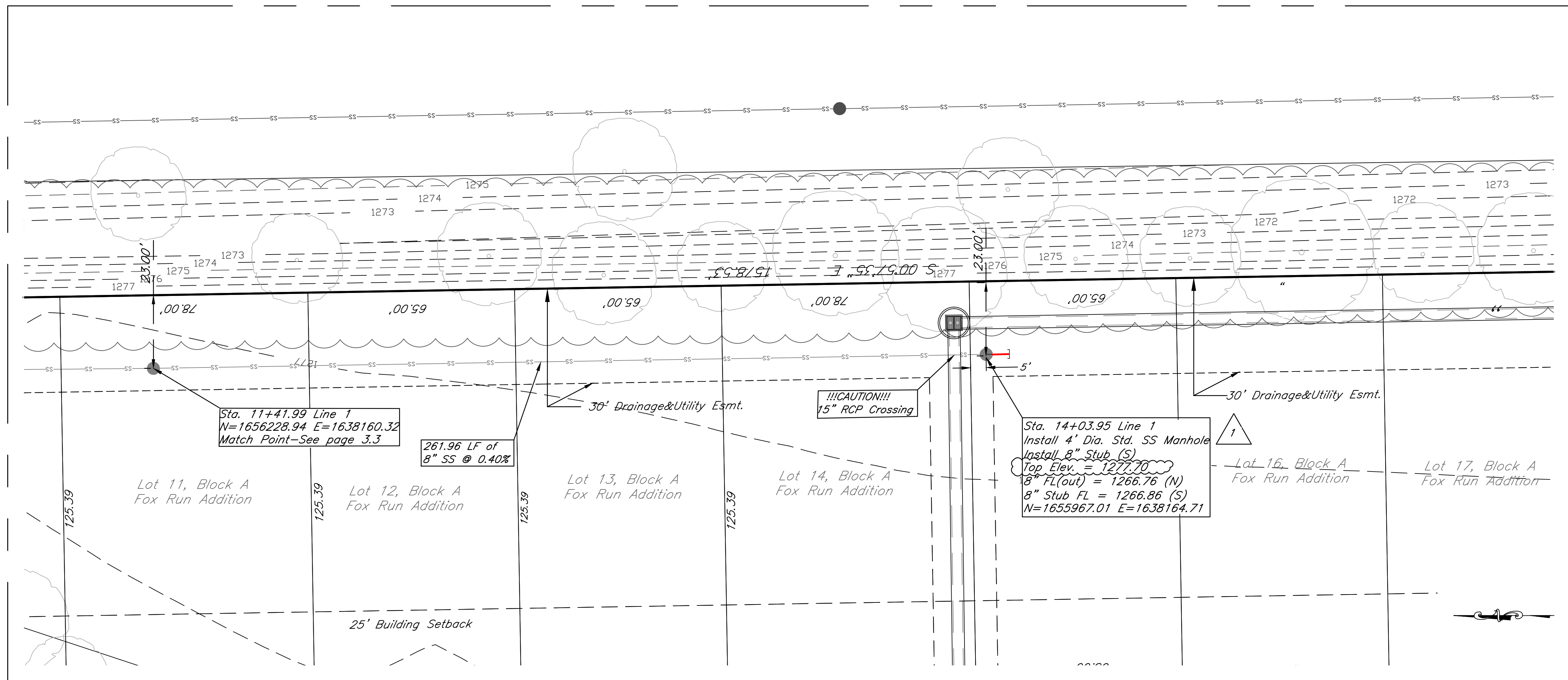


Fox Run Addition
Sanitary Sewer, Line 1
Wichita, Kansas

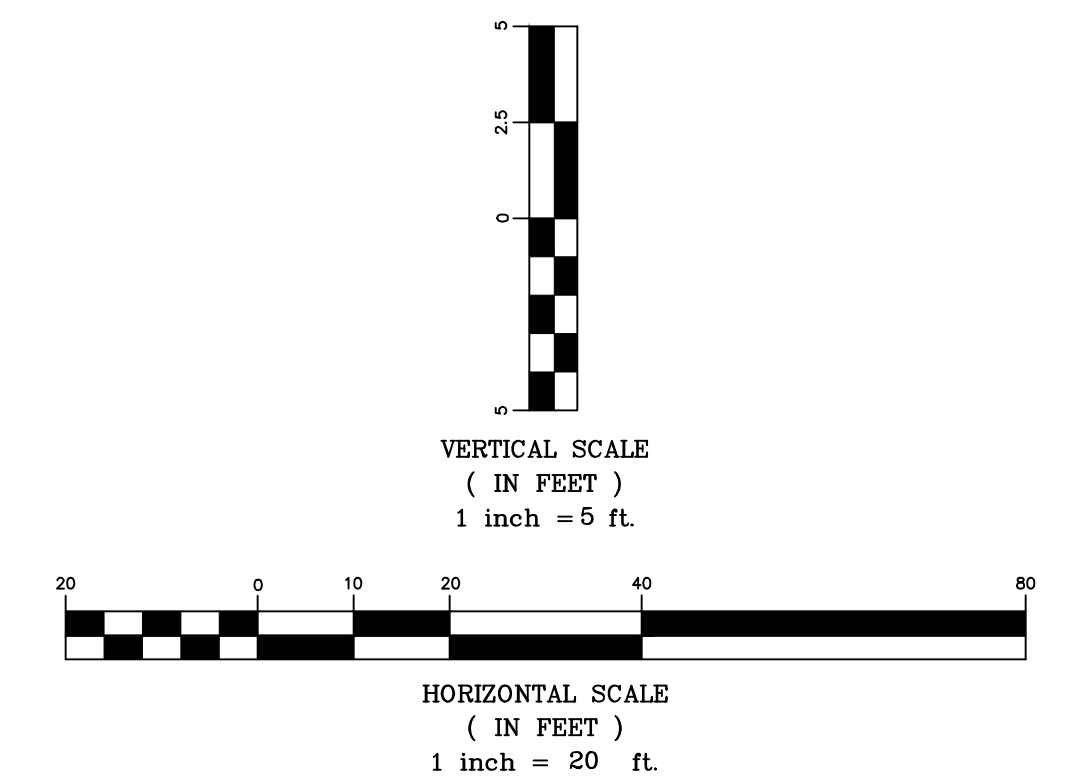
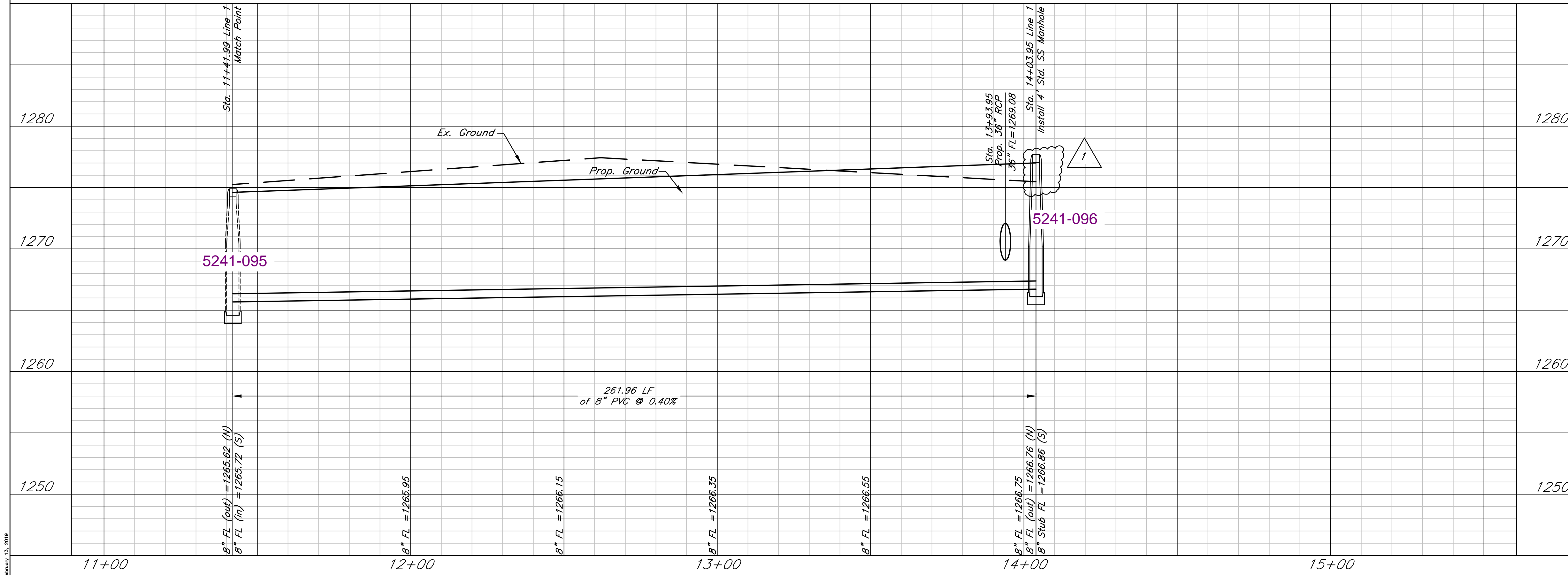
| | | | | |
|---|----------------|--------------------|--------------|-----------|
| 117 E. Lewis, Wichita, KS 67202 (316)264-0242 | PROJECT NUMBER | | | |
| | KEM NO. 17063 | FILE | DATE 06/2017 | SHEET 3.3 |
| DESIGN KM | DRAWN PG | REVISED 02/13/2019 | | |

02/13/2019

Adjusted Top of Manhole Elevation.
02/13/2019



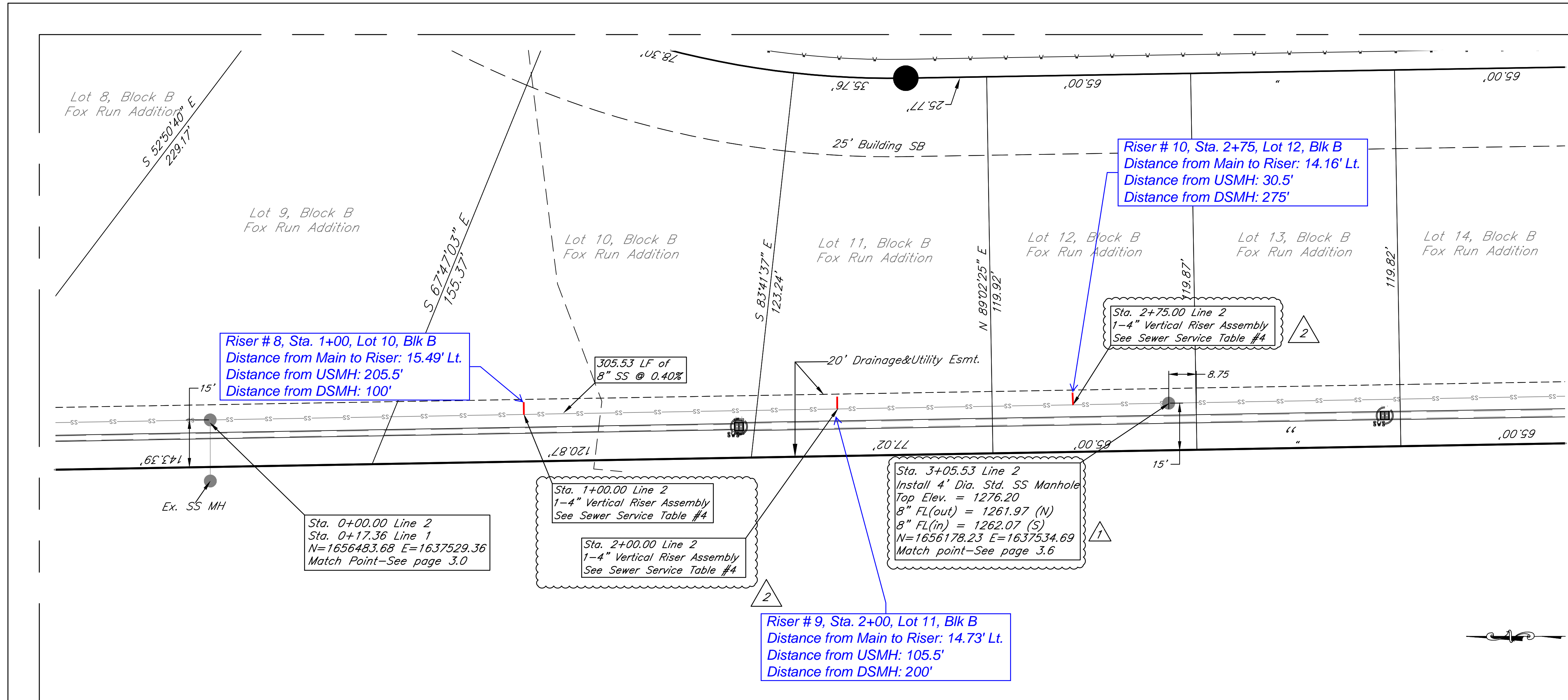
Line 1



Fox Run Addition
Sanitary Sewer, Line 1
Wichita, Kansas

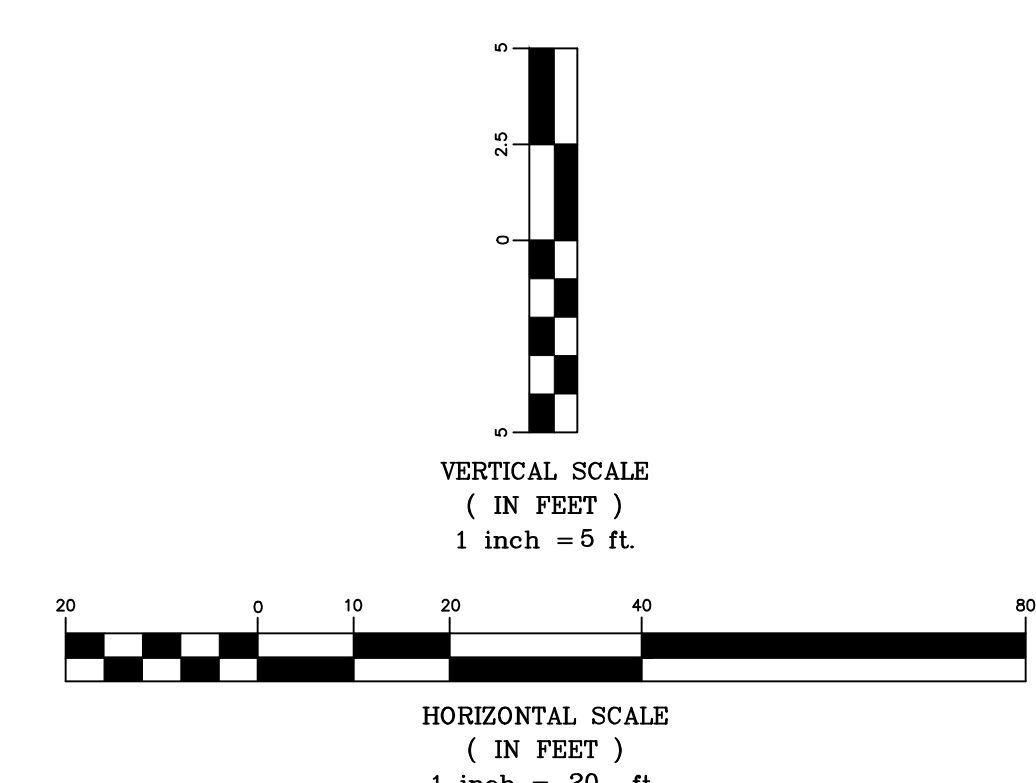
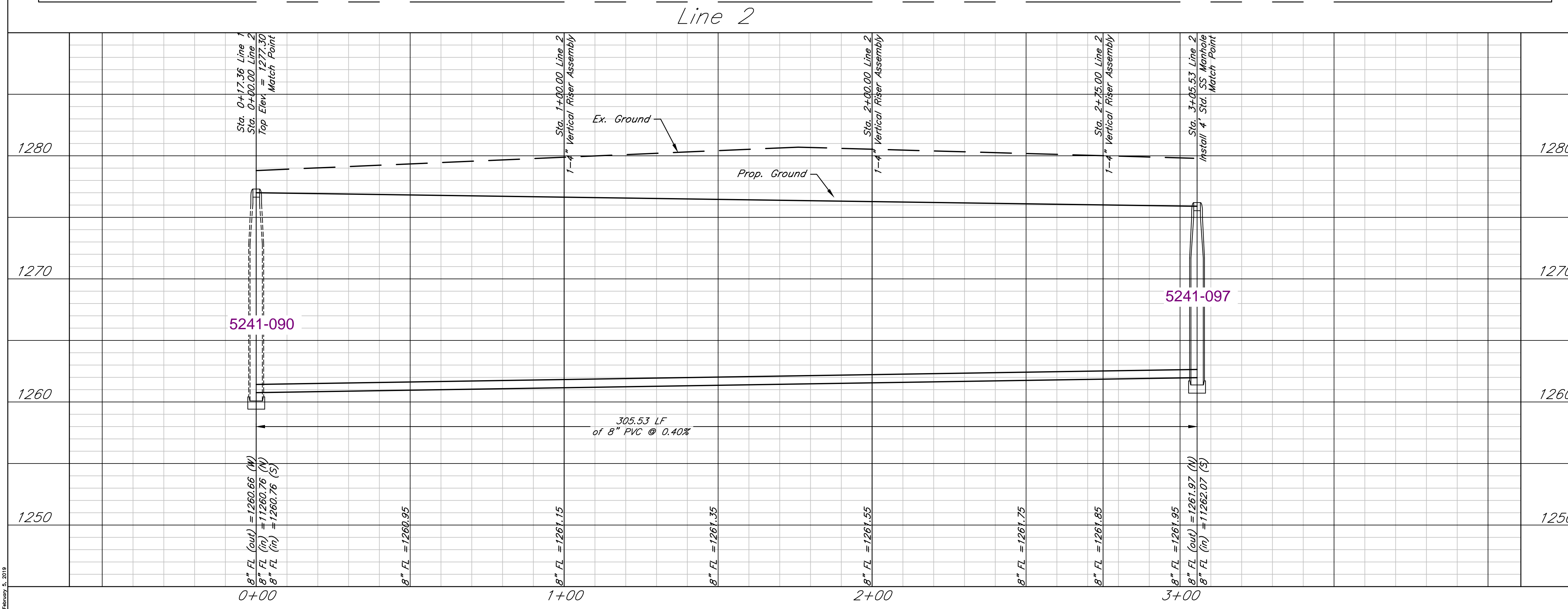
| | | | | |
|---|------------------|-----------------------|-----------------|--------------|
| 117 E. Lewis, Wichita, KS 67202 (316)264-0242 | PROJECT NUMBER | | | |
| | KEM NO. 17063 | FILE | DATE 06/2017 | SHEET 3.4 |
| DESIGN KM | DRAWN PG | REVISED 02/13/2019 | | |

02/13/2019



| SANITARY SEWER RISER TABLE #2 | | | | | | | FOR INFORMATION ONLY | |
|-------------------------------|--------|----------|-----------|----------|---------|-----------|----------------------|-----------------|
| NUMBER | TYPE | LOCATION | | | STATION | DIRECTION | APPROXIMATE LENGTH | |
| | | LOT NO. | BLOCK NO. | LINE NO. | | | VERTICAL (FT) | HORIZONTAL (FT) |
| 8 | 4" TEE | 10 | B | 2 | 1+00.00 | E | 15.49' | 3.78' |
| 9 | 4" TEE | 11 | B | 2 | 2+00.00 | E | 14.73' | 3.73' |
| 10 | 4" TEE | 12 | B | 2 | 2+75.00 | E | 14.16' | 3.70' |

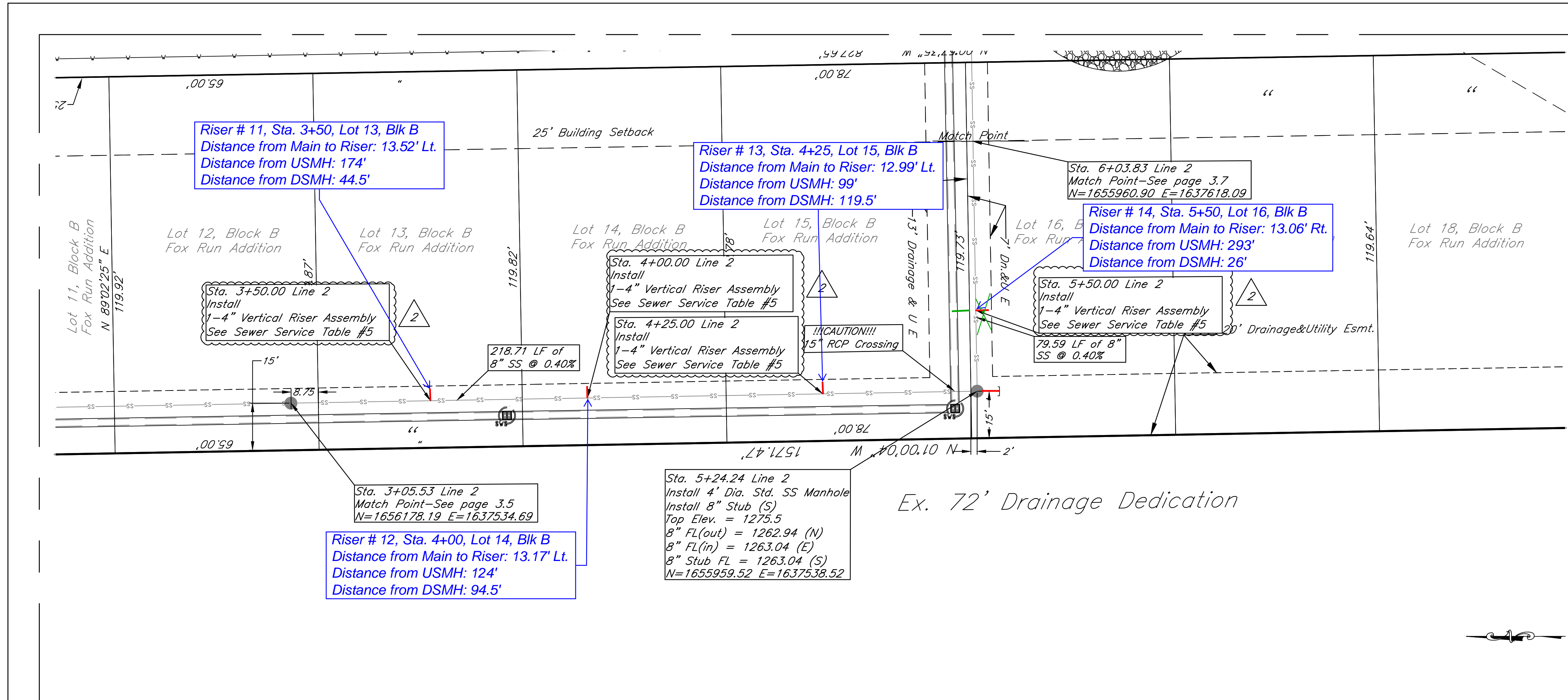
- 1 Revised Coordinates
01/31/2019
- 2 Added Vertical Riser & Table
02/05/2019



Fox Run Addition
Sanitary Sewer, Line 2
Wichita, Kansas

| | | | | |
|--------------|------------------|-----------------------|-----------------|---------------------|
| | PROJECT NUMBER | | | SHEET 3.5 |
| | KEM NO. 17063 | FILE | DATE 06/2017 | |
| DESIGN KM | DRAWN PG | REVISED 02/05/2019 | | |

February 5, 2019

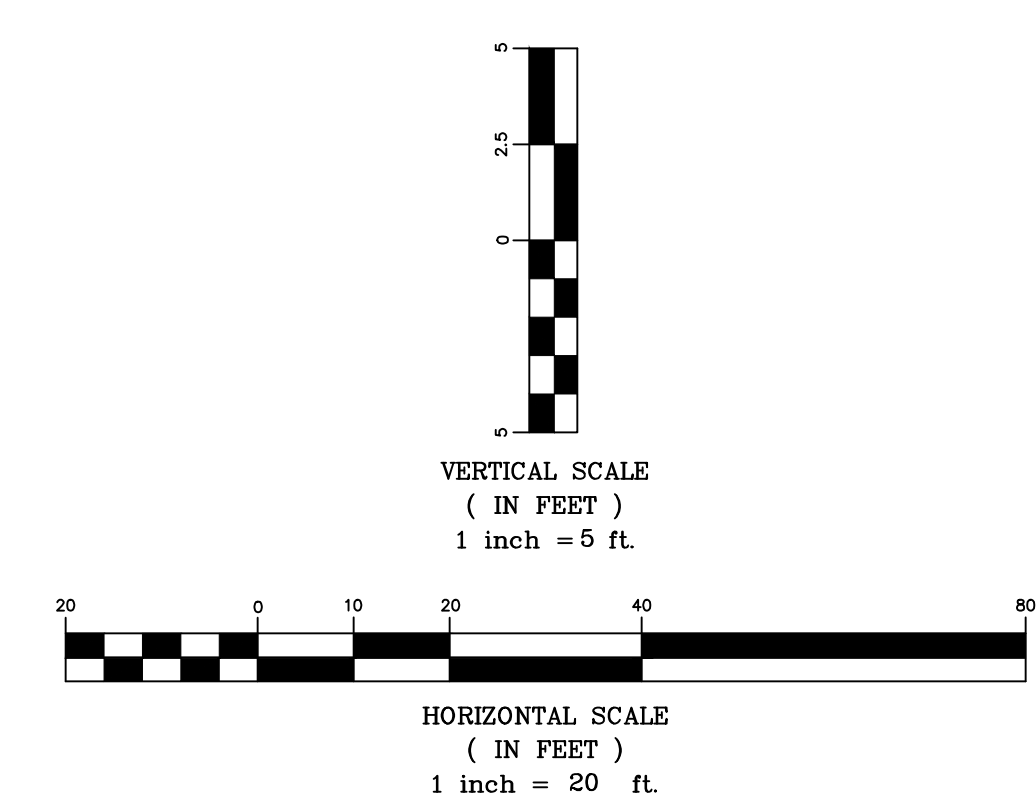
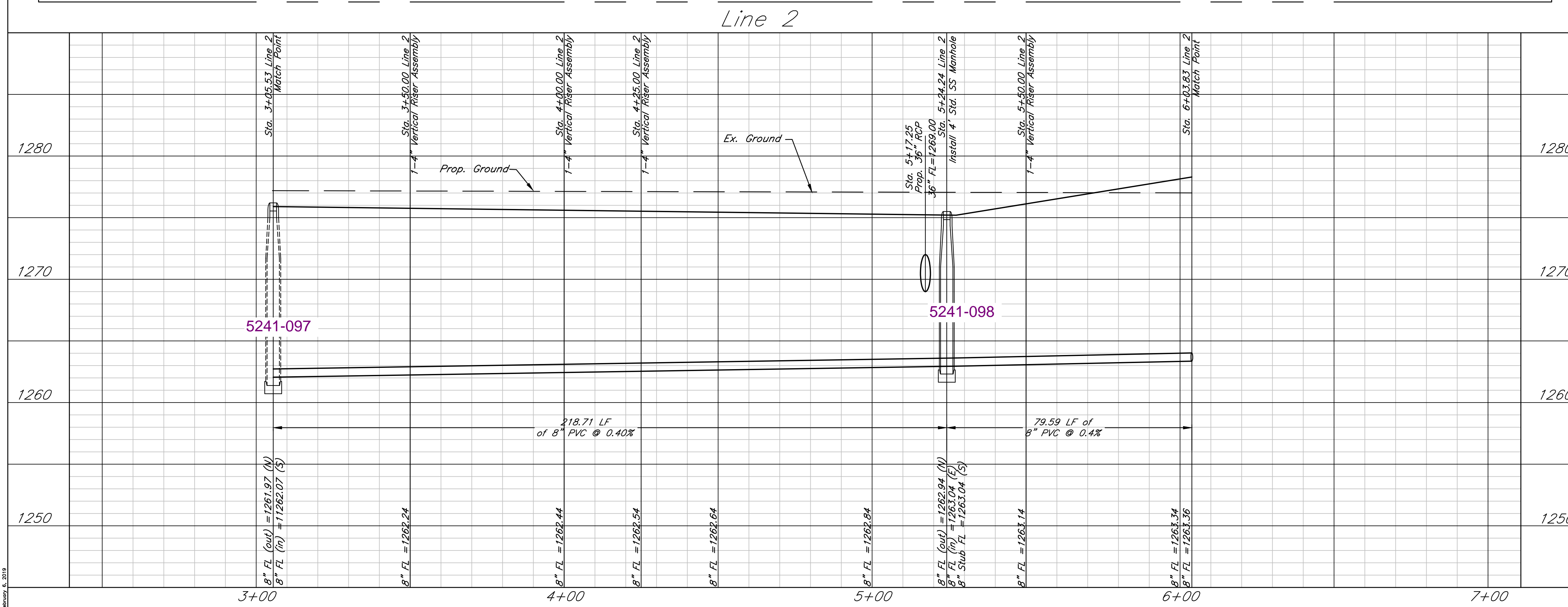


| SANITARY SEWER RISER TABLE #2 | | | | | | | FOR INFORMATION ONLY | |
|-------------------------------|--------|----------|-----------|----------|---------|-----------|----------------------|-----------------|
| NUMBER | TYPE | LOCATION | | | STATION | DIRECTION | APPROXIMATE LENGTH | |
| | | LOT NO. | BLOCK NO. | LINE NO. | | | VERTICAL (Ft) | HORIZONTAL (Ft) |
| 11 | 4" TEE | 13 | B | 2 | 3+50.00 | E | 13.52' | 3.66' |
| 12 | 4" TEE | 14 | B | 2 | 4+00.00 | E | 13.17' | 3.64' |
| 13 | 4" TEE | 15 | B | 2 | 4+25.00 | E | 12.99' | 3.60' |
| 14 | 4" TEE | 16 | B | 2 | 5+50.00 | E | 13.06' | 4.00' |

- 1 Revised Coordinates
01/31/2019
- 2 Added Vertical Riser & Table
02/05/2019

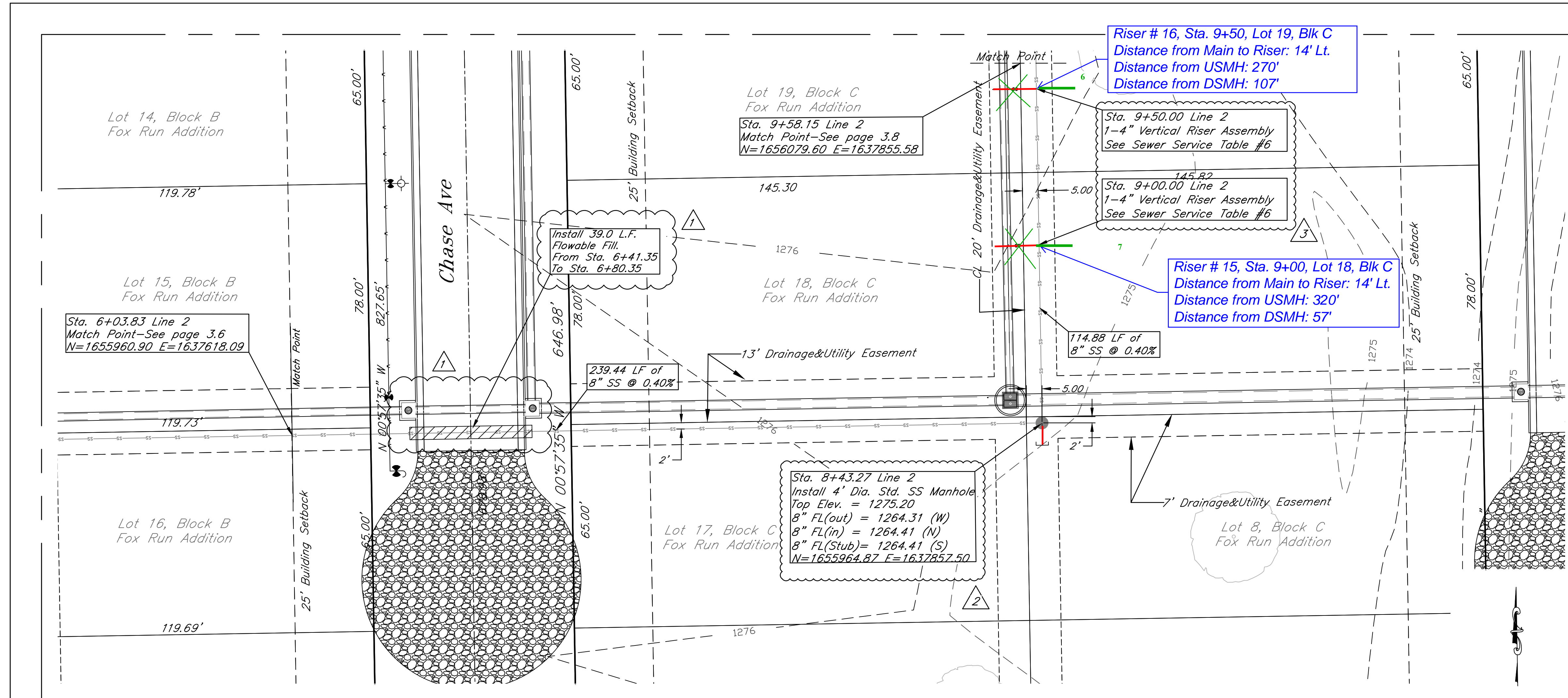
Per televising records that were confirmed by video review at Sewer Maintenance 6-5-2020, riser #14 faces north. No riser was installed for Lot 16. - LML

Per MABCD, Lot 15 has already connected but there is no record of which riser they used. - LML 6-8-2020



Fox Run Addition
Sanitary Sewer, Line 2
Wichita, Kansas

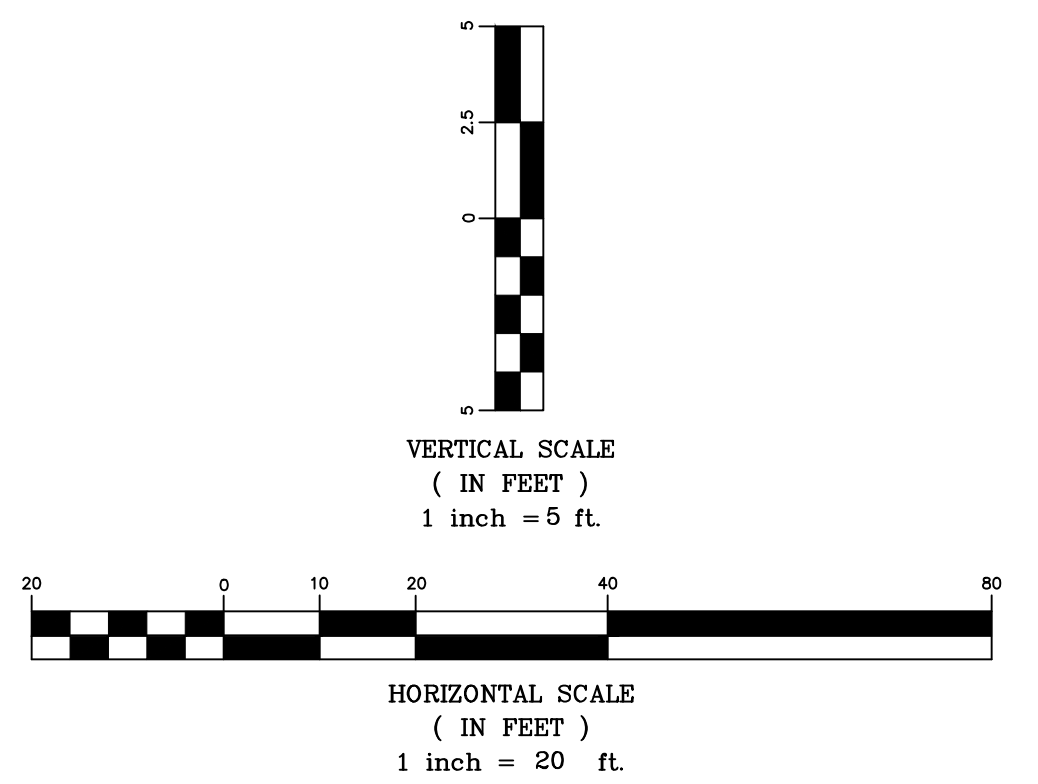
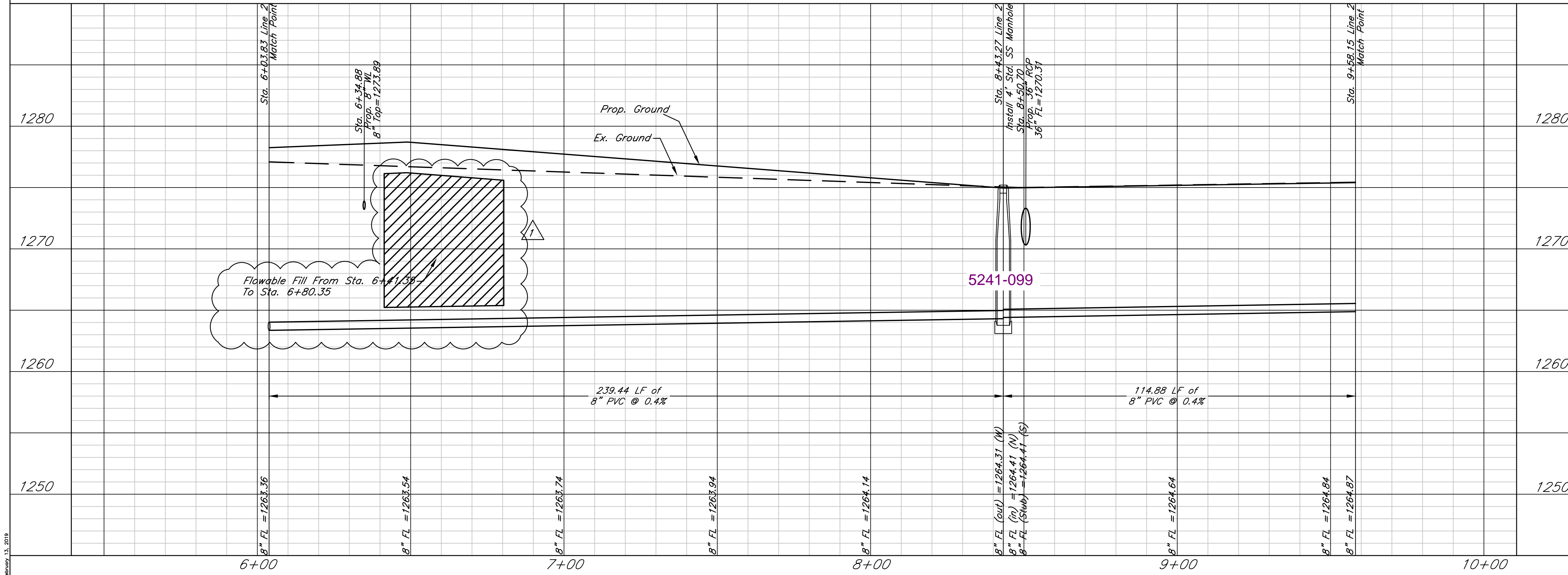
| | | | |
|---|------------------|-------------------------|------------|
| KEMILLER ENGINEERING P.A. <small>117 E. Lewis, Wichita, KS 67202 (316)264-0242</small> | PROJECT NUMBER | | 3.6 |
| | KEM NO. 17063 | FILE DATE 06/2017 | |
| DESIGN KM | DRAWN PG | REVISED 02/05/2019 | |



- 1 Added Flowable Fill 12/17/2018
- 2 Revised Coordinates 01/31/2019
- 3 Added Vertical Riser Callouts & Table. 02/13/2019

6-8-2020: These two risers are facing east and are not facing Lots 18 and 19, Block C. The risers may be used for Lots 6 & 7 Block C. **THERE ARE NO RISERS FOR LOTS 18 AND 19, BLOCK C -LML**

| SANITARY SEWER RISER TABLE # | | | | | | | FOR INFORMATION ONLY | | |
|------------------------------|--------|---------|-----------|----------|---------|-----------|----------------------|-----------------|--------|
| LOCATION | | | | | | | APPROXIMATE LENGTH | | |
| NUMBER | TYPE | LOT NO. | BLOCK NO. | LINE NO. | STATION | DIRECTION | VERTICAL (Ft) | HORIZONTAL (Ft) | |
| 15 | 4" TEE | 7 | 18 | C | 2 | 9+00.00 | E | 10.53' | 14.00' |
| 16 | 4" TEE | 6 | 19 | C | 2 | 9+50.00 | E | 10.52' | 14.00' |



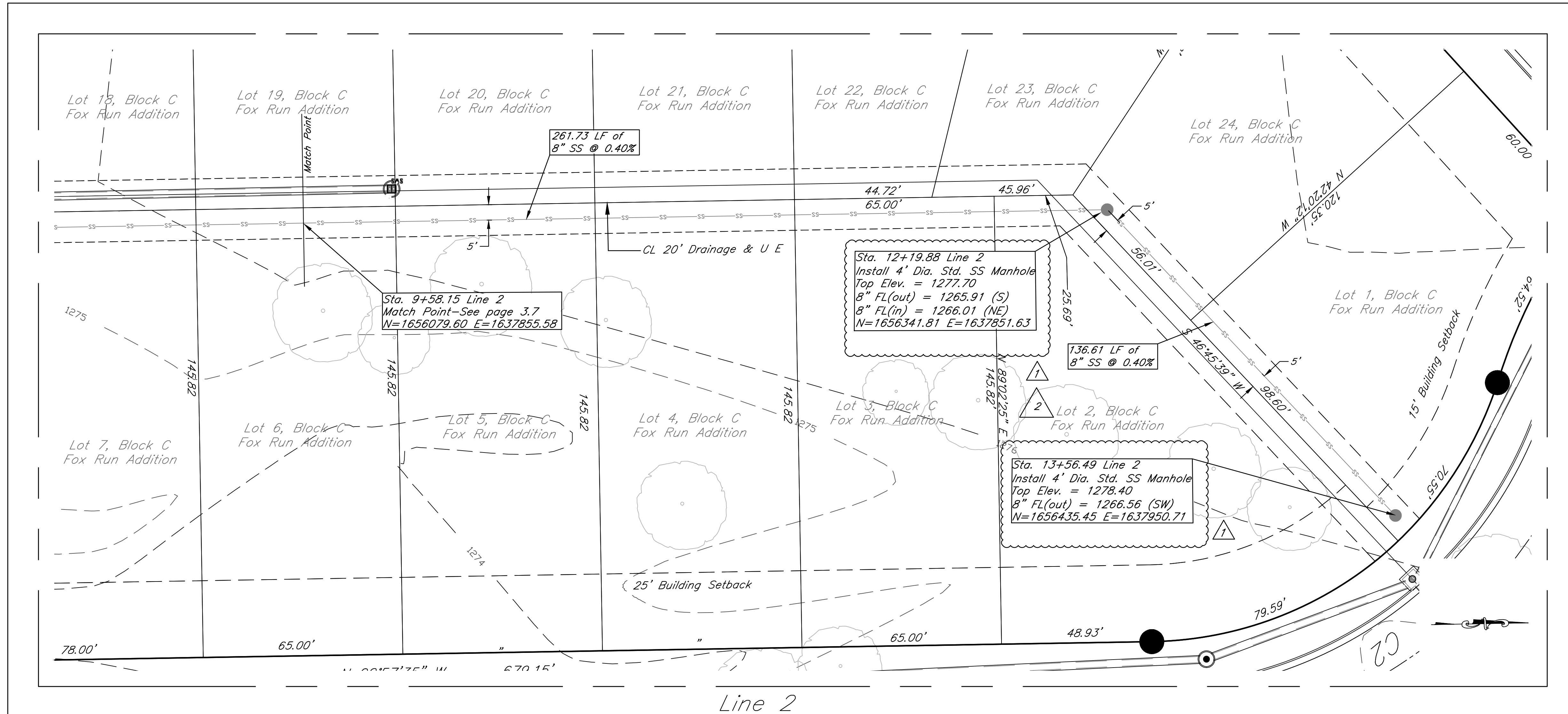
Fox Run Addition
Sanitary Sewer, Line 2
Wichita, Kansas

KEMILLER ENGINEERING P.A.
117 E. Lewis, Wichita, KS 67202 (316)264-0242

PROJECT NUMBER: 17063

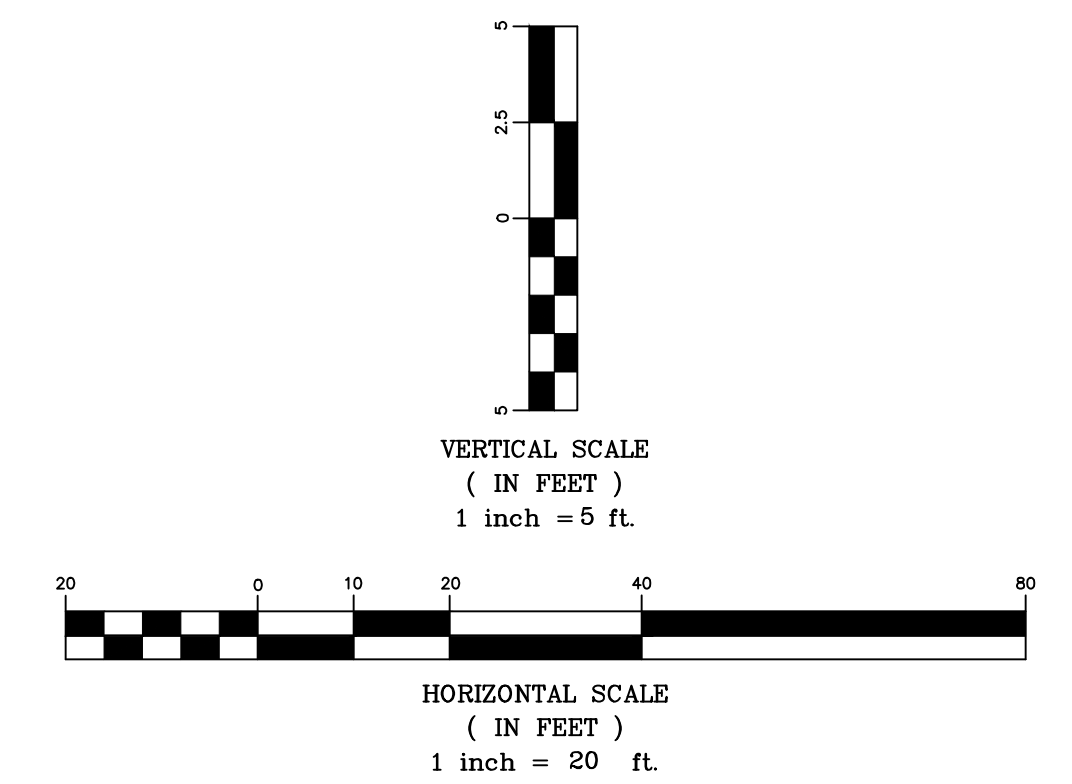
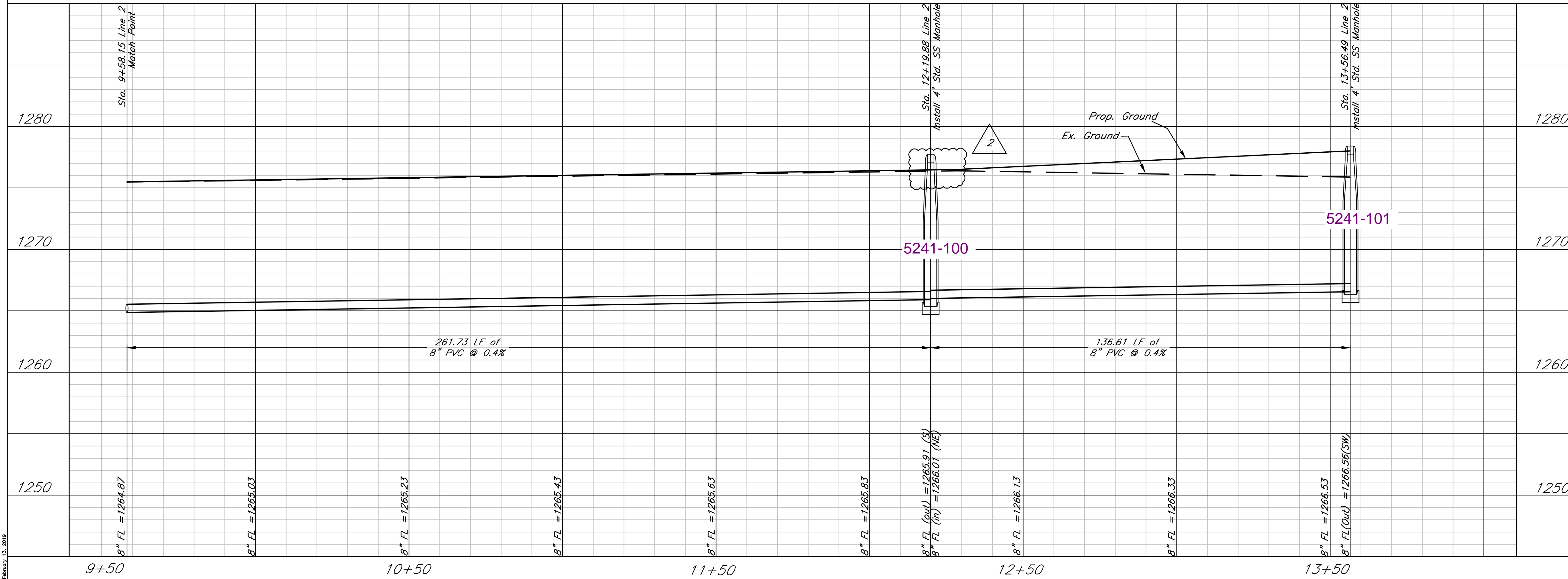
| | | |
|-------|---------|-------|
| FILE | DATE | SHEET |
| DRAWN | REVISED | 3.7 |

DESIGN: KM, DRAWN: BJ, REVISED: 02/13/2019



1 Revised Coordinates
0/31/2019

2 Adjusted Top of
Manhole Elevation.
02/13/2019



Fox Run Addition
Sanitary Sewer, Line 2
Wichita, Kansas

| | | | | |
|--------------|------------------|-----------------------|-----------------|--------------|
| | PROJECT NUMBER | | | |
| | KEM NO. 17063 | FILE | DATE 06/2017 | SHEET 3.8 |
| DESIGN KM | DRAWN BJ | REVISED 02/13/2019 | | |

02/13/2019

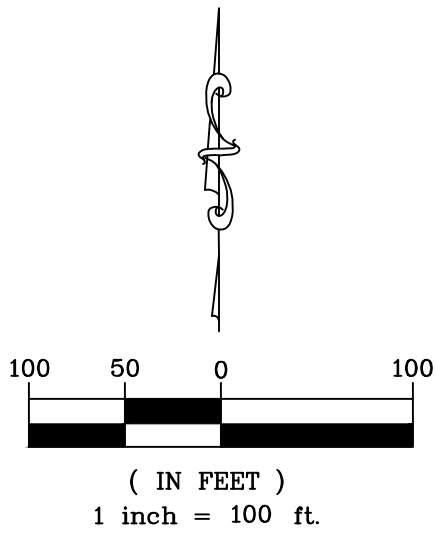
Fox Run Addition
Wichita, Sedgwick County, Kansas
 Part of the NE 1/4, Section 24, Township 28 South, Range 1 West

For
Reference
only

NW Corner NE 1/4,
Sec. 24, T28S, R1W
Sedg. Co. cap (found)

N. 1/16 Corner NE 1/4,
Sec. 24, T28S, R1W

NE Corner NE 1/4,
Sec. 24, T28S, R1W
1/2" Rebar (found)

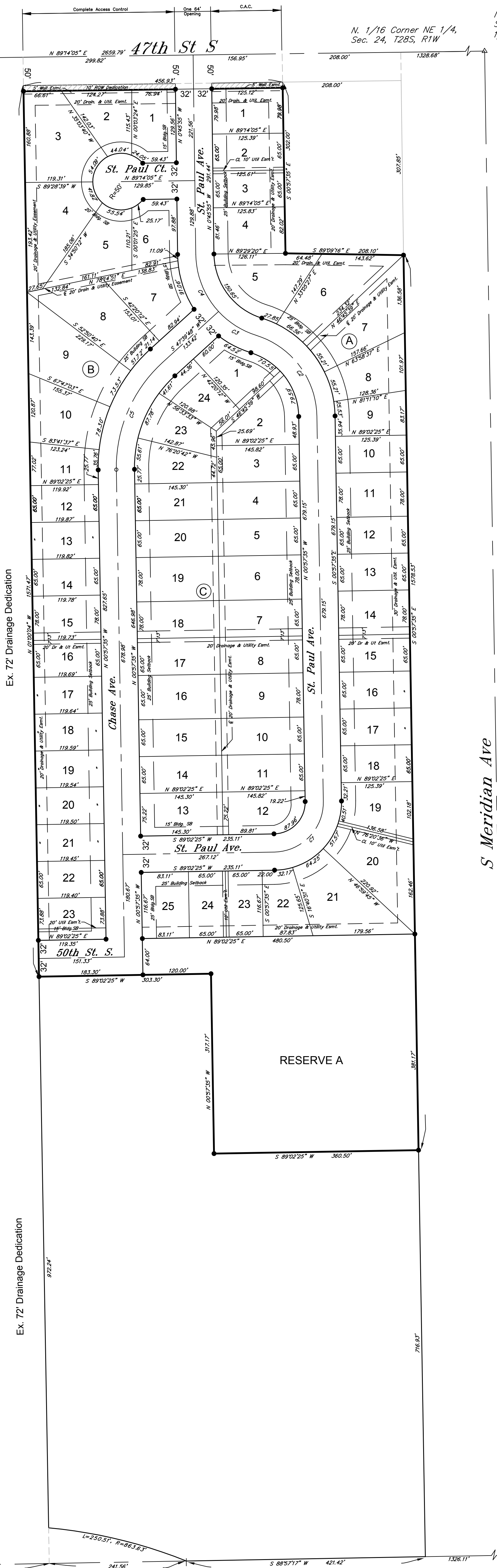


LEGEND

- 5/8" Rebar (set) KEMPA #157

| St. Paul Ave. | | | | |
|---------------|---------|---------|----------------------|----------|
| Number | Length | Radius | Line/Chord Direction | Ch. Dist |
| C1 | 138.23' | 88.00' | N 44°02'25" E | 124.45' |
| C2 | 190.31' | 152.00' | N 36°49'38" W | 178.12' |
| C3 | 79.74' | 152.00' | N 57°39'53" W | 78.83' |
| C4 | 111.08' | 152.00' | N 21°42'01" W | 108.63' |

| Chase Ave. | | | | |
|------------|---------|---------|----------------------|----------|
| Number | Length | Radius | Line/Chord Direction | Ch. Dist |
| C5 | 212.16' | 250.00' | S 23°21'07" W | 205.85' |



S 01°02'28" E 268.81'

SW Cor. NE 1/4,
Sec. 24, T28S, R1W
1/2" Rebar Baughman (found)

S. 1/16 Corner NE 1/4,
Sec. 24, T28S, R1W

SE Corner NE 1/4,
Sec. 24, T28S, R1W
1/2" Rebar (found)

17063 \XREF PLAT PHASE 1 8/03/2018

KEMILLER
ENGINEERING PA
117 E. Lewis, Wichita, KS 67202 (316)264-0242

Fox Run Addition
Wichita, Sedgwick County, Kansas
Part of the NE 1/4, Section 24, Township 28 South, Range 1 West

For
Reference
only

State of Kansas)
County of Sedgwick) SS

I, Bradley C. Ward, a licensed land surveyor of the State of Kansas, do hereby certify that the following described tract of land was surveyed on this 17th day of October, 2017 and the accompanying plat prepared and that all the monuments shown herein actually exist and their positions are correctly shown to the best of my knowledge and belief:

LEGAL DESCRIPTION

A Tract of land located in the East half of the West Half of the Northeast Quarter of Section 24, Township 28 South, Range 1 West, of the Sixth Principal Meridian, Sedgwick County, Kansas, being more particularly described as follows:

Commencing 50 feet South of the Northeast corner of said West half of the Northeast Quarter; thence S 89°14'05" W, on the South right of way line of 47th Street South, a distance of 208.00 feet, to the Point of Beginning; thence S 0°57'35" E, a distance of 302.00 feet; thence S 89°09'16" E, a distance of 208.10 feet, to the East line of the West half of the Northeast Quarter; thence S 0°57'35" E, on said East line, a distance of 1578.53 feet; thence S 89°02'25" W, a distance of 360.50 feet; thence N 0°57'35" W, a distance of 317.17 feet; thence S 89°02'25" W, a distance of 303.30 feet, to the West line of the East Half of the West Half of the Northeast Quarter; thence N 1°00'04" W, on said West line, a distance of 1571.47 feet, to the South right of way line of 47th Street South, thence N 89°14'05" E, on said South right of way line, a distance of 456.93, to the Point of Beginning. Tract contains 25.12 acres ±.

All easements and rights-of-way within said tract are hereby vacated by virtue of KSA 12-512b amended.

Bradley C. Ward, PS #920

State of Kansas)
County of Sedgwick) SS

Know all men by these presents, that we, the undersigned, have caused the land described in the surveyor's certificate to be platted into Lots, Blocks, Streets and a Reserve to be known as Fox Run Addition, Wichita, Sedgwick County, Kansas. Any street dedications shown are dedicated to and for the use of the public. The drainage and utility easements are hereby granted as indicated for drainage purposes and for the construction and maintenance of all public utilities. No signs, light poles, private drainage systems, masonry trash enclosures or other structures shall be located within public utility easements unless permitted by the Public Works Department of the appropriate governing body. The access controls are hereby granted to the appropriate governing body as shown hereon. A drainage plan has been developed for the plat and that all drainage easements, rights-of-way, and reserves shall remain at established grades or as modified with the approval of the applicable City or County Engineer, and unobstructed to allow for the conveyance of stormwater in accordance with the Stormwater Manual. FEMA floodplain and regulatory floodway boundaries are subject to periodic change and such change may affect the intended land use within the subdivision. And further that the land contained herein is held and shall be conveyed subject to any applicable restrictions, reservations and covenants now on file or hereafter filed in the Office of the Register of Deeds of Sedgwick County, Kansas. All abutter's right of access to and from 47th Street is hereby granted to the appropriate governing body as shown on the plat. Reserve A is hereby platted for drainage, stormwater detention, landscaping, and utilities confined to easements. Reserve A shall be owned and maintained by the Fox Run Home Owner's Association. The property is within a zone identified by the City Engineer's office as likely to have groundwater at some or all times within ten feet of the ground surface elevation. Building with specially engineered foundations or with the lowest floor opening above groundwater is recommended and owners seeking building permits on this property will be similarly advised. More detailed information on recorded groundwater elevations in the vicinity of this property is available in the City Engineer's office.

By: Basem Krichati, Manager, Superior Homes, LP

State of Kansas)
County of Sedgwick) SS

This instrument was acknowledged before me on this day of _____, 2018, Basem Krichati, Manager, Superior Homes, LP.

Notary Public
My Commission Expires: _____

State of Kansas)
City of Wichita) SS

This plat approved and all dedications shown hereon accepted by the City Council of the City of Wichita, Kansas, this _____ day of _____, 2018.

At the Direction of the City Council

Jeff Longwell, Mayor
Karen Sublett, City Clerk

Entered on transfer record this _____ day of _____, 2018.

Kelly B. Arnold, County Clerk

State of Kansas)
City of Wichita) SS

This plat of Fox Run Addition, Wichita, Sedgwick County, Kansas, has been submitted to and approved by the Wichita-Sedgwick County Metropolitan Area Planning Commission, Wichita, Kansas. Dated this _____ day of _____, 2018. Wichita-Sedgwick County Metropolitan Area Planning Commission.

Joseph A. Johnson, Chair
Dale Miller, Secretary

State of Kansas)
County of Sedgwick) SS

This is to certify that this plat has been filed for record in the Office of the Register of Deeds this _____ day of _____, 2018, at _____ o'clock _____ M; and is duly recorded.

Tonya Buckingham, Register of Deeds
Judy J. Paget, Deputy

Reviewed in accordance with K.S.A. 58-2005 on this _____ day of _____, 2018.

Tricia L. Robello, P.S. #1246
Deputy County Surveyor
Sedgwick County, Kansas

17063 Fox Run Addition 8/03/2018

