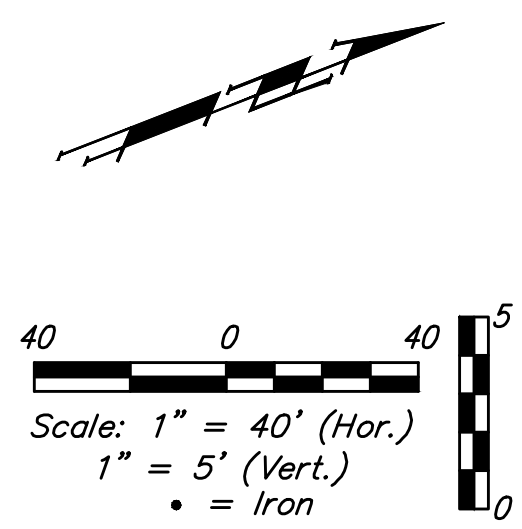
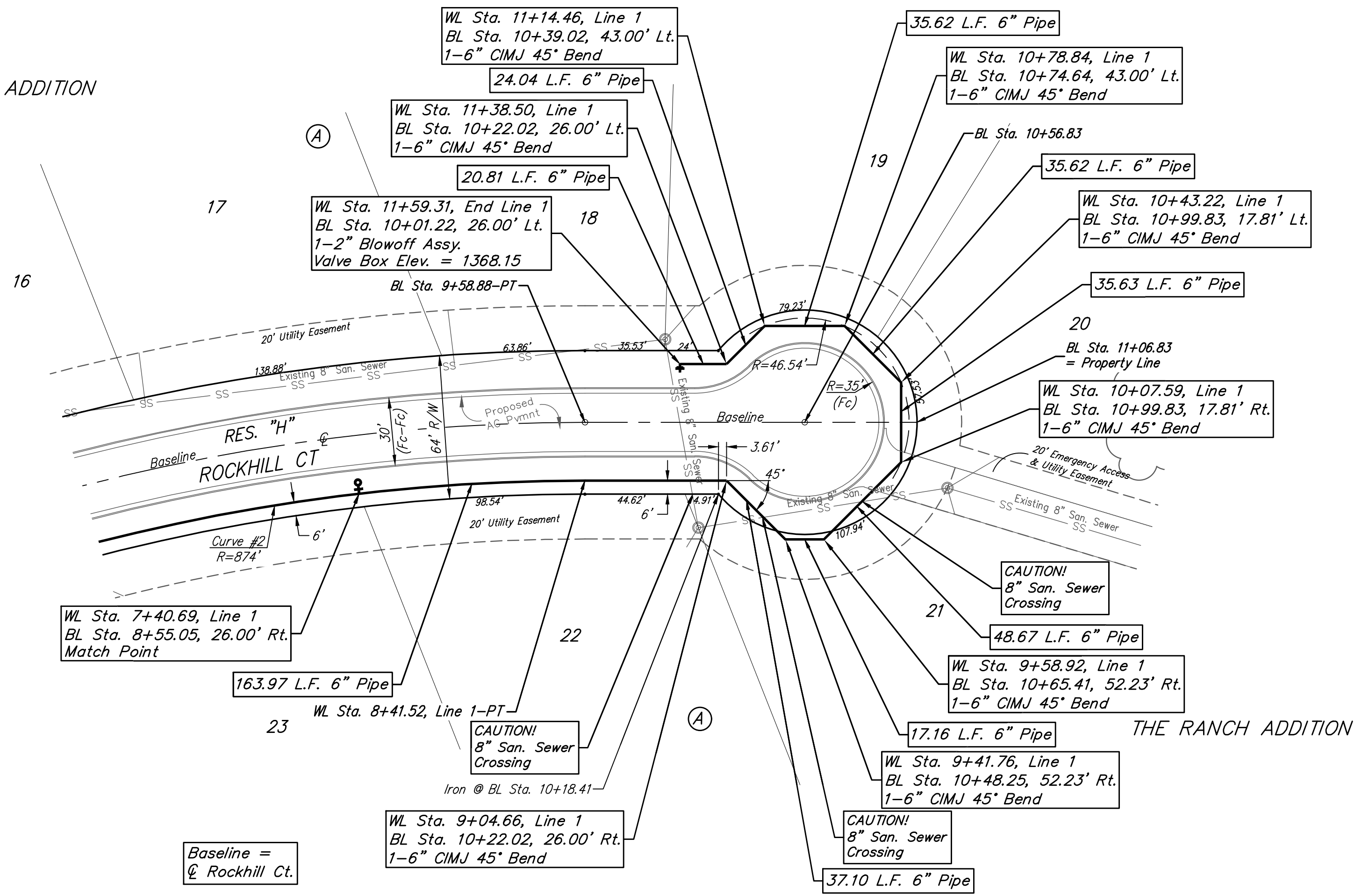


BENCHMARKS:

"□" Cut Top of Curb Adjacent to the Southeast Corner, Lot 10, Block A, The Ranch Addition.
Elev. = 1361.69 NAVD88

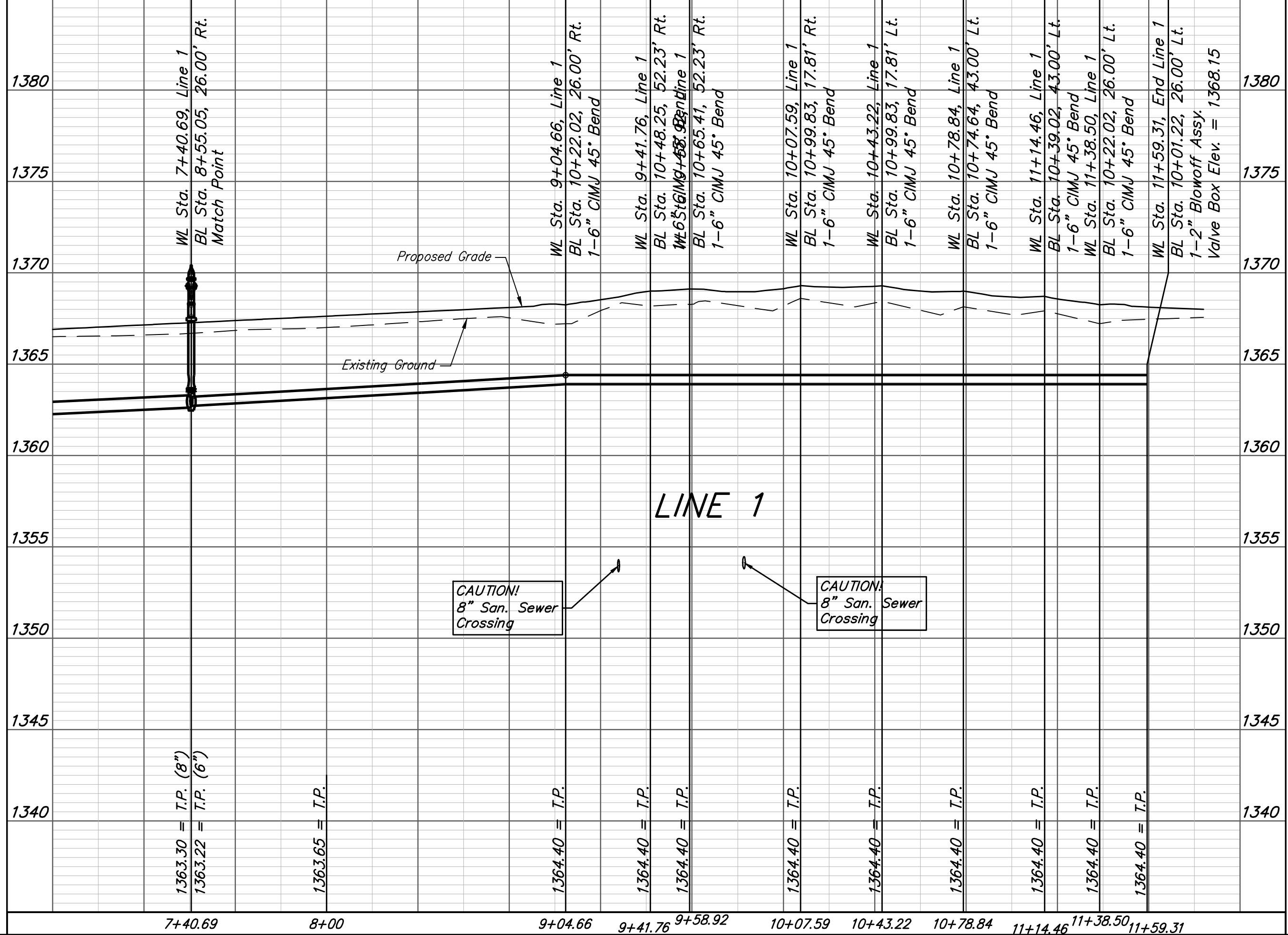
"田" Cut Top of Curb North End of North Return Rock Hill & Rock Hill Ct. West of Southwest Corner, Lot 28, Block A, The Ranch Addition.
Elev. = 1362.94 NAVD88

THE RANCH ADDITION



Curve #2
Curve Data Based on Centerline
Rad. = 874' Delta = 27°37'30" Tangent = 214.88'
Arc = 421.40' L.C. = 417.33' Def./Ft. = 1.96666 Min.

Station	Arc	Chord		Defl.	Total Defl.
		8' Left	8' Right		
4+20.12	-	-	-	0°00'00"	0°00'00"
4+25.00	4.88'	4.92'	4.84'	0°09'36"	0°09'36"
4+50.00	25.00'	25.23'	24.77'	0°49'10"	0°58'46"
4+75.00	25.00'	25.23'	24.77'	0°49'10"	1°47'56"
5+00.00	25.00'	25.23'	24.77'	0°49'10"	2°37'06"
5+25.00	25.00'	25.23'	24.77'	0°49'10"	3°26'16"
5+50.00	25.00'	25.23'	24.77'	0°49'10"	4°15'26"
5+75.00	25.00'	25.23'	24.77'	0°49'10"	5°04'36"
6+00.00	25.00'	25.23'	24.77'	0°49'10"	5°53'46"
6+25.00	25.00'	25.23'	24.77'	0°49'10"	6°42'56"
6+50.00	25.00'	25.23'	24.77'	0°49'10"	7°32'06"
6+75.00	25.00'	25.23'	24.77'	0°49'10"	8°21'16"
7+00.00	25.00'	25.23'	24.77'	0°49'10"	9°10'26"
7+25.00	25.00'	25.23'	24.77'	0°49'10"	9°59'36"
7+40.69	15.69'	15.83'	15.55'	0°30'51"	10°30'27"
7+50.00	9.31'	9.40'	9.22'	0°18'19"	10°48'46"
7+75.00	25.00'	25.23'	24.77'	0°49'10"	11°37'56"
8+00.00	25.00'	25.23'	24.77'	0°49'10"	12°27'06"
8+25.00	25.00'	25.23'	24.77'	0°49'10"	13°16'16"
8+41.52	16.52'	16.67'	16.37'	0°32'29"	13°48'45"



Baughman

The Ranch Addition - Phase II

LINE 1

Water Distribution System

Baughman Company, P.A. 315 Ellis St. Wichita, KS 67211 P 316-262-7271 F 316-262-0149
ENGINEERING | SURVEYING | PLANNING | LANDSCAPE ARCHITECTURE

PROJECT NUMBER
448-90619

DESIGN
DMV

DRAWN
JAK

REVISIONS:

APPROVED
Noted

DATE
May 26, 2020

SCALE
Noted

SHEET

5 OF 13