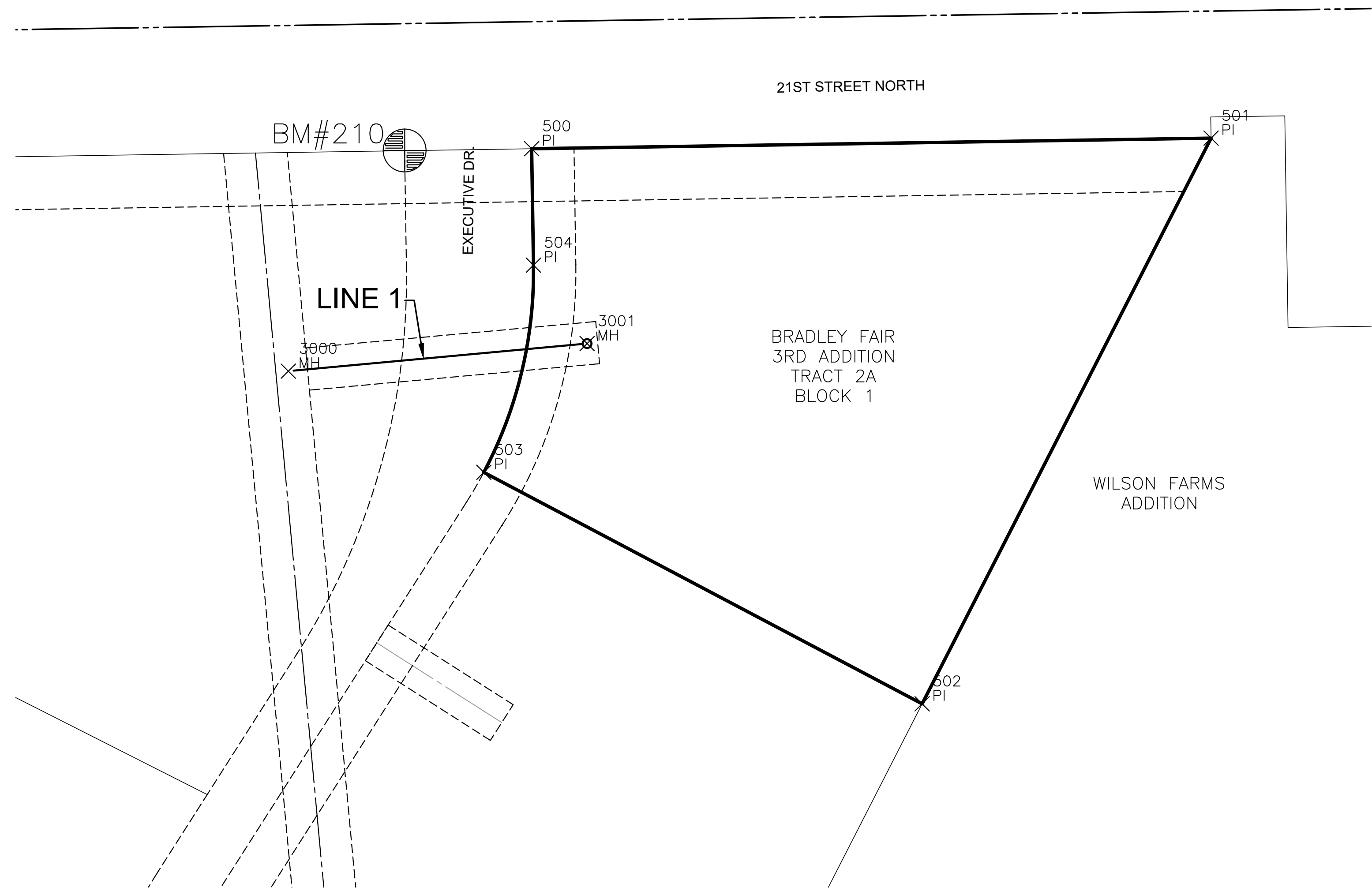


PLOTTED: Thursday, April 30, 2020 @ 03:21 PM

J:\PROJECTS\2019\1901010423\_VPE\_BRADLEY FAIR 3RD LOT SPLIT\_19423 CAD\SHS\06 CIVIL\SA\19423-05-2500.DWG



PLAT POINTS			
Point #	Northing	Easting	Desc.
500	17071.98	15354.41	PI
501	17076.97	15675.26	PI
502	16809.81	15538.78	PI
503	16919.13	15331.82	PI
504	17016.98	15355.27	PI

SANITARY POINTS			
Point #	Northing	Easting	Desc.
3000	16966.92	15239.50	MH
3001	16979.95	15380.58	MH

**BENCHMARKS**

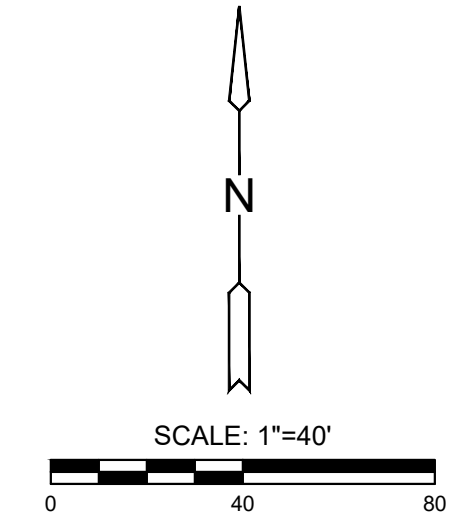
BM#210  
 N:17071.137 E:15294.459 EL:1379.317  
 FOUND "V" CUT FOR NE CORNER OF 8521 EASE  
 21ST ST. N.

**CONTROL POINTS**

CP#101  
 N:17076.944 E:15675.282 EL:1374.641  
 NE CORNER OF TRACT 2A. FOUND 5/8" MKEC BAR  
 AND CAP.

CP#102  
 N:16809.811 E:15538.755 EL:1374.311  
 SE CORNER OF TRACT 2A. SET 5/8" MKEC BAR AND  
 CAP.

CP#103  
 N:16919.129 E:15331.811 EL:1377.525  
 SW CORNER OF TRACT 2A. SET 5/8" MKEC BAR AND  
 CAP.



**DATUM**

THE HORIZONTAL DATUM IS BASED ON THE PREVIOUS LOCAL NETWORK FOR THE BRADLEY FAIR SUBDIVISION. ALL ELEVATIONS SHOWN ARE BASED ON THE NAVD 88 VERTICAL DATUM.

**NOTE**

ALL CONTROL POINTS SHOWN HAVE ELEVATIONS ESTABLISHED USING STANDARD SURVEYING PROCEDURES AND CAN BE USED AS TEMPORARY BENCHMARKS. WHEN USING A CONTROL POINT AS A TEMPORARY BENCHMARK, IT IS RECOMMENDED THAT CROSS-CHECKS BE MADE TO OTHER CONTROL POINTS OR BENCHMARKS TO CONFIRM ELEVATIONS PRIOR TO USE.

EVERY ATTEMPT HAS BEEN MADE TO INSURE ALL COORDINATE VALUES SHOWN ARE AN ACCURATE AND TRUE REPRESENTATION OF THE CURRENT PLANS. ALL VALUES ARE TO BE CONFIRMED WITH THE FINAL SIGNED PLAN SET BEFORE USE.

SANITARY SEWER PLANS FOR  
**BRADLEY FAIR THIRD ADDITION**  
 WICHITA, KANSAS

**BUBBLE MAP**

PROJECT NO.	468-2019-010208	
DATE	APRIL 2020	
SCALE	1"=40'	
DESIGNED	DRAWN	CHECKED
SPE	LM	SPE
NO.	REVISION	DATE