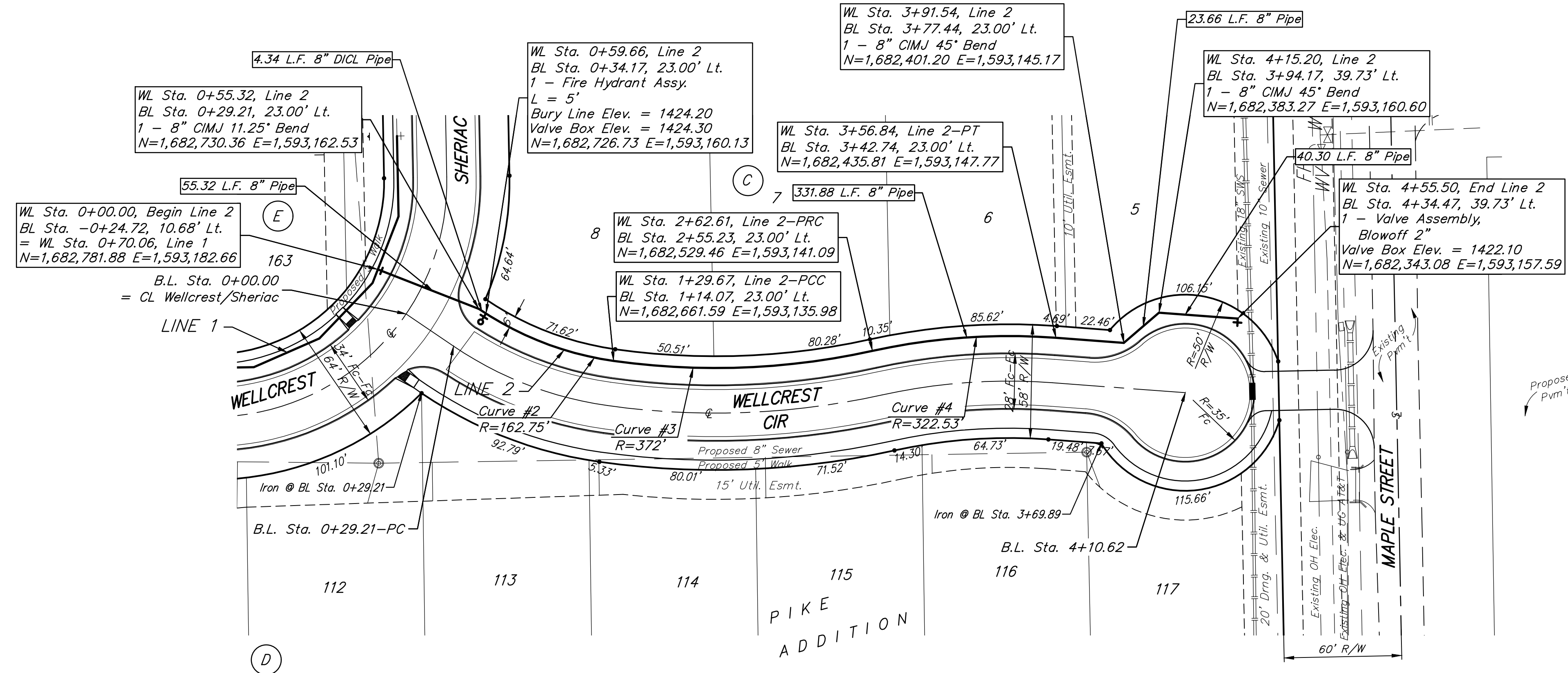
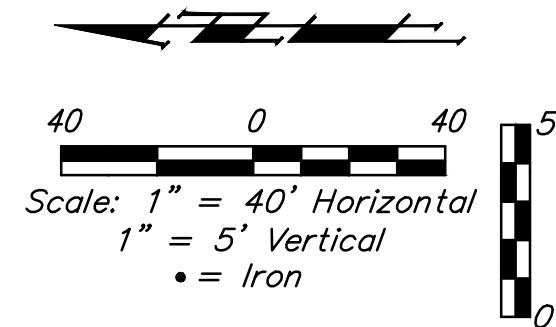


BENCHMARKS:
 BM #1: City of Wichita disc top of headwall of RCBC 660± east of the SE Cor. of the SE1/4, SEC. 22, TWP. 27-S, R-2-W. Elev. = 1410.27 NAVD88

BM #2: 60d step nail in utility pole 28' east of @ 162nd St. W. and 26' north of @ of Maple. Elev. = 1417.99 NAVD88

Baseline = CL Wellcrest Cir.

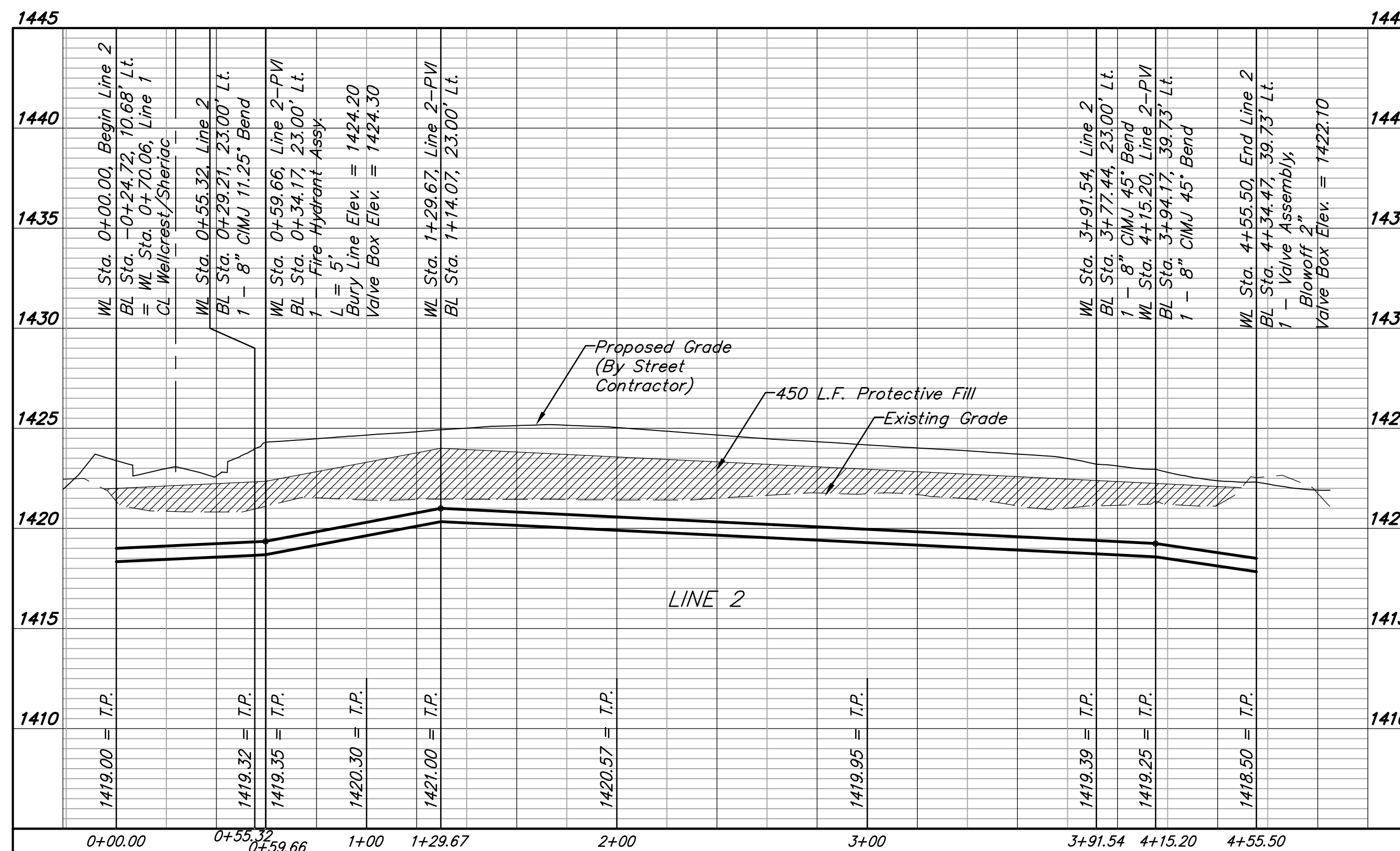


For radii under 300', contractor shall use short pipe lengths.

Curve #2				
Curve Data Based on Waterline				
Rad. = 162.75' Delta = 26°10'41" Tangent = 37.84'				
Arc = 74.35' L.C. = 73.71' Def./Ft. = 10.56277 Min.				
Chord Lengths				
Station	Arc	8' Left	Defl.	Total Defl.
0+55.32	-	-	0°00'00"	0°00'00"
0+59.66	4.34'	4.13'	0°45'51"	0°45'51"
0+75.00	15.34'	14.58'	2°42'02"	3°27'53"
1+00.00	25.00'	23.75'	4°24'04"	7°51'57"
1+25.00	25.00'	23.75'	4°24'04"	12°16'01"
1+29.67	4.67'	4.44'	0°49'19"	13°05'20"

Curve #3				
Curve Data Based on Waterline				
Rad. = 372' Delta = 20°28'31" Tangent = 67.19'				
Arc = 132.94' L.C. = 132.23' Def./Ft. = 4.62057 Min.				
Chord Lengths				
Station	Arc	8' Left	Defl.	Total Defl.
1+29.67	-	-	0°00'00"	0°00'00"
1+50.00	20.33'	19.89'	1°33'56"	1°33'56"
1+75.00	25.00'	24.46'	1°55'31"	3°29'27"
2+00.00	25.00'	24.46'	1°55'31"	5°24'58"
2+25.00	25.00'	24.46'	1°55'31"	7°20'29"
2+50.00	25.00'	24.46'	1°55'31"	9°16'00"
2+62.61	12.61'	12.34'	0°58'15"	10°14'15"

Curve #4				
Curve Data Based on Waterline				
Rad. = 322.53' Delta = 16°44'19" Tangent = 47.45'				
Arc = 94.23' L.C. = 93.89' Def./Ft. = 5.32907 Min.				
Chord Lengths				
Station	Arc	8' Left	Defl.	Total Defl.
2+62.61	-	-	0°00'00"	0°00'00"
2+75.00	12.39'	12.70'	1°06'02"	1°06'02"
3+00.00	25.00'	25.61'	2°13'13"	3°19'15"
3+25.00	25.00'	25.61'	2°13'13"	5°32'29"
3+50.00	25.00'	25.61'	2°13'13"	7°45'42"
3+56.84	6.84'	7.01'	0°36'28"	8°22'10"



JUSTINE COTTRELL
 17819
 3/29/20
 PROFESSIONAL ENGINEER

Baughman Company, P.A.
 ENGINEERING | SURVEYING | PLANNING | LANDSCAPE ARCHITECTURE
 1515 W. 16th St., Suite 100, Lawrence, KS 66044
 Phone: 785.840.1234 Fax: 785.840.1235
 www.baughmanpa.com

PIKE ADDITION - PH. II
LINE 2
 WATER DISTRIBUTION SYSTEM