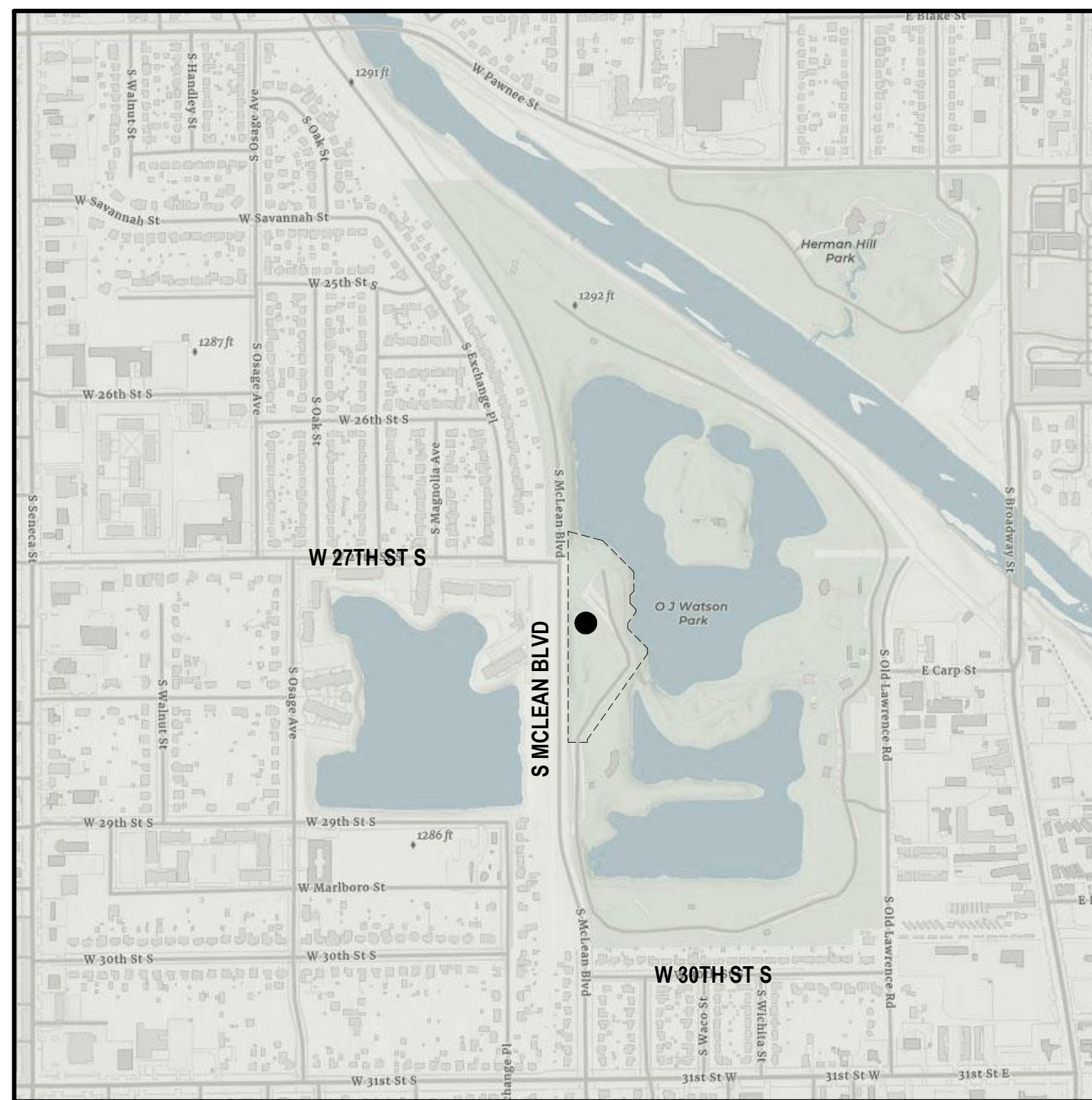


VICINITY MAP



● PROJECT LOCATION
□ PROJECT BOUNDARY
WICHITA, KS

CODE DATA

APPLICABLE CODES
2018 INTERNATIONAL BUILDING CODE
2018 INTERNATIONAL MECHANICAL CODE
2017 NATIONAL ELECTRICAL CODE
2012 INTERNATIONAL FIRE CODE
2015 UNIFORM PLUMBING CODE
2010 ADA/ABA

OCCUPANCY AND CONSTRUCTION
OCCUPANCY GROUP A-2/A-3
CONSTRUCTION TYPE VB

BUILDING HEIGHTS & AREAS
ALLOWABLE AREA
GROUP A-3/IVB = 6,000 SF
75% YARD INCREASE = 4,500 SF
TOTAL ALLOWABLE = 10,500 SF

ACTUAL AREA NOT INCLUDING ROOF OVERHANG TOTAL = 4,495 SF

ACTUAL AREA INCLUDING ROOF OVERHANG TOTAL = 5,491 SF

ALLOWABLE HEIGHT STORIES PER TABLE = 1 STORY & 40 FEET

ACTUAL HEIGHT = 1 STORY & 25 FEET

FIRE SPRINKLERS
BUILDING IS TO BE SPRINKLED WITH NFPA 13 SYSTEM.

FIRE ALARM
FIRE ALARM SHALL BE PROVIDED IN ACCORDANCE WITH IBC 907.2.1

DRAWING LEGEND

- BUILDING SECTION
- CALLOUT
- DOOR TAG
- ELEVATION TAG
- PARTITION TAG
- SECTION TAG
- SPOT ELEVATION
- WINDOW TAG
- FIRE EXTINGUISHER IN CABINET
- REQUIRED EXIT

EXIT ID	FORMULA	REQUIRED	PROVIDED
A	105 X .2 = 21"	21"	35"
B	245 X .2 = 49"	49"	96"
C	181 X .2 = 37"	37"	71"
D	180 X .2 = 36"	36"	71"
E	105 X .2 = 21"	21"	35"

PROJECT TEAM

OWNER
CITY OF WICHITA
PARK AND RECREATION DEPT.
455 MAIN
WICHITA, KS 67202
316.268.4361
CONTACT: LARRY HOETMER
EMAIL: LHoetmer@wichita.gov

ARCHITECT
SPANENBERG PHILLIPS TICE ARCHITECTURE
121 N. MEAD, SUITE 201
WICHITA, KS 67202
316.267.4002
CONTACT: BRAD TEETER
EMAIL: bteeter@spatichitecture.com

GENERAL CONTRACTOR
T.B.D.

STRUCTURAL ENGINEER
PROFESSIONAL ENGINEERING CONSULTANTS
350 S. WASHINGTON
WICHITA, KS 67202
316.262.6457
CONTACT: DENNIS COOK
EMAIL: Dennis.Cook@pec1.com

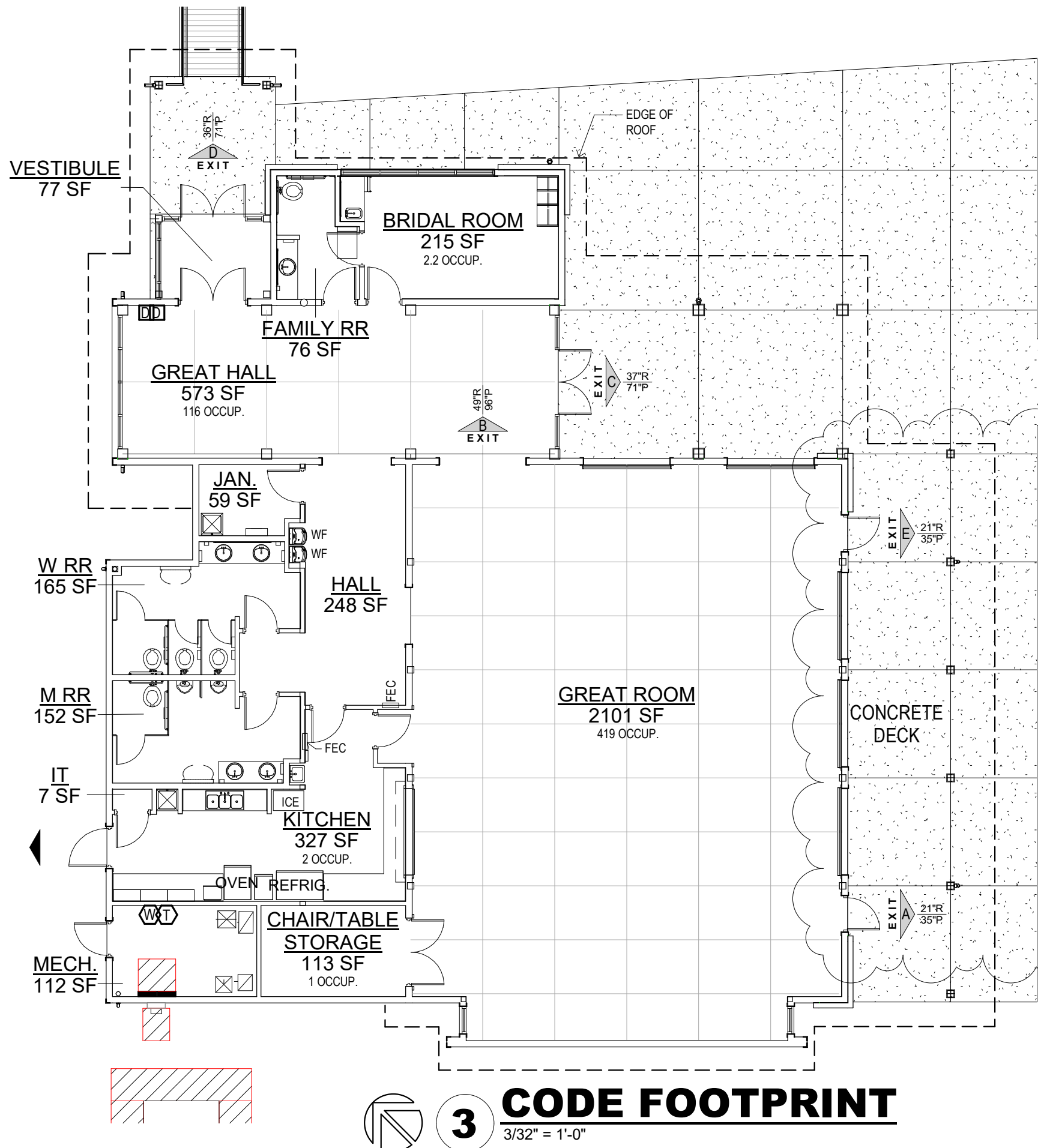
MECHANICAL ENGINEER
PROFESSIONAL ENGINEERING CONSULTANTS
350 S. WASHINGTON
WICHITA, KS 67202
316.262.6457
CONTACT: BRANDON CLAASSEN
EMAIL: Brandon.Claassen@pec1.com

ELECTRICAL ENGINEER
PROFESSIONAL ENGINEERING CONSULTANTS
350 S. WASHINGTON
WICHITA, KS 67202
316.262.6457
CONTACT: DAVID GARZA
EMAIL: David.Garza@pec1.com

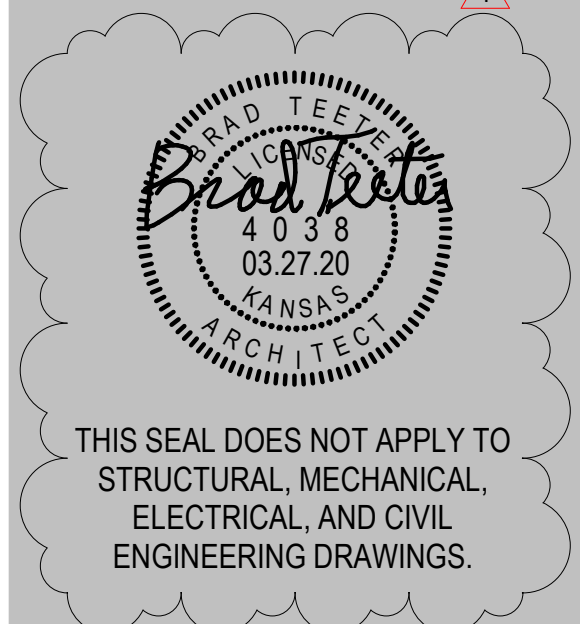
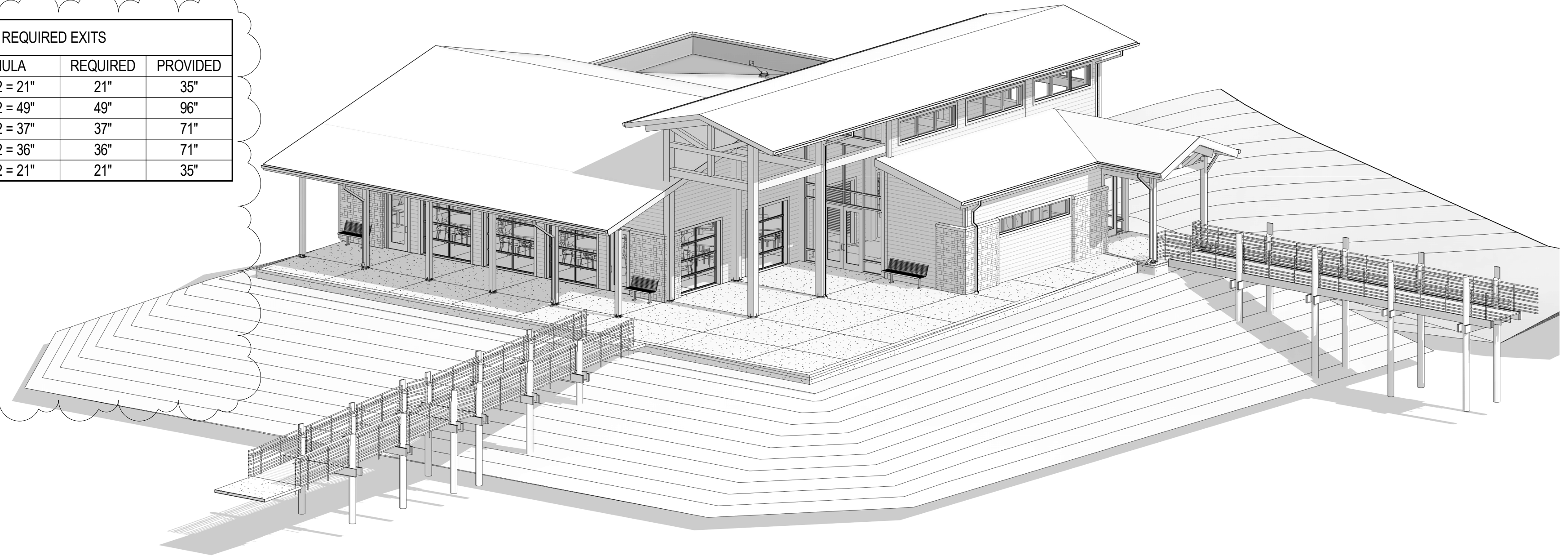
CIVIL ENGINEER
PROFESSIONAL ENGINEERING CONSULTANTS
350 S. WASHINGTON
WICHITA, KS 67202
316.262.6457
CONTACT: NICK STAIB
EMAIL: nick.staib@pec1.com

DRAWING INDEX

- ARCHITECTURAL**
- AS1.1 EXISTING OVERALL SITE PLAN
 - AS1.2 SITE PLAN
 - A1.1 FLOOR PLAN
 - A1.2 ROOF PLAN
 - A2.1 EXTERIOR ELEVATIONS
 - A2.2 EXTERIOR ELEVATIONS
 - A3.1 BUILDING SECTIONS
 - A3.2 BUILDING SECTIONS
 - A3.3 BUILDING SECTIONS
 - A4.1 WALL SECTIONS
 - A4.2 WALL SECTIONS
 - A4.3 DETAILS
 - A5.1 ENLARGED PLANS & ELEVATIONS
 - A5.2 INTERIOR ELEVATIONS
 - A6.1 ADA DETAILS
 - A7.1 REFLECTED CEILING PLAN
 - A8.1 DOOR & WINDOW SCHEDULES
 - A8.2 PARTITION TYPES
 - A9.1 FINISH SCHEDULE & MATERIALS
- STRUCTURAL**
- S-001 GENERAL NOTES
 - S-002 GENERAL NOTES
 - S-101 FOUNDATION PLAN
 - S-102 SITE BRIDGE PLANS
 - S-110 LOW ROOF FRAMING PLAN
 - S-121 HIGH ROOF FRAMING PLAN
 - S-122 HIGH ROOF FRAMING PLAN - ADD./ALT. #2
 - S-201 FRAMING ELEVATIONS AND DETAILS
 - S-202 FRAMING ELEVATION DETAILS
 - S-501 TYPICAL FOUNDATION DETAILS
 - S-502 FOUNDATION DETAILS
 - S-510 TYPICAL FRAMING DETAILS
 - S-511 TYPICAL FRAMING DETAILS
 - S-512 FRAMING DETAILS
 - S-513 TYPICAL FRAMING DETAILS
 - S-601 WOOD WALL SCHEDULES
- MECHANICAL**
- PM0.1 MECHANICAL COVERSHEET
 - P1.0 PLUMBING FLOOR PLANS
 - P7.0 PLUMBING DETAILS
 - P8.0 PLUMBING SCHEDULES
 - M1.0 MECHANICAL FLOOR PLAN
 - M2.0 MECHANICAL ROOF PLAN
 - M7.0 MECHANICAL DETAILS
 - M8.0 MECHANICAL SCHEDULES
- ELECTRICAL**
- E0.1 ELECTRICAL LEAD SHEET
 - E0.2 ELECTRICAL ONE-LINE DIAGRAM AND SCHEDULES
 - E0.3 LIGHT FIXTURE SCHEDULE
 - E1.1 ELECTRICAL DETAILS
 - E1.2 ELECTRICAL DETAILS
 - E3.1 ELECTRICAL SITE PLAN
 - E4.1 ELECTRICAL POWER PLAN
 - E4.2 ELECTRICAL POWER ROOF PLAN
 - E5.1 ELECTRICAL LIGHTING PLANS
- CIVIL**
- C-100 CIVIL SEQUENCING AND NOTES
 - C-101 (P1) PHASE 1 SITE PLAN AND GENERAL NOTES
 - V-101 (P1) PHASE 1 EXISTING CONDITIONS
 - C-102 (P1) PHASE 1 PRELOADING GRADING PLAN
 - C-103 (P1) PHASE 1 PRELOADING TYPICAL SECTIONS
 - C-104 (P1) PHASE 1 FINAL GRADING PLAN
 - C-105 (P1) PHASE 1 FINAL TYPICAL SECTIONS
 - C-106 (P1) PHASE 1 EROSION CONTROL PLAN
 - V-101 (P2) PHASE 2 EXISTING CONDITIONS
 - C-100 (P2) PHASE 2 DEMOLITION PLAN
 - C-101 (P2) PHASE 2 NORTH SITE PLAN
 - C-102 (P2) PHASE 2 SOUTH SITE PLAN
 - C-103 (P2) PHASE 2 NORTH GRADING PLAN
 - C-104 (P2) PHASE 2 SOUTH GRADING PLAN
 - C-105 (P2) PHASE 2 NORTH PAVING AND GEOMETRY PLAN
 - C-106 (P2) PHASE 2 SOUTH PAVING AND GEOMETRY PLAN
 - C-107 (P2) PHASE 2 UTILITY PLAN
 - C-108 (P2) PHASE 2 EROSION CONTROL PLAN
 - C-501 (P2) PHASE 2 PAVING DETAILS
 - C-502 (P2) PHASE 2 MISCELLANEOUS PAVING DETAILS
 - C-503 (P2) PHASE 2 EROSION CONTROL DETAILS
 - C-504 (P2) PHASE 2 EROSION CONTROL DETAILS
- FOR REFERENCE ONLY**
- L-101 (P2) PHASE 2 PLANTING PLAN
 - L-501 (P2) PHASE 2 PLANTING DETAILS



3 CODE FOOTPRINT
3/32" = 1'-0"



THIS SEAL DOES NOT APPLY TO
STRUCTURAL, MECHANICAL,
ELECTRICAL, AND CIVIL
ENGINEERING DRAWINGS.