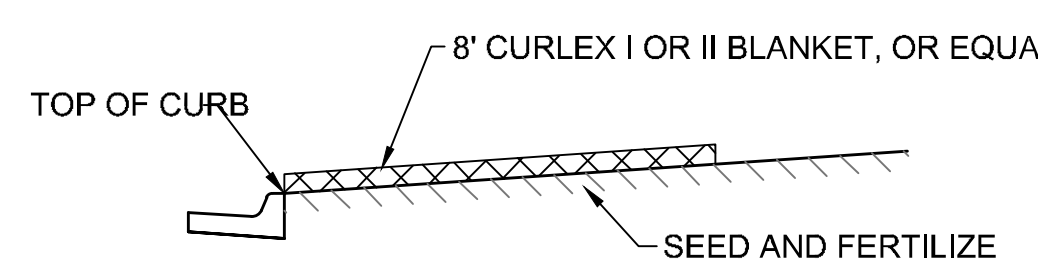
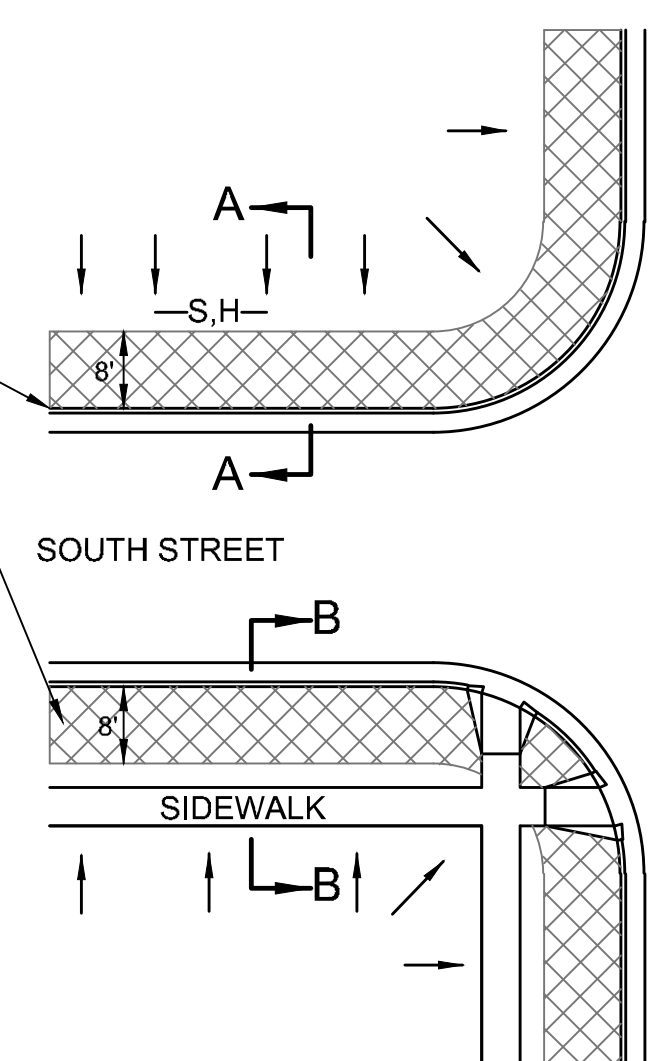


SECTION B-B



SECTION A-A

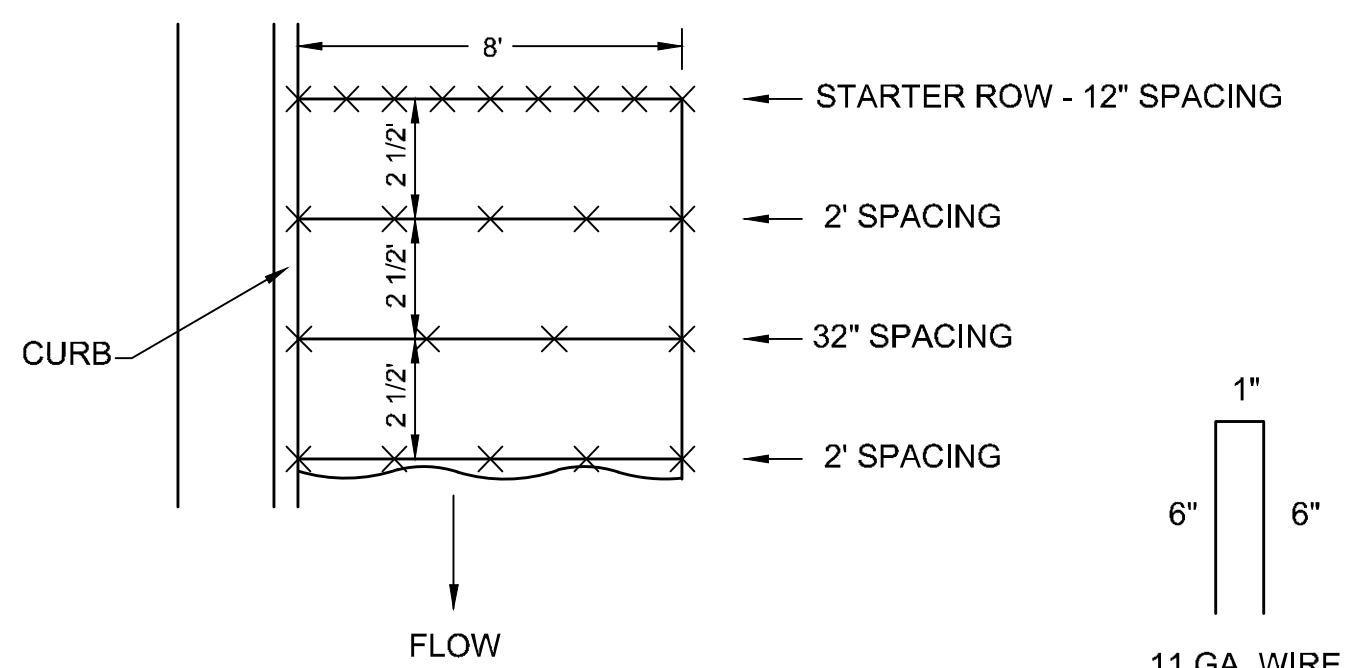
AS SPECIFIED, INSTALL 8' WIDE CURLEX I OR II EXCELSIOR BLANKET, OR EQUAL, OR BFM HYDRO-MULCH ON PREPARED SURFACE BACK OF CURB. EDGE OF BLANKET WILL BE AT BACK OF CURB. INSTALL PER MANUFACTURERS RECOMMENDATION, INCLUDING STAPLES. (SEE DETAIL BELOW)



NOTES:

- EXCELSIOR MAT OR BFM HYDRO-MULCH TO BE INSTALLED WHEN SOD IS NOT SPECIFIED ON PROJECT.
- EXCELSIOR MAT OR BFM HYDRO-MULCH TO BE INSTALLED OVER SEED AND FERTILIZER.
- AFTER INSTALLATION OF EXCELSIOR MAT OR BFM HYDRO-MULCH, AT LOCATIONS WHERE CONCENTRATED FLOW CARRIES SEDIMENT OVER THE CURB AND INTO THE GUTTER, SUPPLEMENTAL EROSION CONTROL DEVICES WILL BE INSTALLED BY THE CONTRACTOR AS REQUIRED.

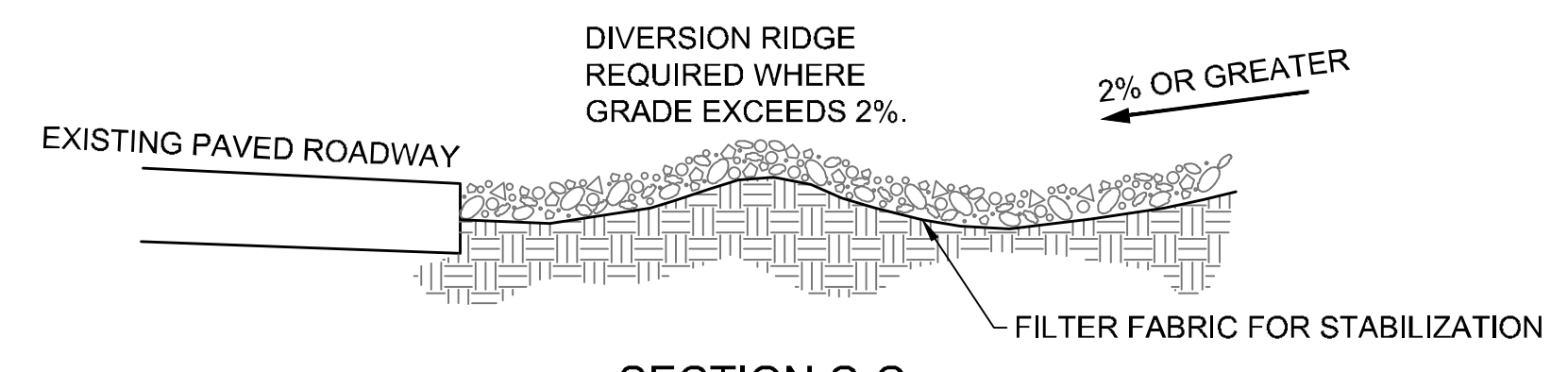
**BACK OF CURB PROTECTION DETAIL**



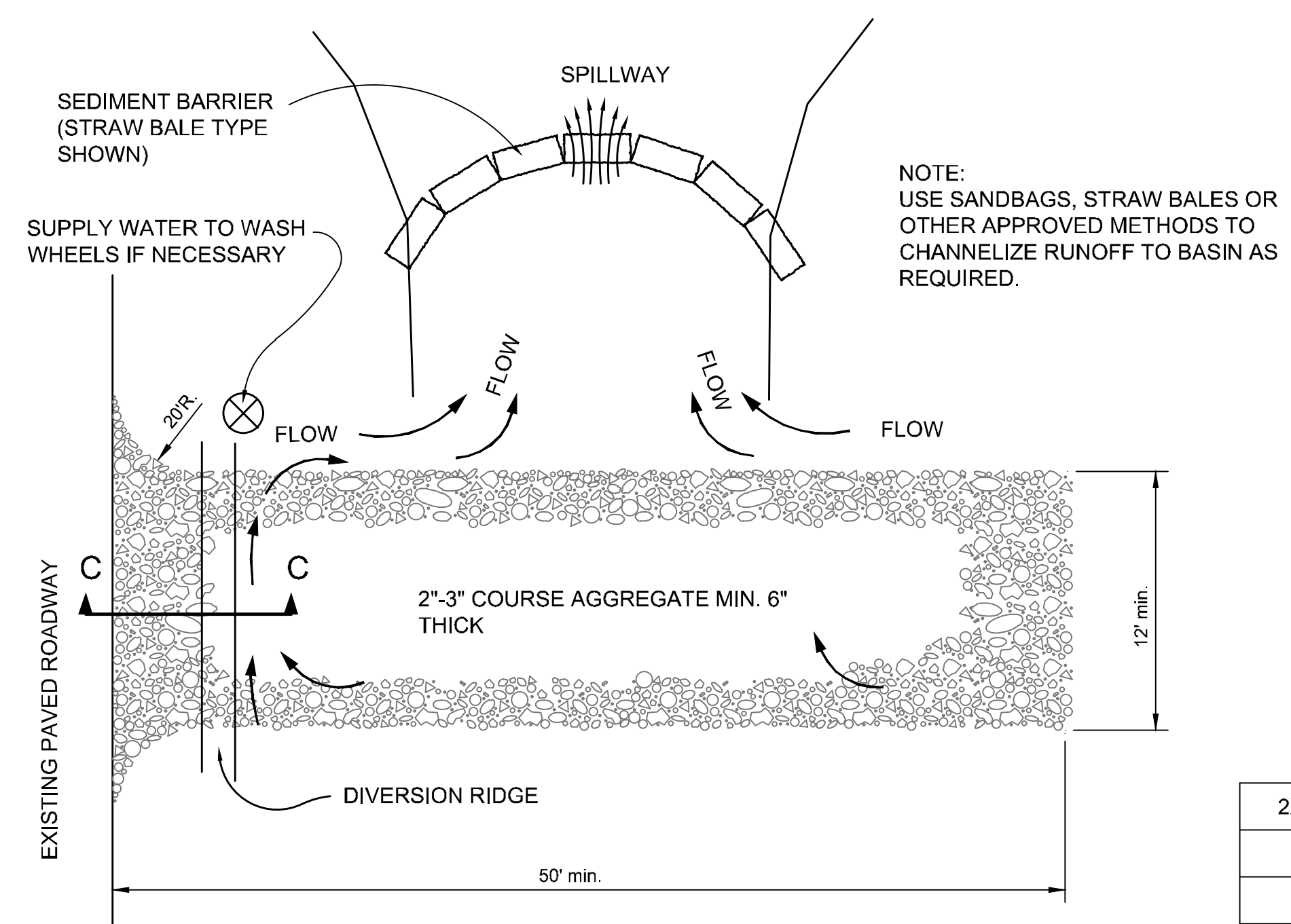
**STAPLE PATTERN**

NOTE: USE 6" SEAM OVERLAP

**DETAILS FOR CURLEX I OR II BLANKETS**



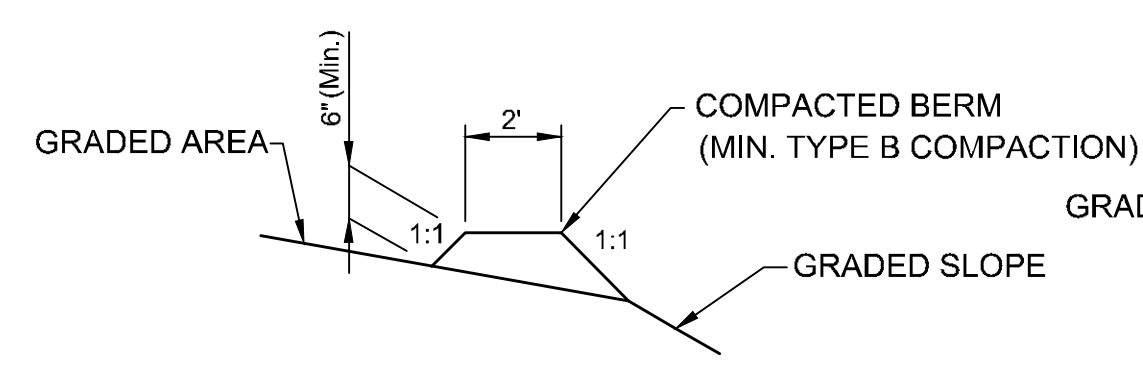
SECTION C-C



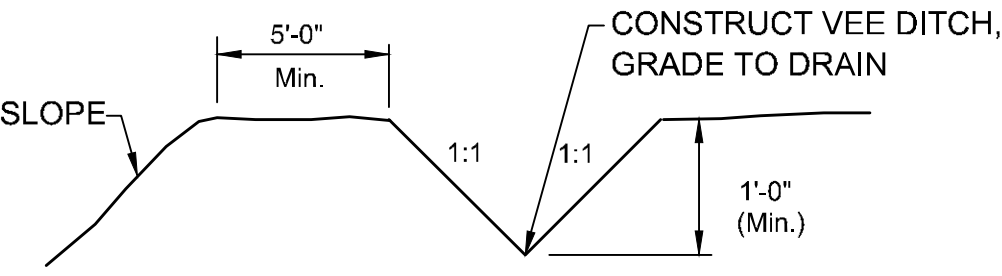
**STABILIZED CONSTRUCTION ENTRANCE**

NOTES:

- THE ENTRANCE SHALL BE MAINTAINED IN A CONDITION THAT WILL PREVENT TRACKING OR FLOWING OF SEDIMENT ONTO PUBLIC RIGHTS-OF-WAY. THIS MAY REQUIRE TOP DRESSING, REPAIR AND/OR CLEANOUT OF ANY MEASURES USED TO TRAP SEDIMENT.
- WHEN NECESSARY, WHEELS SHALL BE CLEANED PRIOR TO ENTRANCE ONTO PUBLIC RIGHT-OF-WAY.
- WHEN WASHING IS REQUIRED, IT SHALL BE DONE ON AN AREA STABILIZED WITH CRUSHED STONE THAT DRAINS INTO AN APPROVED SEDIMENT TRAP OR SEDIMENT BASIN, AS SHOWN ABOVE.
- DRIVE ENTRANCES ONTO RESIDENTIAL LOTS WILL NOT BE REQUIRED TO HAVE THE SEDIMENT BARRIER SHOWN, BUT WHEEL WASHING MAY BE REQUIRED IF STABILIZED ENTRANCE IS NOT SUFFICIENT TO KEEP MUD FROM BEING TRACKED ONTO ADJACENT STREET. ENTRANCE SHALL EXTEND FROM BACK OF CURB TO DWELLING.



BERM DETAIL



INTERCEPT DITCH DETAIL

**TEMPORARY EROSION CONTROL DETAILS FOR SLOPE PROTECTION**

NOTE: THE ENGINEER MAY DETERMINE THAT THE HEIGHT OF BERM OR DEPTH OF DITCH SHOULD BE INCREASED OVER THAT SHOWN IF DRAINAGE CONDITIONS ARE

**GENERAL EROSION CONTROL NOTES**

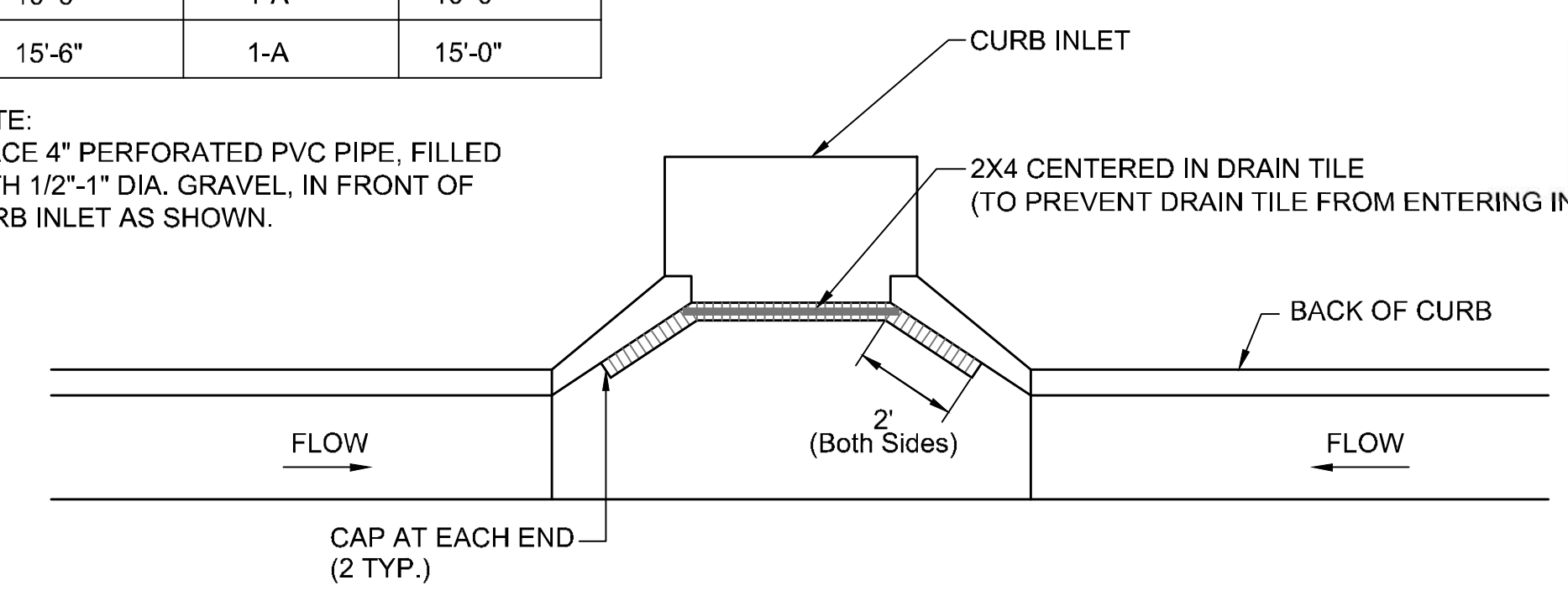
- SEDIMENT BARRIERS SHALL BE INSTALLED AT LOCATIONS SHOWN ON THE PLANS OR AS DIRECTED BY THE ENGINEER. ADDITIONAL SEDIMENT BARRIERS WILL BE INSTALLED AT LOCATIONS AS DIRECTED BY THE ENGINEER WITH NO ADJUSTMENT IN UNIT PRICE.
- SEDIMENT BARRIERS SHALL BE ERECTED PRIOR TO THE COMMENCEMENT OF EARTHWORK OPERATIONS IN A GIVEN BASIN. REMOVAL AND DISPOSAL OF ACCUMULATED SILT AND DEBRIS AND/OR REMOVAL AND RECONSTRUCTION OF SEDIMENT BARRIERS WILL BE PERFORMED THROUGHOUT THE PROJECT LIFE WHEN DEBRIS REACHES ONE-THIRD THE FENCE HEIGHT OR AS DEEMED NECESSARY BY THE ENGINEER. SEDIMENT BARRIERS AND ACCUMULATED DEBRIS SHALL BE REMOVED AND DISPOSED OF BY THE CONTRACTOR AFTER TURF COVER HAS BEEN ESTABLISHED, UNLESS OTHER ARRANGEMENTS HAVE BEEN AGREED TO.
- TEMPORARY EROSION CONTROL BERMS AND/OR INTERCEPT DITCHES SHALL BE CONSTRUCTED AT LOCATIONS SHOWN ON THE PLANS OR AS DIRECTED BY THE ENGINEER. ADDITIONAL BERMS AND/OR DITCHES MAY BE REQUIRED AT NO ADJUSTMENT IN UNIT PRICE(S).

WHERE TEMPORARY EROSION CONTROL BERMS AND/OR INTERCEPT DITCHES ARE USED, ALL AREAS WHERE FLOW IS CONCENTRATED SHALL BE PROTECTED BY SILTATION BARRIERS PRIOR TO DISCHARGING INTO ANY DITCH, STORM SEWER, OR WATERCOURSE.

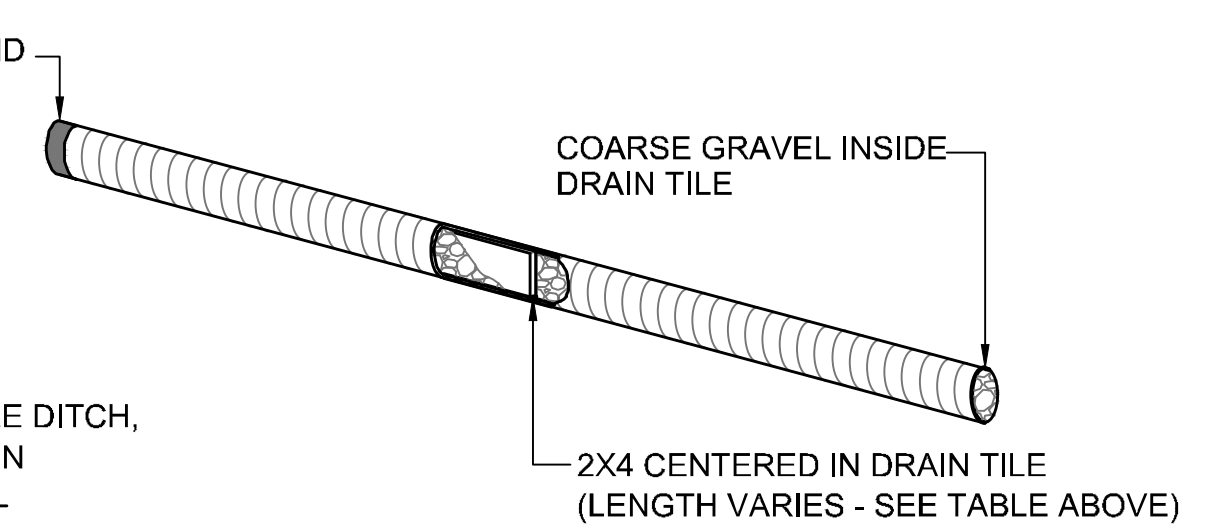
RECONSTRUCTION OF EROSION CONTROL MEASURES WHICH ARE DESTROYED BY WIND, FLOOD, FIRE, OR BY THE ACTIONS OF THE CONTRACTOR OR OTHERS SHALL BE PERFORMED BY THE CONTRACTOR AS DIRECTED BY THE ENGINEER AT NO ADDITIONAL COST. WHERE ADJUSTMENTS IN QUANTITIES ARE REQUIRED BY FIELD CONDITIONS, THERE SHALL BE NO ADJUSTMENT IN UNIT PRICE.

2X4 LENGTH	INLET TYPE	INLET OPENING
5'-6"	1-A	5'-0"
10'-6"	1-A	10'-0"
15'-6"	1-A	15'-0"

NOTE: PLACE 4" PERFORATED PVC PIPE, FILLED WITH 1/2"-1" DIA. GRAVEL, IN FRONT OF CURB INLET AS SHOWN.



**CURB INLET PROTECTION 4" PERFORATED PIPE W/ GRAVEL**



Saved: 03-26-2020 9:05:23 AM by: BET  
 Plot Scale: 1" = 10'-0" (2020 4:35:42 PM by: BET  
 U:\Wichita-Civil\2019\197042\010\Main Drawings\PLANS\197042-010-P2-C-503



CITY REVIEW  
 COMMENTS  
 FOR  
 CONSTRUCTION

30 MARCH 20

C-503(P2)