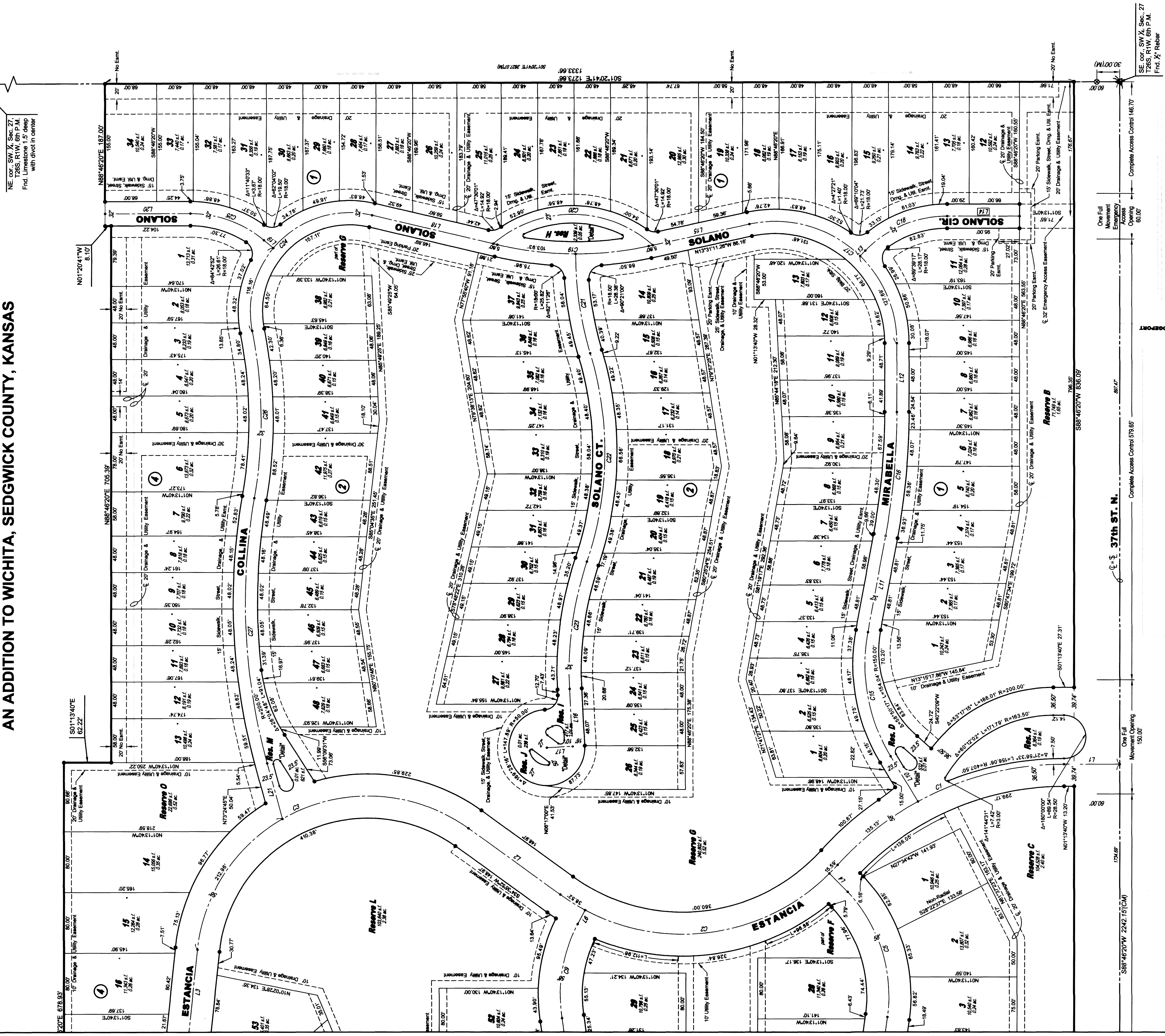
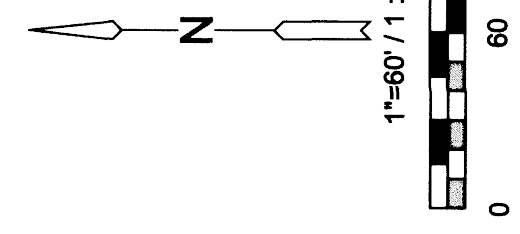


FINAL PLAT ESTANCIA ADDITION AN ADDITION TO WICHITA, SEDGWICK COUNTY, KANSAS

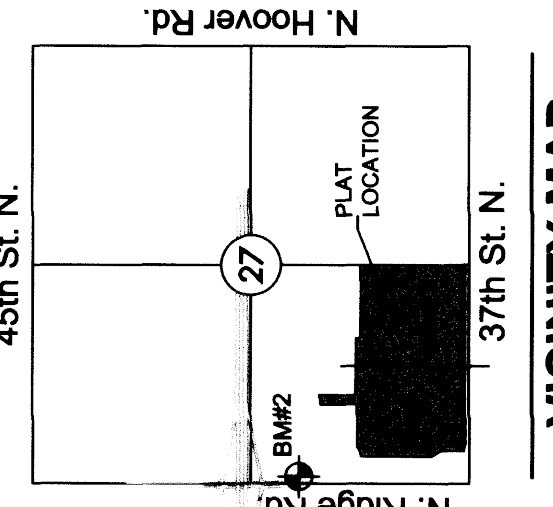


NE 1/4 SW 1/4 Sec. 27,
T26S, R1W, 6th P.M.
Fnd. Limestone 1.5' deep
with divot in center



LEGEND
 Date of Survey: April 23, 2015
 Δ = Section corner monument found
 ○ = Found 3/4 rebar w/ MKEC CLS 39 ft. cap
 ⊙ = Set 3/4 rebar w/ MKEC CLS 39 ft. cap
 (M) = Measured
 (CM) = Calculated from measured
 (D) = Described
 ⊕ = Benchmark
 U.E. = Utility Easement
 D.E. = Drainage Easement

MINIMUM PAD ELEVATIONS (LOWEST AREAS)	BLOCK ELEVATION	MIN. PAD
1-4B	2	1334.1
5, 6, 13, 14	4	1334.1



Basis of Bearing: Kansas coordinate system of 1983 south zone grid bearing of N88°46'20"E on the south of the SW 1/4, Sec. 27, T26S, R1W, 6th P.M.
 This plat is surveyed and platted on NAD83 using Kansas state plane south zone coordinates, modified to the surface, having a combined adjustment scale factor of 1.00020014401728

BENCHMARK
 Square cut top of curb on west side of median island and 10 feet north of the south end of said median lying south of K-96 and Ridge Rd. being 338 feet S. of the NW corner SW 1/4, Sec. 27, T26S, R1W, 6th P.M.)
 Elev. = 1335.00 NAVD83

