

J:\PROJECTS\2017\1401010402_2\PREMIER_ESTANCIA\DWG\CIVIL\DWG\RESIDENTIAL\PR3B11402_RES_CB_01_P18B.DWG
 PLOTTED: Friday, June 05, 2020 @ 11:57AM



CONTROL POINTS

DATUM:
 1) The Project Horizontal Datum is based on the NAD83, Kansas State Plane Coordinate System, South Zone, (US Survey Feet Definition), with a Combined Adjustment Factor (CAF) of 1.000120014. All coordinate and dimensions shown on these plans are modified to Ground values.

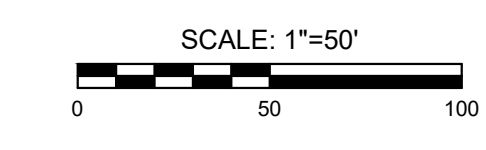
The following equations can be used for conversion:
 Ground Coordinates to State Plane Coordinates = Ground x 1/CAF
 State Plane Coordinates to Ground Coordinates = State Plane x CAF

2) The Vertical Datum used is NAVD88.

CONTROL:

| Pl. No. | North | East | Elev. | Description |
|---------|-------------|-------------|----------|--|
| 50 | 1711490.124 | 1624127.580 | 1335.951 | 5/8" rebar w/ 2" aluminum MKEC ID cap |
| 51 | 1711268.791 | 1625517.702 | 1337.043 | 5/8" rebar w/ 2" aluminum MKEC ID cap |
| 52 | 1710171.016 | 1625356.019 | 1334.120 | Chiseled "X" on the corner of a chiseled square |
| 53 | 1710142.067 | 1624443.448 | 1333.497 | City of Wichita Disc |
| 54 | 1710213.104 | 1623405.099 | 1332.494 | 5/8" rebar w/ 2" aluminum MKEC ID cap |
| 55 | 1710866.554 | 1623388.674 | 1332.710 | 5/8" rebar w/ 2" aluminum MKEC ID cap |
| 56 | 1710879.252 | 1623983.524 | 1333.391 | 5/8" rebar w/ 2" aluminum MKEC ID cap |
| 57 | 1710607.210 | 1625354.120 | 1334.48 | PK-Nail w/ MKEC ID washer drilled into top of curb |
| 58 | 1710768.550 | 1624579.040 | 1333.63 | PK-Nail w/ MKEC ID washer drilled into top of curb |

UTILITIES:
 The underground utilities shown hereon were marked in the field by the utility owners in response to Kansas One Call Ticket Numbers: 17124313, 17124360, 18165399, 18165406, and 18165411. The surveyor makes no guarantee that the underground utilities shown comprise all such utilities in the area, either in service or abandoned. The surveyor further does not warrant that the underground utilities shown are in the exact location indicated although he does certify that they are located as accurately as possible from information available. The surveyor has not physically located the underground utilities.



| PLAT POINTS | | | |
|-------------|------------|------------|-------|
| Point # | Northing | Easting | Desc. |
| 500 | 1710968.02 | 1625399.69 | PI |
| 502 | 1710967.33 | 1625367.70 | PI |
| 509 | 1710455.21 | 1625338.27 | PI |
| 510 | 1710620.23 | 1625373.56 | PI |
| 511 | 1710379.97 | 1625328.49 | PI |
| 513 | 1710362.90 | 1625312.10 | PI |
| 540 | 1710255.13 | 1625378.27 | PI |
| 552 | 1710314.35 | 1625329.99 | PI |
| 553 | 1710330.58 | 1625310.28 | PI |
| 555 | 1710248.81 | 1625340.88 | PI |
| 556 | 1710747.72 | 1625011.78 | PI |
| 557 | 1710755.37 | 1625237.41 | PI |
| 572 | 1710341.80 | 1625208.98 | PI |
| 588 | 1710311.38 | 1625218.90 | PI |
| 604 | 1709986.55 | 1625379.64 | PI |
| 608 | 1710124.38 | 1625403.70 | PI |
| 610 | 1709965.02 | 1625380.96 | PI |
| 616 | 1709766.23 | 1625422.35 | PI |
| 620 | 1709861.20 | 1625420.32 | PI |
| 649 | 1709937.33 | 1625145.08 | PI |
| 650 | 1709939.27 | 1625235.67 | PI |
| 651 | 1709948.51 | 1624984.70 | PI |
| 657 | 1709765.54 | 1625390.36 | PI |
| 658 | 1710116.90 | 1625372.59 | PI |
| 674 | 1710717.33 | 1624704.08 | PI |
| 676 | 1710676.64 | 1624643.40 | PI |
| 677 | 1710756.17 | 1624666.69 | PI |

| PLAT POINTS | | | |
|-------------|------------|------------|-------|
| Point # | Northing | Easting | Desc. |
| 702 | 1710340.34 | 1624944.70 | PI |
| 703 | 1710360.40 | 1624770.79 | PI |
| 707 | 1710359.85 | 1624763.38 | PI |
| 708 | 1710376.47 | 1624744.09 | PI |
| 718 | 1710372.77 | 1624694.23 | PI |
| 733 | 1710328.49 | 1624773.16 | PI |
| 735 | 1710309.80 | 1624935.13 | PI |
| 737 | 1710457.10 | 1624609.91 | PI |
| 738 | 1710334.47 | 1624525.32 | PI |
| 750 | 1709678.19 | 1624658.41 | PI |
| 784 | 1709680.97 | 1624788.38 | PI |
| 785 | 1709969.07 | 1624857.85 | PI |
| 786 | 1709933.43 | 1624683.98 | PI |
| 788 | 1709913.18 | 1624652.04 | PI |
| 789 | 1709934.41 | 1624635.14 | PI |
| 801 | 1709952.22 | 1624533.91 | PI |
| 804 | 1710008.43 | 1624567.24 | PI |
| 809 | 1710322.77 | 1624691.94 | PI |
| 845 | 1709708.28 | 1624787.80 | PI |
| 846 | 1709866.85 | 1624703.94 | PI |
| 847 | 1709885.68 | 1624719.95 | PI |
| 849 | 1709936.60 | 1624858.24 | PI |
| 850 | 1709916.93 | 1624979.58 | PI |
| 851 | 1709905.33 | 1625145.77 | PI |
| 852 | 1709907.28 | 1625236.35 | PI |
| 853 | 1709941.39 | 1625336.77 | PI |
| 855 | 1709937.62 | 1625361.87 | PI |

| PLAT POINTS | | | |
|-------------|------------|------------|-------|
| Point # | Northing | Easting | Desc. |
| 856 | 1709860.52 | 1625388.32 | PI |
| 857 | 1710240.86 | 1625375.70 | PI |
| 859 | 1710449.83 | 1625375.81 | PI |
| 861 | 1710464.03 | 1625372.88 | PI |
| 862 | 1710613.54 | 1625404.85 | PI |
| 863 | 1710737.02 | 1625374.67 | PI |
| 865 | 1710758.60 | 1625373.66 | PI |
| 867 | 1710855.80 | 1625402.32 | PI |
| 882 | 1710994.65 | 1624116.17 | PI |
| 892 | 1710995.90 | 1624174.36 | PI |
| 979 | 1710355.28 | 1623524.41 | PI |
| 984 | 1710704.11 | 1623496.20 | PI |
| 985 | 1710735.56 | 1623535.06 | PI |
| 986 | 1710677.67 | 1623538.63 | PI |
| 1004 | 1709915.15 | 1623519.64 | PI |
| 1043 | 1710835.86 | 1624214.74 | PI |
| 1044 | 1710827.62 | 1624207.43 | PI |
| 1046 | 1710739.52 | 1623964.85 | PI |
| 1048 | 1710748.80 | 1623749.94 | PI |
| 1049 | 1710690.91 | 1623753.51 | PI |
| 1050 | 1710682.15 | 1623956.31 | PI |
| 1051 | 1710789.12 | 1624250.80 | PI |
| 1052 | 1710811.78 | 1624270.92 | PI |
| 1053 | 1710805.53 | 1624307.41 | PI |
| 1054 | 1710796.68 | 1624416.66 | PI |
| 1055 | 1710490.03 | 1624562.17 | PI |
| 1056 | 1710367.41 | 1624477.58 | PI |

| PLAT POINTS | | | |
|-------------|------------|------------|-------|
| Point # | Northing | Easting | Desc. |
| 1057 | 1710356.01 | 1624470.09 | PI |
| 1059 | 1710373.71 | 1624333.99 | PI |
| 1061 | 1710380.15 | 1624103.80 | PI |
| 1063 | 1710388.40 | 1623717.11 | PI |
| 1065 | 1710379.86 | 1623567.95 | PI |
| 1066 | 1710322.16 | 1623561.86 | PI |
| 1067 | 1710331.43 | 1623727.97 | PI |
| 1068 | 1710323.69 | 1624090.52 | PI |
| 1069 | 1710316.59 | 1624344.09 | PI |
| 1070 | 1710304.09 | 1624444.15 | PI |
| 1071 | 1709997.25 | 1624496.76 | PI |
| 1072 | 1709993.08 | 1624492.73 | PI |
| 1074 | 1709945.59 | 1624353.19 | PI |
| 1076 | 1709940.41 | 1624073.92 | PI |
| 1078 | 1709939.28 | 1623782.13 | PI |
| 1080 | 1709947.72 | 1623557.59 | PI |
| 1081 | 1709889.94 | 1623562.82 | PI |
| 1082 | 1709881.91 | 1623773.64 | PI |
| 1083 | 1709883.10 | 1624082.85 | PI |
| 1084 | 1709887.99 | 1624346.38 | PI |
| 1085 | 1709956.66 | 1624538.19 | PI |
| 1086 | 1709691.38 | 1624658.13 | PI |
| 1087 | 1710863.34 | 1624312.09 | PI |
| 1088 | 1710854.49 | 1624421.34 | PI |
| 1089 | 1710740.32 | 1624613.42 | PI |
| 1090 | 1710754.61 | 1624661.38 | PI |
| 1091 | 1710779.36 | 1625016.58 | PI |

| PLAT POINTS | | | |
|-------------|------------|------------|-------|
| Point # | Northing | Easting | Desc. |
| 1092 | 1710786.61 | 1625230.48 | PI |
| 1093 | 1710774.82 | 1625327.05 | PI |
| 1095 | 1710781.48 | 1625350.37 | PI |
| 1096 | 1710855.05 | 1625370.33 | PI |

| PAVING POINTS | | | |
|---------------|------------|------------|-------|
| Point # | Northing | Easting | Desc. |
| 5000 | 1710825.59 | 1624419.00 | PT |
| 5001 | 1710834.44 | 1624309.75 | PC |
| 5002 | 1710845.08 | 1624261.71 | PI |
| 5003 | 1710995.27 | 1624145.25 | PI |
| 5004 | 1710846.89 | 1624257.02 | END |
| 5005 | 1710833.90 | 1624251.79 | PI |
| 5006 | 1710808.37 | 1624229.12 | PC |
| 5007 | 1710710.83 | 1623960.58 | PRC |
| 5008 | 1710719.85 | 1623751.72 | PT |

| WATER POINTS | | | |
|--------------|------------|------------|--------|
| Point # | Northing | Easting | Desc. |
| 3000 | 1710850.99 | 1624390.19 | TIE IN |
| 3001 | 1710857.36 | 1624311.61 | PC |
| 3002 | 1710861.96 | 1624284.55 | TEE |
| 3003 | 1710995.77 | 1624168.33 | PI |
| 3004 | 1710825.38 | 1624274.98 | PI |
| 3005 | 1710813.48 | 1624264.41 | FH |
| 3006 | 1710793.10 | 1624246.32 | PC |
| 3007 | 1710688.08 | 1623957.19 | PRC |
| 3008 | 1710696.90 | 1623753.14 | PT |
| 3009 | 1710694.59 | 1623715.74 | FH |
| 3010 | 1710683.19 | 1623530.73 | PI |
| 3011 | 1710665.47 | 1623515.06 | PI |
| 3012 | 1710663.44 | 1623482.21 | PI |
| 3013 | 1710685.24 | 1623457.56 | PI |
| 3014 | 1710718.09 | 1623455.53 | PI |
| 3015 | 1710742.75 | 1623477.33 | PI |
| 3016 | 1710744.77 | 1623510.18 | BO |

EVERY ATTEMPT HAS BEEN MADE TO INSURE ALL COORDINATE VALUES SHOWN ARE AN ACCURATE AND TRUE REPRESENTATION OF THE CURRENT PLANS. ALL VALUES ARE TO BE CONFIRMED WITH THE FINAL SIGNED PLAN SET BEFORE USE.



WATER DISTRIBUTION PLANS FOR
ESTANCIA ADDITION
 PHASE 3B

©2020 MKEC Engineering All Rights Reserved www.mkec.com
 These drawings and their contents, including, but not limited to, all concepts, designs, & ideas are the exclusive property of MKEC Engineering (MKEC), and may not be used or reproduced in any way without the express consent of MKEC.

BUBBLE MAP

| | | |
|-------------|----------------|---------|
| PROJECT NO. | 448-2020-90916 | |
| DATE | MAY 2020 | |
| SCALE | 1"=50' | |
| DESIGNED | DRAWN | CHECKED |
| MKB | LM | SPE |

NO. REVISION DATE

SHEET NO.
06 OF 13