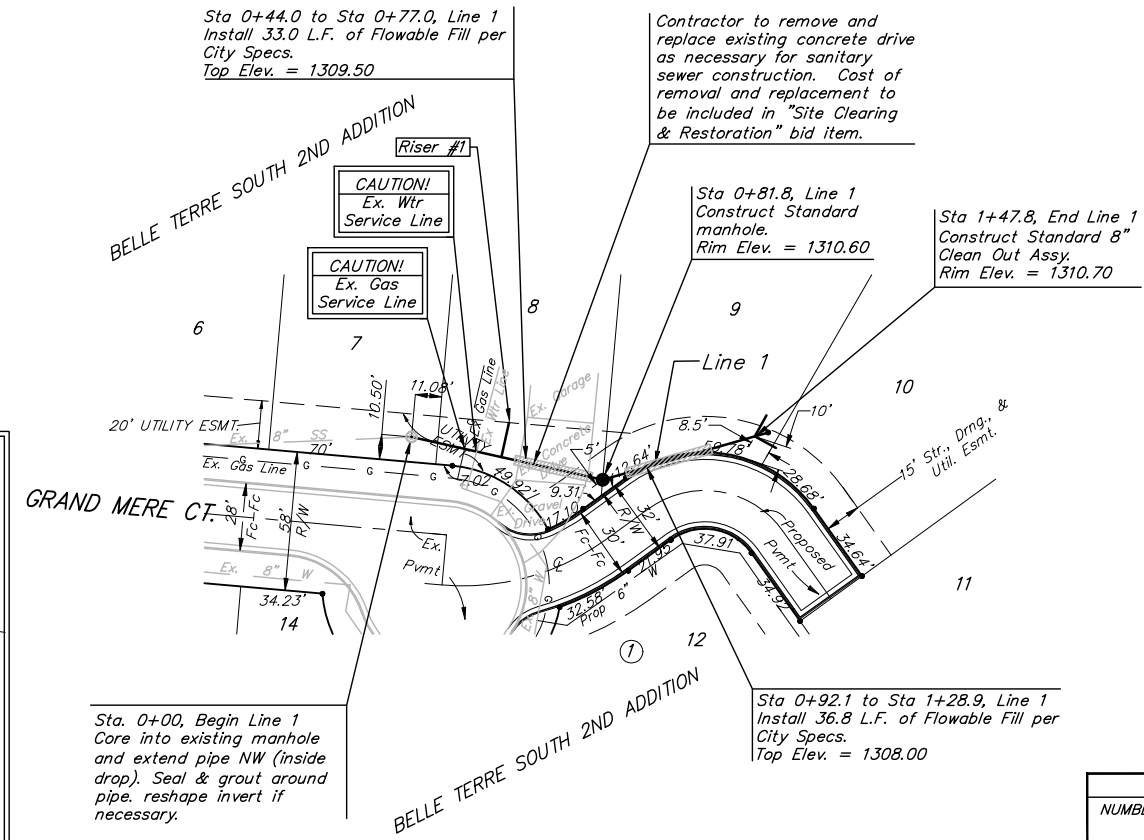
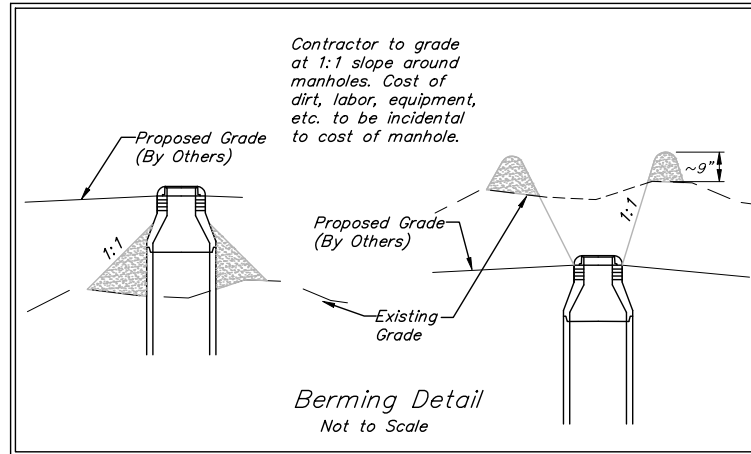


BENCHMARK:  
 BM #1 "□" Cut in top of curb at  
 PC adjacent to Res. "A", Belle Terre  
 South 2nd Addition.  
 Elev. = 1308.72 (M.S.L.)

BM #2 "□" Cut in top of curb at  
 NW corner of Lot 23, Block 3, Belle  
 Terre South Addition.  
 Elev. = 1307.17 (M.S.L.)

BM #3 "□" Cut in top of curb at  
 NE corner of Lot 2, Block 1, Belle  
 Terre South Addition.  
 Elev. = 1304.39 (M.S.L.)

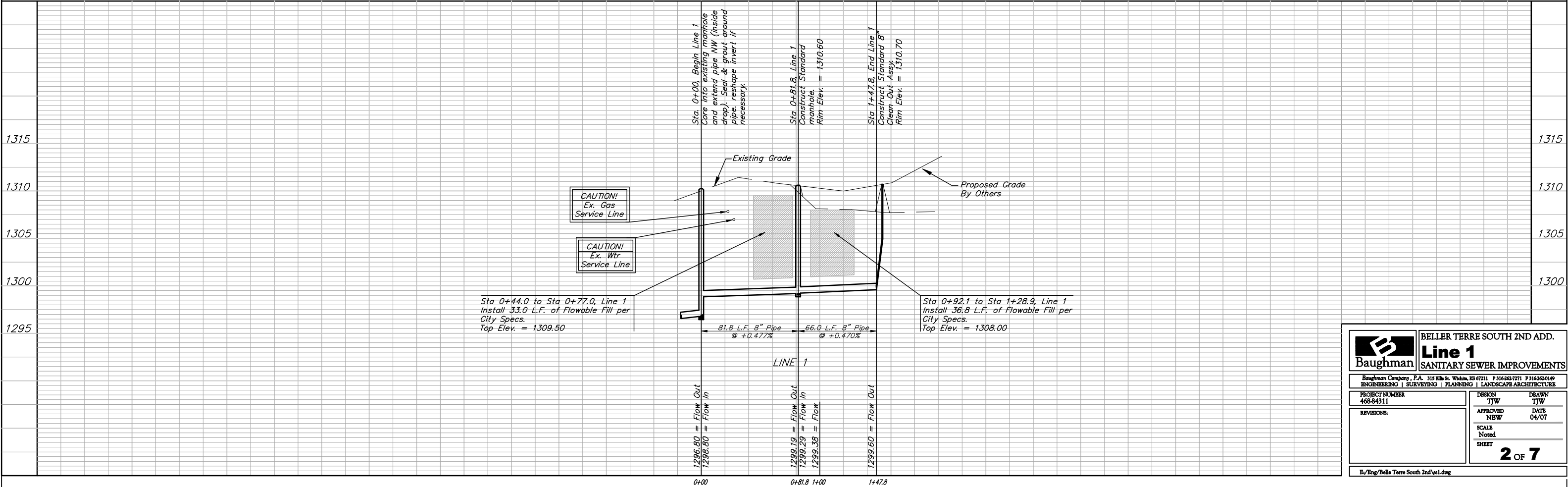


Scale: 1" = 40' Horizontal  
 1" = 5' Vertical  
 • = Iron

SEWER SERVICE TABLE

NUMBER	TYPE	LOCATION			FOR INFORMATION ONLY		
		LOT NO.	BLOCK NO.	LINE NO.	STATION\ DIRECTION	APPROXIMATE LENGTH 4" PIPE	
					VERTICAL	HORIZONTAL	
1	8" X 4" Tee Saddle	8	1	1	0+38.4/Lt.	8.5'	14.5'

NOTE: Vertical Riser Pipe shall be extended to 2' minimum above ground water elevation and 4' maximum below proposed ground elevation.



**Baughman** BELLE TERRE SOUTH 2ND ADD.  
**Line 1**  
 SANITARY SEWER IMPROVEMENTS

Baughman Company, P.A. 315 Hill St. William, PA 17153 P 316-982-7271 F 316-982-0149  
 ENGINEERING | SURVEYING | PLANNING | LANDSCAPE ARCHITECTURE

PROJECT NUMBER: 468-64311

DESIGN: TJW  
 DRAWN: TJW

APPROVED: NBW  
 DATE: 04/07

SCALE: Noted  
 SHEET: **2 OF 7**

E:\Eng\Belle Terre South 2nd\ss1.dwg