

GENERAL NOTES:

1. The Contractor shall comply with all applicable safety regulations. All construction shall be completed following current City Standard Specifications and Special Provisions.

2. Contractor will be required to provide notice to utility companies a minimum of seventy-two (72) hours prior to any excavation, as follows:

Kansas One-Call 687-2470

The Contractor must notify the following in case of an emergency:

AT&T 1-800-246-8464
 Black Hills Energy 1-800-694-8989
 City of Wichita Water & Sewer 1-316-219-8921
 City of Wichita Stormwater 1-316-268-4090
 City of Wichita Traffic 1-316-268-4034
 Cox Communications 1-888-249-3530
 Kansas Gas Service 1-888-482-4950
 Evergy 1-800-544-4857

3. Utility service lines, poles, etc. are to be adjusted as necessary by others prior to construction unless the plans specifically call for their adjustment by the Contractor or unless the plans specifically identify a utility to be adjusted by its owner during construction. Existing utilities and their location, as shown on the plans, represent the best information obtainable for design. The Contractor will be required to work around existing utilities within the right-of-way which do not conflict with proposed construction.

4. Rubble from the removal of miscellaneous structures and excess excavation which is to be wasted shall be disposed of on sites to be provided by the Contractor. These sites shall be approved by the Engineer as to suitability, appearance and site location. Locations, in the opinion of the Engineer, that will leave an unsightly appearance will not be approved. All disposal sites must be approved by the Kansas Department of Health and Environment. Material either stockpiled or disposed of in a flood plain will require a Kansas State Board of Agriculture permit. Any material dumped in waters of the United States or wetlands is subject to U.S. Corps of Engineers permitting regulations. Any material buried or stockpiled beyond approved construction limits will require additional archaeological investigations unless buried in a previously approved borrow location.

5. Trees and shrubs in public right-of-way which are in direct conflict with proposed new construction shall be removed by the Contractor with the City Engineer's approval. Trees and shrubs which are not in direct conflict with proposed new construction shall be saved and protected from damage.

6. The Contractor shall give all property owners and/or tenants of developed property abutting the construction of this project a minimum of ten (10) days notice prior to start of construction.

7. The Contractor shall be responsible for preserving property irons. The Contractor will be required to re-establish any property irons which are damaged or destroyed by his construction operations. Such irons shall be re-established by a licensed land surveyor in accordance with state laws.

8. All elevations shown are NAVD 88.

9. All existing pavement and curb and gutter within the construction limits shall be saw cut, full depth, to the lines shown on the plans, or to the nearest joint, and removed, unless otherwise noted. If removal limits are within three feet of a joint, remove to the joint.

10. All traffic control devices in the work zone (including markings and signs) and their installation and maintenance shall comply with the latest edition of the Manual on Uniform Traffic Control Devices (MUTCD). All traffic control devices in the traveled way or clear zone shall be crashworthy (NCHRP Report 350 or MASH compliant). http://safety.fhwa.dot.gov/roadway_dept/policy_guide/road_hardware/wzd

11. All construction equipment, including vehicles, materials, and debris, shall be stored outside of the clear zone. Where this cannot be achieved the contractor shall place appropriate signs, object identifiers, and/or barricades in compliance with the MUTCD.

12. Except when required for safety, traffic control shall not block any lanes or sidewalks when work is not being performed.

13. All existing and proposed erosion control measures including silt fencing, erosion control mat, straw bales, inlet barriers, and const. entrance shall be maintained throughout construction by the contractor and until project is accepted by the City of Wichita. The on-site engineer shall complete weekly reports on the status of erosion control measures. The contractor shall be required to comply with maintenance and/or replacement of erosion control measures as determined by the on-site engineer until project is accepted by City of Wichita. Maintenance and/or replacement of erosion control measures to be paid by L.S. bid item "Maintain Existing BMPs".

14. All of Maple St. R/W shall be seeded and mulched as follows:

Seed -- Kansas Premium Fescue Blend; 8 lbs. PLS/1000 Sq. Ft.
 Annual Rye grass; 3 lbs./1000 Sq. Ft.
 Fertilizer -- 12-24-12 Ratio; 45 Lbs./Ac.
 Mulch -- 2 Tons Prairie Hay/Ac.

All other disturbed areas are to be seeded as follows:

Seed -- Rye grass; 5 lbs./1000 Sq. Ft.

All costs associated with seeding including mobilization, preparation of ground, seeding, fertilizing, mulching, etc. shall be included in the L.S. bid item "Seeding".

An additional bid item for "Seeding, Temporary" has been included and may be used at the discretion of the design engineer. Temporary seed shall be Annual Rye at 5 lbs./1000 Sq. Ft. unless otherwise noted and shall be planted when permanent seed or sod cannot be used due to seasonal limitations. If the "Seeding, Temporary" bid item is not used, 100% of the pay item will be deducted from the contract. All costs associated with temporary seeding including mobilization, preparation of ground, seeding, etc., shall be included in the L.S. bid item "Seeding, Temporary".

15. The developer for this project is Jay W. Russell, P.O. Box 75337, Wichita, KS 67272 (316)722-2417 j@russellco.com

16. Borrow excavation is available on-site from existing stockpiles located on Lots 122-126, Block E (Approx. 13,000 C.Y.) and on Lots 25-26, Block E. The existing pile in Reserve "D" shall not be used for borrow material. It is expected there will be approx. 2500 CY of spoils from the sewer, water, and storm sewer construction.

17. Construction Sequence:
 The planned construction sequence for this phase of infrastructure development is as follows:
 1) Sanitary Sewer construction (single contract)
 2) *Storm Sewer construction and Mass Grading (part of paving project)
 3) Water Line construction (single contract)
 4) Pavement construction (includes storm sewer and mass grading)

*The Storm Sewer and Mass Grading construction are included in the street paving contract. Ideally the grading and storm sewer part of the paving project would be built, then the paving project would be suspended while the water line project is constructed. This phasing is beneficial for two reasons, 1) The storm sewer crosses under the water line at 3 locations and 2) there is a large amount of water line protective fill required that would be placed during the mass grading project.

The contractors awarded the work for the water line project and paving/storm sewer/mass grading project will be required to coordinate construction schedules to meet the phasing outlined above. Any additional costs caused by the suspension of the street project or additional work caused by the phasing listed above shall be included in each bid.

18. Sidewalk construction and project seeding shall be completed after the installation of Evergy trenching and conduit installation.

Benchmarks

BM #1: City of Wichita disc top of headwall of RCBC 660± east of the SE Cor. of the SE1/4, SEC. 22, TWP. 27-S, R-2-W. Elev. = 1410.27 NAVD88

BM #2: 60d step nail in utility pole 28' east of \angle 162nd St. W. and 26' north of \angle of Maple. Elev. = 1417.99 NAVD88

Mass Grading Earthwork
 Excavation = 8,228 C.Y.
 Fill = 24,630 C.Y.

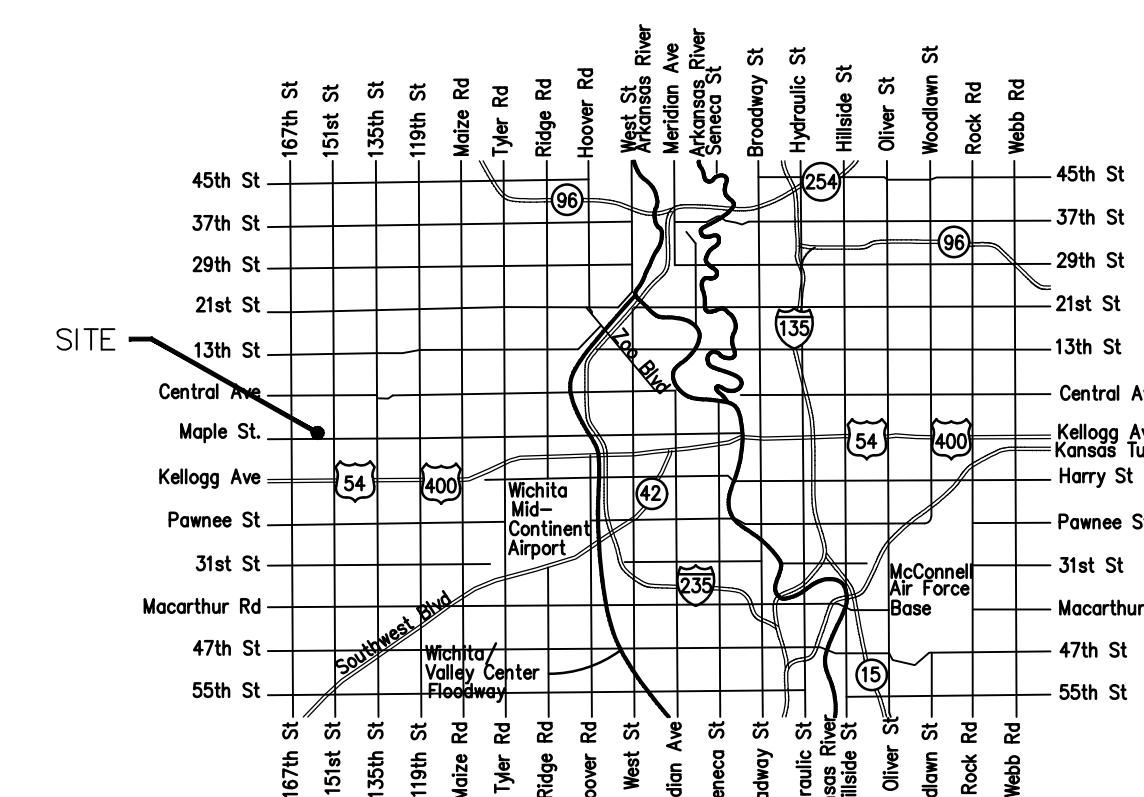
Total Project Length
 2,593 L.F. = 0.50 Miles

STREET PAVING FOR WELLCREST WITH INCIDENTAL SWS IMPROVEMENTS

to serve

PIKE ADDITION - PH. II

Sheriac and Wellcrest, from the west line of Lot 1, Block C, west and north to the north line of Lot 134, Block E
 Ciderbluff, from the south line of Lot 15, Block D, north to the north line of Lot 27, Block E
 Wellcrest Cir. (Lots 5 through 8, Block C, and Lots 113 through 117, Block D) from the south line of Sheriac, south to and including the cul-de-sac
 Wellcrest Ct. (Lots 134 through 140, 158 through 164, Block E) from the east line of Wellcrest to the east line of Lot 140, Block E
 Ciderbluff Ct. (Lots 16 through 27, Block E), from the west line of Ciderbluff, west to and including the cul-de-sac



Vicinity Map

CITY OF WICHITA, KANSAS

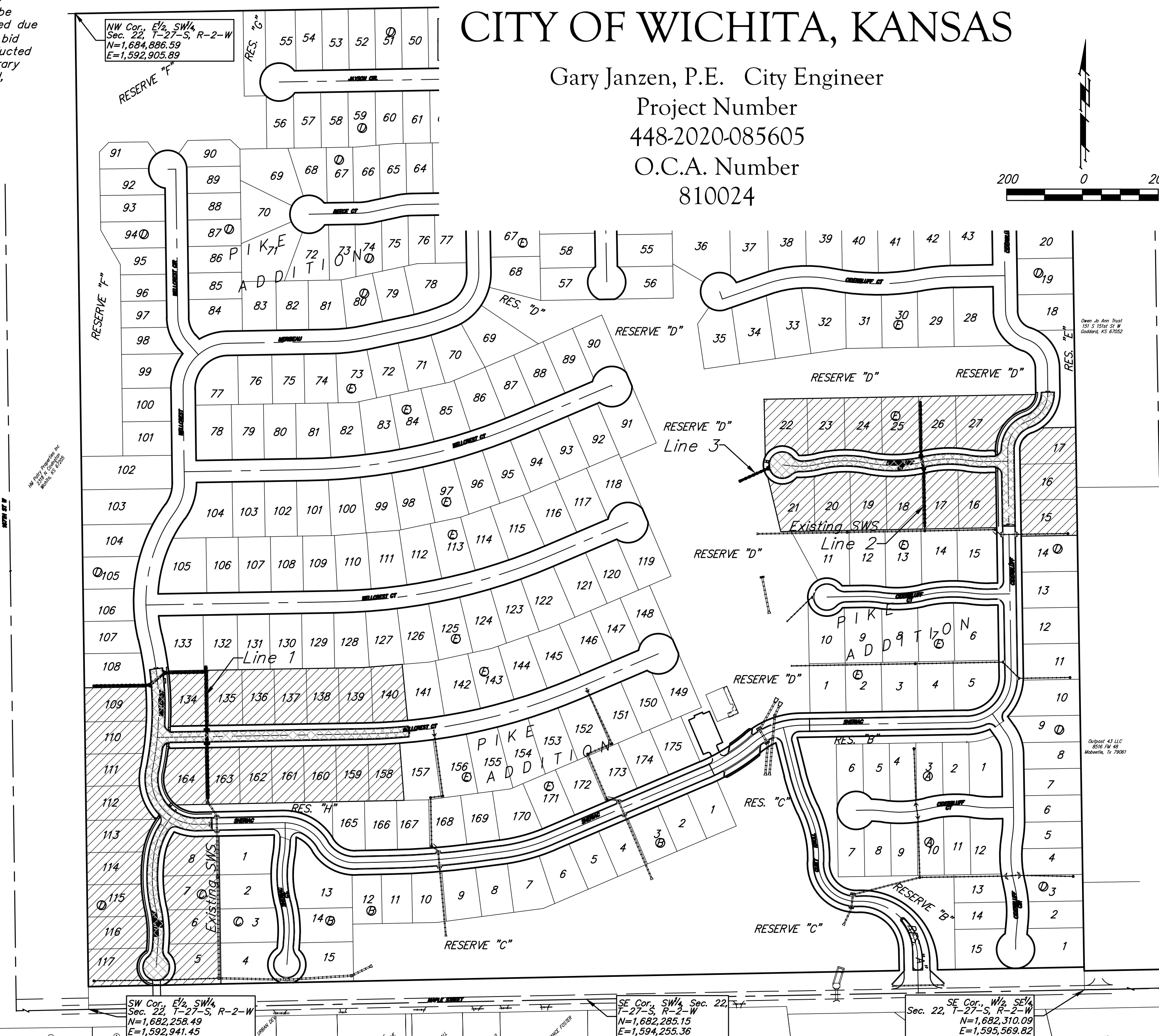
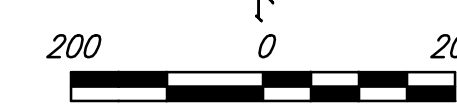
Gary Janzen, P.E. City Engineer

Project Number

448-2020-085605

O.C.A. Number

810024

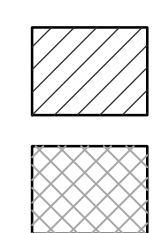


Sheet Index

Title Sheet	1
Sheriac/Wellcrest	2
Wellcrest Cir.	3
Wellcrest Ct.	4-5
Ciderbluff	6
Ciderbluff Ct.	7-8
SWS Line 1	9
SWS Line 2	10-11
SWS Line 3	12
Erosion Control & Mass Grading Plan	13
Mass Grading Detail	14
Asphalt Paving Detail	15
Curb & Gutter Detail	16
Sign Detail	17
Valley Gutter Detail	18
Wheelchair Ramp Detail	19
Type 1A Inlet L=5' and 10' Detail	20
Pavement Underdrain Detail	21
Backyard Inlet Detail	22
Miscellaneous Detail	23
Collapsible Bollard Details	24-27
Erosion Control BMP Details	28-32
Coordinate Sheet	33-34
Copy of Plat	35



Benefit District Proposed Streets



June 2020



Baughman Company, P.A. 315 Ellis St. Wichita, KS 67211 P 316-262-7271 F 316-262-0143
 ENGINEERING | SURVEYING | PLANNING | LANDSCAPE ARCHITECTURE