

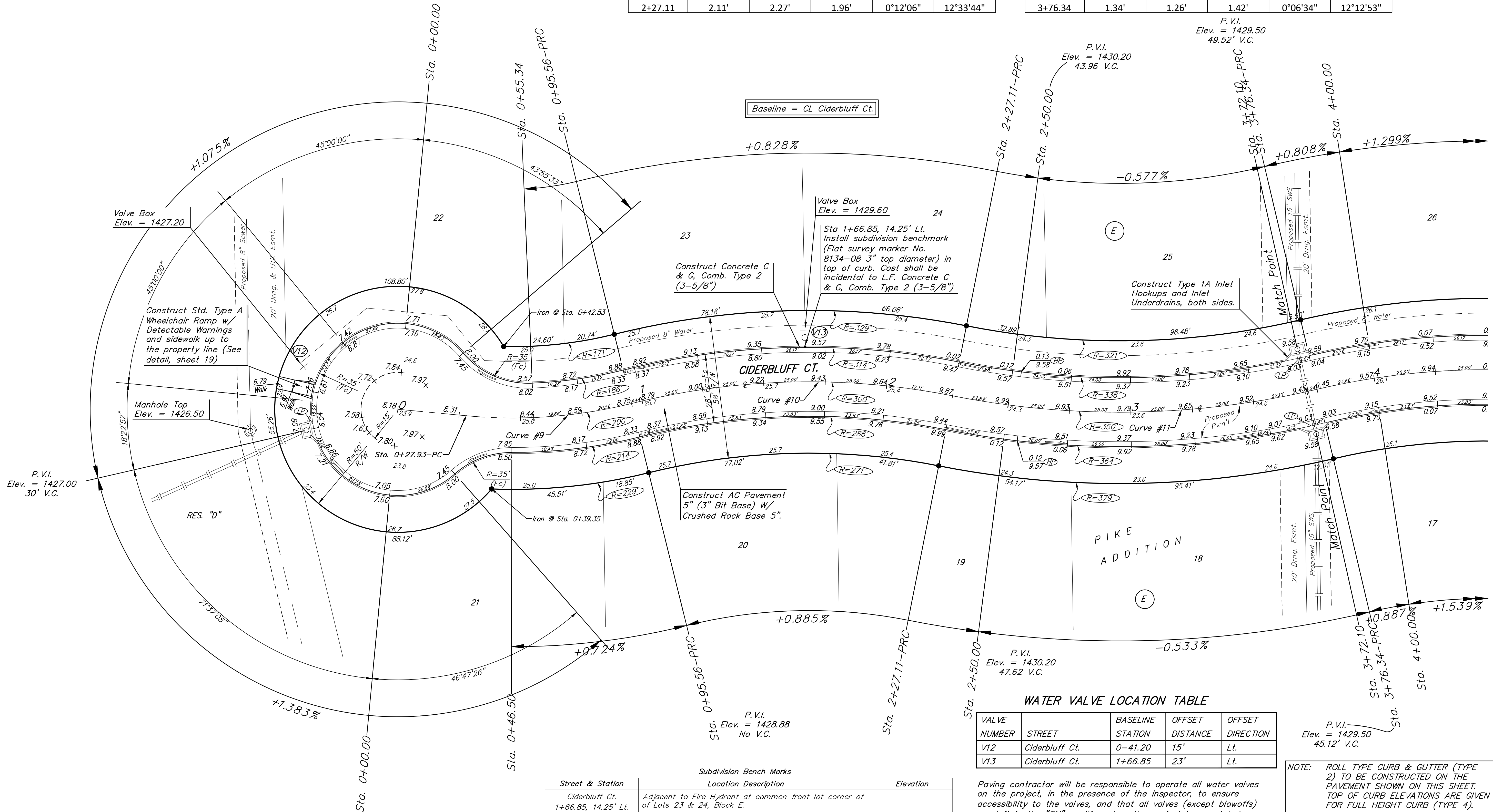
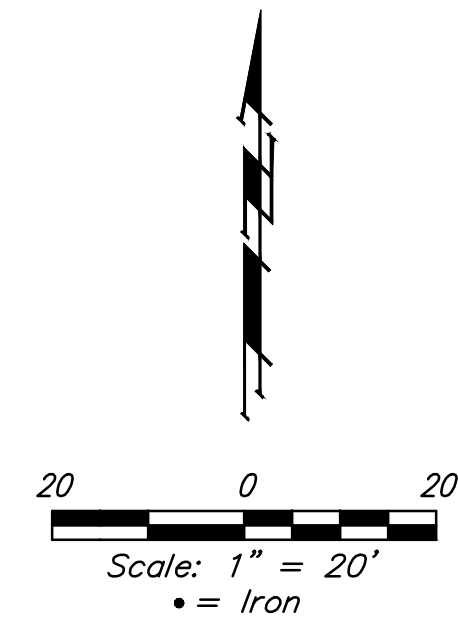
**BENCHMARKS:**  
 BM #1: City of Wichita disc top of headwall of RCBC 660'± east of the SE Cor. of the SE 1/4, SEC. 22, TWP. 27-S, R-2-W. Elev. = 1410.27 NAVD88

BM #2: 60d step nail in utility pole 28' east of @ 162nd St. W. and 26' north of @ of Maple. Elev. = 1417.99 NAVD88

Curve #9					
Curve Data Based on Centerline					
Rad. = 200' Delta = 19°22'31" Tangent = 34.14'					
Arc = 67.63' L.C. = 67.31' Def./Ft. = 8.59468 Min.					
Face Chord Lengths					
Station	Arc	8' Left	8' Right	Defl.	Total Defl.
0+27.93	-	-	-	0°00'00"	0°00'00"
0+46.50	18.57'	16.52'	20.61'	2°39'36"	2°39'36"
0+55.34	8.84'	7.87'	9.81'	1°15'59"	3°55'35"
0+75.00	19.66'	17.49'	21.81'	2°48'58"	6°44'33"
0+95.56	20.56'	18.29'	22.81'	2°56'42"	9°41'15"

Curve #10					
Curve Data Based on Centerline					
Rad. = 300' Delta = 25°07'27" Tangent = 66.85'					
Arc = 131.52' L.C. = 130.50' Def./Ft. = 5.73088 Min.					
Face Chord Lengths					
Station	Arc	8' Left	8' Right	Defl.	Total Defl.
0+95.59	-	-	-	0°00'00"	0°00'00"
1+00.00	4.41'	4.73'	4.09'	0°25'16"	0°25'16"
1+25.00	25.00'	26.83'	23.17'	2°23'17"	2°48'33"
1+50.00	25.00'	26.83'	23.17'	2°23'16"	5°11'49"
1+75.00	25.00'	26.83'	23.17'	2°23'16"	7°35'05"
2+00.00	25.00'	26.83'	23.17'	2°23'17"	9°58'22"
2+25.00	25.00'	26.83'	23.17'	2°23'16"	12°21'38"
2+27.11	2.11'	2.27'	1.96'	0°12'06"	12°33'44"

Curve #11					
Curve Data Based on Centerline					
Rad. = 350' Delta = 24°25'47" Tangent = 75.77'					
Arc = 149.23' L.C. = 148.10' Def./Ft. = 4.91116 Min.					
Face Chord Lengths					
Station	Arc	8' Left	8' Right	Defl.	Total Defl.
2+27.11	-	-	-	0°00'00"	0°00'00"
2+50.00	22.89'	21.45'	24.32'	1°52'25"	1°52'25"
2+75.00	25.00'	23.42'	26.57'	2°02'47"	3°55'12"
3+00.00	25.00'	23.42'	26.57'	2°02'46"	5°57'58"
3+25.00	25.00'	23.42'	26.57'	2°02'47"	8°00'45"
3+50.00	25.00'	23.42'	26.57'	2°02'47"	10°03'32"
3+75.00	25.00'	23.42'	26.57'	2°02'47"	12°06'19"
3+76.34	1.34'	1.26'	1.42'	0°06'34"	12°12'53"



Baseline = CL Ciderbluff Ct.

Valve Box  
Elev. = 1429.60  
24  
Sta 1+66.85, 14.25' Lt.  
Install subdivision benchmark  
(Flat survey marker No. 8134-08 3" top diameter) in top of curb. Cost shall be incidental to L.F. Concrete C & G, Comb. Type 2 (3-5/8")

Construct Concrete C & G, Comb. Type 2 (3-5/8")

Construct Type 1A Inlet Hookups and Inlet Underdrains, both sides.

Construct AC Pavement 5" (3" Bit Base) W/ Crushed Rock Base 5".

WATER VALVE LOCATION TABLE

VALVE NUMBER	STREET	BASELINE STATION	OFFSET DISTANCE	OFFSET DIRECTION
V12	Ciderbluff Ct.	0-41.20	15'	Lt.
V13	Ciderbluff Ct.	1+66.85	23'	Lt.

NOTE: ROLL TYPE CURB & GUTTER (TYPE 2) TO BE CONSTRUCTED ON THE PAVEMENT SHOWN ON THIS SHEET. TOP OF CURB ELEVATIONS ARE GIVEN FOR FULL HEIGHT CURB (TYPE 4).

Subdivision Bench Marks		
Street & Station	Location Description	Elevation
Ciderbluff Ct. 1+66.85, 14.25' Lt.	Adjacent to Fire Hydrant at common front lot corner of Lots 23 & 24, Block E.	

Paving contractor will be responsible to operate all water valves on the project, in the presence of the inspector, to ensure accessibility to the valves, and that all valves (except blowoffs) are left in the "ON" position when the project is completed.