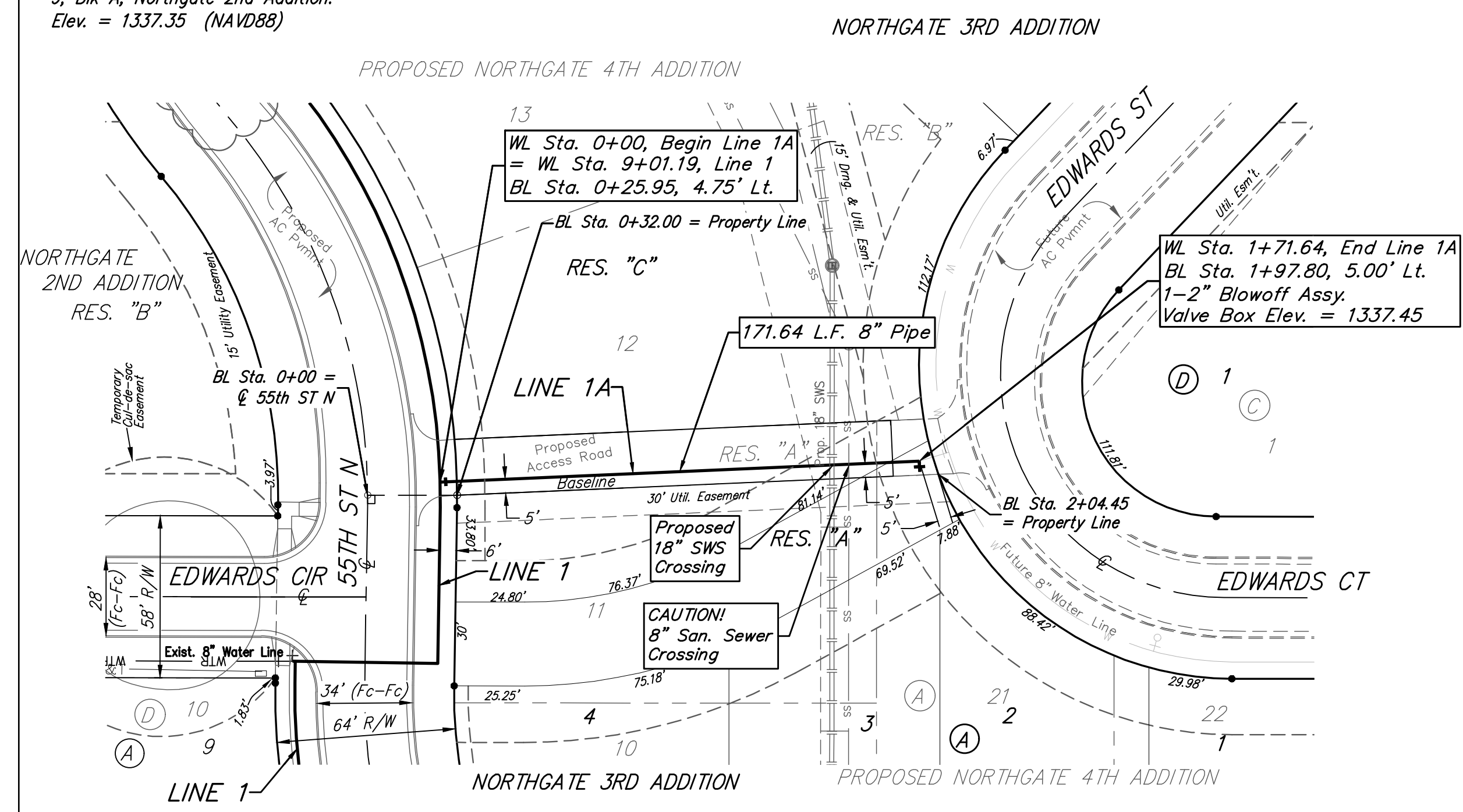


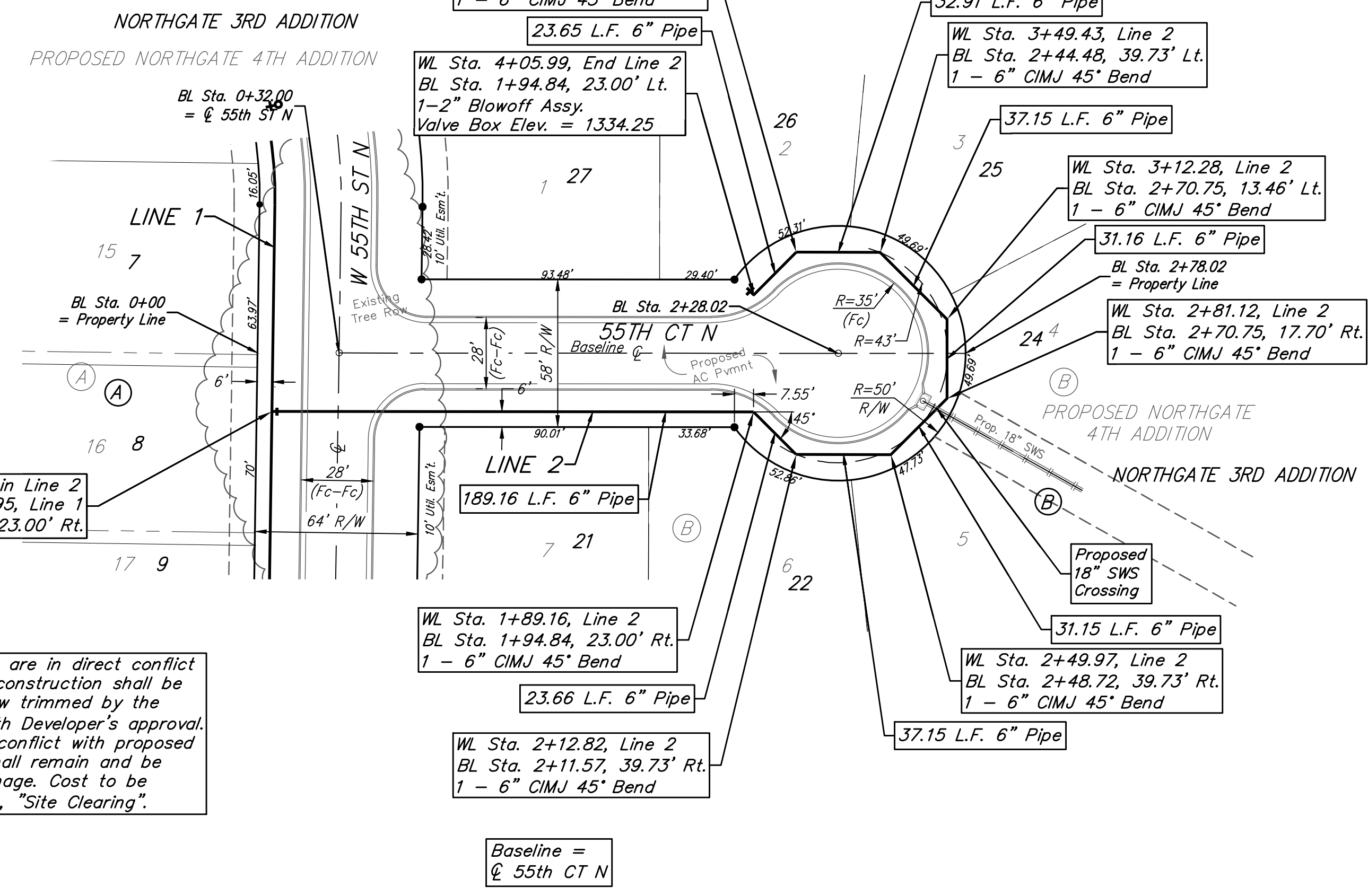
**BENCHMARKS:**  
 Chiseled square, center of storm water sewer vault, west side of Meridian, 145' S. & 30.6' E. of the NE Cor., Lot 1, Block A, Northgate 2nd Addition.  
 Elev. = 1334.49 (NAVD88)

Brass Disc in top of curb 14.8' west of southwest corner of Lot 9, Blk A, Northgate 2nd Addition.  
 Elev. = 1337.35 (NAVD88)

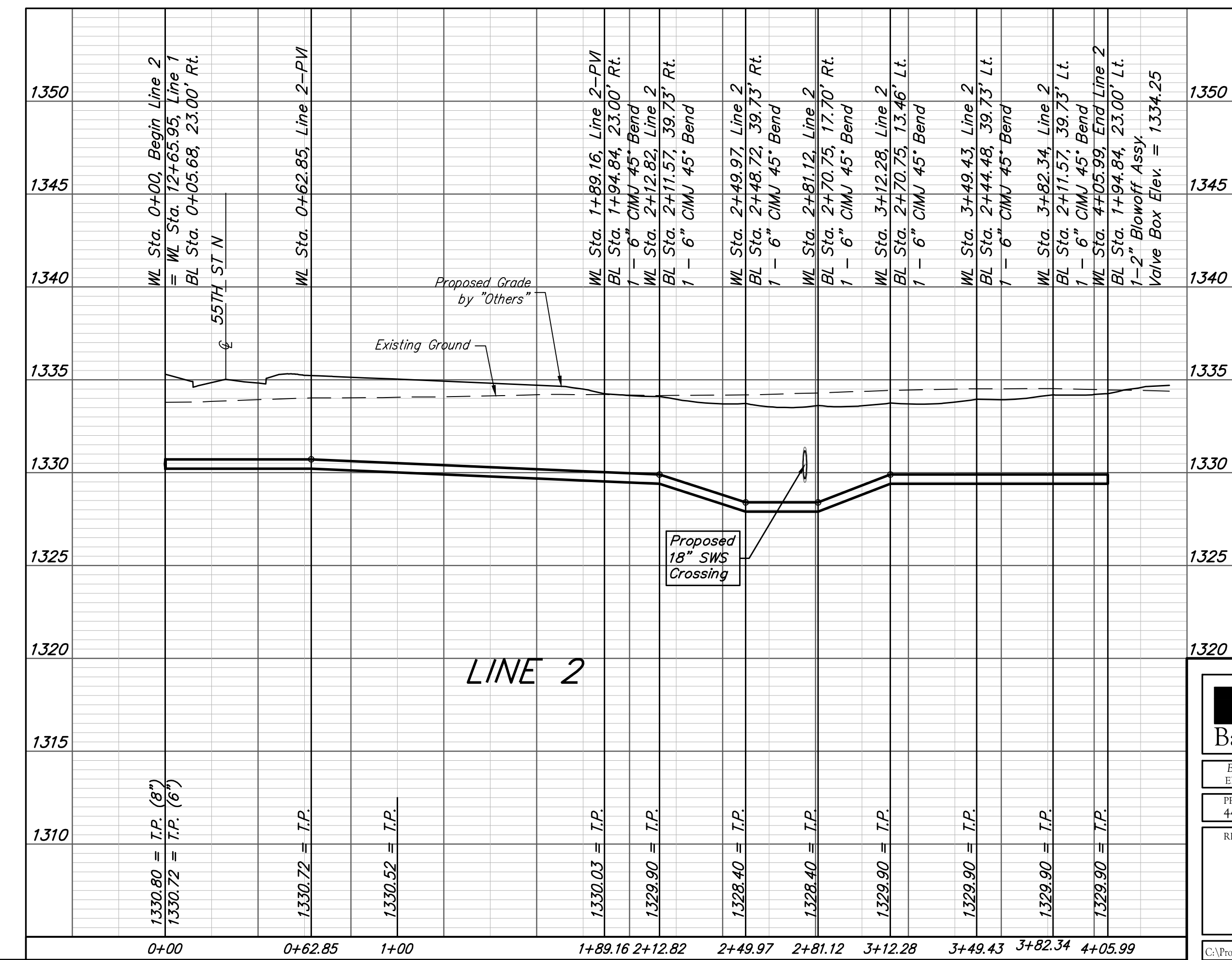
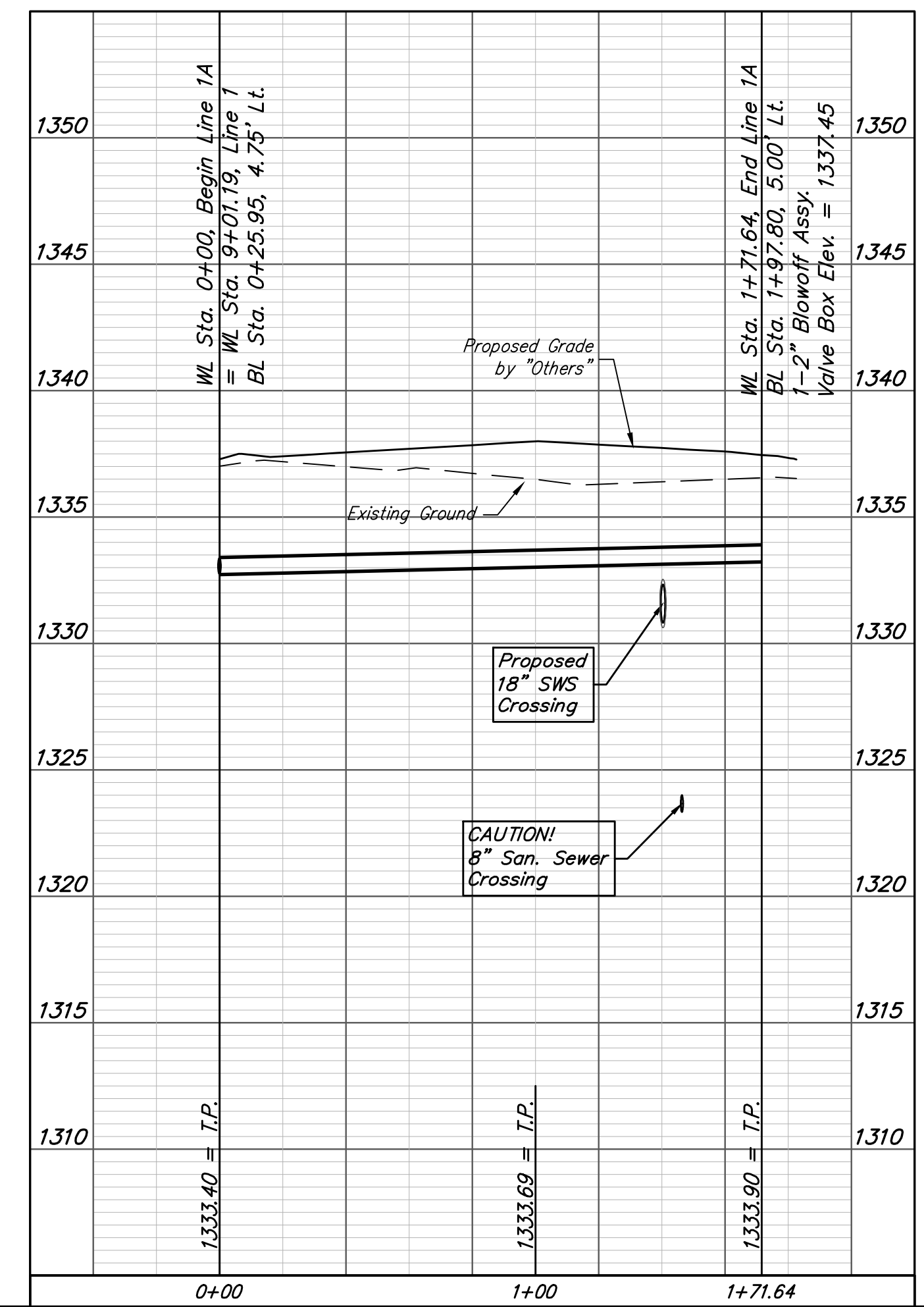
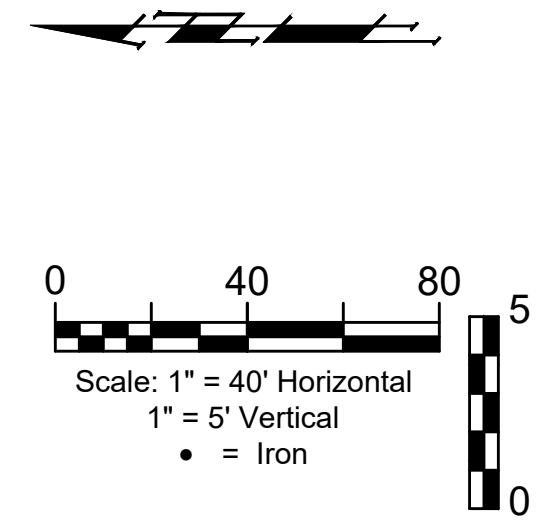


Baseline =  
 E.L. Res. "A", Proposed Northgate 4th Addn.

Existing trees which are in direct conflict with proposed new construction shall be removed or chainsaw trimmed by the Contractor ONLY with Developer's approval. Trees not in direct conflict with proposed new construction shall remain and be protected from damage. Cost to be included in bid item, "Site Clearing".



Baseline =  
 ☉ 55th CT N



**Baughman** Northgate 3rd Addition  
**LINE 1A & LINE 2**  
 Water Distribution System

Baughman Company, P.A. 315 Ellis St. Wichita, KS 67211 P 316-262-7271 F 316-262-0149  
 ENGINEERING | SURVEYING | PLANNING | LANDSCAPE ARCHITECTURE

PROJECT NUMBER: 448-2020-004499  
 REVISIONS:

DESIGN: AEG  
 DRAWN: JAK  
 APPROVED: [Signature]  
 DATE: June 15, 2020  
 SCALE: Noted  
 SHEET: 6 OF 14

C:\Projects\Northgate-4th Addition\_2020\F316\Engineering\WTR\_WTR Plans.dwg