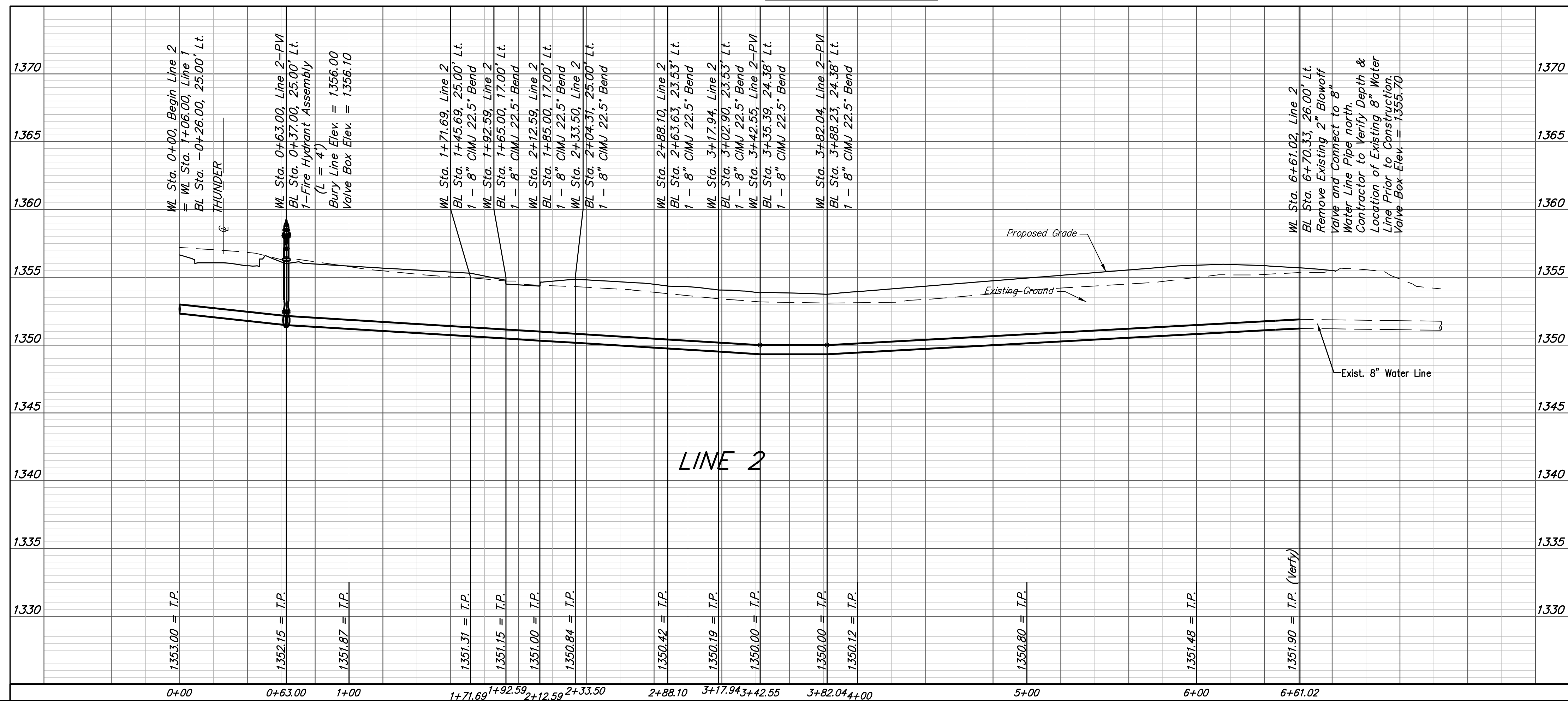
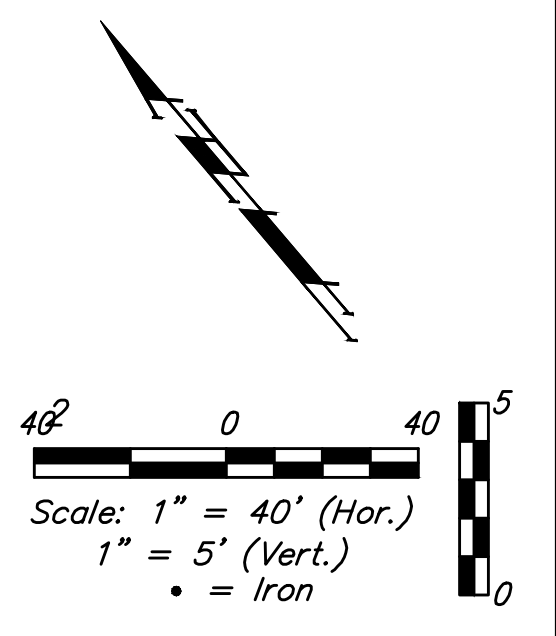
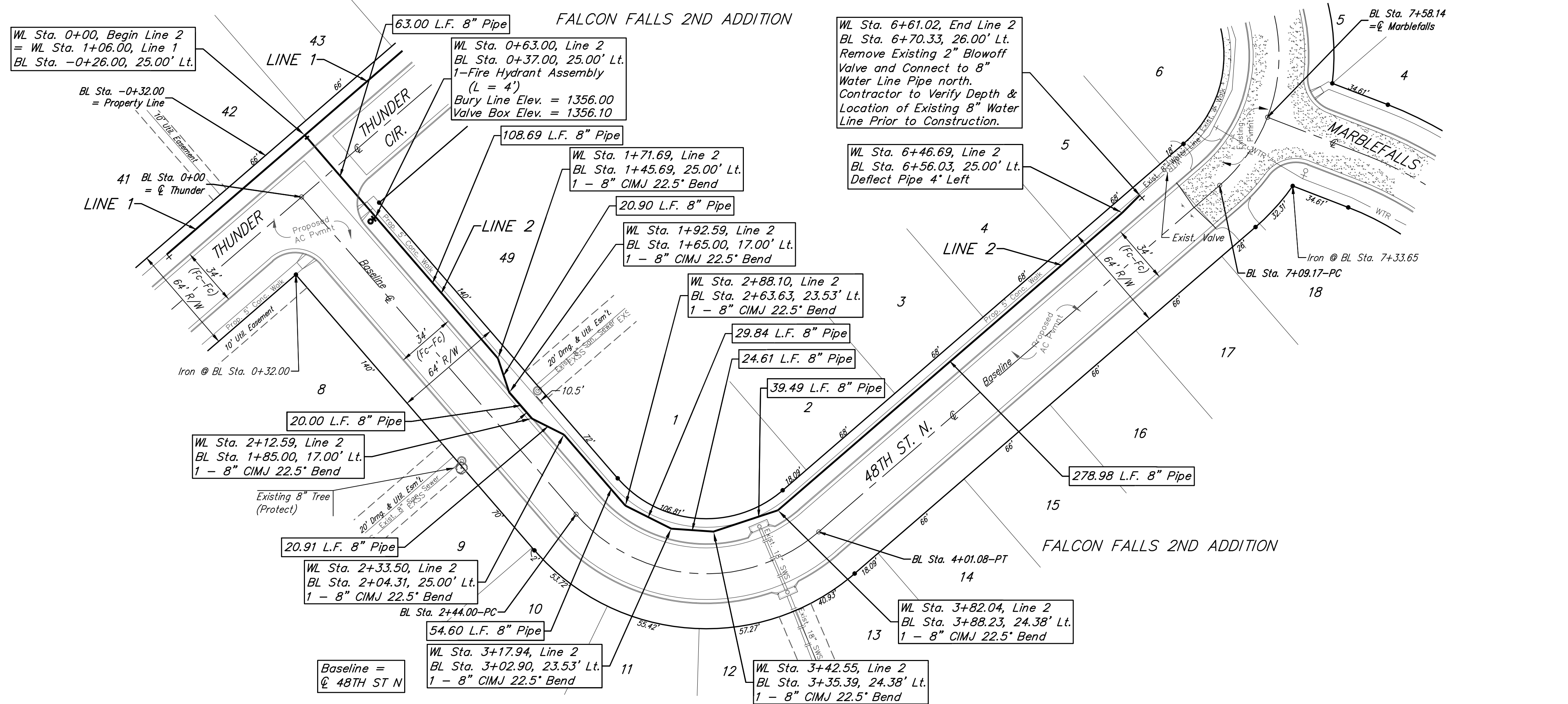


**BENCHMARKS:**  
 BM #1: City of Wichita BM Disk  
 South end of East return  
 Marblefalls & 48th ST N  
 SW of the NW corner of Lot 4,  
 Block A, Falcon Falls 2nd  
 Addition  
 Elev. = 1354.34 (NGVD29)  
 BM #2: "□" Top of Curb NE of  
 the NW corner of Lot 5, Block  
 B, Falcon Falls 2nd Addition  
 Elev. = 1359.13 (NGVD29)



		<b>Falcon Falls 2nd Addition - Phase 4B</b> <b>LINE 2</b> Water Distribution System	
		Baughman Company, P.A. 315 Ellis St. Wichita, KS 67211 P 316-262-7271 F 316-262-0149 ENGINEERING   SURVEYING   PLANNING   LANDSCAPE ARCHITECTURE	
PROJECT NUMBER 448-9090S	DESIGN DMV	DRAWN JAK	DATE June 26, 2020
REVISIONS:	APPROVED	SCALE Noted	SHEET <b>5 OF 14</b>