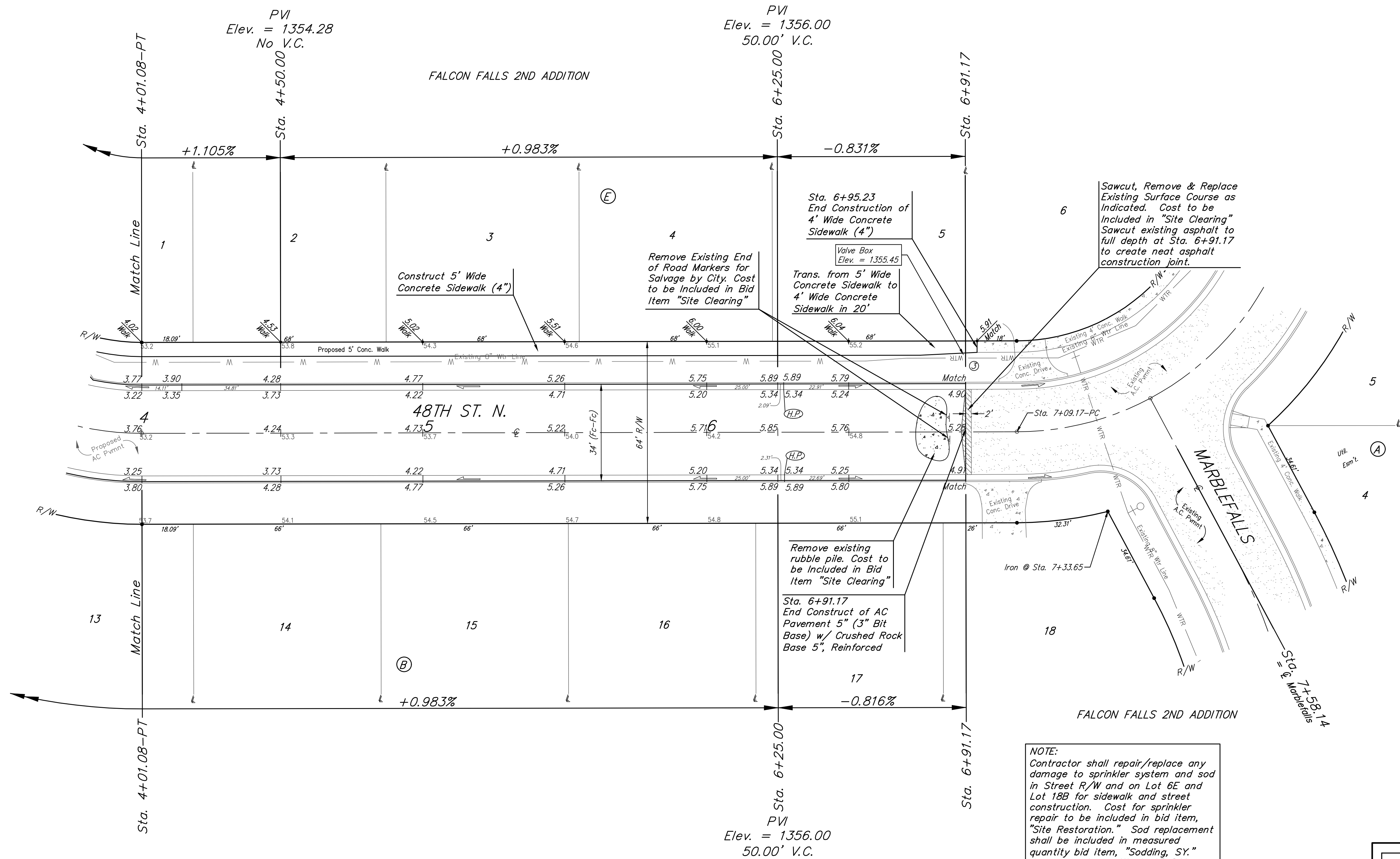
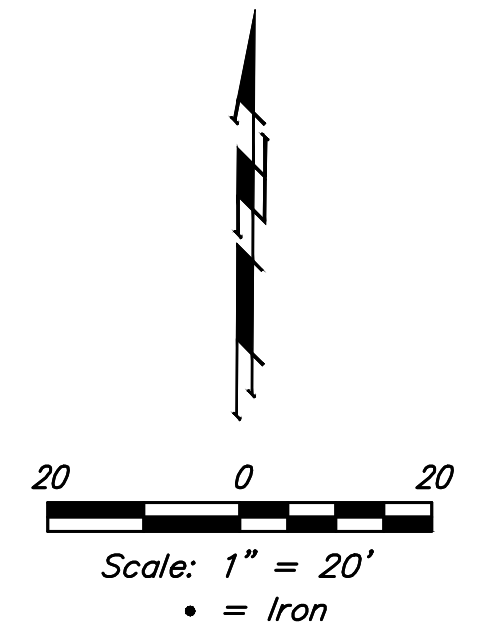


BENCHMARKS:
 BM #1: City of Wichita BM Disk
 South end of East return
 Marblefalls & 48th ST N
 SW of the NW corner of Lot 4,
 Block A, Falcon Falls 2nd
 Addition
 Elev. = 1354.34 (NGVD29)

BM #2: "□" Top of Curb NE of
 the NW corner of Lot 5, Block
 B, Falcon Falls 2nd Addition
 Elev. = 1359.13 (NGVD29)



VALVE LOCATION TABLE

VALVE NUMBER	STREET	BASELINE STATION	OFFSET DISTANCE	OFFSET DIRECTION
1	Thunder	1+43.00	26'	Lt.
2	Thunder	2+68.97	24'	Lt.
3	48th ST N	6+91.17	26'	Lt.

Roll type curb & gutter to be constructed on the pavement on this sheet.
 Top of curb elevation are given for full height curb.

	Falcon Fall 2nd Addition - Phase 4B		
	48TH ST N		
Sta. 4+01.08 to Sta. 6+91.17			
Baughman Company, P.A. 315 Ellis St. Wichita, KS 67211 P 316-262-7271 F 316-262-0149 ENGINEERING SURVEYING PLANNING LANDSCAPE ARCHITECTURE			
PROJECT NUMBER 472-85468	DESIGN AEG	DRAWN JAK	DATE June 29, 2020
REVISIONS:	SCALE Noted		
	9 OF 22		

C:\Projects\Falcon Falls 2nd\Phase 4B\STR_2004E575\STR_PLANS.dwg