

GENERAL NOTES:

- The Contractor shall comply with all applicable safety regulations. All construction shall be completed following current City Standard Specifications and Special Provisions.
- Contractor will be required to provide notice to utility companies a minimum of seventy-two (72) hours prior to any excavation, as follows:

Kansas One-Call 687-2470

The Contractor must notify the following in case of an emergency:

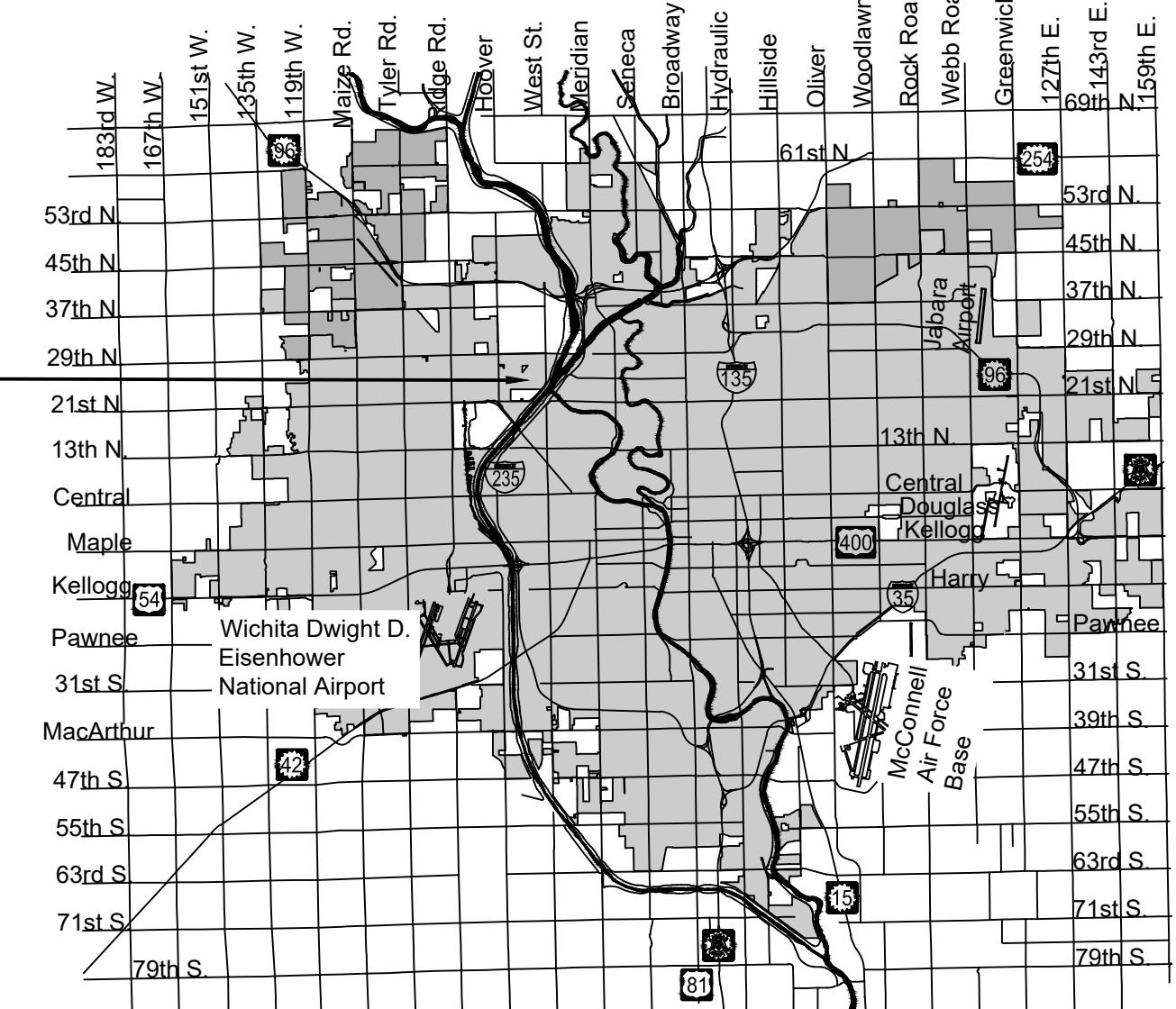
AT&T	1-800-246-8464
Black Hills Energy	1-800-694-8989
City of Wichita Water & Sewer Dept.	1-316-219-8921
City of Wichita Stormwater	1-316-268-4090
City of Wichita Traffic	1-316-268-4034
Cox Communications	1-888-249-3530
Kansas Gas Service	1-888-482-4950
Evergy	1-800-544-4857

- Utility service lines, poles, etc. are to be adjusted as necessary by others prior to construction unless the plans specifically call for their adjustment by the Contractor or unless the plans specifically identify a utility to be adjusted by its owner during construction. Existing utilities and their location, as shown on the plans, represent the best information obtainable for design. The Contractor will be required to work around existing utilities within the right-of-way which do not conflict with proposed construction.
- Rubble from the removal of miscellaneous structures and excess excavation which is to be wasted shall be disposed of on sites to be provided by the Contractor. These sites shall be approved by the Engineer as to suitability, appearance and site location. Locations, in the opinion of the Engineer, that will leave an unsightly appearance will not be approved. All disposal sites must be approved by the Kansas Department of Health and Environment. Material either stockpiled or disposed of in a flood plain will require a Kansas State Board of Agriculture permit. Any material dumped in waters of the United States or wetlands is subject to U.S. Corps. of Engineers permitting regulations. Any material buried or stockpiled beyond approved construction limits will require additional archaeological investigations unless buried in a previously approved borrow location.
- Trees and shrubs in public right-of-way which are in direct conflict with proposed new construction shall be removed by the Contractor with the Engineer's approval. Trees and shrubs which are not in direct conflict with proposed new construction shall be saved and protected from damage.
- The Contractor shall give all property owners and/or tenants of developed property abutting the construction of this project a minimum of ten (10) days notice prior to start of construction.
- The Contractor shall be responsible for preserving property irons. The Contractor will be required to re-establish any property irons which are damaged or destroyed by his construction operations. Such irons shall be re-established by a licensed land surveyor in accordance with state laws.
- If traffic will be impacted by construction, a traffic control plan must be submitted and approved by the City Traffic Engineer, traffic@wichita.gov before construction can begin. The Contractor shall be responsible for all traffic control measures to facilitate construction. All construction zone markings and signage shall conform to the latest version of the Manual on Uniform Traffic Control Devices (MUTCD) as published by the US Dept. of Transportation, Federal Highway Administration. All costs associated with construction markings and signage shall be the Contractors responsibly.
- All elevations shown are NAVD 88.
- The Contractor shall protect from damage and support existing utilities through constructions as approved by the utility owner and the Engineer at the contractors expense.
- Contractor shall limit the extent of trench openings overnight and weekends to less than 50 feet.
- No shrink or swell factors have been applied to the earthwork quantities shown on this project. All earthwork quantities are based on raw surface volume comparisons.
- In-situ materials may be used for Sand Backfill, Jet and Vibrate if they meet the City of Wichita's Requirements.

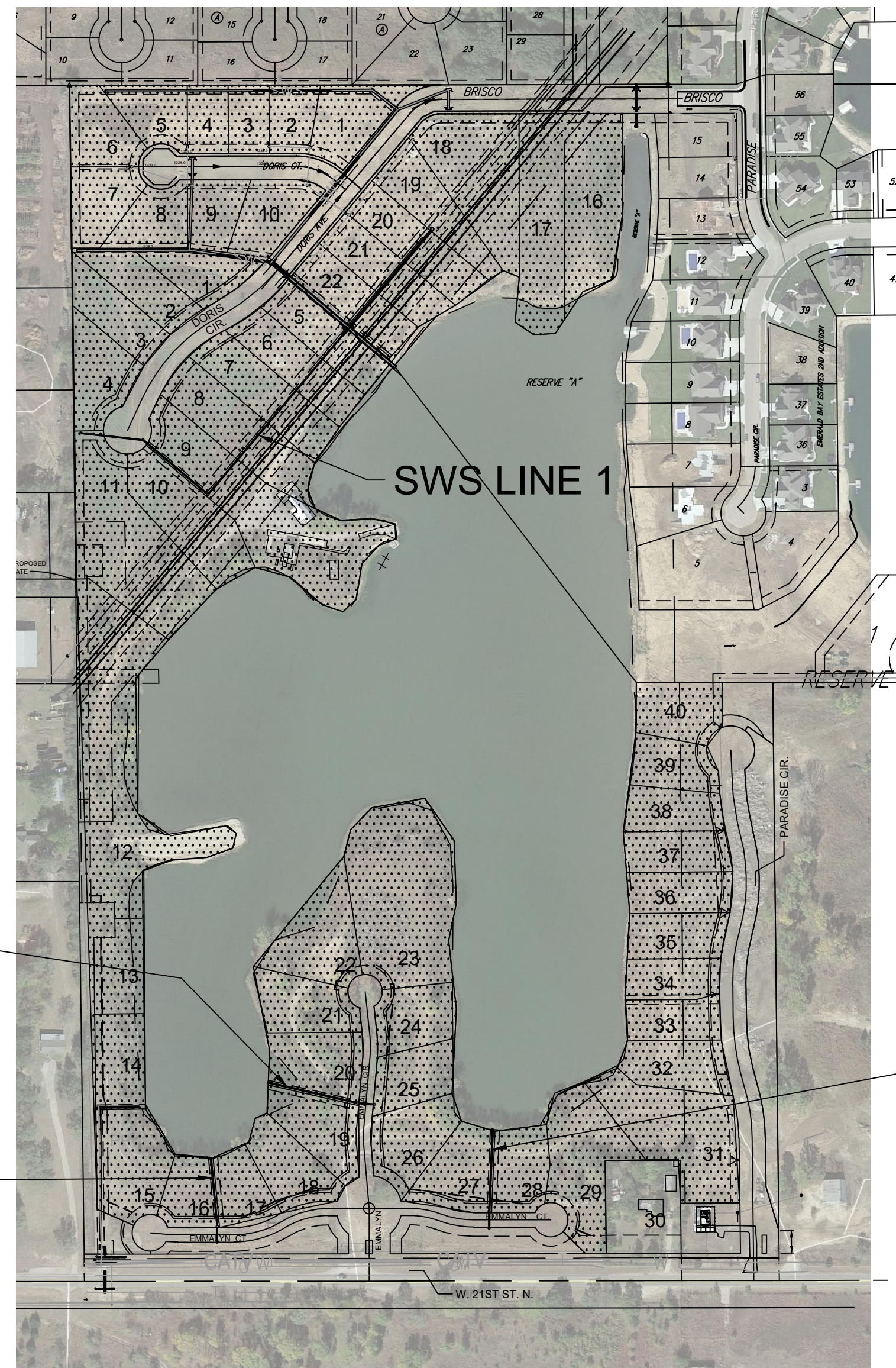
STORM WATER DRAIN 456 to serve Emerald Bay 4th - Ph 2 CITY OF WICHITA, KANSAS

Gary Janzen, P.E. City Engineer
Project Number 468-2019-085424
O.C.A. NO. 751601

PROJECT LOCATION



Vicinity Map



Sheet List

Sheet	Title
1	COVERSHEET
2	Pipeline information
3	Site Grading Details
4	Site Grading North
5	Site Grading South
6	RUBBLE & TREE REMOVAL
7	SWS LINE 1 - (1 of 2)
8	SWS LINE 1 - (2 of 2)
9	SWS LINE 2
10	SWS LINE 3
11	SWS LINE 4
12	Pre-Cast SWS MH
13	MH Frame & Cover
14	Type 1A CB Inlet 5-10
15	Type 1 CB Inlet 5-10
16	Snout Detail
17	Backyard Inlet
18	SWS BUBBLE MAP
19	ADDITION BUBBLE - SWS
20	Site Grading Points South
21	Site Grading Points North
22	Point Tables
23	EROSION CONTROL PLAN SOUTH
24	EROSION CONTROL PLAN NORTH
25	SW-501
26	SW-502
27	SW-503
28	SW-504
29	SW-505
30	PLAT

Stormwater Certification:

New Development or Redevelopment (Circle One)

Stormwater Permit # SW2020-0019

NOI Permit # KSR115278

These construction plans were prepared in accordance with the current Stormwater Management Regulations as set forth in the City of Wichita's Stormwater Management Ordinance 16.32 and the policies/guidelines presented in the Wichita/Sedgwick County Stormwater Manual.

Site Area (Acres) = 32.6
Disturbed Area (Acres) = 21.0
Water Quality Treatment: Wet Pond
Downstream Channel Protection: Pond does not outlet
Detention: Wet Pond
The BMP used for this development is SNOUT.

APPROVED AS NOTED
BY WICHITA PUBLIC WORKS ENGINEERING
AND STORMWATER DIVISION

Engineering _____

Stormwater _____

NOTE TO CONTRACTORS

Inspection and testing for this project is to be provided by a Licensed Consulting Engineering Firm under contract with the Owner/Developer. Said inspection to be in accordance with the City of Wichita standard construction engineering practices and certified by a Licensed Professional Engineer in the state of Kansas. No work shall be performed the Contractor without such inspection nor shall any work be commenced without written authorization by City Engineering. All Construction and Materials shall comply with the current City of Wichita Specifications and Standards and Special Provisions. (on file and available at Wichita.gov).

An approved copy of these plans signed by City staff are required on-site.

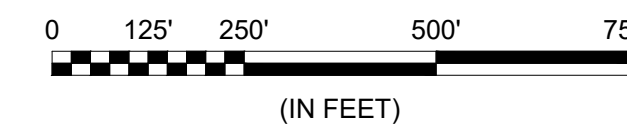
Benchmarks

BENCHMARK #1: CHISELED SQUARE ON SE CORNER OF CONCRETE PAD OF SANITARY SEWER LIFT STATION, 107' NORTH AND 73' EAST OF THE SOUTH ¼ CORNER OF SEC. 2, T27S, R1W, ELEVATION = 1326.88 (NAVD88, G12A)

BENCHMARK #2: CHISELED SQUARE ON SOUTH CURB OF SHORELINE STREET WEST SIDE OF INLET ACROSS FROM LOT 2, BLOCK 2 OF EMERALD BAY ESTATES 3RD ADDITION, ELEVATION = 1324.09 (NAVD88, G12A)

IMPROVEMENT DISTRICT

EARTHWORK QUANTITIES	
Description	Cu. Yds.
Cut	53,661
Fill	41,215
Net (Cut)	12,446



PLAN SET REVIEWED BY GARVER
Chunshu Bolan 2/12/2020
SIGNATURE DATE

NOTE: All coordinates listed are modified NAD83 Kansas State Plane Zone South unless otherwise noted. To convert listed coordinates to NAD83 Kansas State Plane Zone South coordinates multiply the northing and easting by the project scale factor of 0.99988251. Elevation datum is NAVD88 Geoid 12B unless otherwise noted.

MAY 2020

PLANS PREPARED BY

