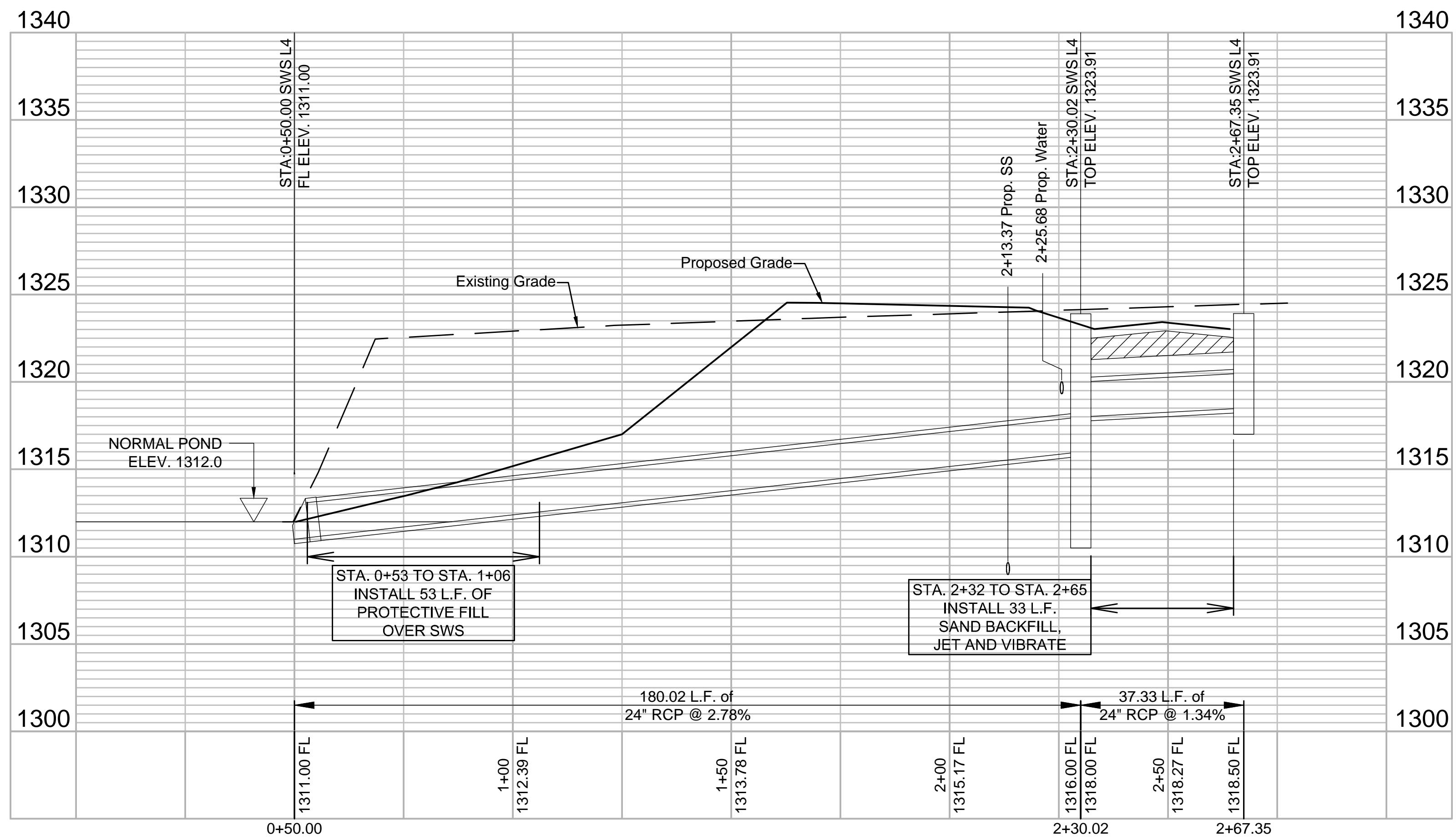
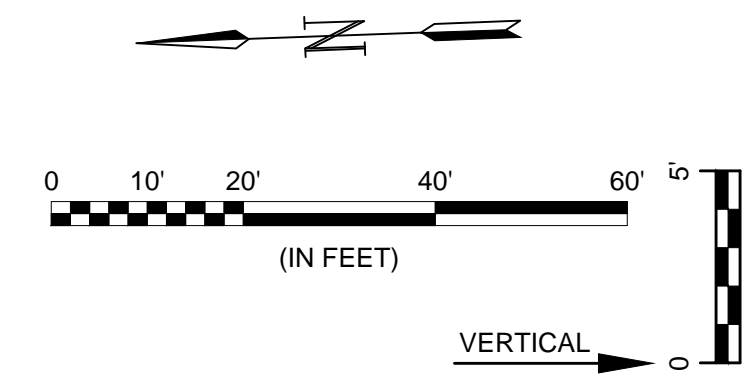
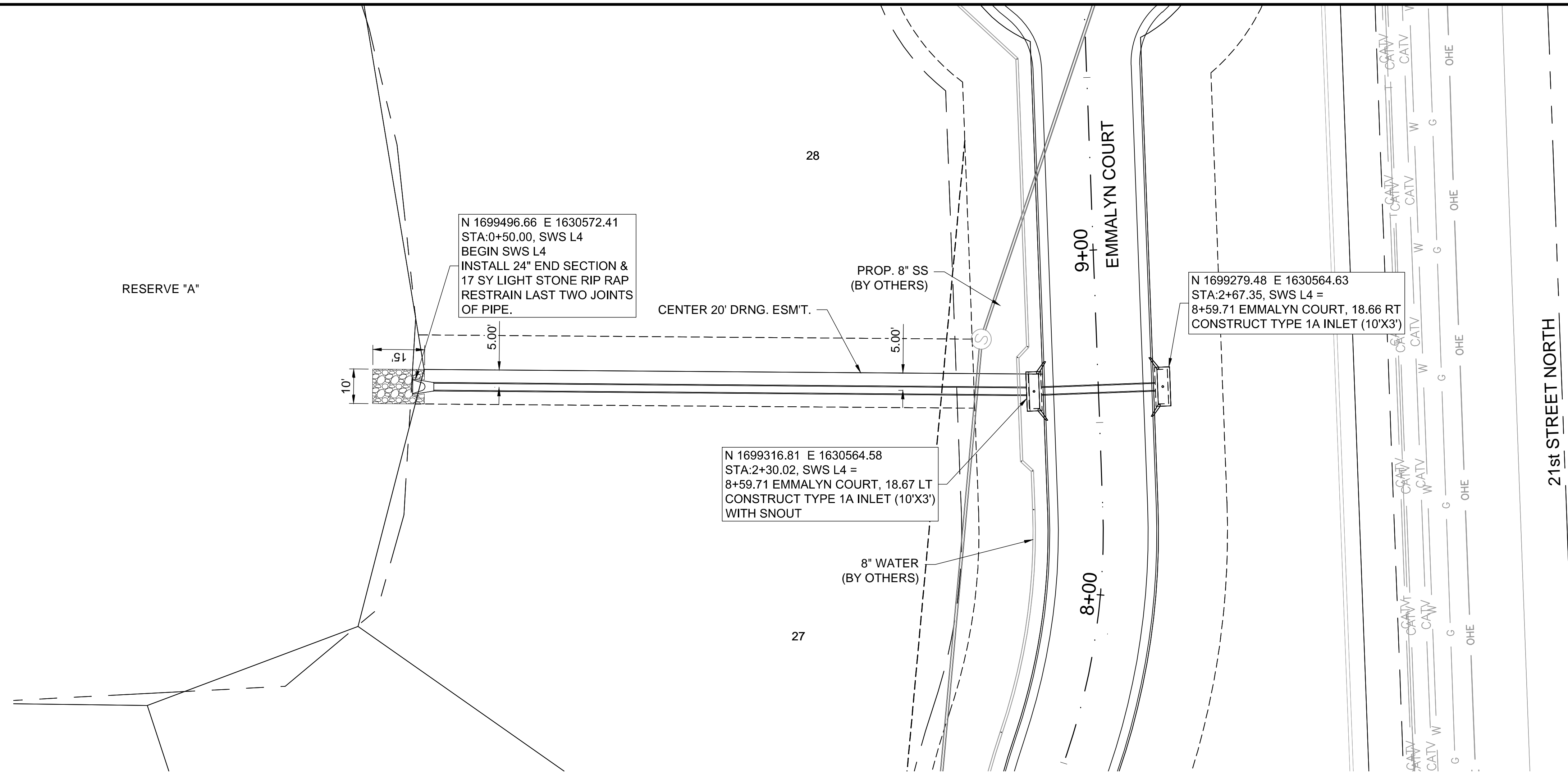


File: L:\2019\19T41016 - Emerald Bay 4th PH 2Drawings\C3D\Storm Sewer\SWS LINE 4.dwg Last Save: 4/30/2020 2:06 PM Last saved by: E.J.Glover
 Last plotted by: Standrich, Daryl R. Plot Style: --- Plot Scale: 1:2.585 Plot Date: 5/5/2020 11:03 AM Plotter used: None



© 2020 GARVER, LLC
 THIS DOCUMENT, ALONG WITH THE IDEAS AND DESIGNS CONVEYED HEREIN, SHALL BE CONSIDERED INSTRUMENTS OF PROFESSIONAL SERVICE AND ARE PROPERTY OF GARVER, LLC. ANY USE, REPRODUCTION, OR DISTRIBUTION OF THIS DOCUMENT, ALONG WITH THE IDEAS AND DESIGN CONTAINED HEREIN, IS PROHIBITED UNLESS AUTHORIZED IN WRITING BY GARVER, LLC OR EXPLICITLY ALLOWED IN THE GOVERNING PROFESSIONAL SERVICES AGREEMENT FOR THIS WORK.

8535 E. 21st St. N.
 Suite 130
 Wichita, KS 67206
 (316) 264-8008

REV.	DATE	DESCRIPTION	BY



CITY OF WICHITA
 WICHITA, KANSAS
 EMERALD BAY 4th ADD.
 PHASE 2 - SWS

SWS LINE 4

JOB NO.: 19T41016
 DATE: MAY 2020
 DESIGNED BY: E.JG
 DRAWN BY: DRS

BAR IS ONE INCH ON ORIGINAL DRAWING
 IF NOT ONE INCH ON THIS SHEET, ADJUST SCALES ACCORDINGLY.

DRAWING NUMBER

SHEET NUMBER **11** OF **30**