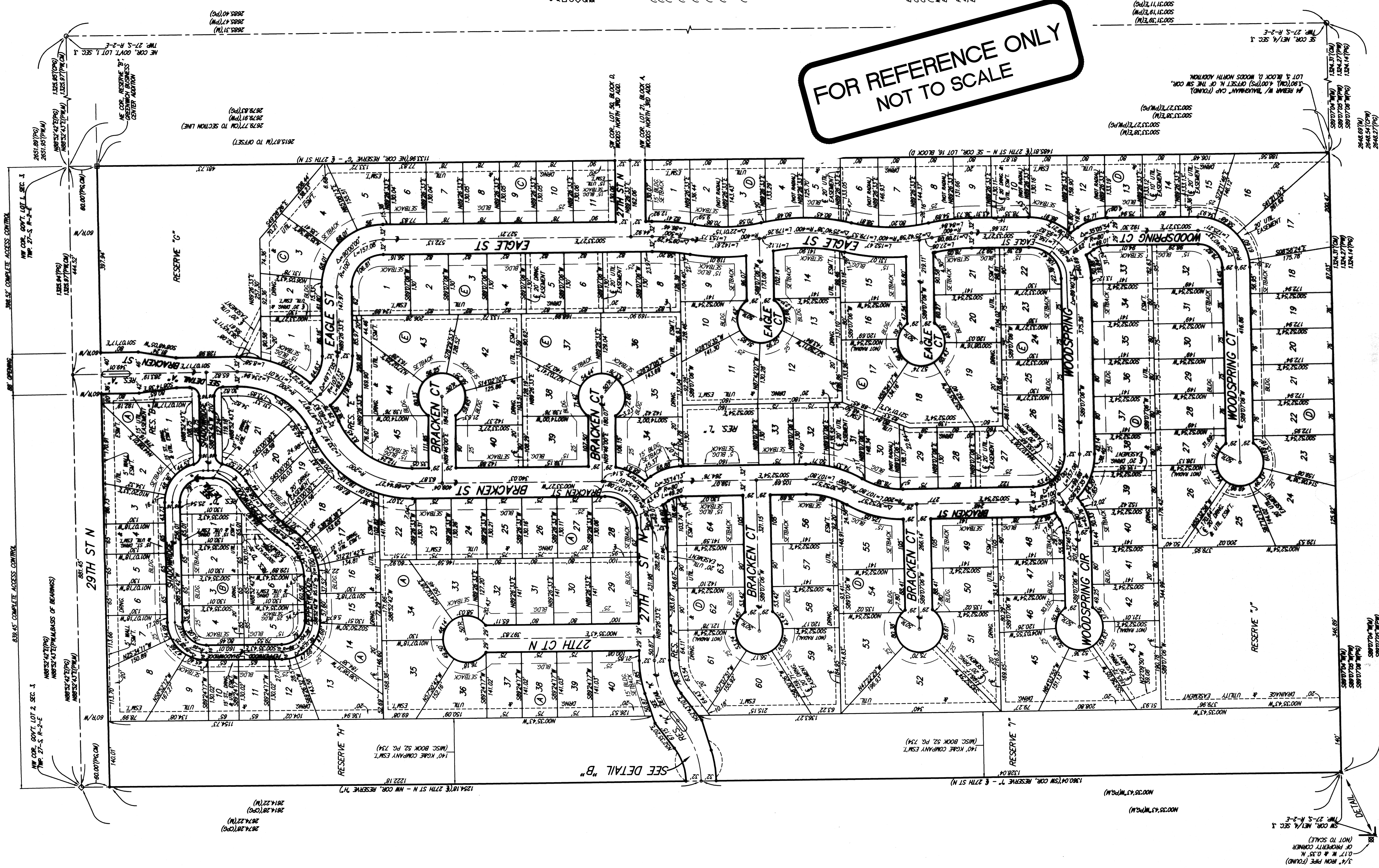


# FIREFLY WAY AN ADDITION TO WICHITA, SEDGWICK COUNTY, KANSAS



- = 1/4 REBAR W/ BAUGHMAN CAP (SET)
  - = 1/4 REBAR W/ BAUGHMAN CAP (FOUND)
  - = 1/2" IRON PIPE (FOUND)(COMMON UNKNOWN)
  - = 1/2" IRON PIPE (FOUND)(COMMON UNKNOWN)
  - = 1/2" IRON PIPE (FOUND)(COMMON UNKNOWN)
  - = METAL CAP IN CONC. (FOUND)
  - = 3/4" IRON PIPE (FOUND)(COMMON UNKNOWN)
- (M) = MEASURED
  - (PS) = PREVIOUS SURVEY
  - (CM) = CALLED AND MEASURED
  - (PF) = PLATTED INFO. PER THE FURNISH. PER
  - (PM) = WOODS NORTH ADDITION
  - (CPM) = CALCULATED INFO. PER PLATTED INFO. PER
  - (PS) = GREENWICH BUSINESS CENTER ADDITION
  - (CPG) = GREENWICH BUSINESS CENTER ADDITION

LOT	BLOCK	ELEVATION	MINOR
1-4	C	1305.5	
24-26	D	1307.8	
41-43	D	1307.8	

BENCHMARK:  
CITY OF WICHITA BENCHMARK DISC. 1307.7 E. & 146.6 N.  
OF THE COR. LOT 1, BLOCK D, FIREFLY WAY, LOT 1,  
WOODS NORTH ADDITION, NE COR. LOT 21, BLOCK A,  
WOODS NORTH ADDITION.  
ELEV. = 1307.69 WINDERS

RAILROAD SPINE IN E. FACE OF E. 7<sup>th</sup> POLE 39.9' W. &  
S&W S. OF NE COR. RESERVE 7, FIREFLY WAY.  
ELEV. = 1309.54 WINDERS

FOR REFERENCE ONLY  
NOT TO SCALE

NOTE:  
A drainage plan has been developed for the plat and  
is shown on sheet 14 of this plat. The drainage  
of property corners or as modified with the  
approval of the applicable City or County Engineer and  
indicated to allow for the compliance of stormwater.