

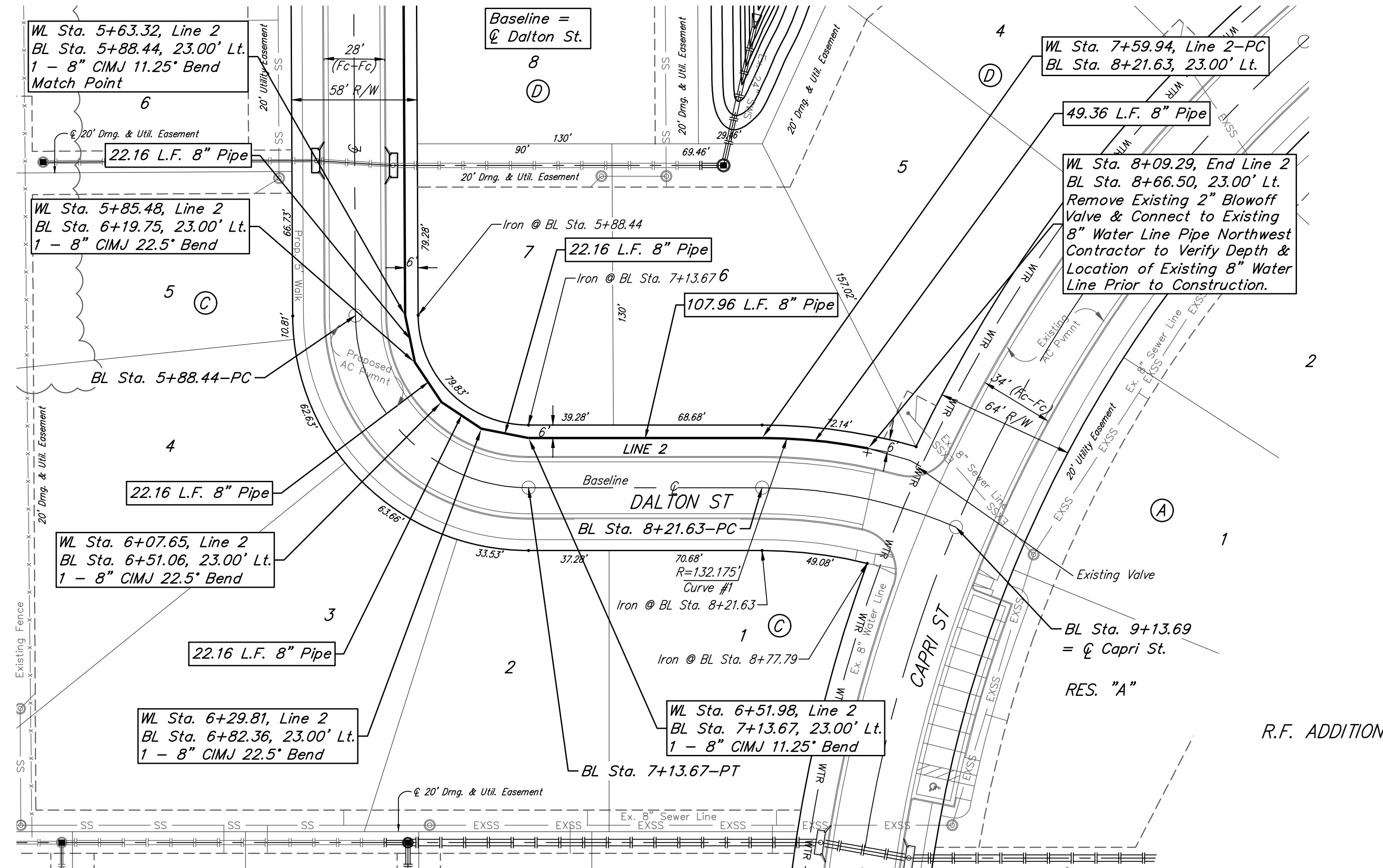
BENCHMARKS:

#1: "□" CUT CHISELED ON CURB,
15.2' S. OF SW COR., LOT 6,
BLOCK A, ROCKY FORD 2ND
ADDITION.
ELEV. = 1385.10 NAVD88

#2: "□" CUT CHISELED ON CURB,
8.6' N. & 11.7' W. OF SW COR.,
LOT 14, BLOCK C, ROCKY FORD
2ND ADDITION.
ELEV. = 1380.11 NAVD88

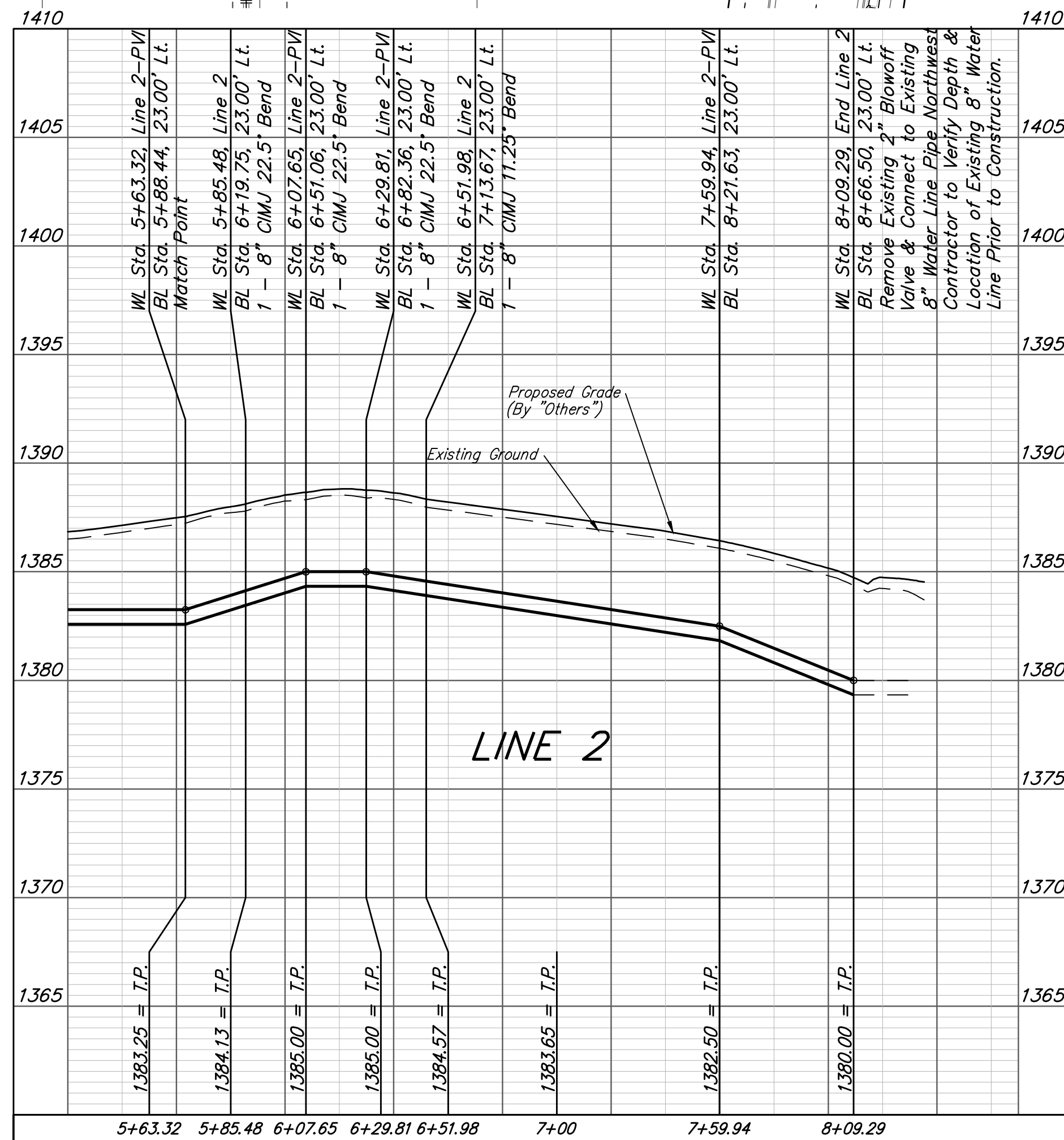
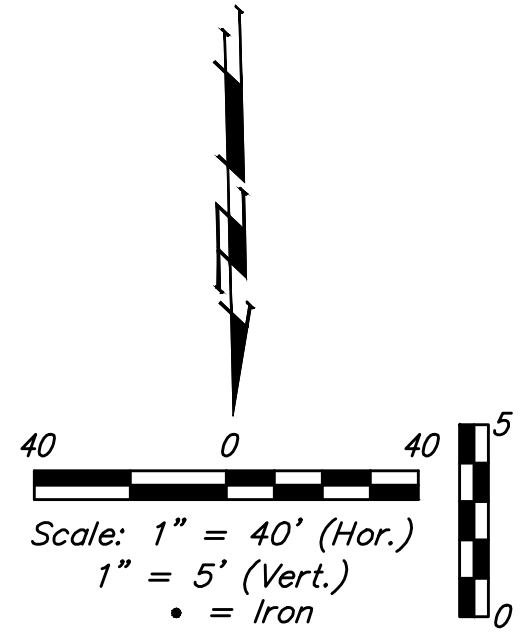
R.F. ADDITION

Curve #1				
Curve Data Based on Waterline				
Rad. = 132.175' Delta = 11°10'11" Tangent = 12.92'				
Arc = 49.35' L.C. = 25.73' Def./Ft. = 6.79010 Min.				
Station	Arc	Chord Lengths	Defl.	Total Defl.
		8' Right		
7+59.94	-	-	0°00'00"	0°00'00"
7+75.00	15.06'	6.55'	1°42'16"	1°42'16"
8+00.00	25.00'	10.88'	2°49'45"	4°32'01"
8+09.29	9.29'	4.04'	1°03'05"	5°35'06"



NOTE: Maintain 10 ft. of horizontal separation (outside dimension to outside dimension) between the water lines and sanitary sewer lines and manholes.

For Radii Under 200' Contractor to Use Short Pipe Lengths



	R.F. Addition - Phase II	
	LINE 2	
Water Distribution System		
<small>Baughman Company, P.A. 315 Ellis St. Wichita, KS 67211 P 316-262-7271 F 316-262-0149 ENGINEERING SURVEYING PLANNING LANDSCAPE ARCHITECTURE</small>		
PROJECT NUMBER 448-2019-005514	DESIGN AEG	DRAWN HW
REVISIONS:	APPROVED 	DATE 08/03/20
SCALE Noted		SHEET 6 OF 16